



Llywodraeth Cymru  
Welsh Government

YSTADEGAU, DOGFENNU

# Cymorth ar gyfer gwelliannau tai: Ebrill 2022 i Fawrth 2023

Gwybodaeth am wariant, Grantiau Cyfleusterau i'r Anabl ac ardaloedd adnewyddu ar gyfer Ebrill 2022 i Fawrth 2023. Saesneg yn unig.

Cyhoeddwyd gyntaf: 25 Ebrill 2024

Diweddarwyd ddiwethaf: 25 Ebrill 2024

Cafodd y ddogfen hon ei lawrlwytho o LLYW.CYMRU, efallai nad dyma'r fersiwn mwyaf diweddar.

Ewch i <https://www.llyw.cymru/cymorth-ar-gyfer-gwelliannau-tai-ebriill-2022-i-fawrth-2023-html> i weld y fersiwn ddiweddaraf.

Gwybodaeth am [hawlfraint](#).

# Cynnwys

**Introduction**

**Main points**

**Overall expenditure (including DFGs)**

**DFGs**

**Housing improvement (excluding DFGs)**

**Renewal areas**

**Future collections**

**Quality and methodology information**

**Manylion cyswllt**

**Cafodd y ddogfen hon ei lawrlwytho o LLYW.CYMRU, efallai nad dyma'r fersiwn mwyaf diweddar.**

Ewch i <https://www.llyw.cymru/cymorth-ar-gyfer-gwelliannau-tai-ebrill-2022-i-fawrth-2023-html> i weld y fersiwn ddiweddaraf.

Gwybodaeth am [hawlfraint](#).

# Introduction

This release presents information on financial help provided by local authorities for home improvement and repair under the [Regulatory Reform \(Housing Assistance\) \(England and Wales\) Order 2002 \(UK legislation\)](#). It includes information on disabled facilities grants (DFGs) approved under the [Housing Grants, Construction and Regeneration Act 1996 \(UK legislation\)](#).

Assistance is primarily aimed at improving private sector housing but is also available for social housing via housing renewal schemes. The information presented in this release is used to monitor trends in local authority activity to improve the quality of housing stock. More detailed tables showing local authority breakdowns are available on [StatsWales](#).

## Main points

- In 2022-23, the overall expenditure on assistance for housing improvement (including DFGs) was £46.6 million, which is broadly similar to expenditure in 2019-20 (before the pandemic).
- Of the overall expenditure, £35.3 million (76%) was spent on mandatory DFGs.
- The average spending per mandatory DFG was £8,900.

## Overall expenditure (including DFGs)

This section looks at the overall expenditure of local authority assisted home improvement and repair. This includes:

- direct local authority expenditure (in the form of grants and loans)

Cafodd y ddogfen hon ei lawrlwytho o LLYW.CYMRU, efallai nad dyma'r fersiwn mwyaf diweddar.

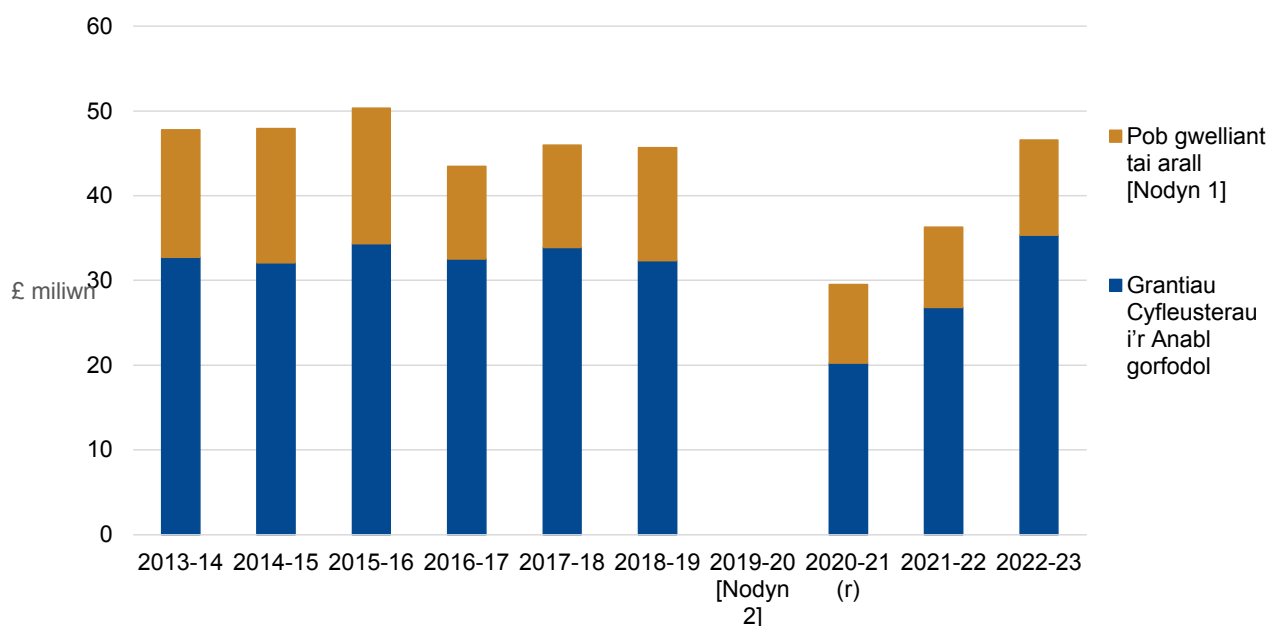
Ewch i <https://www.llyw.cymru/cymorth-ar-gyfer-gwelliannau-tai-ebrill-2022-i-fawrth-2023-html> i weld y fersiwn ddiweddaraf.

Gwybodaeth am [hawlfraint](#).

- mandatory and non-mandatory DFGs, which contribute to adaptations that enable a disabled person to continue living in their home
- indirect local authority expenditure (in the form of third-party assistance and loans facilitated by local authorities)
- financial contributions made by individual residents.

It does not include expenditure by individuals which does not involve, or is not supported by, the local authority.

**Figure 1: Overall expenditure (£ millions) on assistance for housing improvement by type of expenditure, 2013-14 to 2022-23 [Note 1]**



Description of Figure 1: A stacked column chart showing that in the past 10 years, expenditure on mandatory DFGs has varied between 67% and 76% while expenditure on other forms of housing improvement has varied between 24% and 34%.

**Cafodd y ddogfen hon ei lawrlwytho o LLYW.CYMRU, efallai nad dyma'r fersiwn mwyaf diweddar.**

Ewch i <https://www.llyw.cymru/cymorth-ar-gyfer-gwelliannau-tai-ebrill-2022-i-fawrth-2023-html> i weld y fersiwn ddiweddaraf.

Gwybodaeth am [hawlfraint](#).

Source: Annual Assistance for housing improvement and Disabled facilities grants for housing returns from local authorities.

[Note 1] Incudes non-mandatory DFGs, direct and indirect local authority assistance and residents' contributions.

[Note 2] Data not collected for 2019-20 due to impact of coronavirus (COVID-19) pandemic.

In 2022-23, the overall expenditure for home improvement and repair was £46.6 million. This marked a 28% increase on the expenditure recorded in the previous year (£36.3 million), and reached the levels observed prior to the COVID-19 pandemic (£45.7 million in 2018-19).

In 2022-23, mandatory DFGs accounted for 76% of the overall expenditure (£35.3 million). This was a small increase on the previous year (74%) and the highest proportion accounted for by mandatory DFGs in the past 10 years. In the most recent year, non-mandatory DFGs accounted for a further £2.1 million (5% of the overall expenditure).

In the past 10 years, spending on indirect local authority assistance (in the form of third-party assistance and facilitated loans) has fluctuated between £257,000 and £3.9 million. In the most recent year, £424,000 was spent on indirect local authority assistance, less than half the amount spent through this means in the previous year (£1.1 million).

**Cafodd y ddogfen hon ei lawrlwytho o LLYW.CYMRU, efallai nad dyma'r fersiwn mwyaf diweddar.**

Ewch i <https://www.llyw.cymru/cymorth-ar-gyfer-gwelliannau-tai-ebrill-2022-i-fawrth-2023-html> i weld y fersiwn ddiweddaraf.

Gwybodaeth am [hawlfraint](#).

## Figure 2: Overall expenditure (£ thousands) per 1,000 dwellings by local authority, 2022-23 [Note 1]

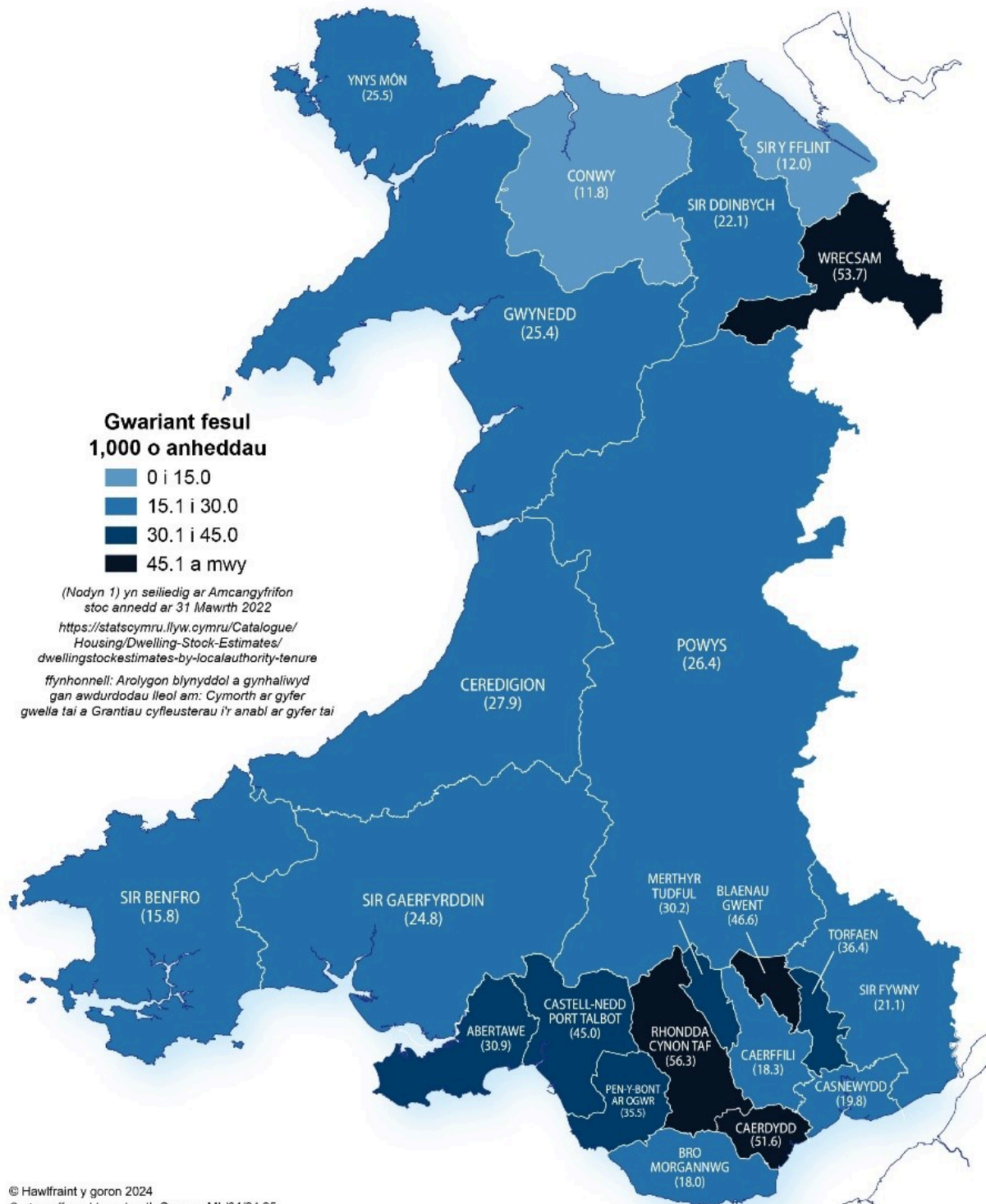
Cafodd y ddogfen hon ei lawrlwytho o LLYW.CYMRU, efallai nad dyma'r fersiwn mwyaf diweddar.

Ewch i <https://www.llyw.cymru/cymorth-ar-gyfer-gwelliannau-tai-ebrill-2022-i-fawrth-2023-html> i weld y fersiwn ddiweddaraf.

Gwybodaeth am [hawlfraint](#).

# Cymorth ar gyfer Gwelliannau Tai

**FFIGUR 2:** Cyfanswm o wariant (£ miloedd) fesul 1,000 o anheddau yn ôl yr awdurdod lleol, 2022-23 (Nodyn 1)



**Gwariant fesul 1,000 o anheddau**

- 0 i 15.0
- 15.1 i 30.0
- 30.1 i 45.0
- 45.1 a mwy

(Nodyn 1) yn seiliedig ar Amcangyfrifon stoc anedd ar 31 Mawrth 2022  
<https://statscymru.llyw.cymru/Catalogue/Housing/Dwelling-Stock-Estimates/dwellingstockestimates-by-localauthority-tenure>  
ffynhonnell: Arolygon blyneddol a gynhaliwyd gan awdurdodau lleol am: Cymorth ar gyfer gwella tai a Grantiau cyfleusterau i'r anabl ar gyfer tai

© Hawlfraint y goron 2024  
Cartograffeg • Llywodraeth Cymru • ML/01/24.25  
Ebrill 2024

**Cafodd y ddogfen hon ei lawrlwytho o LLYW.CYMRU, efallai nad dyma'r fersiwn mwyaf diweddar.**

Ewch i <https://www.llyw.cymru/cymorth-ar-gyfer-gwelliannau-tai-ebriill-2022-i-fawrth-2023-html> i weld y fersiwn ddiweddaraf.

Gwybodaeth am [hawlfraint](#).

Description Figure 2: Map showing that the greatest expenditure per 1,000 dwellings was found in Rhondda Cynon Taf, Wrexham, and Blaenau Gwent, with over £45,000 spent per 1,000 dwellings.

At a local authority level, Cardiff reported the greatest overall expenditure in 2022-23 at £8.1 million (equivalent to spending of £51,600 per 1,000 dwellings). The second and third highest expenditures were reported by Rhondda Cynon Taf (£6.2 million) and Swansea (£3.5 million). Rhondda Cynon Taf also reported the greatest spending per 1,000 dwellings (£56,300) noting an increase in the number of applications received following the easing of all covid restrictions.

Between 2021-22 and 2022-23 the largest increases in overall expenditure were observed in Rhondda Cynon Taf (from £3.0 million to £6.2 million) and Cardiff (from £6.1 million to £8.1 million). The largest increases in spending per 1,000 dwellings were observed in Blaenau Gwent (from £15,400 to £46,600) and Rhondda Cynon Taf (from £27,900 to £56,300).

## DFGs

This section of the release focuses on mandatory DFGs (approved under the **Housing Grants, Construction and Regeneration Act 1996 (UK legislation)**) and additional, non-mandatory DFGs (including 'top-up' loans and grants).

In 2022-23, £35.3 million was spent on mandatory DFGs, up 32% on the previous year and the greatest expenditure reported in the past 10 years, exceeding levels observed prior to the pandemic.

### Figure 3: Average expenditure (£) per mandatory DFG by

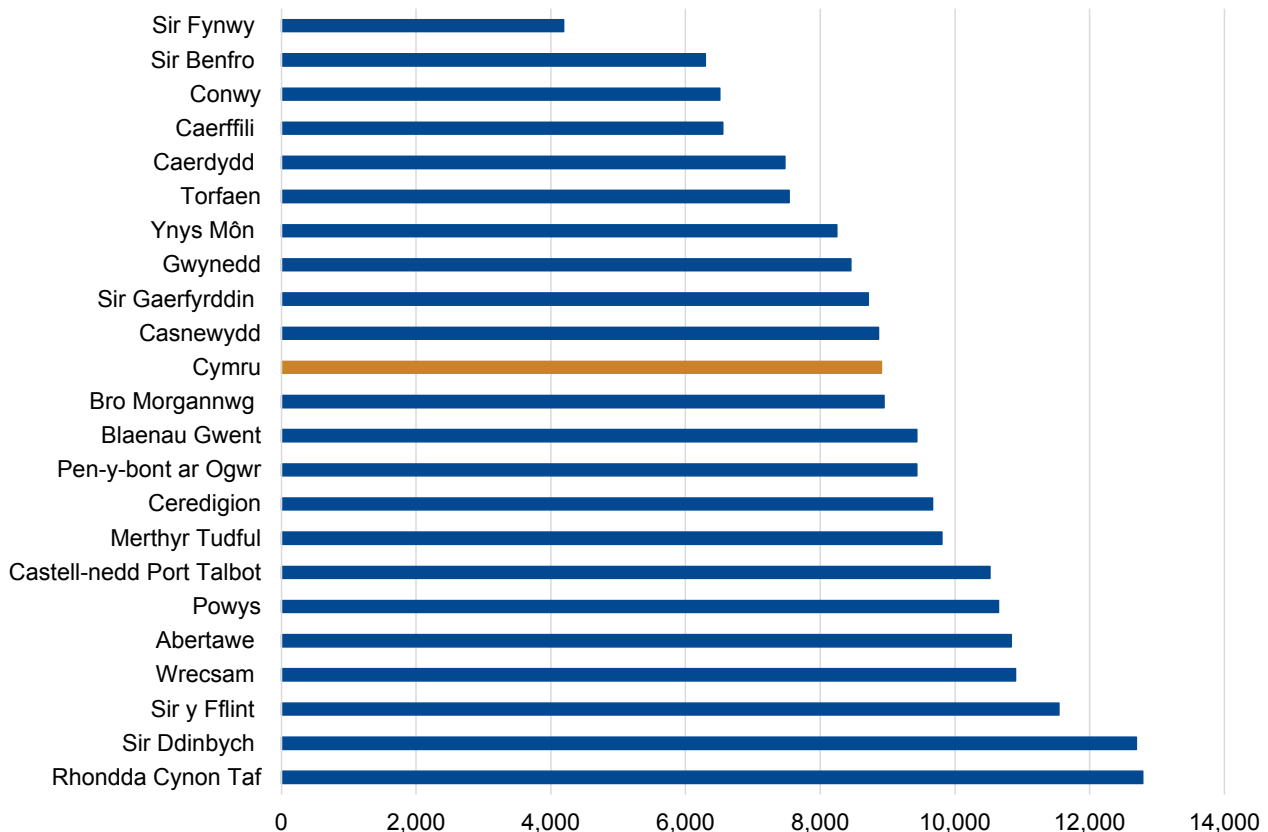
Cafodd y ddogfen hon ei lawrlwytho o LLYW.CYMRU, efallai nad dyma'r fersiwn mwyaf diweddar.

Ewch i <https://www.llyw.cymru/cymorth-ar-gyfer-gwelliannau-tai-ebrill-2022-i-fawrth-2023-html> i weld y fersiwn ddiweddaraf.

Gwybodaeth am [hawlfraint](#).



## local authority, 2022-23



Description of Figure 3: A clustered bar chart showing that the average spending per DFG by local authority described in text below.

Source: Annual Assistance for housing improvement and Disabled facilities grants for housing returns from local authorities.

In the most recent year, a total of 3,966 mandatory DFGs were completed. The average spending per mandatory DFG was £8,900, an increase of £800 from the previous year. At a local authority level, average expenditure per mandatory DFG varied from £12,800 in Rhondda Cynon Taf to £4,200 in Monmouthshire.

In 2022-23, a further £2.1 million was spent on non-mandatory DFGs. This

**Cafodd y ddogfen hon ei lawrlwytho o LLYW.CYMRU, efallai nad dyma'r fersiwn mwyaf diweddar.**

Ewch i <https://www.llyw.cymru/cymorth-ar-gyfer-gwelliannau-tai-ebrill-2022-i-fawrth-2023-html> i weld y fersiwn ddiweddaraf.

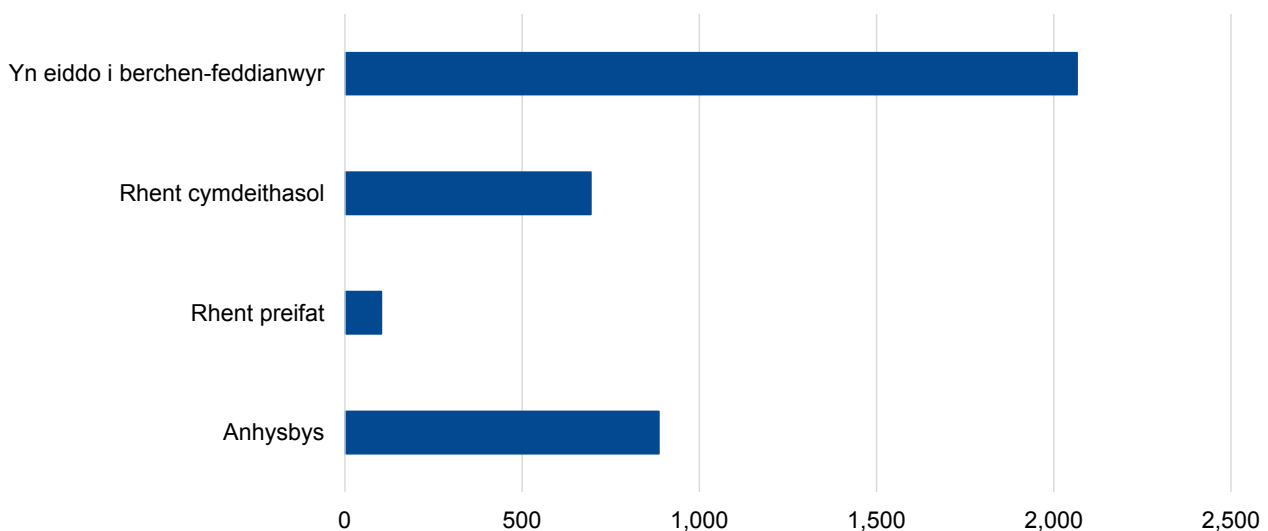
Gwybodaeth am [hawlfraint](#).

marked a 28% increase on 2021-22 and a return to the average observed in earlier years (£2.1 million between 2016-17 and 2018-19).

## Housing improvement (excluding DFGs)

In 2022-23, £9.1 million was spent on housing improvement through local authority grants, loans, third-party assistance and residents' contributions. This marked an increase of 17% on 2021-22. In total, 3,750 dwellings were improved through this expenditure, up 5% on the previous year. Despite these increases, the expenditure and number of dwellings improved remained lower than earlier years (in 2018-19, £11.3 million was spent on the improvement of 6,727 homes). The average spending per dwelling was £2,400, consistent with the past 10 years.

**Figure 4: Number of dwellings improved by tenure, 2022-23 [Note 1]**



Description of Figure 4: A clustered bar chart showing the number of dwellings

**Cafodd y ddogfen hon ei lawrlwytho o LLYW.CYMRU, efallai nad dyma'r fersiwn mwyaf diweddar.**

Ewch i <https://www.llyw.cymru/cymorth-ar-gyfer-gwelliannau-tai-ebrill-2022-i-fawrth-2023-html> i weld y fersiwn ddiweddaraf.

Gwybodaeth am [hawlfraint](#).

improved by tenure in 2022-23, described in text below.

Source: Annual Assistance for housing improvement and Disabled facilities grants for housing returns from local authorities.

[Note 1] Excludes dwellings improved through DFGs only.

In 2022-23, the majority of improved dwellings were owner occupied (55%). A smaller proportion of improvements took place in socially rented (19%) or privately rented dwellings (3%). The proportion of improved dwellings which were accounted for by owner occupiers has ranged between 54% and 66% over the past 10 years.

In the most recent year, 66% of dwellings were improved for people with disabilities and 25% for elderly people (aged 60 and above). Whilst there have been more fluctuations in the distribution of improved dwellings by recipient type, these proportions are similar to the average recorded in the past 5 years (between 2016-17 and 2020-21 (65% of improved dwellings were occupied by people with disabilities and 25% by elderly people). Please note that if a recipient falls into both disability and elderly categories, they will have been counted in the disability category only.

There is a great deal of variability in the direct assistance provided at a local authority level, due to different housing improvement assistance policies and grant schemes. In 2022-23, only 5 of the 22 local authorities reported any non-DFG expenditure and Rhondda Cynon Taf alone accounted for 19% of this.

## Renewal areas

Renewal areas were established to improve housing and general amenities of an area where social and environmental problems are combined with poor

**Cafodd y ddogfen hon ei lawrlwytho o LLYW.CYMRU, efallai nad dyma'r fersiwn mwyaf diweddar.**

Ewch i <https://www.llyw.cymru/cymorth-ar-gyfer-gwelliannau-tai-ebrill-2022-i-fawrth-2023-html> i weld y fersiwn ddiweddaraf.

Gwybodaeth am [hawlfraint](#).

housing. Area-based renewal schemes enabled local authorities to focus activity and investment on areas that combine a need for assistance with the potential for regeneration.

Renewal area expenditure has steadily decreased in the past 10 years, from £33.6 million in 2012-13 to £295,000 in 2022-23. In the most recent year, all renewal area expenditure (£295,000) was accounted for by a group repair scheme in Conwy.

## Future collections

In July 2021 a research report summarising information on **housing adaptations completed within the period 1 April 2019 to 31 March 2020** was published. The data within this report was collected directly from Care & Repair agencies, local authorities and housing associations by the Welsh Government. Submissions were received from all 13 Care & Repair agencies, from all 22 local authorities, and from 29 housing associations. Six housing associations, two of which were the Large Scale Voluntary Transfer bodies which took over the ownership of former council housing, did not submit returns. This report does not therefore provide a complete national picture of the delivery of housing adaptations. However, given the scope of this data collection, we are considering whether it could replace the information currently collected annually from local authorities on assistance for housing improvement as published within this release. We will be reviewing the content and scope of this release in due course and welcome any feedback on these early proposals.

Please provide your comments by email to:

[stats.housingconditions@gov.wales](mailto:stats.housingconditions@gov.wales)

Cafodd y ddogfen hon ei lawrlwytho o LLYW.CYMRU, efallai nad dyma'r fersiwn mwyaf diweddar.

Ewch i <https://www.llyw.cymru/cymorth-ar-gyfer-gwelliannau-tai-ebrill-2022-i-fawrth-2023-html> i weld y fersiwn ddiweddaraf.

Gwybodaeth am [hawlfraint](#).

# Quality and methodology information

## National Statistics status

The **United Kingdom Statistics Authority** has designated these statistics as National Statistics, in accordance with the Statistics and Registration Service Act 2007 and signifying compliance with the **Code of Practice for Statistics**.

National Statistics status means that official statistics meet the highest standards of trustworthiness, quality and public value.

All official statistics should comply with all aspects of the Code of Practice for Statistics. They are awarded National Statistics status following an assessment by the UK Statistics Authority's regulatory arm. The Authority considers whether the statistics meet the highest standards of Code compliance, including the value they add to public decisions and debate.

It is Welsh Government's responsibility to maintain compliance with the standards expected of National Statistics. If we become concerned about whether these statistics are still meeting the appropriate standards, we will discuss any concerns with the Authority promptly. National Statistics status can be removed at any point when the highest standards are not maintained, and reinstated when standards are restored.

The continued designation of these statistics as National Statistics was confirmed in 2012 following **assessment** by the Office for Statistics Regulation.

Since the latest review by the Office for Statistics Regulation, we have continued to comply with the Code of Practice for Statistics, and have made the following improvements:

- Expanded commentary to include more policy and operational context.

Cafodd y ddogfen hon ei lawrlwytho o LLYW.CYMRU, efallai nad dyma'r fersiwn mwyaf diweddar.

Enwch i <https://www.llyw.cymru/cymorth-ar-gyfer-gwelliannau-tai-ebrill-2022-i-fawrth-2023-html> i weld y fersiwn ddiweddaraf.

Gwybodaeth am [hawlfraint](#).

- Clarified the scope of the release (i.e., local authority expenditure in a given 12-month period).
- Enhanced trustworthiness by reducing/removing pre-release access.

## Well-being of Future Generations Act (WFG)

The Well-being of Future Generations Act 2015 is about improving the social, economic, environmental and cultural wellbeing of Wales. The Act puts in place seven wellbeing goals for Wales. These are for a more equal, prosperous, resilient, healthier and globally responsible Wales, with cohesive communities and a vibrant culture and thriving Welsh language. Under section (10)(1) of the Act, the Welsh Ministers must (a) publish indicators (“national indicators”) that must be applied for the purpose of measuring progress towards the achievement of the wellbeing goals, and (b) lay a copy of the national indicators before Senedd Cymru. Under section 10(8) of the Well-being of Future Generations Act, where the Welsh Ministers revise the national indicators, they must as soon as reasonably practicable (a) publish the indicators as revised and (b) lay a copy of them before the Senedd. These national indicators were laid before the Senedd in 2021. The indicators laid on 14 December 2021 replace the set laid on 16 March 2016.

Information on the indicators, along with narratives for each of the wellbeing goals and associated technical information is available in the [Well-being of Wales report](#).

Further information on the [Well-being of Future Generations \(Wales\) Act 2015](#).

The statistics included in this release could also provide supporting narrative to the national indicators and be used by public services boards in relation to their local wellbeing assessments and local wellbeing plans.

Cafodd y ddogfen hon ei lawrlwytho o LLYW.CYMRU, efallai nad dyma'r fersiwn mwyaf diweddar.

Ewch i <https://www.llyw.cymru/cymorth-ar-gyfer-gwelliannau-tai-ebrill-2022-i-fawrth-2023-html> i weld y fersiwn ddiweddaraf.

Gwybodaeth am [hawlfraint](#).

# Manylion cyswilt

Ystadegydd: Emily Rowlands

E-bost: [ystadegau.amodautai@llyw.cymru](mailto:ystadegau.amodautai@llyw.cymru)

Cyfryngau: 0300 025 8099

SFR 18/2024



**Efallai na fydd y ddogfen hon yn hollol hygyrch.**

Drllenwch ein [datganiad hygyrchedd](#) i gael rhagor o wybodaeth.

**Cafodd y ddogfen hon ei lawrlwytho o LLYW.CYMRU, efallai nad dyma'r fersiwn mwyaf diweddar.**

Ewch i <https://www.llyw.cymru/cymorth-ar-gyfer-gwelliannau-tai-ebrill-2022-i-fawrth-2023-html> i weld y fersiwn ddiweddaraf.

Gwybodaeth am [hawlfraint](#).