



Llywodraeth Cymru  
Welsh Government

Llywodraeth Cymru / Welsh  
Government

## A487 New Dyfi Bridge

Environmental Statement -  
Volume 3: Appendix 15.5

Site Walkover Photo Plates

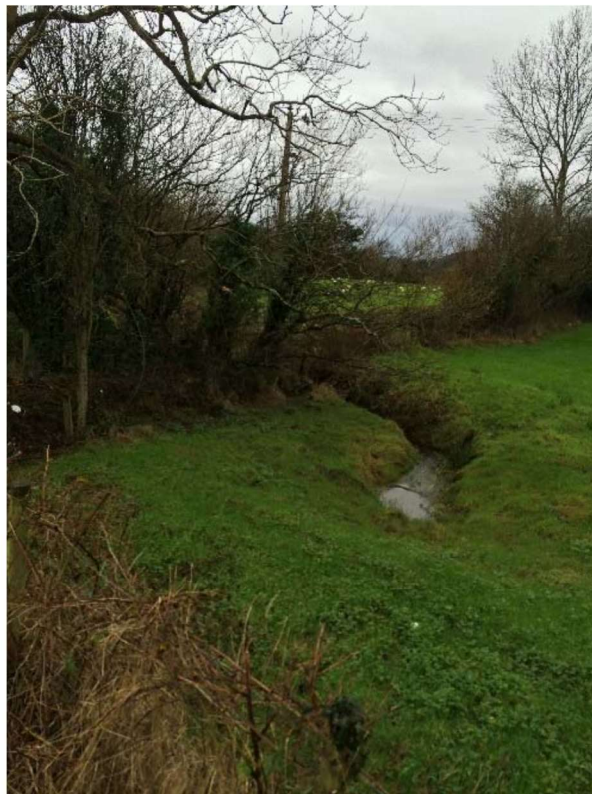
Final Issue | March 2016



## Appendix 15.5 Photo Plates



**Photo 1: Rain and floodwaters standing in a meander scar on the floodplain south of the river and the proposed viaduct**



**Photo 2 a – Southern drainage ditch looking south west**



**Photo 2 b – Southern drainage ditch looking north east**



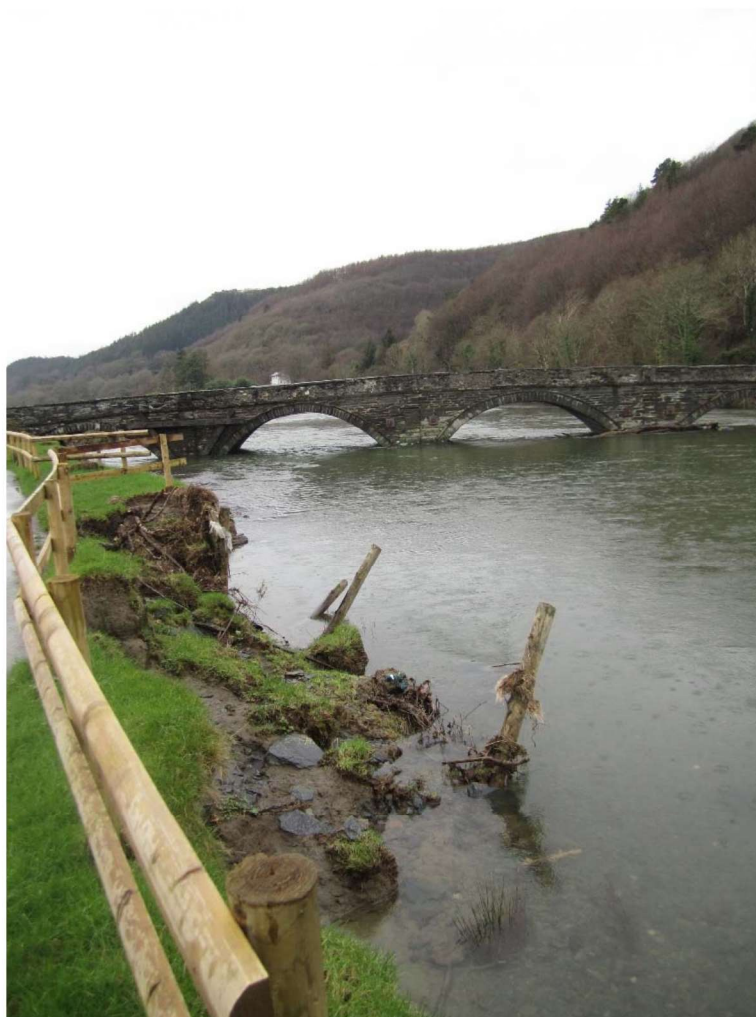
**Photo 3: Outside of meander bend (right bank) showing retaining wall and steep bank with mature trees**



**Photo 4: Looking downstream at coupled bar deposition and bank erosion resulting in lateral migration and the formation of a meander bend upstream of the Millennium Bridge**



**Photo 5: Looking upstream at eroded area of left bank immediately downstream of the Millennium bridge**



**Photo 6: Looking downstream at bank erosion occurring on the left bank near the Pont-ar-Ddyfi**