

NOTES:

1. Annotation codes: LE = Landscape elements, EF = Environmental Function. Refer to ES report Chapter 8, Section 8.7 for details.
2. Unless otherwise stated all proposed embankment slopes have a 1 in 2 gradient with a rounded top and bottom profile to tie into the prevailing landform.
3. All planting shall take account of existing and proposed underground and overhead services, sightlines and maintenance access requirements. Where required, services shall be placed in ducts to allow for continuous areas of planting as a part of the protected species and/or landscape and visual mitigation measures.
4. Sightlines and forward visibility requirements have been accounted for in the environmental design with planting 'set backs' for verge widths, embankments and cuttings, vehicle restraint systems and boundary walls.
5. For existing utilities see Figure 8.7 (Baseline Environmental Plans), the Environmental Masterplan design shown has taken them into account.

P01.1	----	----	----	----
Rev	Date	By	Chkd	Appd



Blythe Gate Blythe Valley Park
Solihull B90 8AE
Tel +44 121 213 3000 Fax +44 121 213 3001
www.arup.com

Project Title
A487 New Dyfi Bridge

Client

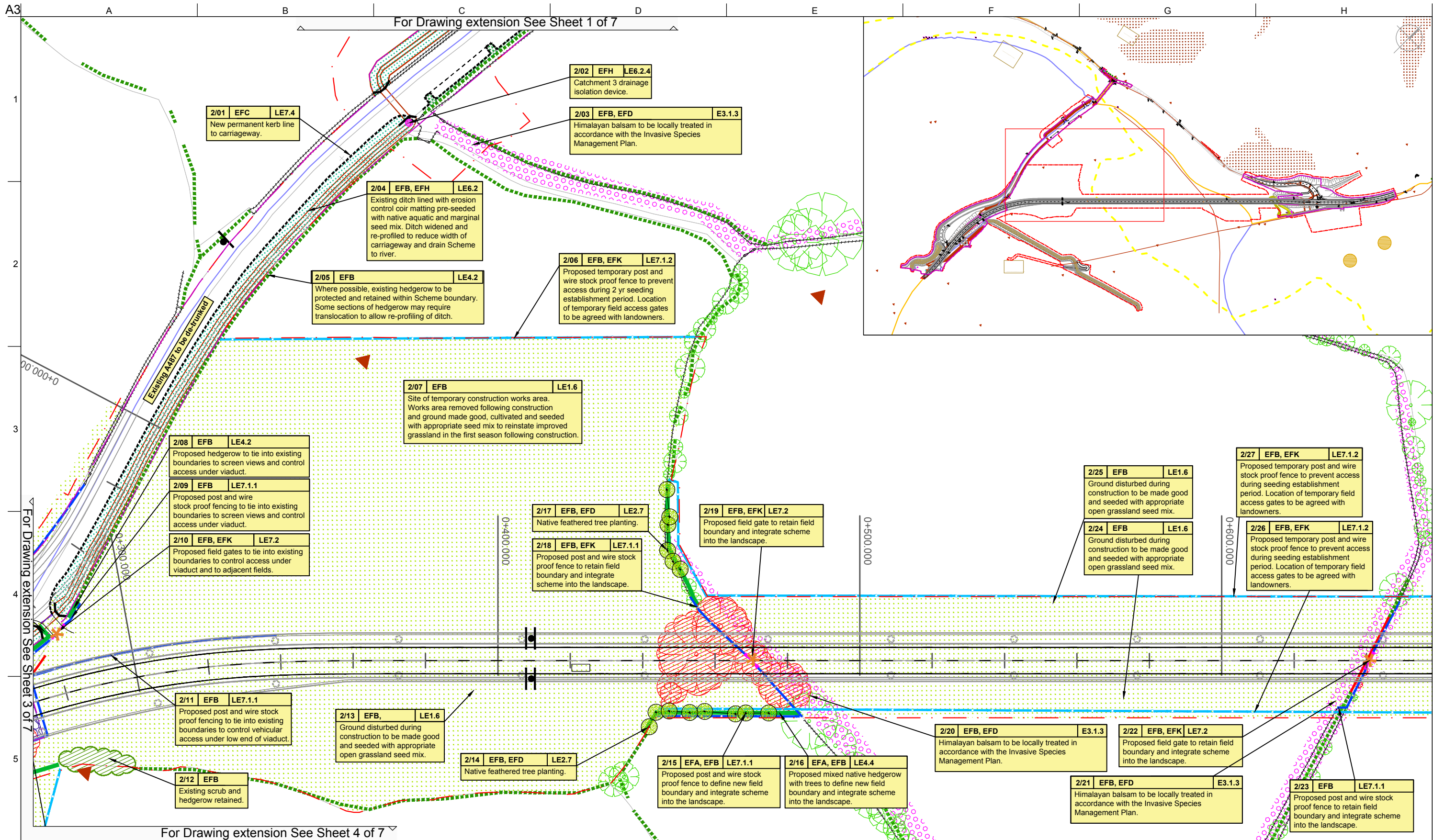


Llywodraeth Cymru
Welsh Government

Drawing Title
Figure 8.9
Environmental Masterplan
Sheet 1 of 7

Scale at A3
1:1000

Role	Landscape Architect- Design
Suitability	S0 - Initial non-contractual
Arup Job No	244562-00
Rev	P01.1
Name	900237-ARP-ZZ-ZZ-DR-LD-00011



NOTES:

- Annotation codes: LE = Landscape elements, EF = Environmental Function. Refer to ES report Chapter 8, Section 8.7 for details.
- Unless otherwise stated all proposed embankment slopes have a 1 in 2 gradient with a rounded top and bottom profile to tie into the prevailing landform.
- All planting shall take account of existing and proposed underground and overhead services, sightlines and maintenance access requirements. Where required, services shall be placed in ducts to allow for continuous areas of planting as a part of the protected species and/or landscape and visual mitigation measures.
- Sightlines and forward visibility requirements have been accounted for in the environmental design with planting 'set backs' for verge widths, embankments and cuttings, vehicle restraint systems and boundary walls.
- For existing utilities see Figure 8.7 (Baseline Environmental Plans), the Environmental Masterplan design shown has taken them into account.

P01.1					
Rev	Date	By	Chkd	Appd	

ARUP **GRIFFITHS**
civil engineering and construction

WHS

Blythe Gate Blythe Valley Park
Solihull B90 8AE
Tel +44 121 213 3000 Fax +44 121 213 3001
www.arup.com

Project Title
A487 New Dyfi Bridge

Client

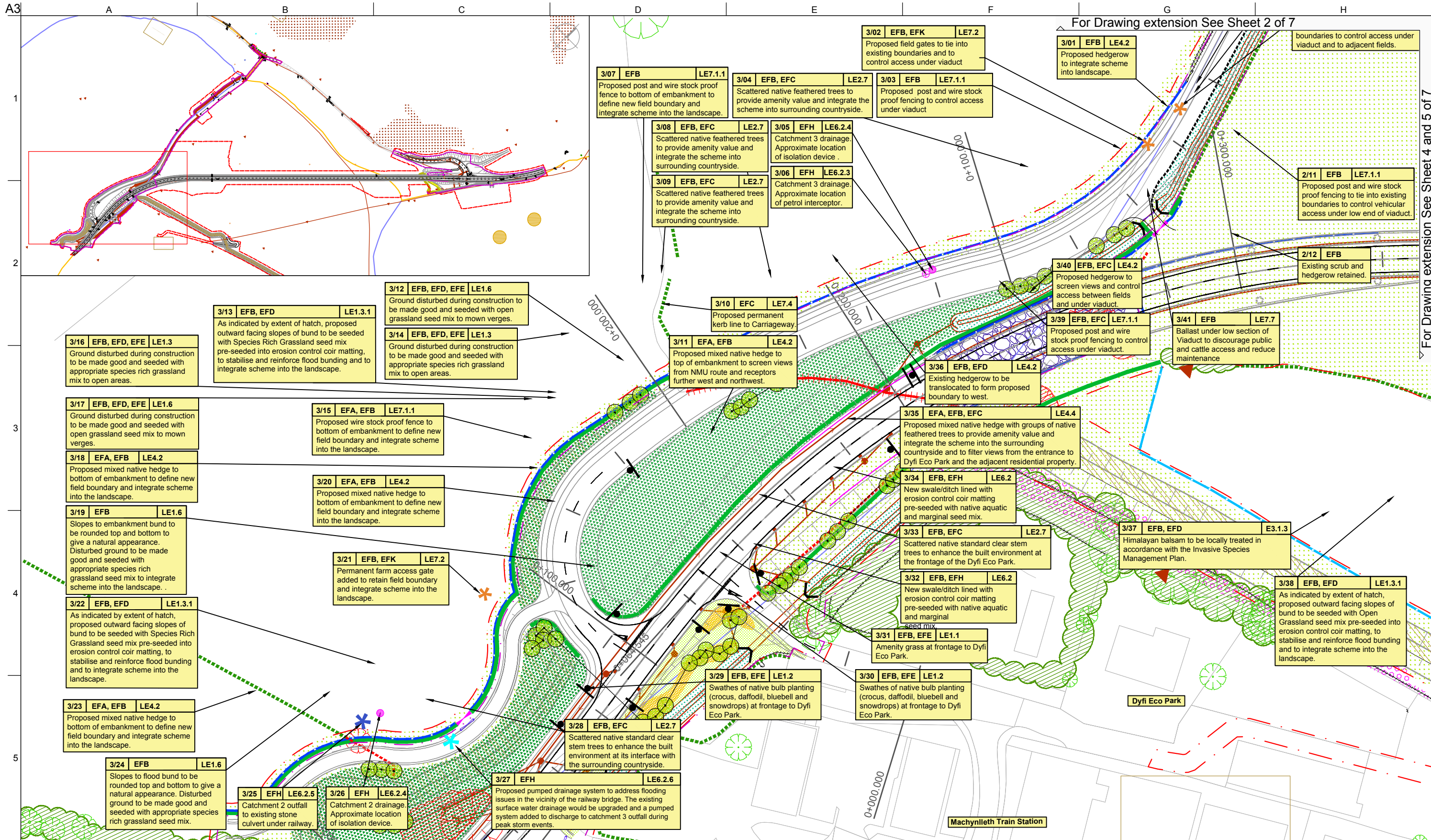


Llywodraeth Cymru
Welsh Government

Drawing Title
**Figure 8.9
Environmental Masterplan
Sheet 2 of 7**

Scale at A3
1:1000

Role	Landscape Architect- Design
Suitability	S0 - Initial non-contractual
Arup Job No	Rev
244562-00	P01.1
Name	
900237-ARP-ZZ-ZZ-DR-LD-00012	



NOTES:

- Annotation codes: LE = Landscape elements, EF = Environmental Function. Refer to ES report Chapter 8, Section 8.7 for details.
- Unless otherwise stated all proposed embankment slopes have a 1 in 2 gradient with a rounded top and bottom profile to tie into the prevailing landform.
- All planting shall take account of existing and proposed underground and overhead services, sightlines and maintenance access requirements. Where required, services shall be placed in ducts to allow for continuous areas of planting as a part of the protected species and/or landscape and visual mitigation measures.
- Sightlines and forward visibility requirements have been accounted for in the environmental design with planting 'set backs' for verge widths, embankments and cuttings, vehicle restraint systems and boundary walls.
- For existing utilities see Figure 8.7 (Baseline Environmental Plans), the Environmental Masterplan design shown has taken them into account.

P01.1					
Rev	Date	By	Chkd	Appd	


ARUP **GRIFFITHS**
civil engineering and construction

WHS

Blythe Gate Blythe Valley Park
Solihiuli B90 8AE
Tel +44 121 213 3000 Fax +44 121 213 3001
www.arup.com

Project Title
A487 New Dyfi Bridge

Client


Llywodraeth Cymru
Welsh Government

Drawing Title
**Figure 8.9
Environmental Masterplan
Sheet 3 of 7**

Scale at A3
1:1000

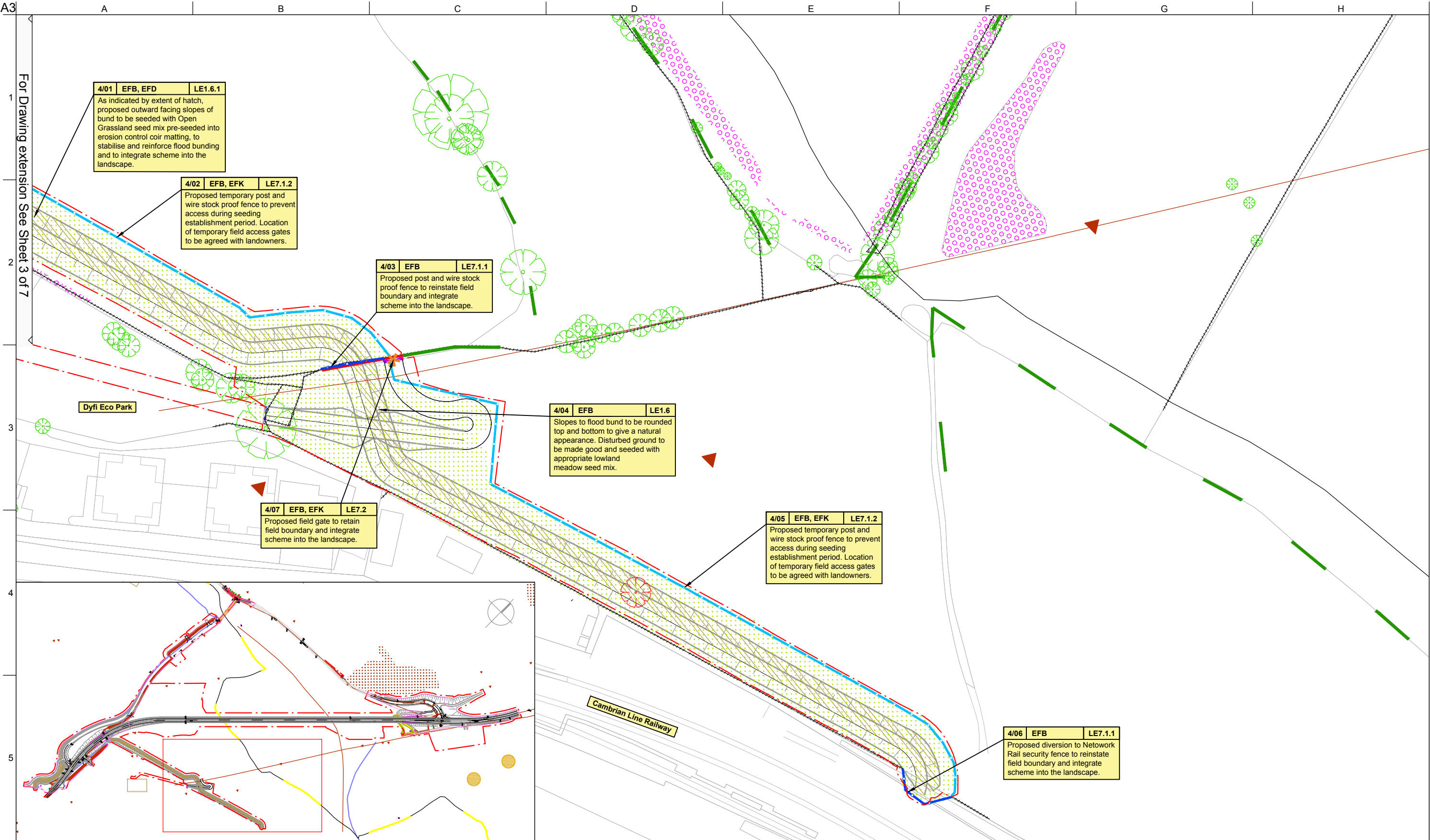
Role
Landscape Architect- Design

Suitability
S0 - Initial non-contractual

Arup Job No
244562-00

Rev
P01.1

Name
900237-ARP-ZZ-ZZ-DR-LD-00003



NOTES:

1. Annotation codes: LE = Landscape elements, EF = Environmental Function. Refer to ES report Chapter 8, Section 8.7 for details.
2. Unless otherwise stated all proposed embankment slopes have a 1 in 2 gradient with a rounded top and bottom profile to tie into the prevailing landform.
3. All planting shall take account of existing and proposed underground and overhead services, sightlines and maintenance access requirements. Where required, services shall be placed in ducts to allow for continuous areas of planting as a part of the protected species and/or landscape and visual mitigation measures.
4. Sightlines and forward visibility requirements have been accounted for in the environmental design with planting 'set backs' for verge widths, embankments and cuttings, vehicle restraint systems and boundary walls.
5. For existing utilities see Figure 8.7 (Baseline Environmental Plans), the Environmental Masterplan design shown has taken them into account.

P01.1					
Rev	Date	By	Chkd	Appd	

ARUP

GRIFFITHS
civil engineering and construction

WHS

Blythe Gate Blythe Valley Park
Solihull B90 8AE
Tel +44 121 213 3000 Fax +44 121 213 3001
www.arup.com

Project Title
A487 New Dyfi Bridge

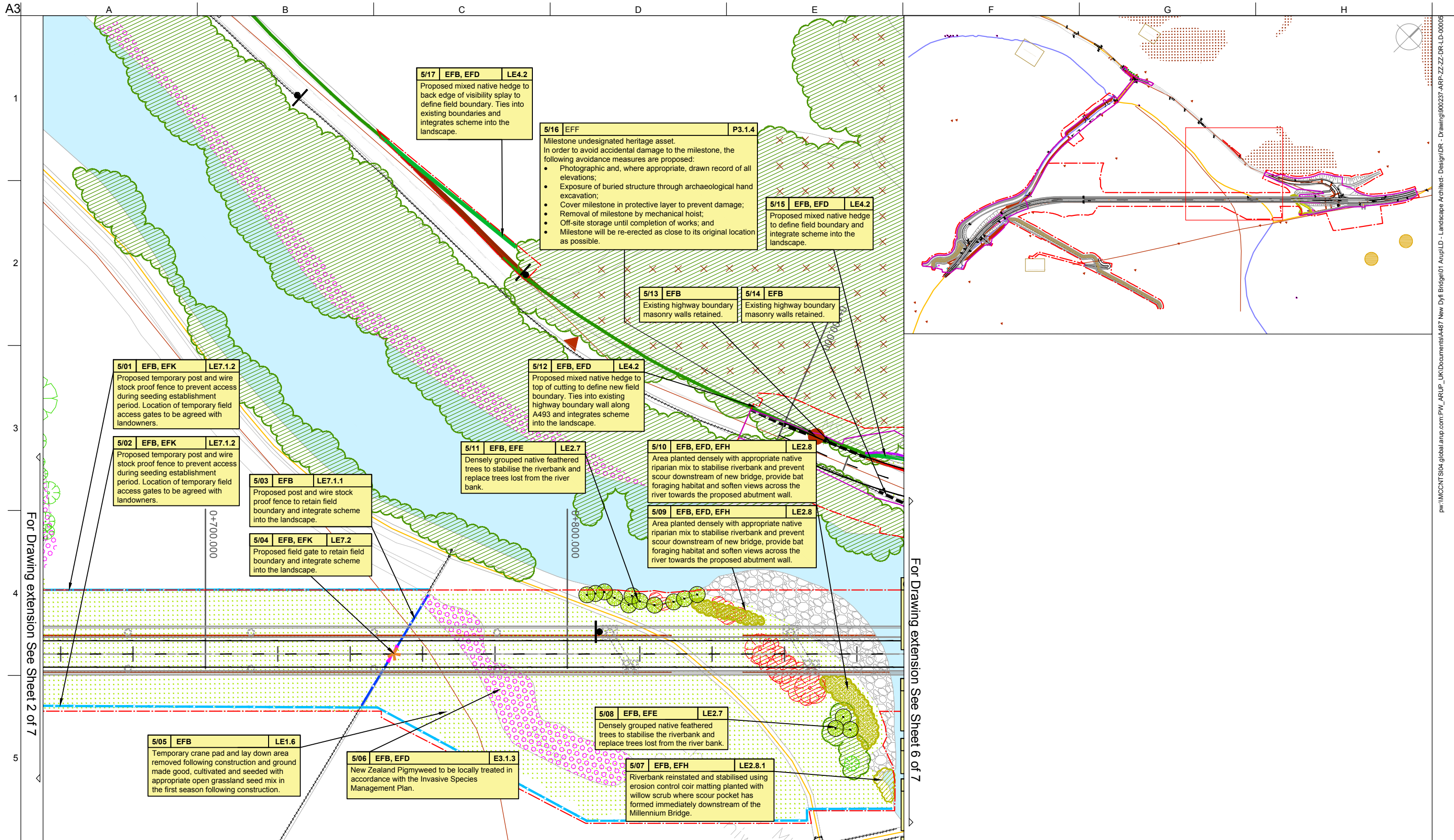
Client



Drawing Title
Figure 8.9
Environmental Masterplan
Sheet 4 of 7

Scale at A3
1:1000

Role	Landscape Architect- Design
Suitability	S0 - Initial non-contractual
Arup Job No	Rev
244562-00	P01.1
Name	
900237-ARP-ZZ-ZZ-DR-LD-00024	



NOTES:

1. Annotation codes: LE = Landscape elements, EF = Environmental Function. Refer to ES report Chapter 8, Section 8.7 for details.
2. Unless otherwise stated all proposed embankment slopes have a 1 in 2 gradient with a rounded top and bottom profile to tie into the prevailing landform.
3. All planting shall take account of existing and proposed underground and overhead services, sightlines and maintenance access requirements. Where required, services shall be placed in ducts to allow for continuous areas of planting as a part of the protected species and/or landscape and visual mitigation measures.
4. Sightlines and forward visibility requirements have been accounted for in the environmental design with planting 'set backs' for verge widths, embankments and cuttings, vehicle restraint systems and boundary walls.
5. For existing utilities see Figure 8.7 (Baseline Environmental Plans), the Environmental Masterplan design shown has taken them into account.

P01.1					
Rev	Date	By	Chkd	Appd	

ARUP **GRIFFITHS**
civil engineering and construction
WHS

Blythe Gate Blythe Valley Park
Sollihull B90 8AE
Tel +44 121 213 3000 Fax +44 121 213 3001
www.arup.com

Project Title
A487 New Dyfi Bridge

Client



Drawing Title
**Figure 8.9
Environmental Masterplan
Sheet 5 of 7**

Scale at A3
1:1000

Role
Landscape Architect- Design

Suitability
S0 - Initial non-contractual

Arup Job No
244562-00

Name
900237-ARP-ZZ-ZZ-DR-LD-00005

Rev
P01.1

1

2

3

4

5

Planning Policy Features

- P2.1: Statutory landscape designations (Snowdonia National Park)
- P2.2.1: Important invertebrate area
- P2.2.2 Moss/bryophyte area
- P2.2.3: Ancient Woodland
- P3.1.1: Scheduled Monument
- P3.1.2: Listed Buildings
- P3.1.3: Undesignated heritage asset
- P3.1.4: Undesignated milestone heritage asset
- P3.1.5: Undesignated linear heritage asset
- P4.4.1: Footpath
- P4.4.2: NCN Cycle Path

Existing to be retained

- Tree
- Hedgerow
- Woodland
- Amenity shrubs
- Shingle beach
- Afon Dyfi
- Stone wall
- Fence and gate
- Roads

Existing to be removed

- Woodland / scrub
- Trees
- Hedgerow
- Hedgerow to be translocated

Environmental Elements

- E3.1.1: Bat roost
- E3.1.2: Bat flight line
- E3.1.3: Invasive plant species

Proposed Scheme

- Scheme boundary
- Highway boundary
- A487 viaduct
- Viaduct abutment walls
- Viaduct columns
- Earthworks
- Road chainage
- Concrete underpass
- Road sign
- Vehicle Restraint System (VRS)

Proposed Environmental Elements

- E3.2.1: Badger tunnel
- E3.2.2: Mammal proof timber post and wire fence

Proposed Landscape Elements

Grassland (LE1)

- LE1.1: Amenity grass
- LE1.2: Grass with bulbs
- LE1.3: Species rich grassland
- LE1.3.1: Coir matting pre-seeded with species rich grassland
- LE1.6: Open grassland
- LE1.6.1: Coir matting pre-seeded with open grassland seed mix
- LE1.7: Coir matting pre-seeded with woodland ground flora mix

Native Planting (LE2)

- LE2.1.1: Mixed woodland and shrub planting
- LE2.7: Scattered trees
- LE2.8: Scrub
- LE2.8.1 Coir matting planted with willow scrub

Wetland Drainage (LE6)

- LE6.2: Coir matting pre-seeded with marginal planting to banks and ditches
- LE6.2.0: Proposed drainage ditch
- LE6.2.1: Carrier pipe
- LE6.2.2: Culvert headwall
- LE6.2.3: Petrol interceptor
- LE6.2.4: Isolation device
- LE6.2.5: Drainage outfalls
- LE6.2.6: Pumped drainage system

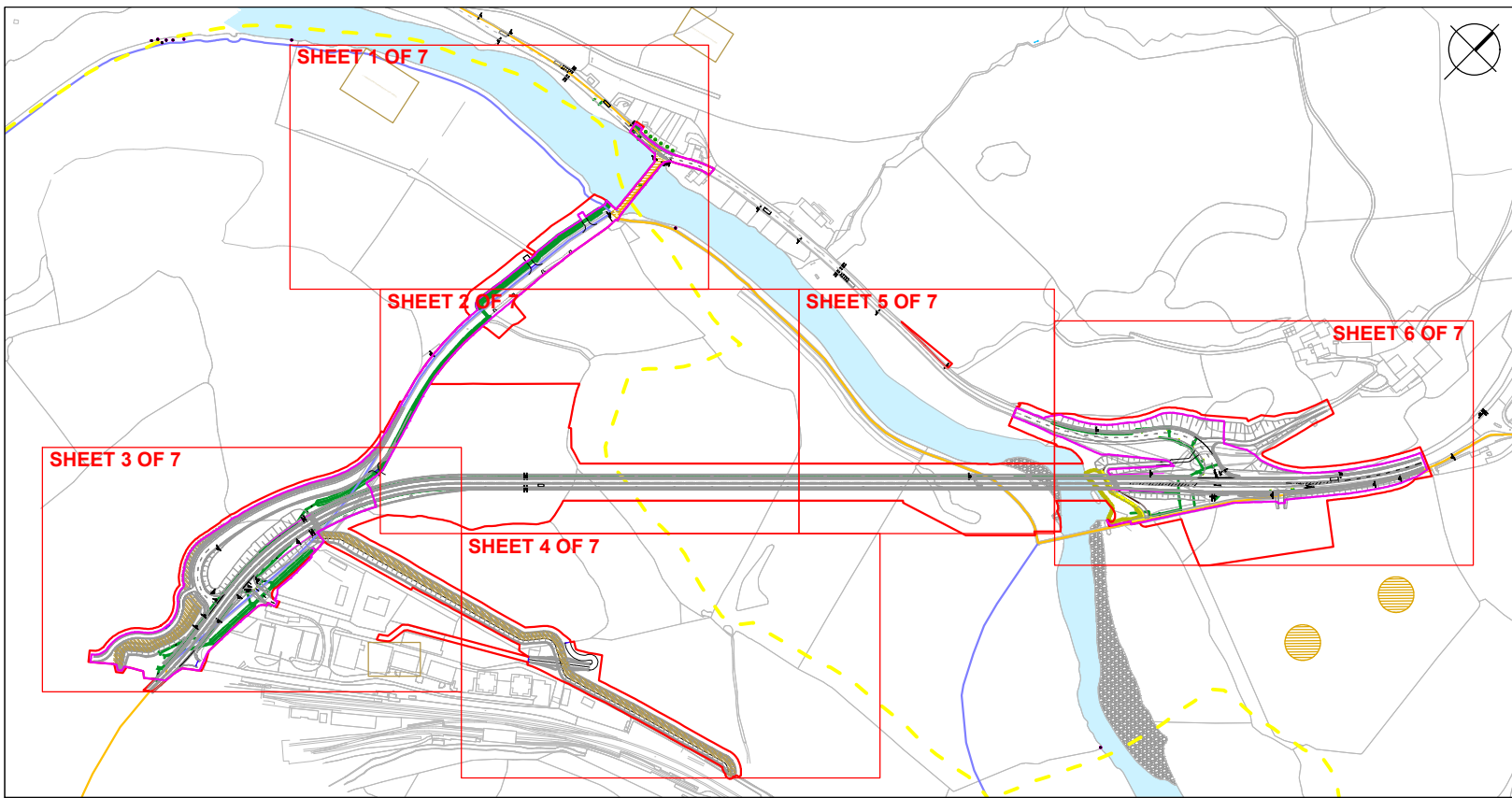
Hedges (LE4)

- LE4.2: Native species hedges
- LE4.4: Native hedgerows with trees

Hard Landscape (LE7)

- LE7.1.1: Stock proof timber post and wire fence
- LE7.1.2: Temporary stock proof timber post and wire fence
- LE7.1.3: Timber post and rail fence
- LE7.2: Proposed field gate
- LE7.3: Slate masonry faced wall
- LE7.4: Road kerb line
- LE7.5: De-mountable bollards
- LE7.7: Ballast

DRAWING SHEET LOCATION PLAN



ENVIRONMENTAL FUNCTIONS

Taken from Design Manual for Roads & Bridges, Volume 2 Part 2

Ref	Dataset	Core Data	As-and-When
EFA	Visual Screening	•	
EFB	Landscape Integration	•	
EFC	Enhancing the Built Environment	•	
EFD	Nature Conservation & Biodiversity	•	
EFE	Visual Amentity	•	
EFF	Heritage	•	
EFG	Auditory Amentity	•	
EFH	Water Quality	•	
EFK	Access	•	

NOTES:
Landscape Elements (LE) to be read in conjunction with Design Manual for Roads and Bridges - Volume 10, Part 3.

P01.1	----	----	----	----
Rev	Date	By	Chkd	Appd

ARUP
Blythe Gate Blythe Valley Park
Solihull B90 8AE
Tel +44 121 213 3000 Fax +44 121 213 3001
www.arup.com

GRIFFITHS
civil engineering and construction

WHS

Project Title
A487 New Dyfi Bridge

Client



Drawing Title
Figure 8.9
Environmental Masterplan
Sheet 7 of 7

Scale at A3
NTS

Role
Landscape Architect- Design

Suitability
S0 - Initial non-contractual

Arup Job No
244562-00

Name
900237-ARP-ZZ-ZZ-DR-LD-00017

Rev
P01.1