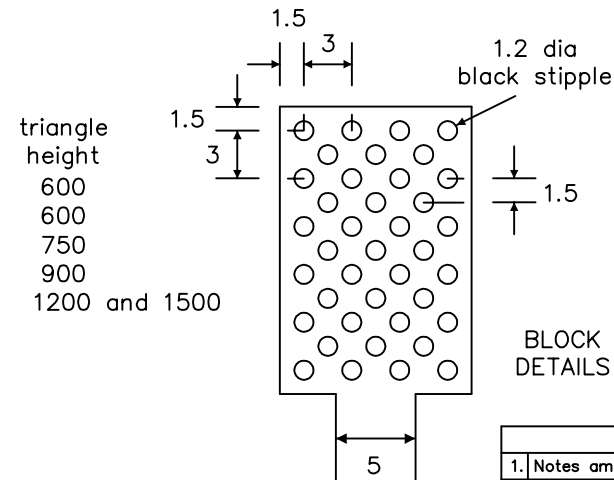
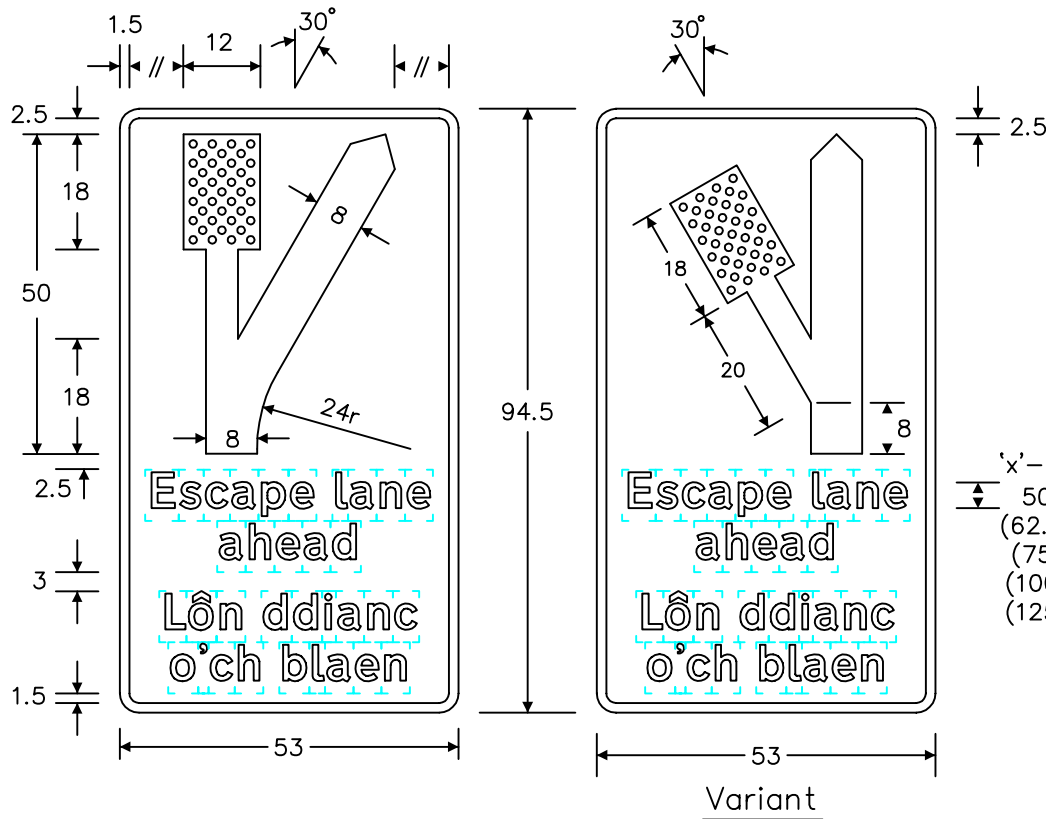


Notes: -

1. The legend is from the Transport Medium alphabet at the 'x'-heights shown.
2. The outlines of the tiles do not form part of the sign.
3. The colours are as follows: -
 Background _____ Blue
 Stippling _____ Black
 Border, legend, arrow _____ White
 & route symbol
4. The illumination of the sign must accord with the requirements of the current 'Traffic Signs Regulations and General Directions'.
5. The 'x'-heights shown are given in millimetres, all other dimensions are given in stroke widths (i.e. 1s/w = 1/4'x'-height).
6. The order of languages may be reversed if required.



triangle height	'x'-ht.
600	50
600	(62.5)
750	(75)
900	(100)
1200 and 1500	(125)

REVISIONS	
1.	Notes amended, table added 4.11.87
2.	Dims. chgd., table removed, no. chgd. from WBM 377 28.8.96
3.	Redrawn & notes amended 22.8.03
4.	New variant added 3.10.05

Before using this drawing, confirm with RNM3 Division that it has not been superseded.

Drn. A.T.I.	Appd.
Chkd.	Appl. date 25.7.85

Issue: 3.10.05

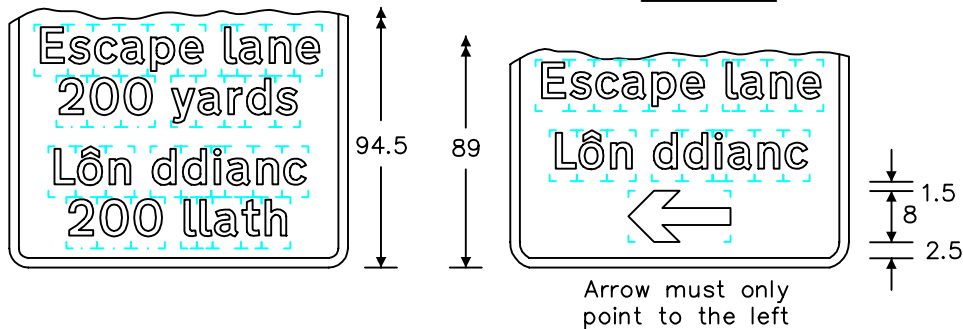
Scale: Photo-reduced

Title Supplementary Plates
ESCAPE LANE AHEAD
 used with P 523.1 or
 WAG/P 554.1 and P 562

WELSH ASSEMBLY GOVERNMENT

Drwg. no. **WAG/P 817.2**

Variants



Arrow must only point to the left