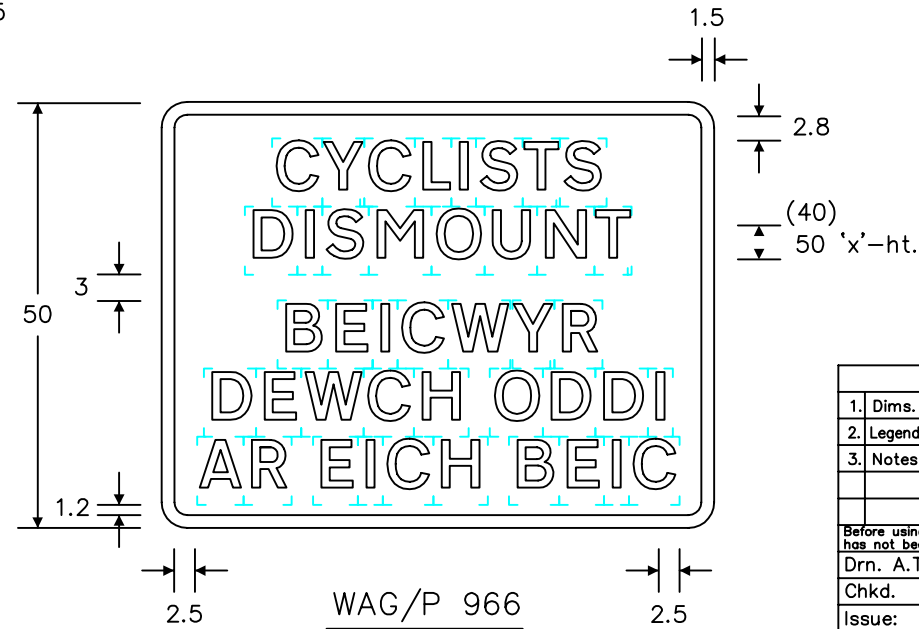
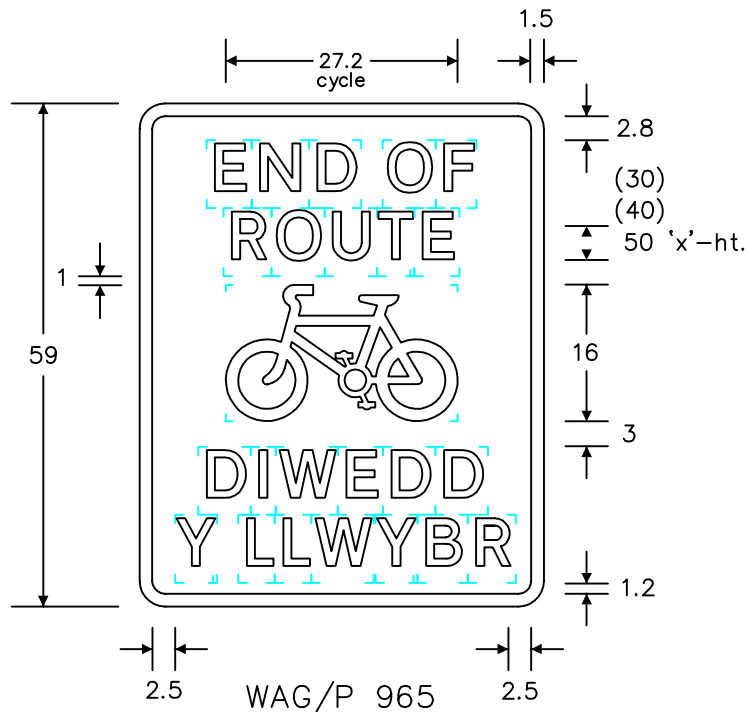
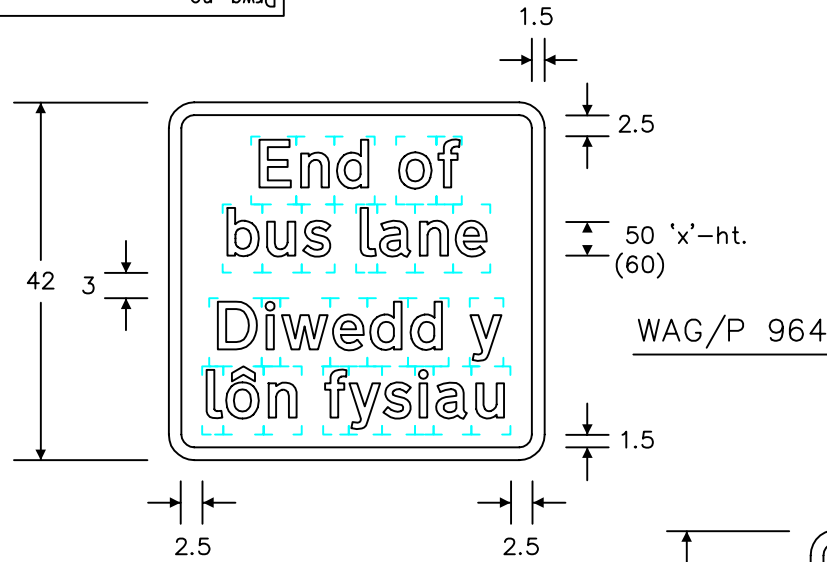


Notes:-

1. The legend is from the Transport Medium alphabet at the 'x'-heights shown.
2. Details of the bicycle symbol are given on drwg. S 24.
3. The outlines of the tiles do not form part of the sign.
4. The colours are as follows:-  
Legend, symbol and border \_\_\_\_\_ White  
Background \_\_\_\_\_ Blue
5. The 'x'-heights are given in millimetres, all other dimensions are given in stroke widths (i.e. 1s/w = 1/4 'x'-height).
6. The order of languages may be reversed if required.



REVISIONS	
1.	Dims. amended, nos. changed 23.8.96
2.	Legends on 964, 966 & notes amended 21.2.03
3.	Notes amended 21.3.07
Before using this drawing, confirm with RNM3 Division that it has not been superseded.	
Drn. A.T.I.	Appd.
Chkd.	Appl. date 3.10.75
Issue: 21.3.07	
Scale: Photo-reduced	
Title Bus and Cycle Signs	
END OF BUS LANE/ CYCLE ROUTE & CYCLISTS DISMOUNT	
WELSH ASSEMBLY GOVERNMENT	
Drwg. no. WAG/P 964, 965 & 966	