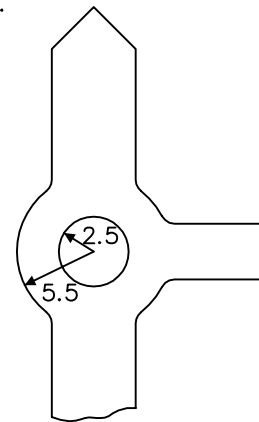


Notes: -

- The legends are from the Transport Heavy and Transport Medium alphabets at the 'x'-heights shown.
- The outlines of the tiles do not form part of the sign.
- The colours are as follows: -
 - Main Sign: -
 - Background _____ Green
 - Border & route symbol _____ White
 - Legend _____ White (Transport Medium)
 - Route numbers _____ Yellow (Transport Medium)
 - Non-primary route panel: -
 - Legend _____ Black (Transport Heavy)
 - Background _____ White
 - Primary route patch: -
 - Route number _____ Yellow (Transport Medium)
 - Background _____ Green
- The illumination of the sign must accord with the requirements of the current 'Traffic Signs Regulations and General Directions'.
- The 'x'-heights shown are given in millimetres, all other dimensions are given in stroke widths (i.e. 1s/w = 1/4'x'-height).
- The sign is designed in accordance with the current design rules.
- The order of languages may be reversed if required.

75 min 'x'-ht.
300 max



REVISIONS	
1. Redrawn & notes amended	15.8.00
2. Redrawn & notes amended	30.4.04
3. Notes amended	25.4.07
Before using this drawing, confirm with RNM3 Division that it has not been superseded.	
Drn. A.T.I.	Appd.
Chkd.	Appl. date 27.3.97
Issue: 25.4.07	
Scale: Photo-reduced	
Title	
Primary Route Directional Sign	
MINI-ROUNDBOULT WITH EXITS TO A	
PRIMARY ROUTE, LEADING TO A NON-	
PRIMARY ROUTE, AND A NON-PRIMARY	
ROUTE, LEADING TO ANOTHER PRIMARY ROUTE	
TO ANOTHER PRIMARY ROUTE	
WELSH ASSEMBLY GOVERNMENT	
Drwg. no.	WAG/P 2024