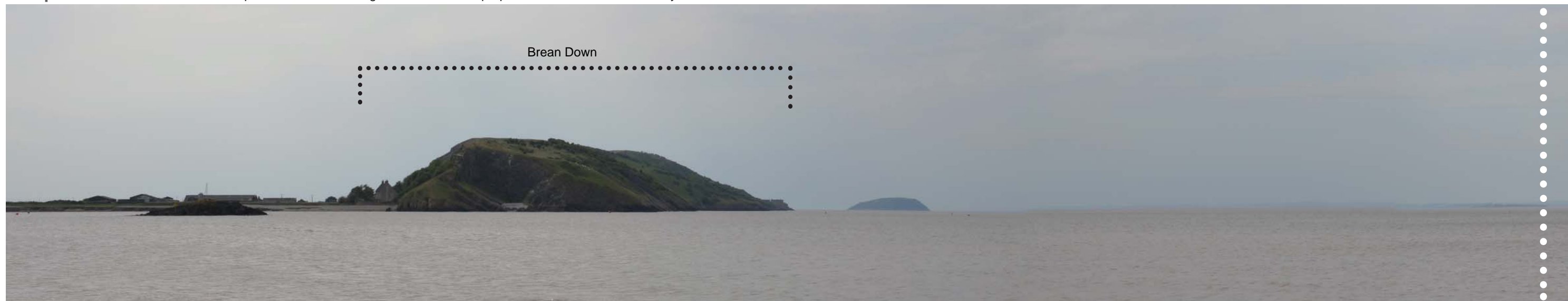


**Viewpoint 92:** View from Weston Super Mare beach looking north towards the proposed new section of motorway.



CUTLINE - SEE CONTINUATION

**Viewpoint 92:** Continued.



CUTLINE - SEE CONTINUATION

CUTLINE - SEE CONTINUATION

**Viewpoint 92:** Continued.



CUTLINE - SEE CONTINUATION

**Legend:**

◀.....▶ Indicative extents of proposed new section of motorway

Notes //

Site visits conducted for Summer Photos in June 2015 & Winter Photos in January 2016  
 All photographs taken using a digital SLR camera with a 35mm fixed focal lens. View height above ground approximately 1.65m  
 Photos captured on site have been subsequently merged and levels adjusted using computer software to form the panorama views.  
 Refer to Figure 9.9 for Representative Viewpoint Locations.  
 Refer to Appendix 9.7 for Assessment Table.



ENVIRONMENTAL STATEMENT SUPPLEMENT

New Section of Motorway  
 Summer Representative Viewpoints Photosheets  
 Sheet 30 of 67

Figure: R9.10	Revision: 1
Date: September 2016	Status: At Issue
Drawn: ERM	Checked: NJR
Scale: N/A	

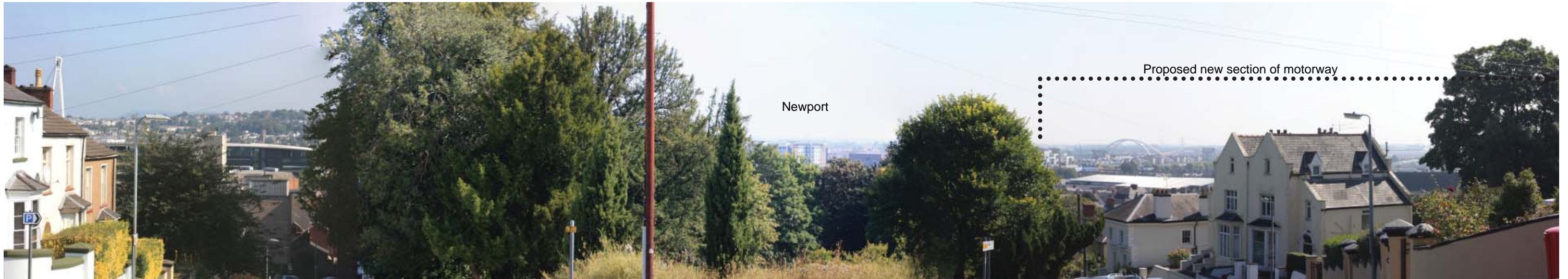
PRINT DOCUMENT ON A3 SIZE FORMAT

© Crown copyright and database right 2016. Ordnance Survey 100021874. Welsh Government.  
 © Hawlfraint a hawliau cronfa ddata'r Goron 2016. Rhif Trwydded yr Arolwg Ordnans 100021874.  
 dwg ref:

**Viewpoint 95:** View from Dewsland Park Road, Newport looking south-southeast.



**Viewpoint 96:** View from Park Square, Stow Hill looking east-southeast.



**Viewpoint 97:** View from Brean Down, Burnham-on-Sea, Somerset UK



**Legend:**

◀.....▶ Indicative extents of proposed new section of motorway

Notes //

Site visits conducted for Summer Photos in June 2015 & Winter Photos in January 2016  
 All photographs taken using a digital SLR camera with a 35mm fixed focal lens. View height above ground approximately 1.65m  
 Photos captured on site have been subsequently merged and levels adjusted using computer software to form the panorama views.  
 Refer to Figure 9.9 for Representative Viewpoint Locations.  
 Refer to Appendix 9.7 for Assessment Table.



ENVIRONMENTAL STATEMENT SUPPLEMENT  
 New Section of Motorway  
 Summer Representative Viewpoints Photosheets  
 Sheet 32 of 67

Figure: R9.10	Revision: 1
Date: September 2016	Status: At Issue
Drawn: ERM	Checked: NJR
Scale: N/A	
PRINT DOCUMENT ON A3 SIZE FORMAT	
© Crown copyright and database right 2016. Ordnance Survey 100021874. Welsh Government. © Hawlfraint a hawliau cronfa ddata'r Goron 2016. Rhif Trwydded yr Arolwg Ordnans 100021874.	
dwg ref:	

**Viewpoint 98:** View from Birkett Road/Kewstoke Road, Weston-super-Mare, UK



**Viewpoint 144b:** View from allotments situated on the B4245, Magor looking north northeast



**Legend:**

◄.....► Indicative extents of proposed new section of motorway

Notes //

Site visits conducted for Summer Photos in June 2015 & Winter Photos in January 2016  
 All photographs taken using a digital SLR camera with a 35mm fixed focal lens. View height above ground approximately 1.65m  
 Photos captured on site have been subsequently merged and levels adjusted using computer software to form the panorama views.  
 Refer to Figure 9.9 for Representative Viewpoint Locations.  
 Refer to Appendix 9.7 for Assessment Table.



ENVIRONMENTAL STATEMENT SUPPLEMENT

New Section of Motorway  
 Summer Representative Viewpoints Photosheets  
 Sheet 33 of 67

Figure: R9.10	Revision: 1
Date: September 2016	Status: At Issue
Drawn: ERM	Checked: NJR
Scale: N/A	

PRINT DOCUMENT ON A3 SIZE FORMAT

© Crown copyright and database right 2016. Ordnance Survey 100021874. Welsh Government.  
 © Hawlfraint a hawliau cronfa ddata'r Goron 2016. Rhif Trwydded yr Arolwg Ordnans 100021874.  
 dwg ref:

**Viewpoint A1:** View from B4325, junction of Lighthouse Rd with Duffryn Drive looking southeast.



**Viewpoint A4:** View from PRoW northwest of Parc Golf Course looking north.



**Viewpoint A5:** View from PRoW, Sirhowy Valley Walk, between the B4239 Lighthouse Road, and New Dairy Farm looking southeast



**Legend:**

◄.....► Indicative extents of proposed new section of motorway

**Notes //**

Site visits conducted for Summer Photos in June 2015 & Winter Photos in January 2016  
 All photographs taken using a digital SLR camera with a 35mm fixed focal lens. View height above ground approximately 1.65m  
 Photos captured on site have been subsequently merged and levels adjusted using computer software to form the panorama views.  
 Refer to Figure 9.9 for Representative Viewpoint Locations.  
 Refer to Appendix 9.7 for Assessment Table.



ENVIRONMENTAL STATEMENT SUPPLEMENT

New Section of Motorway  
 Winter Representative Viewpoints Photosheets  
 Sheet 66 of 67

Figure: R9.10 Revision: 1

Date: September 2016 Status: At Issue

Drawn: ERM Checked: NJR

Scale: N/A

PRINT DOCUMENT ON A3 SIZE FORMAT

© Crown copyright and database right 2016. Ordnance Survey 100021874. Welsh Government.  
 © Hawlfraint a hawliau cronfa ddata'r Goron 2016. Rhif Trwydded yr Arolwg Ordnans 100021874.

dwg ref:

**Viewpoint A6:** View from housing area in Newport, at Gaer, next to and to the southeast of Tredegar Camp looking southeast.



**Viewpoint A7:** View from Tatton Farm, on the track to the south of the farm looking south.



**Legend:**

◄.....► Indicative extents of proposed new section of motorway

Notes //

Site visits conducted for Summer Photos in June 2015 & Winter Photos in January 2016  
 All photographs taken using a digital SLR camera with a 35mm fixed focal lens. View height above ground approximately 1.65m  
 Photos captured on site have been subsequently merged and levels adjusted using computer software to form the panorama views.  
 Refer to Figure 9.9 for Representative Viewpoint Locations.  
 Refer to Appendix 9.7 for Assessment Table.



ENVIRONMENTAL STATEMENT SUPPLEMENT

New Section of Motorway  
 Winter Representative Viewpoints Photosheets  
 Sheet 67 of 67

Figure: R9.10 Revision: 1

Date: September 2016 Status: At Issue

Drawn: ERM Checked: NJR

Scale: N/A

PRINT DOCUMENT ON A3 SIZE FORMAT

© Crown copyright and database right 2016. Ordnance Survey 100021874. Welsh Government.  
 © Hawlfraint a hawliau cronfa ddata'r Goron 2016. Rhif Trwydded yr Arolwg Ordnans 100021874.  
 dwg ref: