

DO NOT SCALE

0 10 100  
Metres

LEGEND

SITE EXTENTS

- Essential Boundary Fenceline
- Highway Boundary Fenceline
- Easement Outside of Highways Boundary
- Temporary Works & Access for Construction & Borrow Pits

EXISTING VEGETATION RETAINED

- LE1.3 Species Rich Grassland
- LE2.1 Woodland & LE2.4 Linear Belt of Trees & Shrubs
- LE2.8 Scrub
- LE4.2 Hedgerow
- LE4.4 Hedgerow with Trees
- LE5.1 Individual Trees



LE6.1 Waterbodies & Associated Plants



LE6.2 Banks & Ditches & LE6.3 Reed Beds



LE6.4 Marsh & Wet Grassland



Newport TPO Designations

EXISTING VEGETATION TO BE REMOVED BETWEEN CASTLETON & USK

- LE1.3 Species Rich Grassland Area = 533,269m<sup>2</sup>
- LE2.1 Woodland & LE2.4 Linear Belt of Trees & Shrubs Area = 18,476m<sup>2</sup>
- LE2.8 Scrub Area = 335,139m<sup>2</sup>
- LE4.2 Hedgerow Length = 8,216m
- LE4.4 Hedgerow with Trees Length = 4,190m
- LE5.1 Individual Trees Area = 9,071m<sup>2</sup>



LE6.1 Waterbodies & Associated Plants Area = 3,038m<sup>2</sup>



LE6.2 Banks & Ditches & LE6.3 Reed Beds Length = 742m



LE6.4 Marsh & Wet Grassland Area = 585m<sup>2</sup>



Tree Protection Fencing



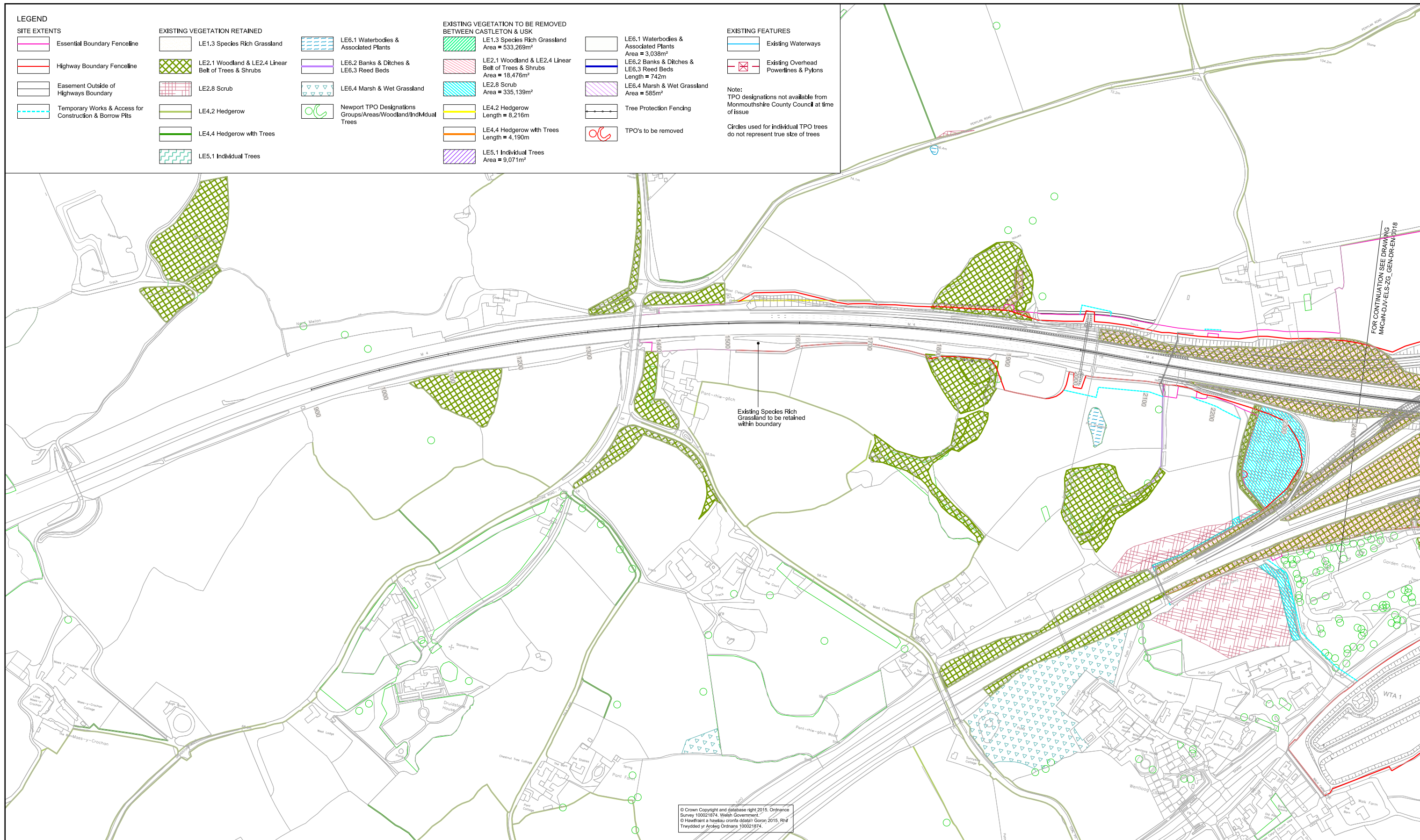
TPO's to be removed

EXISTING FEATURES

- Existing Waterways
- Existing Overhead Powerlines & Pylons

Note:  
TPO designations not available from Monmouthshire County Council at time of issue

Circles used for individual TPO trees do not represent true size of trees



Environmental Functions (EF):

- EFA Visual Screening
- EFB Landscape Integration
- EFC Enhancing the Built Environment
- EFD Nature Conservation and Biodiversity
- EFE Visual Amenity
- EFF Heritage
- EFG Auditory Amenity
- EFH Water Quality
- EFJ Agricultural Highway Boundary
- EFK Access

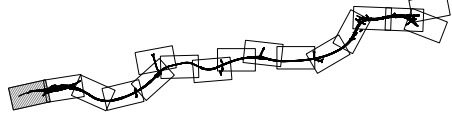
Landscape Elements (LE):

- LE 1.1 Amenity Grassland
- LE 1.3 Species Rich Grassland
- LE 1.4 Rock and Scree
- LE 1.6 Open Grassland
- LE 2.1 Woodland
- LE 2.4 Linear Belt of Shrubs and Trees
- LE 2.5 Shrubs with Intermittent Trees
- LE 2.6 Shrubs
- LE 3.1 Amenity Tree and Shrub Planting
- LE 3.2 Ornamental Shrubs
- LE 4.3 Native Species Hedgerows
- LE 4.4 Native Hedgerows with Trees
- LE 5.1 Individual Trees
- LE 6.3 Reed Beds
- LE 6.4 Marsh and Wet Grassland
- LE 7 Hard Landscape

Environmental Elements:

- E1 Auditory Amenity
- E1.1 Noise Reducing Surface
- E1.2 Noise Barrier-Built Elements
- E1.3 Noise Earthworks
- E2 Water Quality
- E2.1 Water Pollution Control Measures
- E3 Nature Conservation and Biodiversity
- E3.1 Protected Species
- E3.2 Ecological Protection Measures

KEY PLAN



GENERAL NOTES

- ALL DIMENSIONS ARE IN METRES UNLESS NOTED OTHERWISE.
- ONLY WRITTEN DIMENSIONS SHALL BE USED, DO NOT SCALE.
- DRAWINGS TO BE READ IN CONJUNCTION WITH LANDSCAPE ENVIRONMENTAL MASTERPLANS DRAWINGS 'M4CaN-DJV-ELS-ZG\_GEN\_DR\_EN\_0001-0016' AND GENERAL ARRANGEMENT DRAWINGS 'M4CaN-DJV-HGN-ZG\_GEN\_DR\_CH\_0001-0016'

© Crown Copyright and database right 2015, Ordnance Survey 100021874, Welsh Government.  
© Hwylfwrdd a hysbysu cronfa ddiwedd y Goron 2015, Rhif Trwydded yr Arrolwg Ordnans 100021874.

ISSUE	23/02/16	ENVIRONMENTAL STATEMENT ISSUE	ERM	NJR	PAI
ISSUE 2	24/08/16	SUPPLEMENTARY ISSUE	ERM	NJR	PAI
Rev.	Date	Description	By	Chk'd	App'd

Drawing Status	Subsidiary
Project Team	
Client	



M4 CORRIDOR AROUND NEWPORT

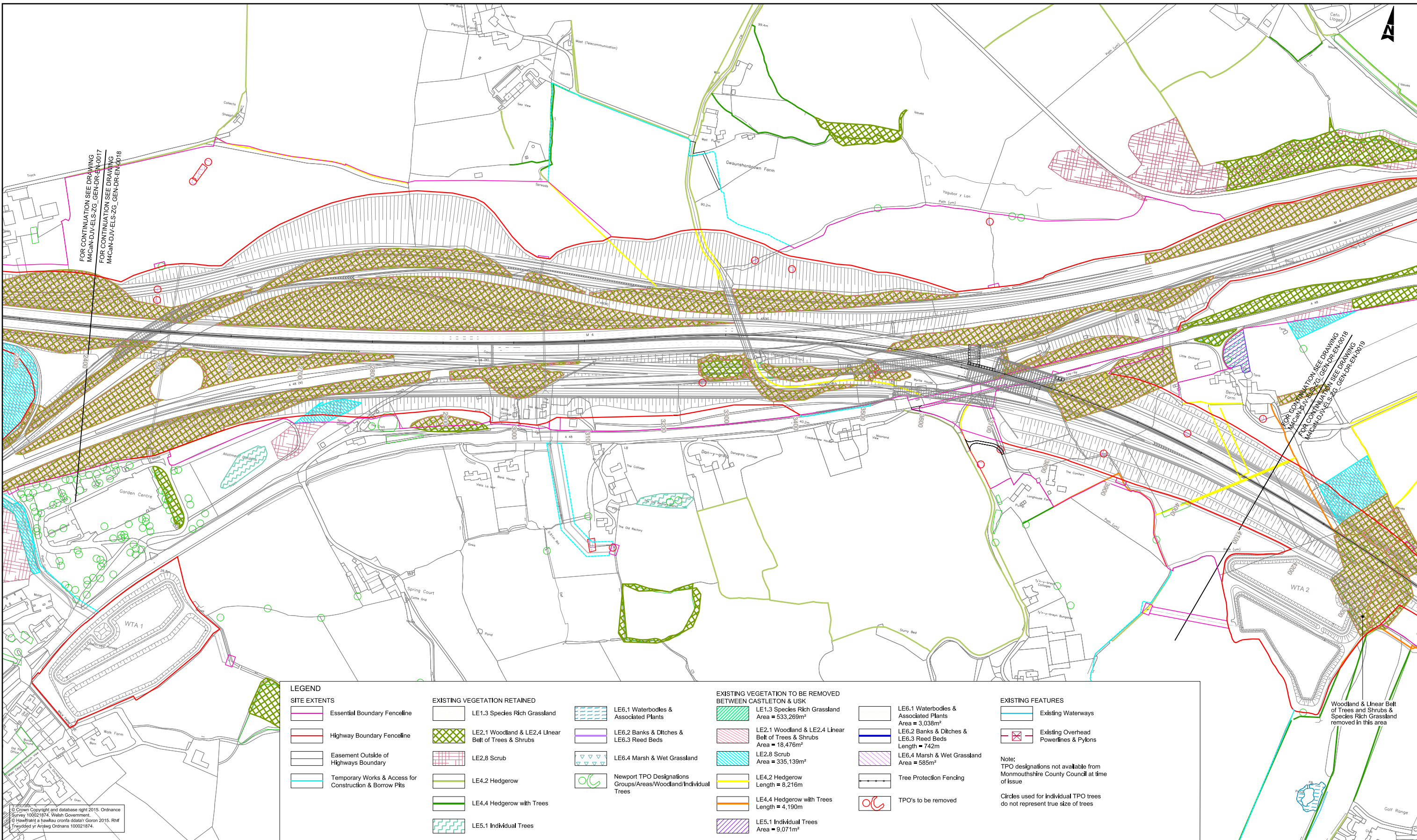
FIGURE R9.21  
EXISTING VEGETATION & CLEARANCE DRAWINGS  
SHEET 1 OF 16

Scale	1:2500	Designed / Drawn	Checked	Approved	Authorised
Original Size	A1	Date	Date	Date	Date
Drawing Number	Project	Originator	Volume	Revision	
M4CaN - DJV - ELS - ZG_GEN - DR - EN - 0017					ISSUE 2
Location	Type	Role	Number		



DO NOT SCALE

0 10 100  
Metres



© Crown Copyright and database right 2015. Ordnance Survey 100021874. Welsh Government.  
© Haulfenni a hawliau corffo ddolaf Gorn 2015. Rhf. Trwydded yr Arolwg Ordnans 100021874.

LEGEND

SITE EXTENTS

- Essential Boundary Fenceline
- Highway Boundary Fenceline
- Easement Outside of Highways Boundary
- Temporary Works & Access for Construction & Borrow Pits

EXISTING VEGETATION RETAINED

- LE1.3 Species Rich Grassland
- LE2.1 Woodland & LE2.4 Linear Belt of Trees & Shrubs
- LE2.8 Scrub
- LE4.2 Hedgerow
- LE4.4 Hedgerow with Trees
- LE5.1 Individual Trees

- LE6.1 Waterbodies & Associated Plants
- LE6.2 Banks & Ditches & LE6.3 Reed Beds
- LE6.4 Marsh & Wet Grassland
- Newport TPO Designations Groups/Areas/Woodland/Individual Trees

EXISTING VEGETATION TO BE REMOVED BETWEEN CASTLETON & USK

- LE1.3 Species Rich Grassland Area = 533,269m<sup>2</sup>
- LE2.1 Woodland & LE2.4 Linear Belt of Trees & Shrubs Area = 18,476m<sup>2</sup>
- LE2.8 Scrub Area = 335,139m<sup>2</sup>
- LE4.2 Hedgerow Length = 8,216m
- LE4.4 Hedgerow with Trees Length = 4,190m
- LE5.1 Individual Trees Area = 9,071m<sup>2</sup>

- LE6.1 Waterbodies & Associated Plants Area = 3,038m<sup>2</sup>
- LE6.2 Banks & Ditches & LE6.3 Reed Beds Length = 742m
- LE6.4 Marsh & Wet Grassland Area = 585m<sup>2</sup>
- Tree Protection Fencing
- TPO's to be removed

EXISTING FEATURES

- Existing Waterways
- Existing Overhead Powerlines & Pylons

Note:  
TPO designations not available from Monmouthshire County Council at time of issue  
Circles used for individual TPO trees do not represent true size of trees

Woodland & Linear Belt of Trees and Shrubs & Species Rich Grassland removed in this area

Environmental Functions (EF):

- EFA Visual Screening
- EFB Landscape Integration
- EFC Enhancing the Built Environment
- EFD Nature Conservation and Biodiversity
- EFE Visual Amenity
- EFF Heritage
- EFG Auditory Amenity
- EFH Water Quality
- EFJ Agricultural Highway Boundary
- EFK Access

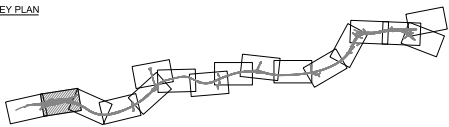
Landscape Elements (LE):

- LE 1.1 Amenity Grassland
- LE 1.3 Species Rich Grassland
- LE 1.4 Rock and Scree
- LE 1.6 Open Grassland
- LE 2.1 Woodland
- LE 2.4 Linear Belt of Shrubs and Trees
- LE 2.6 Shrubs
- LE 2.5 Shrubs with Intermittent Trees
- LE 3.1 Amenity Tree and Shrub Planting
- LE 3.2 Ornamental Shrubs
- LE 4.3 Native Species Hedgerows
- LE 4.4 Native Hedgerows with Trees
- LE 5.1 Individual Trees
- LE 6.3 Reed Beds
- LE 6.4 Marsh and Wet Grassland
- LE 7 Hard Landscape

Environmental Elements:

- E1 Auditory Amenity
- E1.1 Noise Reducing Surface
- E1.2 Noise Barrier-Built Elements
- E1.3 Noise Earthworks
- E2 Water Quality
- E2.1 Water Pollution Control Measures
- E3 Nature Conservation and Biodiversity
- E3.1 Protected Species
- E3.2 Ecological Protection Measures

KEY PLAN



GENERAL NOTES

- ALL DIMENSIONS ARE IN METRES UNLESS NOTED OTHERWISE.
- ONLY WRITTEN DIMENSIONS SHALL BE USED. DO NOT SCALE.
- DRAWINGS TO BE READ IN CONJUNCTION WITH LANDSCAPE ENVIRONMENTAL MASTERPLANS DRAWINGS 'M4CaN-DJV-ELS-ZG\_GEN\_DR\_EN\_0001-0016' AND GENERAL ARRANGEMENT DRAWINGS 'M4CaN-DJV-HGN-ZG\_GEN\_DR\_CH\_0001-0016'

Rev.	Date	Description	By	Chk'd	App'd
ISSUE	23/02/16	ENVIRONMENTAL STATEMENT ISSUE	ERM	NJR	PAI
ISSUE 2	24/08/16	SUPPLEMENTARY ISSUE	ERM	NJR	PAI

Drawing Status	Subtable
Project Team	
Client	

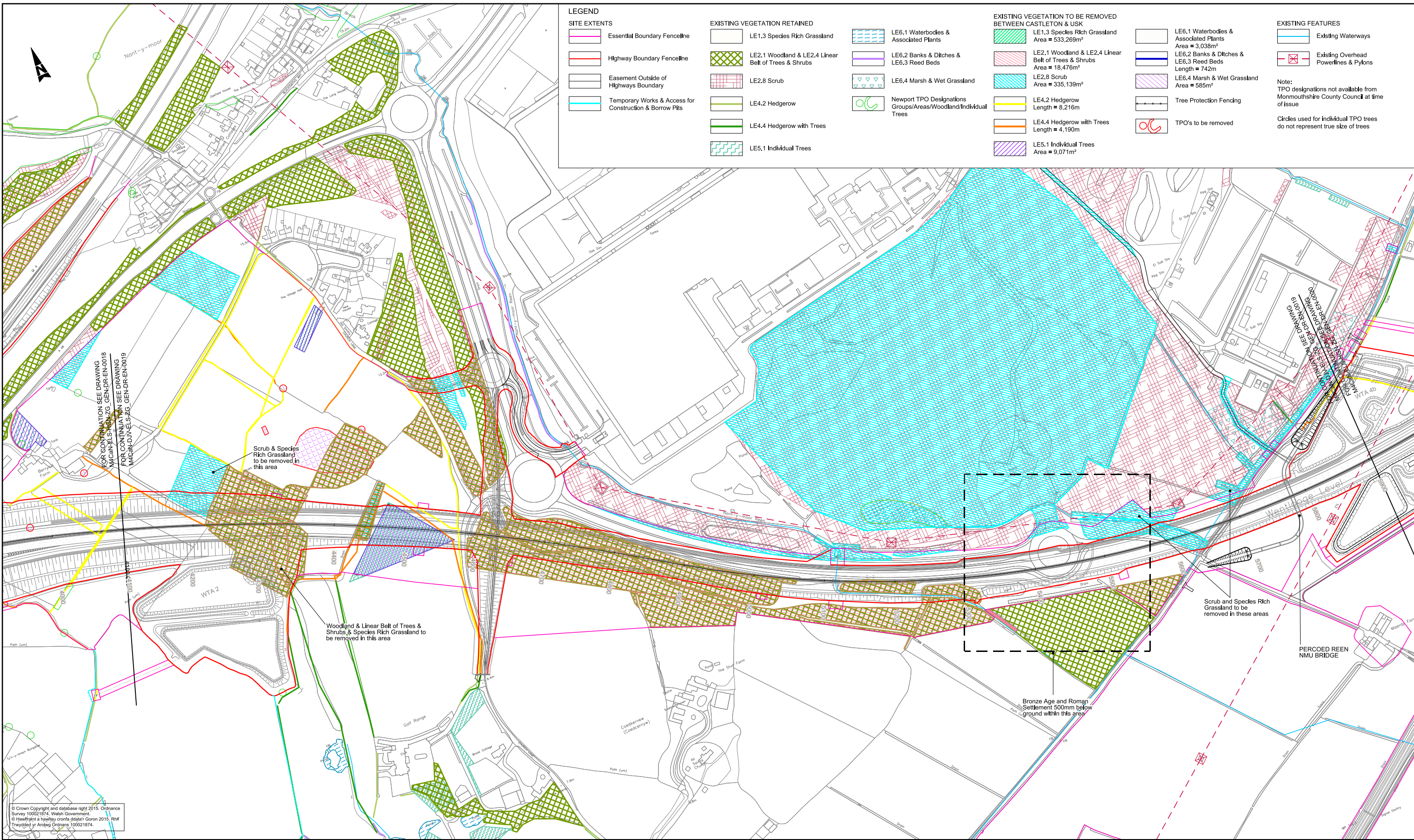


Project Title M4 CORRIDOR AROUND NEWPORT					
Drawing Title FIGURE R9.21 EXISTING VEGETATION & CLEARANCE DRAWINGS SHEET 2 OF 16					
Scale 1:2500	Designed / Drawn ERM	Checked NJR	Approved PAI	Authorised KEN	
Original Size A1	Date 23/08/16	Date 23/08/16	Date 24/08/16	Date 01/09/16	
Drawing Number Project	Originator M4CaN - DJV - ELS - ZG_GEN - DR - EN - 0018	Volume	Revision ISSUE 2		



DO NOT SCALE

100  
0 10  
Millimetres



**LEGEND**

**SITE EXTENTS**

- Essential Boundary Fenceline
- Highway Boundary Fenceline
- Easement Outside of Highways Boundary
- Temporary Works & Access for Construction & Borrow Pits

**EXISTING VEGETATION RETAINED**

- LE1.3 Species Rich Grassland
- LE2.1 Woodland & LE2.4 Linear Belt of Trees & Shrubs
- LE2.8 Scrub
- LE4.2 Hedgerow
- LE4.4 Hedgerow with Trees
- LE5.1 Individual Trees

**EXISTING VEGETATION TO BE REMOVED BETWEEN CASTLETON & USK**

- LE1.3 Species Rich Grassland Area = 533,269m<sup>2</sup>
- LE2.1 Woodland & LE2.4 Linear Belt of Trees & Shrubs Area = 18,476m<sup>2</sup>
- LE2.8 Scrub Area = 335,139m<sup>2</sup>
- LE4.2 Hedgerow Length = 8,216m
- LE4.4 Hedgerow with Trees Length = 4,190m
- LE5.1 Individual Trees Area = 9,071m<sup>2</sup>

**EXISTING FEATURES**

- Existing Waterways
- Existing Overhead Powerlines & Pylons

Note:  
TPO designations not available from Monmouthshire County Council at time of issue

Circles used for individual TPO trees do not represent true size of trees

**EXISTING VEGETATION TO BE REMOVED**

- LE6.1 Waterbodies & Associated Plants Area = 3,038m<sup>2</sup>
- LE6.2 Banks & Ditches & LE6.3 Reed Beds Length = 742m
- LE6.4 Marsh & Wet Grassland Area = 585m<sup>2</sup>
- Tree Protection Fencing
- TPO's to be removed

© Crown Copyright and database right 2015. Ordnance Survey 100021874. Welsh Government.  
© Hawlfraif a hysbysu cronfa ddiplun Goron 2015. Rhif Trwydded yr Arolwg Ordnance 100021874.

**Environmental Functions (EF):**

- EFA Visual Screening
- EFB Landscape Integration
- EFC Enhancing the Built Environment
- EFD Nature Conservation and Biodiversity
- EFE Visual Amenity
- EFF Heritage
- EFG Auditory Amenity
- EFH Water Quality
- EFJ Agricultural Highway Boundary
- EFK Access

**Landscape Elements (LE):**

- LE 1.1 Amenity Grassland
- LE 1.3 Species Rich Grassland
- LE 1.4 Rock and Scree
- LE 1.6 Open Grassland
- LE 2.1 Woodland
- LE 2.4 Linear Belt of Shrubs and Trees
- LE 2.5 Shrubs with Intermittent Trees
- LE 2.6 Shrubs
- LE 3.1 Amenity Tree and Shrub Planting
- LE 3.2 Ornamental Shrubs
- LE 4.3 Native Species Hedgerows
- LE 4.4 Native Hedgerows with Trees
- LE 5.1 Individual Trees
- LE 6.3 Reed Beds
- LE 6.4 Marsh and Wet Grassland
- LE 7 Hard Landscape

**Environmental Elements:**

- E1 Auditory Amenity
- E1.1 Noise Reducing Surface
- E1.2 Noise Barrier-Built Elements
- E1.3 Noise Earthworks
- E2 Water Quality
- E2.1 Water Pollution Control Measures
- E3 Nature Conservation and Biodiversity
- E3.1 Protected Species
- E3.2 Ecological Protection Measures

**KEY PLAN**

**GENERAL NOTES**

- ALL DIMENSIONS ARE IN METRES UNLESS NOTED OTHERWISE.
- ONLY WRITTEN DIMENSIONS SHALL BE USED, DO NOT SCALE.
- DRAWINGS TO BE READ IN CONJUNCTION WITH LANDSCAPE ENVIRONMENTAL MASTERPLANS DRAWINGS 'M4CaN-DJV-ELS-ZG\_GEN\_DR\_EN\_0001-0016' AND GENERAL ARRANGEMENT DRAWINGS 'M4CaN-DJV-HGN-ZG\_GEN\_DR\_CH\_0001-0016'

ISSUE	23/02/16	ENVIRONMENTAL STATEMENT ISSUE	ERM	NJR	PAI
ISSUE 2	24/08/16	SUPPLEMENTARY ISSUE	ERM	NJR	PAI
Rev.	Date	Description	By	Chk'd	App'd

Drawing Status

Subtality

Project Title

M4 CORRIDOR AROUND NEWPORT

Drawing Title

FIGURE R9.21  
EXISTING VEGETATION & CLEARANCE DRAWINGS  
SHEET 3 OF 16

Scale	1:2500	Designed / Drawn	ERM	Checked	NJR	Approved	PAI	Authorised	KEN
Original Size	A1	Date	23/08/16	Date	23/08/16	Date	24/08/16	Date	01/09/16

Drawing Number

Project

M4CaN - DJV - ELS - ZG\_GEN - DR - EN - 0019

Client

Llywodraeth Cymru  
Welsh Government

Issue 2



DO NOT SCALE

0 10 100  
Millimetres

LEGEND

SITE EXTENTS

- Essential Boundary Fenceline
- Highway Boundary Fenceline
- Easement Outside of Highways Boundary
- Temporary Works & Access for Construction & Borrow Pits

EXISTING VEGETATION RETAINED

- LE1.3 Species Rich Grassland
- LE2.1 Woodland & LE2.4 Linear Belt of Trees & Shrubs
- LE2.8 Scrub
- LE4.2 Hedgerow
- LE4.4 Hedgerow with Trees
- LE5.1 Individual Trees

- LE6.1 Waterbodies & Associated Plants
- LE6.2 Banks & Ditches & LE6.3 Reed Beds
- LE6.4 Marsh & Wet Grassland
- Newport TPO Designations Groups/Areas/Woodland/Individual Trees

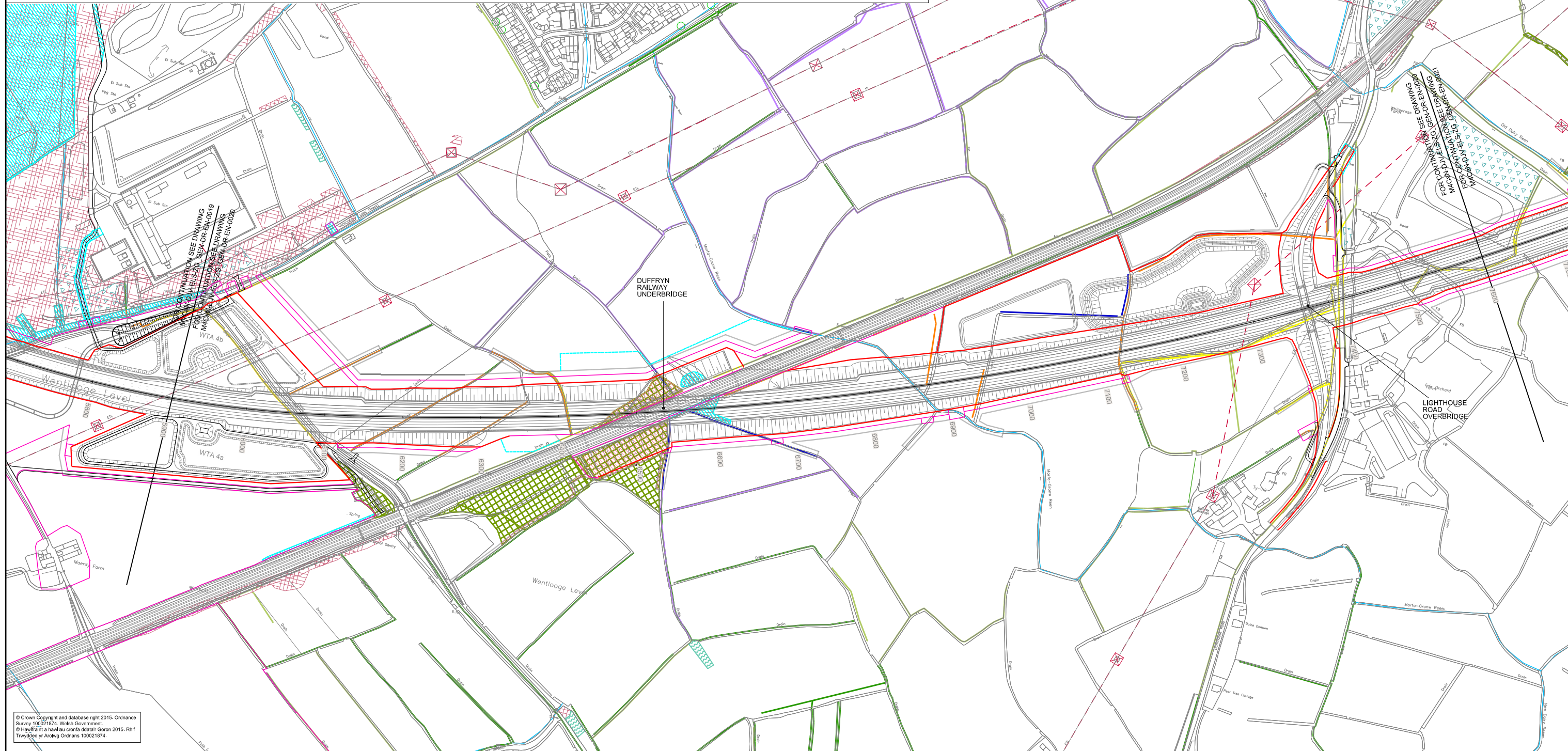
EXISTING VEGETATION TO BE REMOVED BETWEEN CASTLETON & USK

- LE1.3 Species Rich Grassland Area = 533,269m<sup>2</sup>
- LE2.1 Woodland & LE2.4 Linear Belt of Trees & Shrubs Area = 18,476m<sup>2</sup>
- LE2.8 Scrub Area = 335,139m<sup>2</sup>
- LE4.2 Hedgerow Length = 8,216m
- LE4.4 Hedgerow with Trees Length = 4,190m
- LE5.1 Individual Trees Area = 9,071m<sup>2</sup>

- LE6.1 Waterbodies & Associated Plants Area = 3,038m<sup>2</sup>
- LE6.2 Banks & Ditches & LE6.3 Reed Beds Length = 742m
- LE6.4 Marsh & Wet Grassland Area = 585m<sup>2</sup>
- Tree Protection Fencing
- TPO's to be removed

EXISTING FEATURES

- Existing Waterways
  - Existing Overhead Powerlines & Pylons
- Note:  
TPO designations not available from Monmouthshire County Council at time of issue
- Circles used for Individual TPO trees do not represent true size of trees



© Crown Copyright and database right 2015. Ordnance Survey 100021874. Welsh Government.  
© Hysgraffiadau a hysgraffiadau corfforol Goron 2015. Rhif Trwydded yr Arolwg Ordnans 100021874.

Environmental Functions (EF):

- EFA Visual Screening
- EFB Landscape Integration
- EFC Enhancing the Built Environment
- EFD Nature Conservation and Biodiversity
- EFE Visual Amenity
- EFF Heritage
- EFG Auditory Amenity
- EFH Water Quality
- EFJ Agricultural Highway Boundary
- EFK Access

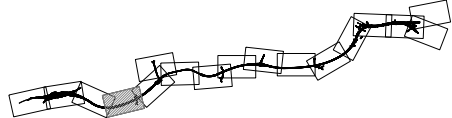
Landscape Elements (LE):

- LE 1.1 Amenity Grassland
- LE 1.3 Species Rich Grassland
- LE 1.4 Rock and Scree
- LE 1.6 Open Grassland
- LE 2.1 Woodland
- LE 2.4 Linear Belt of Shrubs and Trees
- LE 2.6 Shrubs
- LE 2.5 Shrubs with Intermittent Trees
- LE 3.1 Amenity Tree and Shrub Planting
- LE 3.2 Ornamental Shrubs
- LE 4.3 Native Species Hedgerows
- LE 4.4 Native Hedgerows with Trees
- LE 5.1 Individual Trees
- LE 6.3 Reed Beds
- LE 6.4 Marsh and Wet Grassland
- LE 7 Hard Landscape

Environmental Elements:

- E1 Auditory Amenity
- E1.1 Noise Reducing Surface
- E1.2 Noise Barrier-Built Elements
- E1.3 Noise Earthworks
- E2 Water Quality
- E2.1 Water Pollution Control Measures
- E3 Nature Conservation and Biodiversity
- E3.1 Protected Species
- E3.2 Ecological Protection Measures

KEY PLAN



GENERAL NOTES

- ALL DIMENSIONS ARE IN METRES UNLESS NOTED OTHERWISE.
- ONLY WRITTEN DIMENSIONS SHALL BE USED, DO NOT SCALE.
- DRAWINGS TO BE READ IN CONJUNCTION WITH LANDSCAPE ENVIRONMENTAL MASTERPLANS DRAWINGS 'M4CaN-DJV-ELS-ZG\_GEN\_DR\_EN\_0001-0016' AND GENERAL ARRANGEMENT DRAWINGS 'M4CaN-DJV-HGN-ZG\_GEN\_DR\_CH\_0001-0016'

Rev.	Date	Description	By	Chk'd	App'd
ISSUE	23/02/16	ENVIRONMENTAL STATEMENT ISSUE	ERM	NJR	PAI
ISSUE 2	24/08/16	SUPPLEMENTARY ISSUE	ERM	NJR	PAI

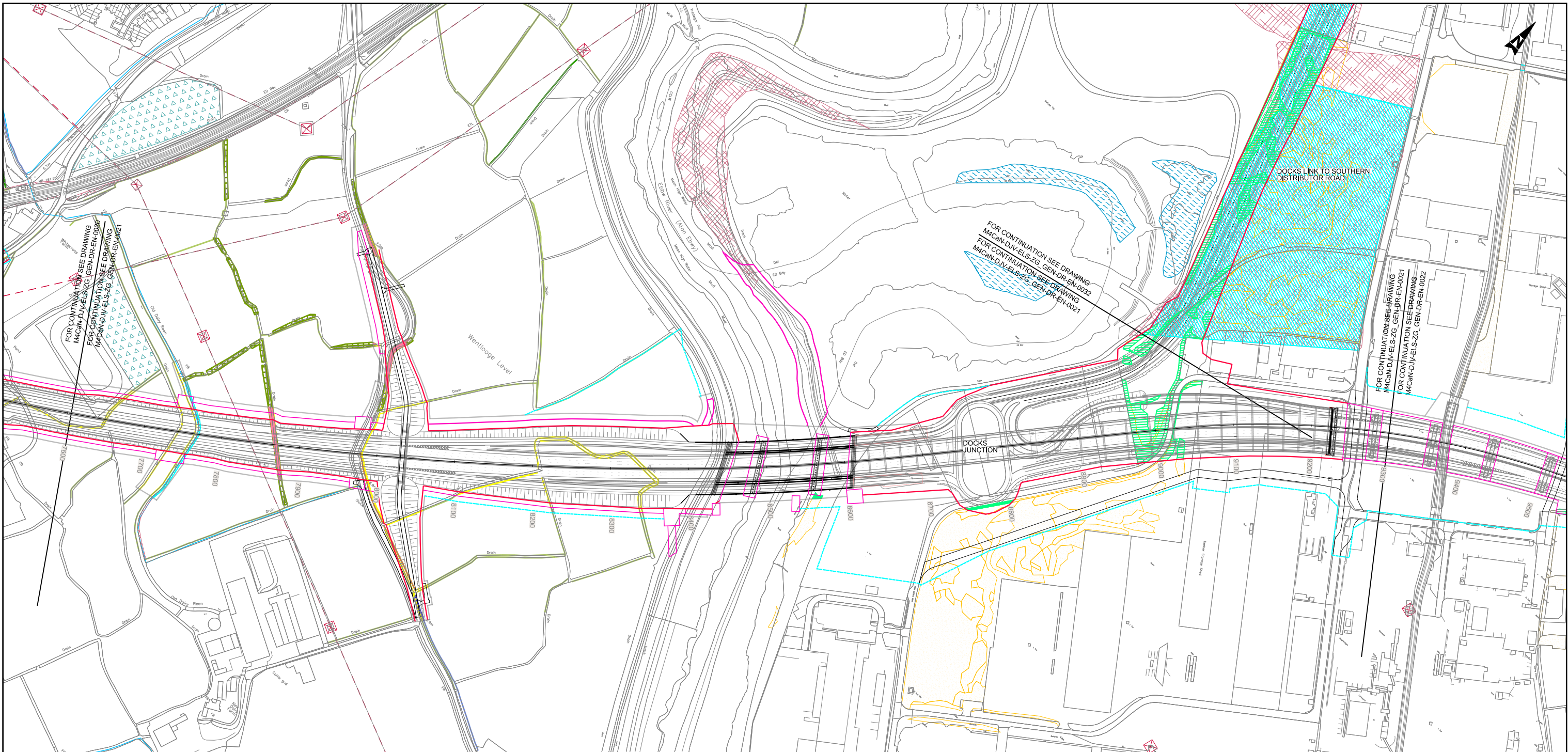
Drawing Status	Substability	Project Title
Project Team		M4 CORRIDOR AROUND NEWPORT
Client		



Drawing Title	FIGURE R9.21 EXISTING VEGETATION & CLEARANCE DRAWINGS SHEET 4 OF 16				
Scale	1:2500	Designed / Drawn	ERM	Checked	NJR
Original Size	A1	Date	23/08/16	Date	24/08/16
Drawing Number	Project	Originator	Volume	Revision	ISSUE 2
Location	Type	Role	Number		



0 10 100  
Metres



© Crown Copyright and database right 2015, Ordnance Survey 100021874, Welsh Government.  
© Hawffrist a hawlfraen cronfa ddata'r Goron 2015. Rhif Trwydded yr Arolwg Ordnans 100021874.

LEGEND

SITE EXTENTS

- Essential Boundary Fenceline
- Highway Boundary Fenceline
- Easement Outside of Highways Boundary
- Temporary Works & Access for Construction & Borrow Pits

EXISTING VEGETATION RETAINED

- LE1.3 Species Rich Grassland
- LE2.1 Woodland & LE2.4 Linear Belt of Trees & Shrubs
- LE2.8 Scrub
- LE4.2 Hedgerow
- LE4.4 Hedgerow with Trees
- LE5.1 Individual Trees

EXISTING VEGETATION TO BE REMOVED BETWEEN CASTLETON & USK

- LE1.3 Species Rich Grassland Area = 533,269m<sup>2</sup>
- LE2.1 Woodland & LE2.4 Linear Belt of Trees & Shrubs Area = 18,476m<sup>2</sup>
- LE2.8 Scrub Area = 335,139m<sup>2</sup>
- LE4.2 Hedgerow Length = 8,216m
- LE4.4 Hedgerow with Trees Length = 4,190m
- LE5.1 Individual Trees Area = 9,071m<sup>2</sup>

- LE6.1 Waterbodies & Associated Plants Area = 3,038m<sup>2</sup>
- LE6.2 Banks & Ditches & LE6.3 Reed Beds Length = 742m
- LE6.4 Marsh & Wet Grassland Area = 585m<sup>2</sup>
- Tree Protection Fencing
- TPO's to be removed

EXISTING FEATURES

- Existing Waterways
- Existing Overhead Powerlines & Pylons

Note:  
TPO designations not available from Monmouthshire County Council at time of issue

Circles used for individual TPO trees do not represent true size of trees

Environmental Functions (EF):

- EFA Visual Screening
- EFB Landscape Integration
- EFC Enhancing the Built Environment
- EFD Nature Conservation and Biodiversity
- EFE Visual Amenity
- EFF Heritage
- EFG Auditory Amenity
- EFH Water Quality
- EFJ Agricultural Highway Boundary
- EFK Access

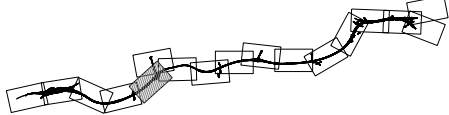
Landscape Elements (LE):

- LE 1.1 Amenity Grassland
- LE 1.3 Species Rich Grassland
- LE 1.4 Rock and Scree
- LE 1.6 Open Grassland
- LE 2.1 Woodland
- LE 2.4 Linear Belt of Shrubs and Trees
- LE 2.5 Shrubs with Intermittent Trees
- LE 2.6 Shrubs
- LE 3.1 Amenity Tree and Shrub Planting
- LE 3.2 Ornamental Shrubs
- LE 4.3 Native Species Hedgerows
- LE 4.4 Native Hedgerows with Trees
- LE 5.1 Individual Trees
- LE 6.3 Reed Beds
- LE 6.4 Marsh and Wet Grassland
- LE 7 Hard Landscape

Environmental Elements:

- E1 Auditory Amenity
- E1.1 Noise Reducing Surface
- E1.2 Noise Barrier-Built Elements
- E1.3 Noise Earthworks
- E2 Water Quality
- E2.1 Water Pollution Control Measures
- E3 Nature Conservation and Biodiversity
- E3.1 Protected Species
- E3.2 Ecological Protection Measures

KEY PLAN



GENERAL NOTES

1. ALL DIMENSIONS ARE IN METRES UNLESS NOTED OTHERWISE.
2. ONLY WRITTEN DIMENSIONS SHALL BE USED, DO NOT SCALE.
3. DRAWINGS TO BE READ IN CONJUNCTION WITH LANDSCAPE ENVIRONMENTAL MASTERPLANS DRAWINGS 'M4CaN-DJV-ELS-ZG\_GEN-DR-EN\_0001-0016' AND GENERAL ARRANGEMENT DRAWINGS 'M4CaN-DJV-HGN-ZG\_GEN-DR\_CH\_0001-0016'

ISSUE	Date	Description	By	Chk'd	App'd
ISSUE 1	23/02/16	ENVIRONMENTAL STATEMENT ISSUE	ERM	NJR	PAI
ISSUE 2	24/08/16	SUPPLEMENTARY ISSUE	ERM	NJR	PAI
Rev.	Date	Description	By	Chk'd	App'd

Drawing Status	Suitability
Project Team	Project Title
Client	Drawing Title



M4 CORRIDOR AROUND NEWPORT					
FIGURE R9.21 EXISTING VEGETATION & CLEARANCE DRAWINGS SHEET 5 OF 16					
Scale	Designed / Drawn	Checked	Approved	Authorised	
1:2500	ERM	NJR	PAI	KEN	
Original Size	Date	Date	Date	Date	
A1	23/08/16	23/08/16	24/08/16	01/09/16	
Drawing Number	Project	Originator	Volume	Revision	
M4CaN - DJV - ELS - ZG_GEN - DR - EN - 0021		M4CaN - DJV - ELS - ZG_GEN - DR - EN - 0021		ISSUE 2	
Location	Type	Role	Number		

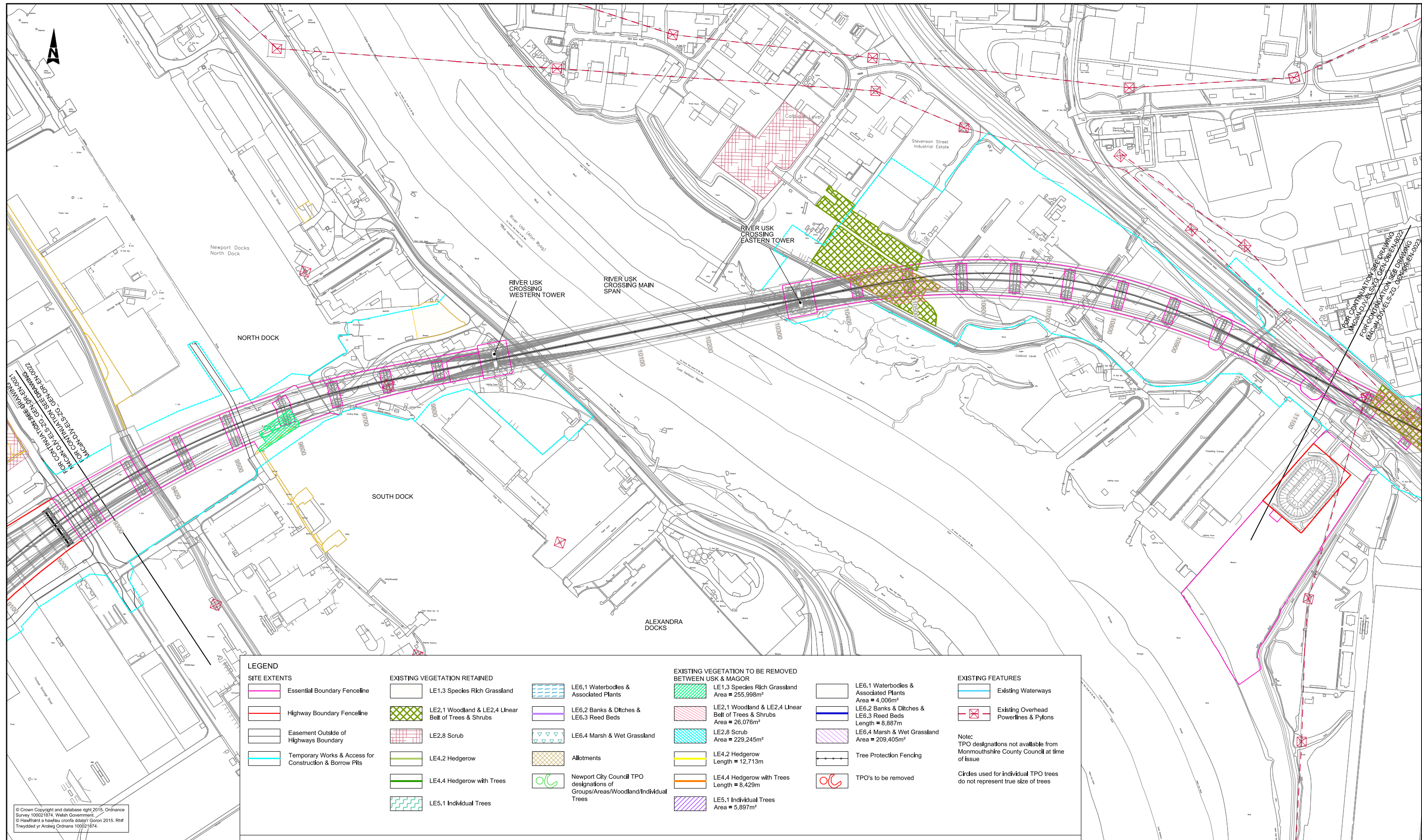


DO NOT SCALE

Millimetres

0 10

100



#### LEGEND

##### SITE EXTENTS

- Essential Boundary Fenceline
- Highway Boundary Fenceline
- Easement Outside of Highways Boundary
- Temporary Works & Access for Construction & Borrow Pits

##### EXISTING VEGETATION RETAINED

- LE1.3 Species Rich Grassland
- LE2.1 Woodland & LE2.4 Linear Belt of Trees & Shrubs
- LE2.8 Scrub
- LE4.2 Hedgerow
- LE4.4 Hedgerow with Trees
- LE5.1 Individual Trees

- LE6.1 Waterbodies & Associated Plants
- LE6.2 Banks & Ditches & LE6.3 Reed Beds
- LE6.4 Marsh & Wet Grassland
- Allotments
- Newport City Council TPO designations of Groups/Areas/Woodland/Individual Trees

##### EXISTING VEGETATION TO BE REMOVED BETWEEN USK & MAGOR

- LE1.3 Species Rich Grassland Area = 255,998m<sup>2</sup>
- LE2.1 Woodland & LE2.4 Linear Belt of Trees & Shrubs Area = 26,076m<sup>2</sup>
- LE2.8 Scrub Area = 229,245m<sup>2</sup>
- LE4.2 Hedgerow Length = 12,713m
- LE4.4 Hedgerow with Trees Length = 8,429m
- LE5.1 Individual Trees Area = 5,897m<sup>2</sup>

- LE6.1 Waterbodies & Associated Plants Area = 4,006m<sup>2</sup>
- LE6.2 Banks & Ditches & LE6.3 Reed Beds Length = 8,887m
- LE6.4 Marsh & Wet Grassland Area = 209,405m<sup>2</sup>
- Tree Protection Fencing
- TPO's to be removed

##### EXISTING FEATURES

- Existing Waterways
- Existing Overhead Powerlines & Pylons

Note:  
TPO designations not available from Monmouthshire County Council at time of issue

Circles used for individual TPO trees do not represent true size of trees

© Crown Copyright and database right 2015. Ordnance Survey 100021874. Welsh Government.  
© Hafwrant a hawlfraen corff ddiogel Guron 2015. Rhf Trwydded yr Arolwg Ordnans 100021874.

#### Environmental Functions (EF):

- EFA Visual Screening
- EFB Landscape Integration
- EFC Enhancing the Built Environment
- EFD Nature Conservation and Biodiversity
- EFE Visual Amenity
- EFF Heritage
- EFG Auditory Amenity
- EFH Water Quality
- EFJ Agricultural Highway Boundary
- EFK Access

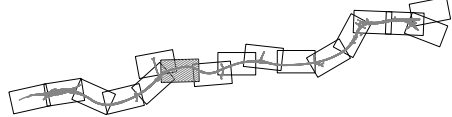
#### Landscape Elements (LE):

- LE 1.1 Amenity Grassland
- LE 1.3 Species Rich Grassland
- LE 1.4 Rock and Scree
- LE 1.6 Open Grassland
- LE 2.1 Woodland
- LE 2.4 Linear Belt of Trees and Shrubs
- LE 2.5 Shrubs with Intermittent Trees
- LE 2.6 Shrubs
- LE 3.1 Amenity Tree and Shrub Planting
- LE 3.2 Ornamental Shrubs
- LE 4.3 Native Species Hedgerows
- LE 4.4 Native Hedgerows with Trees
- LE 5.1 Individual Trees
- LE 6.3 Reed Beds
- LE 6.4 Marsh and Wet Grassland
- LE 7 Hard Landscape

#### Environmental Elements:

- E1 Auditory Amenity
- E1.1 Noise Reducing Surface
- E1.2 Noise Barrier-Built Elements
- E1.3 Noise Earthworks
- E2 Water Quality
- E2.1 Water Pollution Control Measures
- E3 Nature Conservation and Biodiversity
- E3.1 Protected Species
- E3.2 Ecological Protection Measures


#### KEY PLAN



#### GENERAL NOTES

- ALL DIMENSIONS ARE IN METRES UNLESS NOTED OTHERWISE.
- ONLY WRITTEN DIMENSIONS SHALL BE USED, DO NOT SCALE.
- DRAWINGS TO BE READ IN CONJUNCTION WITH LANDSCAPE ENVIRONMENTAL MASTERPLANS DRAWINGS 'M4CaN-DJV-ELS-ZG\_GEN\_DR\_EN\_0001-0016' AND GENERAL ARRANGEMENT DRAWINGS 'M4CaN-DJV-HGN-ZG\_GEN\_DR\_CH\_0001-0016'

Rev.	Date	Description	By	Chk'd	App'd
ISSUE	23/02/16	ENVIRONMENTAL STATEMENT ISSUE	ERM	NJR	PAI
ISSUE 2	24/08/16	SUPPLEMENTARY ISSUE	ERM	NJR	PAI

Drawing Status		Suitability		Project Title M4 CORRIDOR AROUND NEWPORT									
Project Team				Drawing Title  FIGURE R9.21 EXISTING VEGETATION & CLEARANCE DRAWINGS SHEET 6 OF 16									
				Scale 1:2500		Designed / Drawn ERM		Checked NJR		Approved PAI		Authorised KEN	
				Original Size A1		Date 23/08/16		Date 23/08/16		Date 24/08/16		Date 01/09/16	
Client    Llywodraeth Cymru Welsh Government				Drawing Number Project		Originator		Volume		Revision			
				M4CaN - DJV - ELS - ZG_GEN - DR - EN - 0022						ISSUE 2			
				Location		Type		Role		Number			



Llywodraeth Cymru  
Welsh Government







DO NOT SCALE

0 10 100  
Metres

LEGEND

SITE EXTENTS

- Essential Boundary Fenceline
- Highway Boundary Fenceline
- Easement Outside of Highways Boundary
- Temporary Works & Access for Construction & Borrow Pits

EXISTING VEGETATION RETAINED

- LE1.3 Species Rich Grassland
- LE2.1 Woodland & LE2.4 Linear Belt of Trees & Shrubs
- LE2.8 Scrub
- LE4.2 Hedgerow
- LE4.4 Hedgerow with Trees
- LE5.1 Individual Trees
- LE6.1 Waterbodies & Associated Plants
- LE6.2 Banks & Ditches & LE6.3 Reed Beds
- LE6.4 Marsh & Wet Grassland
- Allotments
- Newport City Council TPO designations of Groups/Areas/Woodland/Individual Trees

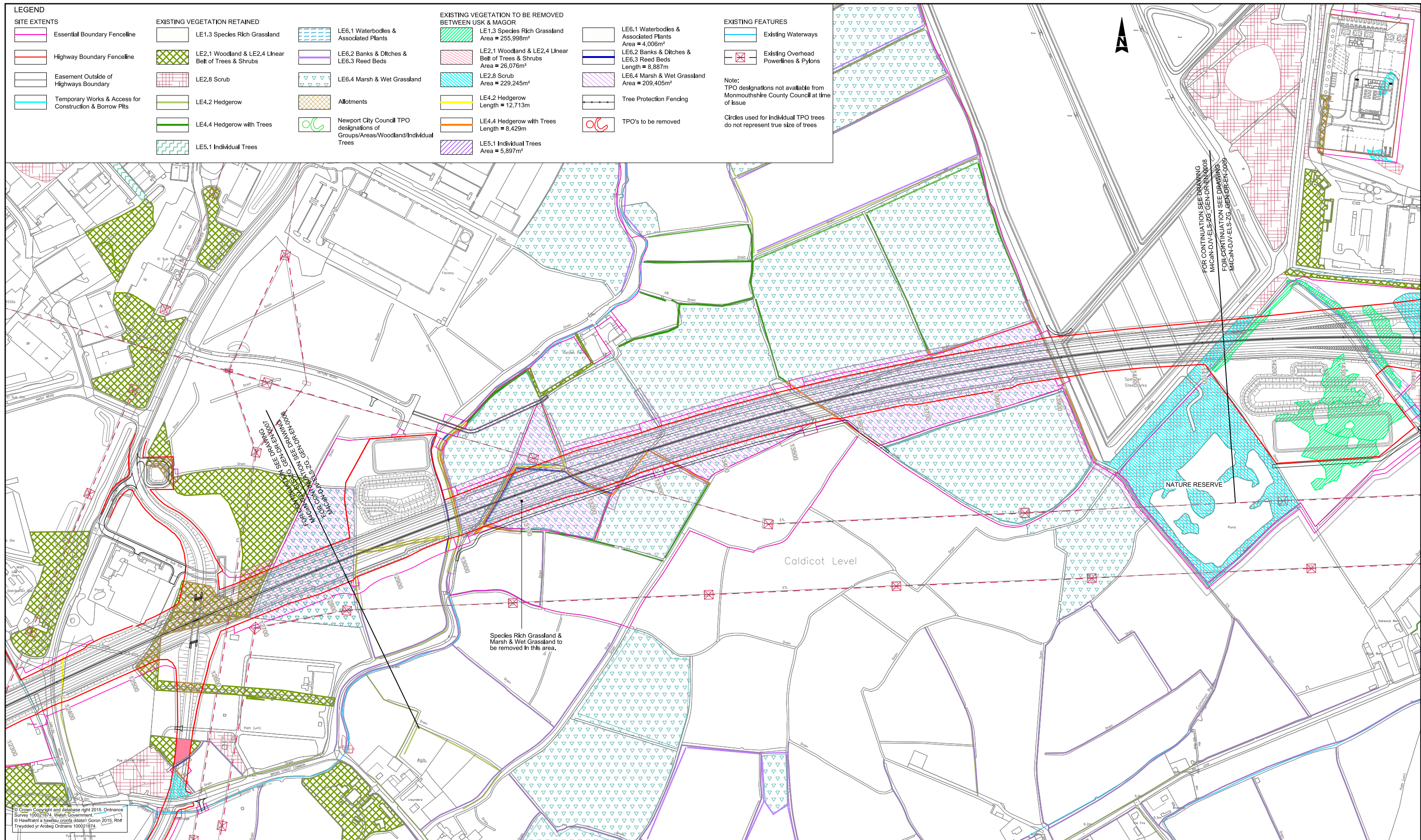
EXISTING VEGETATION TO BE REMOVED BETWEEN USK & MAGOR

- LE1.3 Species Rich Grassland Area = 255,998m<sup>2</sup>
- LE2.1 Woodland & LE2.4 Linear Belt of Trees & Shrubs Area = 26,076m<sup>2</sup>
- LE2.8 Scrub Area = 229,245m<sup>2</sup>
- LE4.2 Hedgerow Length = 12,713m
- LE4.4 Hedgerow with Trees Length = 8,429m
- LE5.1 Individual Trees Area = 5,897m<sup>2</sup>

- LE6.1 Waterbodies & Associated Plants Area = 4,006m<sup>2</sup>
- LE6.2 Banks & Ditches & LE6.3 Reed Beds Length = 8,887m
- LE6.4 Marsh & Wet Grassland Area = 209,405m<sup>2</sup>
- Tree Protection Fencing
- TPO's to be removed

EXISTING FEATURES

- Existing Waterways
- Existing Overhead Powerlines & Pylons
- Note: TPO designations not available from Monmouthshire County Council at time of issue
- Circles used for individual TPO trees do not represent true size of trees



© Crown Copyright and database right 2015. Ordnance Survey 100021874. Welsh Government.  
© Hafwrdd a hantiau cwrta ddiolaf Goron 2015. Rhif Trwydded yr Arolwg Ordnans 100021874.

Environmental Functions (EF):

- EFA Visual Screening
- EFB Landscape Integration
- EFC Enhancing the Built Environment
- EFD Nature Conservation and Biodiversity
- EFE Visual Amenity
- EFF Heritage
- EFG Auditory Amenity
- EFH Water Quality
- EFJ Agricultural Highway Boundary
- EFK Access

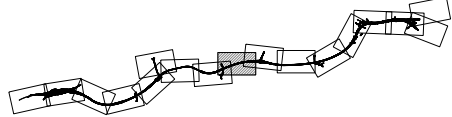
Landscape Elements (LE):

- LE 1.1 Amenity Grassland
- LE 1.3 Species Rich Grassland
- LE 1.4 Rock and Scree
- LE 1.6 Open Grassland
- LE 2.1 Woodland
- LE 2.4 Linear Belt of Shrubs and Trees
- LE 2.5 Shrubs with Intermittent Trees
- LE 2.6 Shrubs
- LE 3.1 Amenity Tree and Shrub Planting
- LE 3.2 Ornamental Shrubs
- LE 4.3 Native Species Hedgerows
- LE 4.4 Native Hedgerows with Trees
- LE 5.1 Individual Trees
- LE 6.2 Reed Beds
- LE 6.4 Marsh and Wet Grassland
- LE 7 Hard Landscape

Environmental Elements:

- E1 Auditory Amenity
- E1.1 Noise Reducing Surface
- E1.2 Noise Barrier-Built Elements
- E1.3 Noise Earthworks
- E2 Water Quality
- E2.1 Water Pollution Control Measures
- E3 Nature Conservation and Biodiversity
- E3.1 Protected Species
- E3.2 Ecological Protection Measures


KEY PLAN



GENERAL NOTES

- ALL DIMENSIONS ARE IN METRES UNLESS NOTED OTHERWISE.
- ONLY WRITTEN DIMENSIONS SHALL BE USED, DO NOT SCALE.
- DRAWINGS TO BE READ IN CONJUNCTION WITH LANDSCAPE ENVIRONMENTAL MASTERPLANS DRAWINGS 'M4CaN-DJV-ELS-ZG\_GEN\_EN\_0001-0016' AND GENERAL ARRANGEMENT DRAWINGS 'M4CaN-DJV-HGN-ZG\_GEN\_DR\_CH\_0001-0016'

Rev.	Date	Description	By	Chk'd	App'd
ISSUE	23/02/16	ENVIRONMENTAL STATEMENT ISSUE	ERM	NJR	PAI
ISSUE 2	24/08/16	SUPPLEMENTARY ISSUE	ERM	NJR	PAI

Drawing Status		Suitability		Project Title M4 CORRIDOR AROUND NEWPORT									
Project Team				Drawing Title FIGURE R9.21 EXISTING VEGETATION & CLEARANCE DRAWINGS SHEET 8 OF 16									
				Scale 1:2500		Designed / Drawn ERM		Checked NJR		Approved PAI		Authorised KEN	
<div> Llywodraeth Cymru Welsh Government</div>				Original Size A1		Date 23/08/16		Date 23/08/16		Date 24/08/16		Date 01/09/16	
				Drawing Number Project		Originator M4CaN - DJV - ELS - ZG_GEN - DR - EN - 0024				Volume		Revision	
				Location		Type		Role		Number		ISSUE 2	





DO NOT SCALE

Millimetres

0 10 100

LEGEND

SITE EXTENTS

- Essential Boundary Fenceline
- Highway Boundary Fenceline
- Easement Outside of Highways Boundary
- Temporary Works & Access for Construction & Borrow Pits

EXISTING VEGETATION RETAINED

- LE1.3 Species Rich Grassland
- LE2.1 Woodland & LE2.4 Linear Belt of Trees & Shrubs
- LE2.8 Scrub
- LE4.2 Hedgerow
- LE4.4 Hedgerow with Trees
- LE5.1 Individual Trees

- LE6.1 Waterbodies & Associated Plants
- LE6.2 Banks & Ditches & LE6.3 Reed Beds
- LE6.4 Marsh & Wet Grassland
- Allotments
- Newport City Council TPO designations of Groups/Areas/Woodland/Individual Trees

EXISTING VEGETATION TO BE REMOVED BETWEEN USK & MAGOR

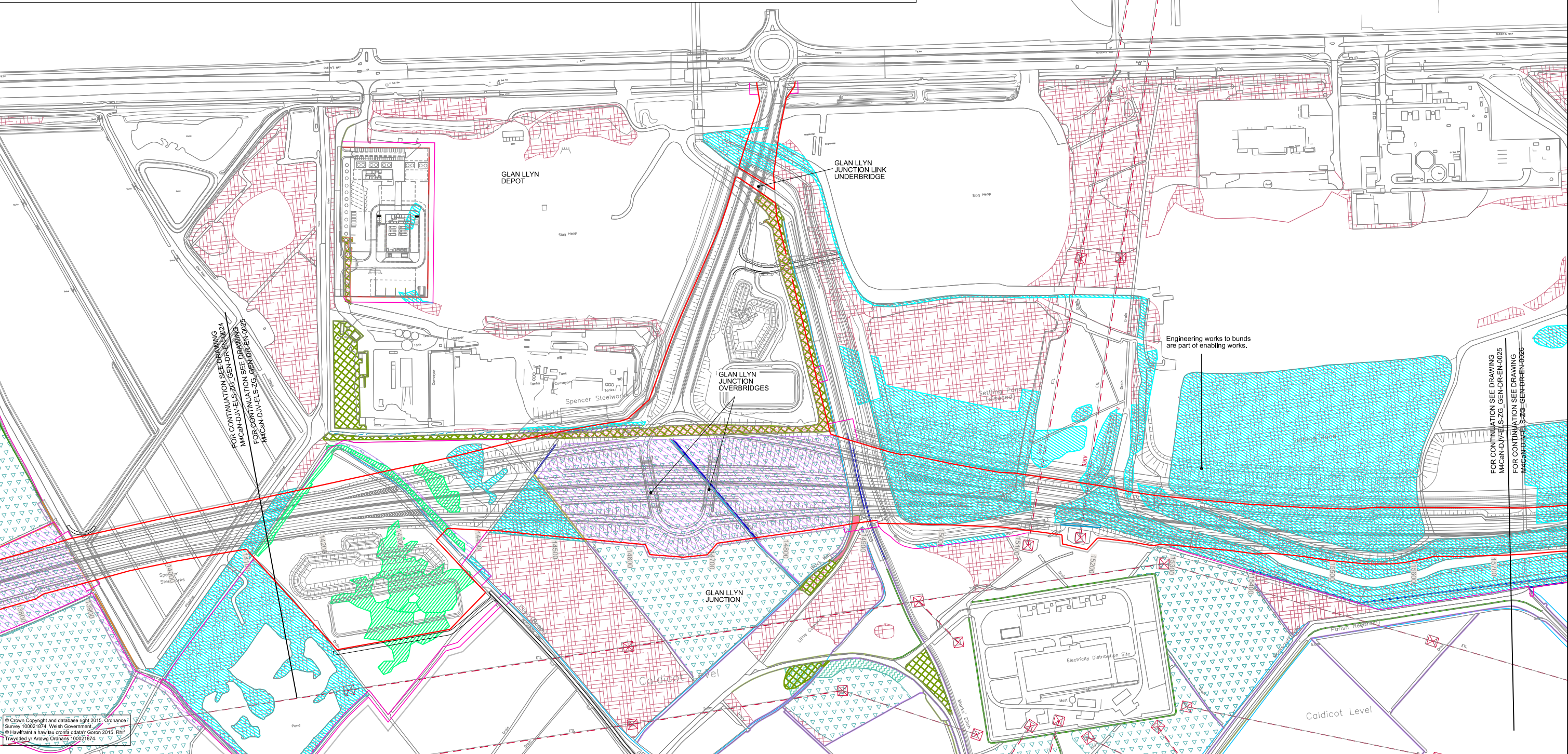
- LE1.3 Species Rich Grassland Area = 255,998m<sup>2</sup>
- LE2.1 Woodland & LE2.4 Linear Belt of Trees & Shrubs Area = 26,076m<sup>2</sup>
- LE2.8 Scrub Area = 229,245m<sup>2</sup>
- LE4.2 Hedgerow Length = 12,713m
- LE4.4 Hedgerow with Trees Length = 8,429m
- LE5.1 Individual Trees Area = 5,897m<sup>2</sup>

- LE6.1 Waterbodies & Associated Plants Area = 4,006m<sup>2</sup>
- LE6.2 Banks & Ditches & LE6.3 Reed Beds Length = 8,887m
- LE6.4 Marsh & Wet Grassland Area = 209,405m<sup>2</sup>
- Tree Protection Fencing
- TPO's to be removed

EXISTING FEATURES

- Existing Waterways
- Existing Overhead Powerlines & Pylons

Note:  
TPO designations not available from Monmouthshire County Council at time of issue  
Circles used for individual TPO trees do not represent true size of trees



<p><b>Environmental Functions (EF):</b></p> <ul style="list-style-type: none"><li>EFA Visual Screening</li><li>EFB Landscape Integration</li><li>EFC Enhancing the Built Environment</li><li>EFD Nature Conservation and Biodiversity</li><li>EFE Visual Amenity</li><li>EFF Heritage</li><li>EFG Auditory Amenity</li><li>EFH Water Quality</li><li>EFJ Agricultural Highway Boundary</li><li>EFK Access</li></ul>			<p><b>Landscape Elements (LE):</b></p> <ul style="list-style-type: none"><li>LE 1.1 Amenity Grassland</li><li>LE 1.3 Species Rich Grassland</li><li>LE 1.4 Rock and Scree</li><li>LE 1.6 Open Grassland</li><li>LE 2.1 Woodland</li><li>LE 2.4 Linear Belt of Shrubs and Trees</li><li>LE 2.5 Shrubs with Intermittent Trees</li><li>LE 2.6 Shrubs</li><li>LE 3.1 Amenity Tree and Shrub Planting</li><li>LE 3.2 Ornamental Shrubs</li><li>LE 4.3 Native Species Hedgerows</li><li>LE 4.4 Native Hedgerows with Trees</li><li>LE 5.1 Individual Trees</li><li>LE 6.3 Reed Beds</li><li>LE 6.4 Marsh and Wet Grassland</li><li>LE 7 Hard Landscape</li></ul>			<p><b>Environmental Elements:</b></p> <ul style="list-style-type: none"><li>E1 Auditory Amenity</li><li>E1.1 Noise Reducing Surface</li><li>E1.2 Noise Barrier-Built Elements</li><li>E1.3 Noise Earthworks</li><li>E2 Water Quality</li><li>E2.1 Water Pollution Control Measures</li><li>E3 Nature Conservation and Biodiversity</li><li>E3.1 Protected Species</li><li>E3.2 Ecological Protection Measures</li></ul>			<p><b>KEY PLAN</b></p>			<p><b>GENERAL NOTES</b></p> <ol style="list-style-type: none"><li>ALL DIMENSIONS ARE IN METRES UNLESS NOTED OTHERWISE.</li><li>ONLY WRITTEN DIMENSIONS SHALL BE USED, DO NOT SCALE.</li><li>DRAWINGS TO BE READ IN CONJUNCTION WITH LANDSCAPE ENVIRONMENTAL MASTERPLANS DRAWINGS 'M4CaN-DJV-ELS-ZG_GEN_DR_EN_0001-0016' AND GENERAL ARRANGEMENT DRAWINGS 'M4CaN-DJV-HGN-ZG_GEN_DR_CH_0001-0016'</li></ol>			<p><b>ISSUE</b> 23/02/16 ENVIRONMENTAL STATEMENT ISSUE ERM NJR PAI</p> <p><b>ISSUE 2</b> 24/08/16 SUPPLEMENTARY ISSUE ERM NJR PAI</p> <p>Rev. Date Description By Chk'd App'd</p>			<p>Drawing Status</p> <p>Project Team</p> <p>Client</p>			<p>Subsidiary</p> <p>Project Title</p> <p>M4 CORRIDOR AROUND NEWPORT</p>			<p>Drawing Title</p> <p>FIGURE R9.21 EXISTING VEGETATION &amp; CLEARANCE DRAWINGS SHEET 9 OF 16</p>			<p>Scale</p> <p>1:2500</p> <p>Original Size</p> <p>A1</p>			<p>Designed / Drawn</p> <p>ERM</p> <p>Date</p> <p>23/08/16</p>			<p>Checked</p> <p>NJR</p> <p>Date</p> <p>23/08/16</p>			<p>Approved</p> <p>PAI</p> <p>Date</p> <p>24/08/16</p>			<p>Authorised</p> <p>KEN</p> <p>Date</p> <p>01/09/16</p>			<p>Drawing Number</p> <p>Project</p> <p>M4CaN - DJV - ELS - ZG_GEN - DR - EN - 0025</p>			<p>Originator</p> <p>Volume</p> <p>Revision</p>			<p>ISSUE 2</p>		
---	--	--	---	--	--	---	--	--	------------------------	--	--	---	--	--	---	--	--	---	--	--	--	--	--	---	--	--	---	--	--	--	--	--	---	--	--	--	--	--	--	--	--	---	--	--	---	--	--	----------------	--	--



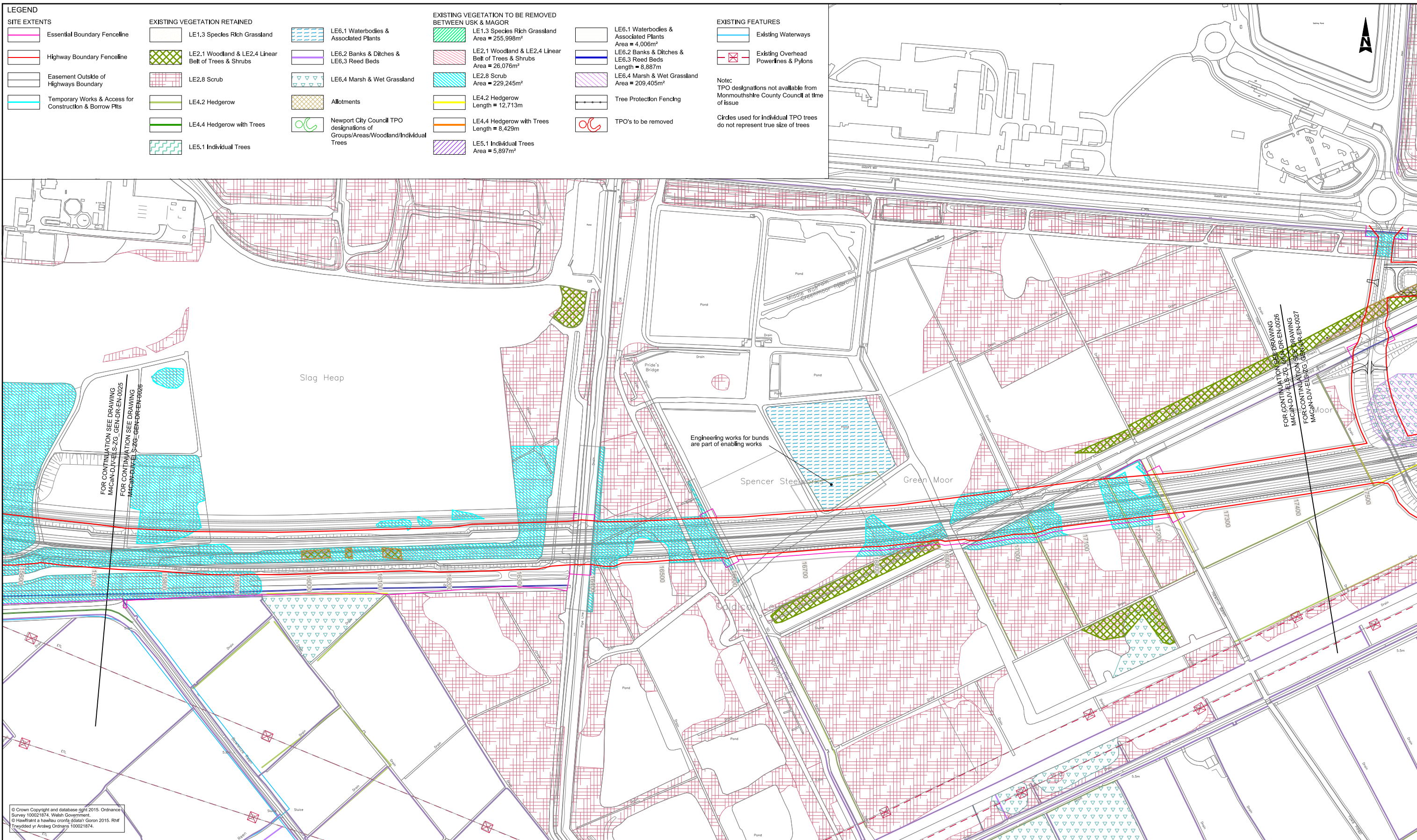
DO NOT SCALE

Millimetres

0

10

100



Environmental Functions (EF):

EFA Visual Screening

EFB Landscape Integration

EFC Enhancing the Built Environment

EFD Nature Conservation and Biodiversity

EFE Visual Amenity

EFF Heritage

EFG Auditory Amenity

EFH Water Quality

EFJ Agricultural Highway Boundary

EFK Access

Landscape Elements (LE):

LE 1.1 Amenity Grassland

LE 1.3 Species Rich Grassland

LE 1.4 Rock and Scree

LE 1.6 Open Grassland

LE 2.1 Woodland

LE 2.4 Linear Belt of Shrubs and Trees

LE 2.5 Shrubs with Intermittent Trees

LE 2.6 Shrubs

LE 3.1 Amenity Tree and Shrub Planting

LE 3.2 Ornamental Shrubs

LE 4.3 Native Species Hedgerows

LE 4.4 Native Hedgerows with Trees

LE 5.1 Individual Trees

LE 6.3 Reed Beds

LE 6.4 Marsh and Wet Grassland

LE 7 Hard Landscape

Environmental Elements:

E1 Auditory Amenity

E1.1 Noise Reducing Surface

E1.2 Noise Barrier-Built Elements

E1.3 Noise Earthworks

E2 Water Quality

E2.1 Water Pollution Control Measures

E3 Nature Conservation and Biodiversity

E3.1 Protected Species

E3.2 Ecological Protection Measures

KEY PLAN

GENERAL NOTES

1. ALL DIMENSIONS ARE IN METRES UNLESS NOTED OTHERWISE.

2. ONLY WRITTEN DIMENSIONS SHALL BE USED, DO NOT SCALE.

3. DRAWINGS TO BE READ IN CONJUNCTION WITH LANDSCAPE ENVIRONMENTAL MASTERPLANS DRAWINGS 'M4CaN-DJV-ELS-ZG\_GEN\_DR\_EN\_0001-0016' AND GENERAL ARRANGEMENT DRAWINGS 'M4CaN-DJV-HGN-ZG\_GEN\_DR\_CH\_0001-0016'

Drawing Status

Project Team

Client

Subsidiary

Project Title

M4 CORRIDOR AROUND NEWPORT

Drawing Title

FIGURE R9.21

EXISTING VEGETATION & CLEARANCE DRAWINGS

SHEET 10 OF 16

Scale

1:2500

Designed / Drawn

ERM

Checked

NJR

Approved

PAI

Authorised

KEN

Original Size

A1

Date

23/08/16

Date

23/08/16

Date

24/08/16

Date

01/09/16

Drawing Number

Project

M4CaN - DJV - ELS - ZG\_GEN - DR - EN - 0026

Originator

Volume

Revision

ISSUE 2

Location

Type

Role

Number

ISSUE

23/02/16

ENVIRONMENTAL STATEMENT ISSUE

ERM

NJR

PAI

ISSUE 2

24/08/16

SUPPLEMENTARY ISSUE

ERM

NJR

PAI

Rev.

Date

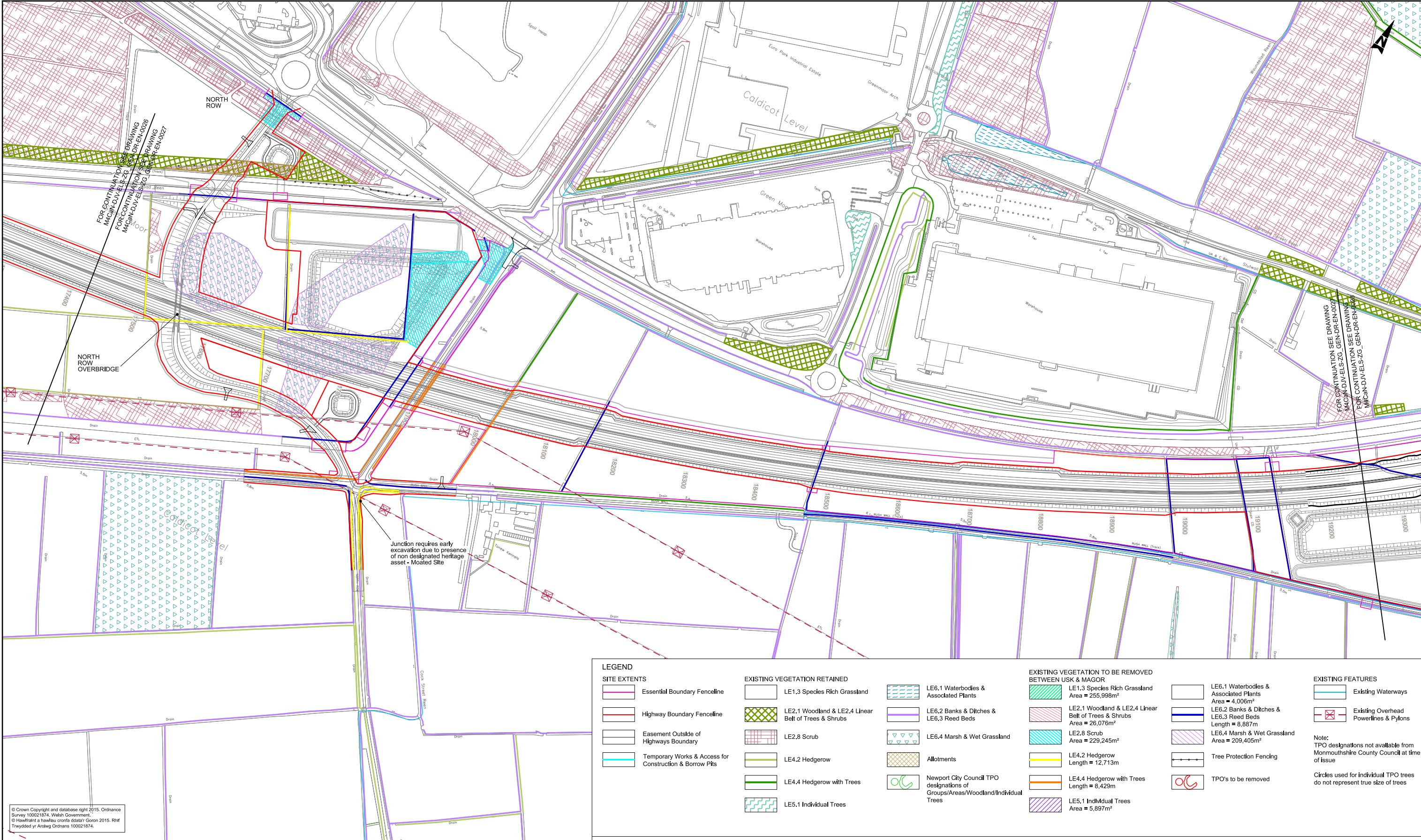
Description

By

Chk'd

App'd





© Crown Copyright and database right 2015. Ordnance Survey 100021874. Welsh Government.  
© Hafwrant a hawlfraethoriaeth Goron 2015. Rhf. Trwydded yr Arolwg Ordnans 100021874.

**LEGEND**  
**SITE EXTENTS**

- Essential Boundary Fenceline
- Highway Boundary Fenceline
- Easement Outside of Highways Boundary
- Temporary Works & Access for Construction & Borrow Pits

**EXISTING VEGETATION RETAINED**

- LE1.3 Species Rich Grassland
- LE2.1 Woodland & LE2.4 Linear Belt of Trees & Shrubs
- LE2.8 Scrub
- LE4.2 Hedgerow
- LE4.4 Hedgerow with Trees
- LE5.1 Individual Trees

- LE6.1 Waterbodies & Associated Plants
- LE6.2 Banks & Ditches & LE6.3 Reed Beds
- LE6.4 Marsh & Wet Grassland
- Allotments
- Newport City Council TPO designations of Groups/Areas/Woodland/Individual Trees

**EXISTING VEGETATION TO BE REMOVED BETWEEN USK & MAGOR**

- LE1.3 Species Rich Grassland Area = 255,998m<sup>2</sup>
- LE2.1 Woodland & LE2.4 Linear Belt of Trees & Shrubs Area = 26,076m<sup>2</sup>
- LE2.8 Scrub Area = 229,245m<sup>2</sup>
- LE4.2 Hedgerow Length = 12,713m
- LE4.4 Hedgerow with Trees Length = 8,429m
- LE5.1 Individual Trees Area = 5,897m<sup>2</sup>

- LE6.1 Waterbodies & Associated Plants Area = 4,006m<sup>2</sup>
- LE6.2 Banks & Ditches & LE6.3 Reed Beds Length = 8,887m
- LE6.4 Marsh & Wet Grassland Area = 209,405m<sup>2</sup>
- Tree Protection Fencing
- TPO's to be removed

**EXISTING FEATURES**

- Existing Waterways
- Existing Overhead Powerlines & Pylons

Note:  
TPO designations not available from Monmouthshire County Council at time of issue

Circles used for individual TPO trees do not represent true size of trees

**Environmental Functions (EF):**

- EFA Visual Screening
- EFB Landscape Integration
- EFC Enhancing the Built Environment
- EFD Nature Conservation and Biodiversity
- EFE Visual Amenity
- EFF Heritage
- EFG Auditory Amenity
- EFH Water Quality
- EFJ Agricultural Highway Boundary
- EFK Access

**Landscape Elements (LE):**

- LE 1.1 Amenity Grassland
- LE 1.3 Species Rich Grassland
- LE 1.4 Rock and Scree
- LE 1.6 Open Grassland
- LE 2.1 Woodland
- LE 2.4 Linear Belt of Shrubs and Trees
- LE 2.5 Shrubs with Intermittent Trees
- LE 2.6 Shrubs
- LE 3.1 Amenity Tree and Shrub Planting
- LE 3.2 Ornamental Shrubs
- LE 4.3 Native Species Hedgerows
- LE 4.4 Native Hedgerows with Trees
- LE 5.1 Individual Trees
- LE 6.3 Reed Beds
- LE 6.4 Marsh and Wet Grassland
- LE 7 Hard Landscape

**Environmental Elements:**

- E1 Auditory Amenity
- E1.1 Noise Reducing Surface
- E1.2 Noise Barrier-Built Elements
- E1.3 Noise Earthworks
- E2 Water Quality
- E2.1 Water Pollution Control Measures
- E3 Nature Conservation and Biodiversity
- E3.1 Protected Species
- E3.2 Ecological Protection Measures

**KEY PLAN**

**GENERAL NOTES**

- ALL DIMENSIONS ARE IN METRES UNLESS NOTED OTHERWISE.
- ONLY WRITTEN DIMENSIONS SHALL BE USED, DO NOT SCALE.
- DRAWINGS TO BE READ IN CONJUNCTION WITH LANDSCAPE ENVIRONMENTAL MASTERPLANS DRAWINGS 'M4CaN-DJV-ELS-ZG\_GEN\_DR\_EN\_0001-0016' AND GENERAL ARRANGEMENT DRAWINGS 'M4CaN-DJV-HGN-ZG\_GEN\_DR\_CH\_0001-0016'

ISSUE	23/02/16	ENVIRONMENTAL STATEMENT ISSUE	ERM	NJR	PAI
ISSUE 2	24/08/16	SUPPLEMENTARY ISSUE	ERM	NJR	PAI
Rev.	Date	Description	By	Chk'd	App'd

Drawing Status

Suitability

Project Title

Drawing Title

Scale

Original Size

Drawing Number

Project

Originator

Volume

Location

Type

Role

Number

Llywodraeth Cymru  
Welsh Government

Client

23/08/16

23/08/16

24/08/16

01/09/16

23/08/16

23/08/16

24/08/16

01/09/16

23/08/16

23/08/16

24/08/16

01/09/16

23/08/16

23/08/16

24/08/16

01/09/16

M4 CORRIDOR AROUND NEWPORT

FIGURE R9.21  
EXISTING VEGETATION & CLEARANCE DRAWINGS  
SHEET 11 OF 16

M4CaN - DJV - ELS -  
ZG\_GEN - DR - EN - 0027

ISSUE 2



DO NOT SCALE

0 10 100  
Millimetres

LEGEND

SITE EXTENTS

- Essential Boundary Fenceline
- Highway Boundary Fenceline
- Easement Outside of Highways Boundary
- Temporary Works & Access for Construction & Borrow Pits

EXISTING VEGETATION RETAINED

- LE1.3 Species Rich Grassland
- LE2.1 Woodland & LE2.4 Linear Belt of Trees & Shrubs
- LE2.8 Scrub
- LE4.2 Hedgerow
- LE4.4 Hedgerow with Trees
- LE5.1 Individual Trees

- LE6.1 Waterbodies & Associated Plants
- LE6.2 Banks & Ditches & LE6.3 Reed Beds
- LE6.4 Marsh & Wet Grassland
- Allotments
- Newport City Council TPO designations of Groups/Areas/Woodland/Individual Trees

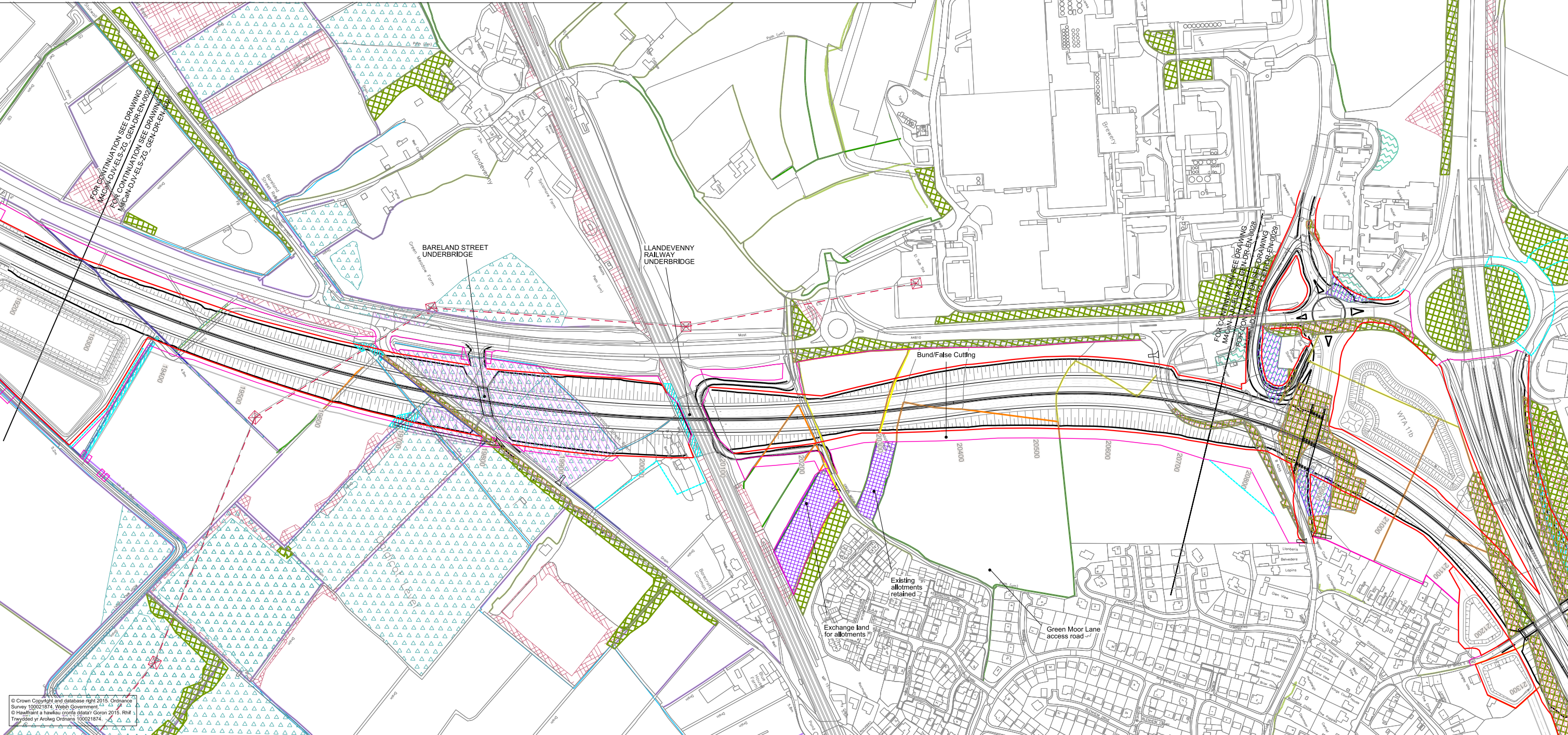
EXISTING VEGETATION TO BE REMOVED BETWEEN USK & MAGOR

- LE1.3 Species Rich Grassland Area = 255,998m<sup>2</sup>
- LE2.1 Woodland & LE2.4 Linear Belt of Trees & Shrubs Area = 26,076m<sup>2</sup>
- LE2.8 Scrub Area = 229,245m<sup>2</sup>
- LE4.2 Hedgerow Length = 12,713m
- LE4.4 Hedgerow with Trees Length = 8,429m
- LE5.1 Individual Trees Area = 5,897m<sup>2</sup>

- LE6.1 Waterbodies & Associated Plants Area = 4,006m<sup>2</sup>
- LE6.2 Banks & Ditches & LE6.3 Reed Beds Length = 8,887m
- LE6.4 Marsh & Wet Grassland Area = 209,405m<sup>2</sup>
- Tree Protection Fencing
- TPO's to be removed

EXISTING FEATURES

- Existing Waterways
  - Existing Overhead Powerlines & Pylons
- Note:  
TPO designations not available from Monmouthshire County Council at time of issue
- Circles used for Individual TPO trees do not represent true size of trees



© Crown Copyright and database right 2015, Ordnance Survey 100021874, Welsh Government.  
© Hwylfwrdd a hysbysu corffo staton 2015. Rhif 100021874.  
Trwydded yr Arolwg Ordnance 100021874.

Environmental Functions (EF):

- EFA Visual Screening
- EFB Landscape Integration
- EFC Enhancing the Built Environment
- EFD Nature Conservation and Biodiversity
- EFE Visual Amenity
- EFF Heritage
- EFG Auditory Amenity
- EFH Water Quality
- EFJ Agricultural Highway Boundary
- EFK Access

Landscape Elements (LE):

- LE 1.1 Amenity Grassland
- LE 1.3 Species Rich Grassland
- LE 1.4 Rock and Scree
- LE 1.6 Open Grassland
- LE 2.1 Woodland
- LE 2.4 Linear Belt of Shrubs and Trees
- LE 2.5 Shrubs with Intermittent Trees
- LE 2.6 Shrubs
- LE 3.1 Amenity Tree and Shrub Planting
- LE 3.2 Ornamental Shrubs
- LE 4.3 Native Species Hedgerows
- LE 4.4 Native Hedgerows with Trees
- LE 5.1 Individual Trees
- LE 6.3 Reed Beds
- LE 6.4 Marsh and Wet Grassland
- LE 7 Hard Landscape

Environmental Elements:

- E1 Auditory Amenity
- E1.1 Noise Reducing Surface
- E1.2 Noise Barrier-Built Elements
- E1.3 Noise Earthworks
- E2 Water Quality
- E2.1 Water Pollution Control Measures
- E3 Nature Conservation and Biodiversity
- E3.1 Protected Species
- E3.2 Ecological Protection Measures

KEY PLAN



GENERAL NOTES

- ALL DIMENSIONS ARE IN METRES UNLESS NOTED OTHERWISE.
- ONLY WRITTEN DIMENSIONS SHALL BE USED, DO NOT SCALE.
- DRAWINGS TO BE READ IN CONJUNCTION WITH LANDSCAPE ENVIRONMENTAL MASTERPLANS DRAWINGS 'M4CaN-DJV-ELS-ZG\_GEN\_DR\_EN\_0001-0016' AND GENERAL ARRANGEMENT DRAWINGS 'M4CaN-DJV-HGN-ZG\_GEN\_DR\_CH\_0001-0016'

Rev.	Date	Description	By	Chk'd	App'd
ISSUE	23/02/16	ENVIRONMENTAL STATEMENT ISSUE	ERM	NJR	PAI
ISSUE 2	24/08/16	SUPPLEMENTARY ISSUE	ERM	NJR	PAI

Drawing Status	Subsidiary	Project Title
Project Team		M4 CORRIDOR AROUND NEWPORT
Client		

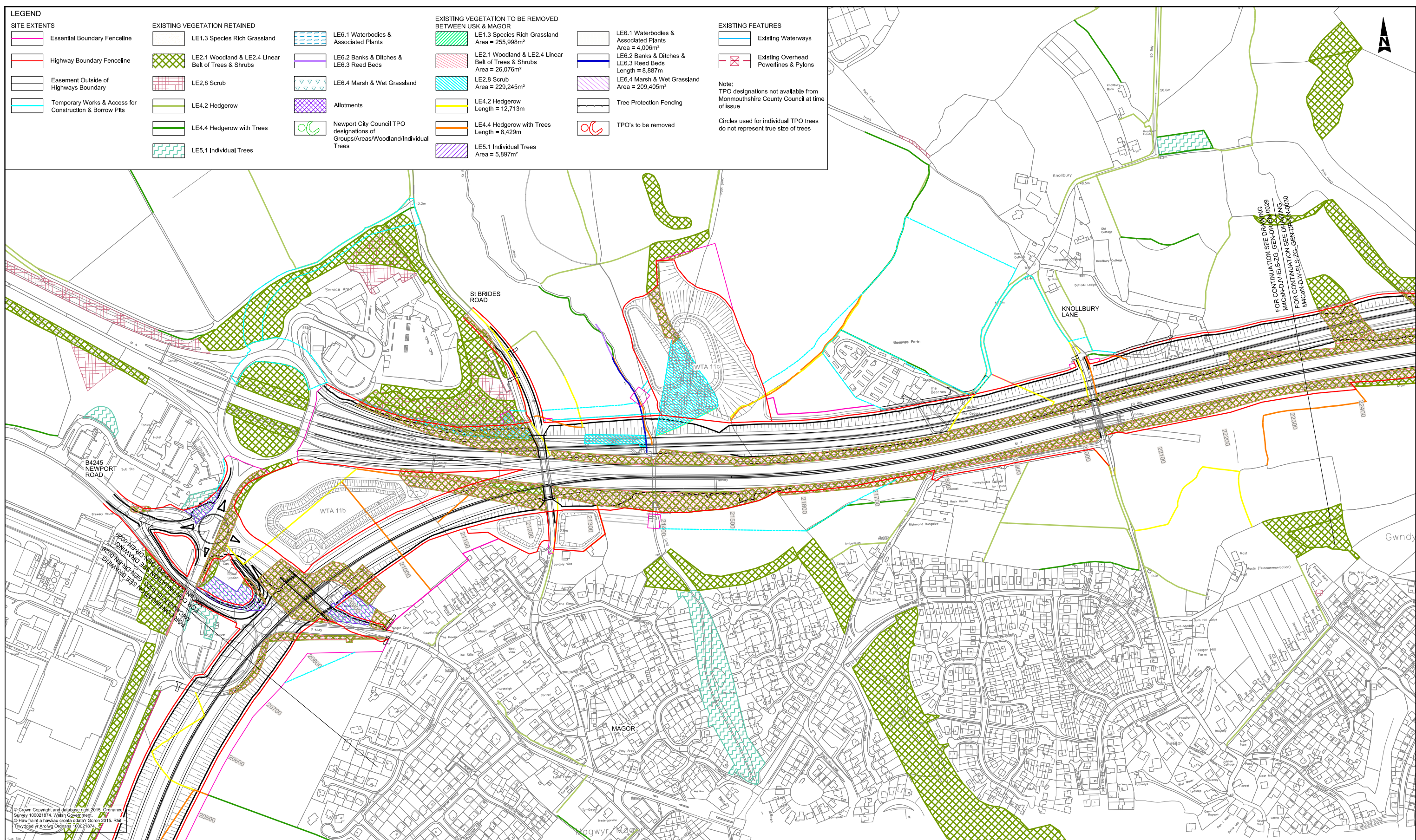


Drawing Title					
FIGURE R9.21 EXISTING VEGETATION & CLEARANCE DRAWINGS SHEET 12 OF 16					
Scale	1:2500	Designed / Drawn	ERM	Checked	NJR
Original Size	A1	Date	23/08/16	Date	23/08/16
Drawing Number	Project	Originator	M4CaN - DJV - ELS - ZG_GEN - DR - EN - 0028	Volume	PAI
Location	Type	Role	Number	Revision	ISSUE 2



DO NOT SCALE

0 10 100  
Millimetres



**Environmental Functions (EF):**

- EFA Visual Screening
- EFB Landscape Integration
- EFC Enhancing the Built Environment
- EFD Nature Conservation and Biodiversity
- EFE Visual Amenity
- EFF Heritage
- EFG Auditory Amenity
- EFH Water Quality
- EFJ Agricultural Highway Boundary
- EFK Access

**Landscape Elements (LE):**

- LE 1.1 Amenity Grassland
- LE 1.3 Species Rich Grassland
- LE 1.4 Rock and Scree
- LE 1.6 Open Grassland
- LE 2.1 Woodland
- LE 2.4 Linear Belt of Shrubs and Trees
- LE 2.5 Shrubs with Intermittent Trees
- LE 2.6 Shrubs
- LE 3.1 Amenity Tree and Shrub Planting
- LE 3.2 Ornamental Shrubs
- LE 4.3 Native Species Hedgerows
- LE 4.4 Native Hedgerows with Trees
- LE 5.1 Individual Trees
- LE 6.3 Reed Beds
- LE 6.4 Marsh and Wet Grassland
- LE 7 Hard Landscape

**Environmental Elements:**

- E1 Auditory Amenity
- E1.1 Noise Reducing Surface
- E1.2 Noise Barrier-Built Elements
- E1.3 Noise Earthworks
- E2 Water Quality
- E2.1 Water Pollution Control Measures
- E3 Nature Conservation and Biodiversity
- E3.1 Protected Species
- E3.2 Ecological Protection Measures

**KEY PLAN**

**GENERAL NOTES**

1. ALL DIMENSIONS ARE IN METRES UNLESS NOTED OTHERWISE.

2. ONLY WRITTEN DIMENSIONS SHALL BE USED, DO NOT SCALE.


3. DRAWINGS TO BE READ IN CONJUNCTION WITH LANDSCAPE ENVIRONMENTAL MASTERPLANS DRAWINGS 'M4CaN-DJV-ELS-ZG\_GEN-DR-EN\_0001-0016' AND GENERAL ARRANGEMENT DRAWINGS 'M4CaN-DJV-HGN-ZG\_GEN-DR-CH\_0001-0016'

Rev.	Date	Description	By	Chkd	Appd	
ISSUE	23/02/16	ENVIRONMENTAL STATEMENT ISSUE		ERM	NJR	PAI
ISSUE 2	24/08/16	SUPPLEMENTARY ISSUE		ERM	NJR	PAI

Drawing Status

Project Team

Client



Llywodraeth Cymru  
Welsh Government

**M4 CORRIDOR AROUND NEWPORT**

Drawing Title

**FIGURE R9.21  
EXISTING VEGETATION & CLEARANCE DRAWINGS  
SHEET 13 OF 16**

Scale	Designed / Drawn	Checked	Approved	Authorised
1:2500	ERM	NJR	PAI	KEN

Original Size	Date	Date	Date	Date
A1	23/08/16	23/08/16	24/08/16	01/09/16

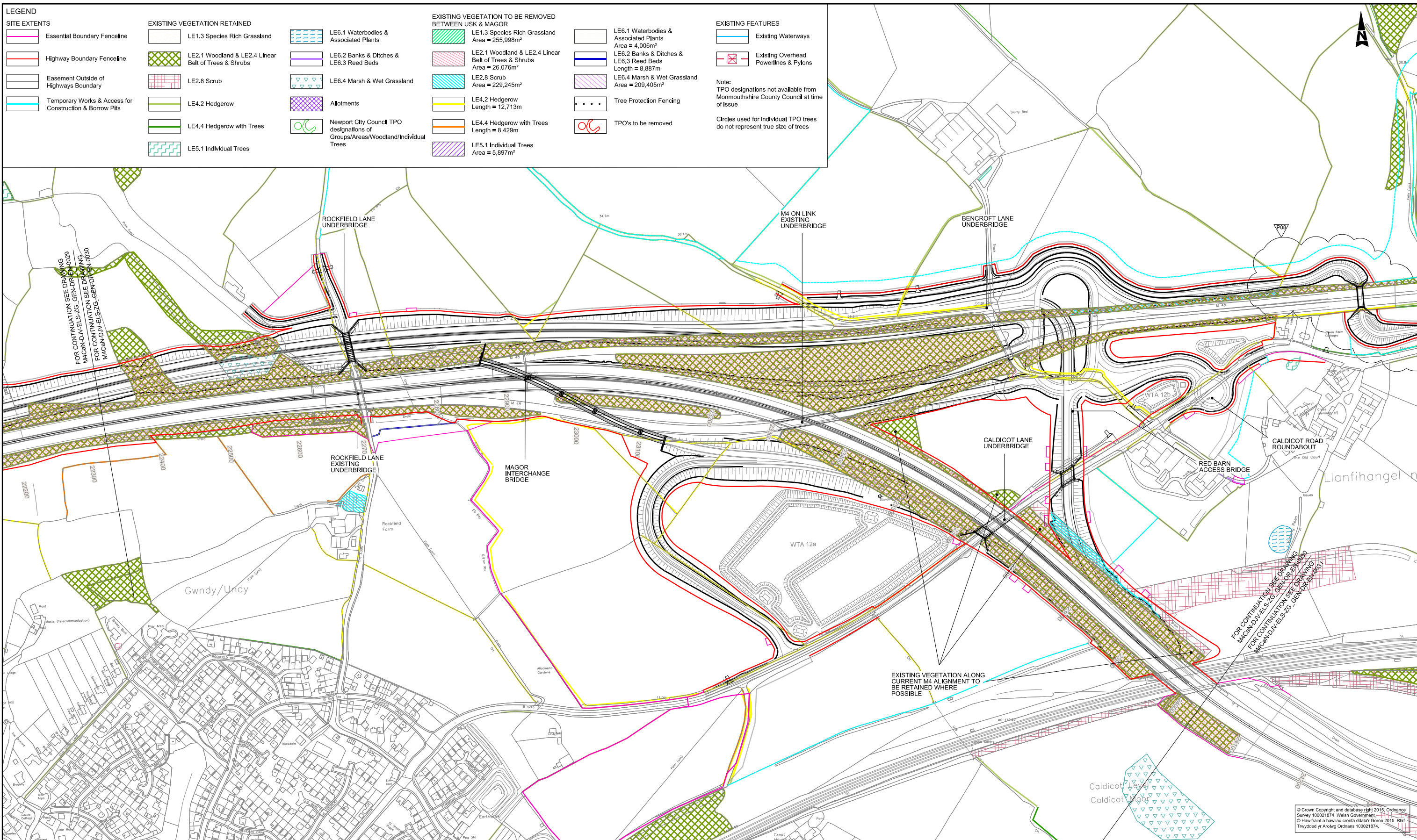
Drawing Number	Project	Originator	Volume	Revision
		M4CaN - DJV - ELS - ZG_GEN - DR - EN - 0029		ISSUE 2



DO NOT SCALE

Millimetres

0 10 100



**Environmental Functions (EF):**

- EFA Visual Screening
- EFB Landscape Integration
- EFC Enhancing the Built Environment
- EFD Nature Conservation and Biodiversity
- EFE Visual Amenity
- EFF Heritage
- EFG Auditory Amenity
- EFH Water Quality
- EFJ Agricultural Highway Boundary
- EFK Access

**Landscape Elements (LE):**

- LE 1.1 Amenity Grassland
- LE 1.3 Species Rich Grassland
- LE 1.4 Rock and Scree
- LE 1.6 Open Grassland
- LE 2.1 Woodland
- LE 2.4 Linear Belt of Shrubs and Trees
- LE 2.5 Shrubs with Intermittent Trees
- LE 2.6 Shrubs
- LE 3.1 Amenity Tree and Shrub Planting
- LE 3.2 Ornamental Shrubs
- LE 4.3 Native Species Hedgerows
- LE 4.4 Native Hedgerows with Trees
- LE 5.1 Individual Trees
- LE 6.3 Reed Beds
- LE 6.4 Marsh and Wet Grassland
- LE 7 Hard Landscape

**Environmental Elements:**

- E1 Auditory Amenity
- E1.1 Noise Reducing Surface
- E1.2 Noise Barrier-Built Elements
- E1.3 Noise Earthworks
- E2 Water Quality
- E2.1 Water Pollution Control Measures
- E3 Nature Conservation and Biodiversity
- E3.1 Protected Species
- E3.2 Ecological Protection Measures

**KEY PLAN**

**GENERAL NOTES**

- 1. ALL DIMENSIONS ARE IN METRES UNLESS NOTED OTHERWISE.
- 2. ONLY WRITTEN DIMENSIONS SHALL BE USED, DO NOT SCALE.
- 3. DRAWINGS TO BE READ IN CONJUNCTION WITH LANDSCAPE ENVIRONMENTAL MASTERPLANS DRAWINGS 'M4CaN-DJV-ELS-ZG\_GEN\_DR\_EN\_0001-0016' AND GENERAL ARRANGEMENT DRAWINGS 'M4CaN-DJV-HGN-ZG\_GEN\_DR\_CH\_0001-0016'

ISSUE	23/02/16	ENVIRONMENTAL STATEMENT ISSUE	ERM	NJR	PAI
ISSUE 2	24/08/16	SUPPLEMENTARY ISSUE	ERM	NJR	PAI
Rev.	Date	Description	By	Chk'd	App'd

Llywodraeth Cymru  
Welsh Government

Drawing Status

Project Team

Client

Scale

1:2500

Original Size

A1

Designed / Drawn

ERM

Date

23/08/16

Checked

NJR

Date

23/08/16

Approved

PAI

Date

24/08/16

Authorised

KEN

Date

01/09/16

Drawing Number

Project

M4CaN - DJV - ELS - ZG\_GEN - DR - EN - 0030

Originator

Volume

ISSUE 2

Location

Type

Role

Number

Project Title

M4 CORRIDOR AROUND NEWPORT

Drawing Title

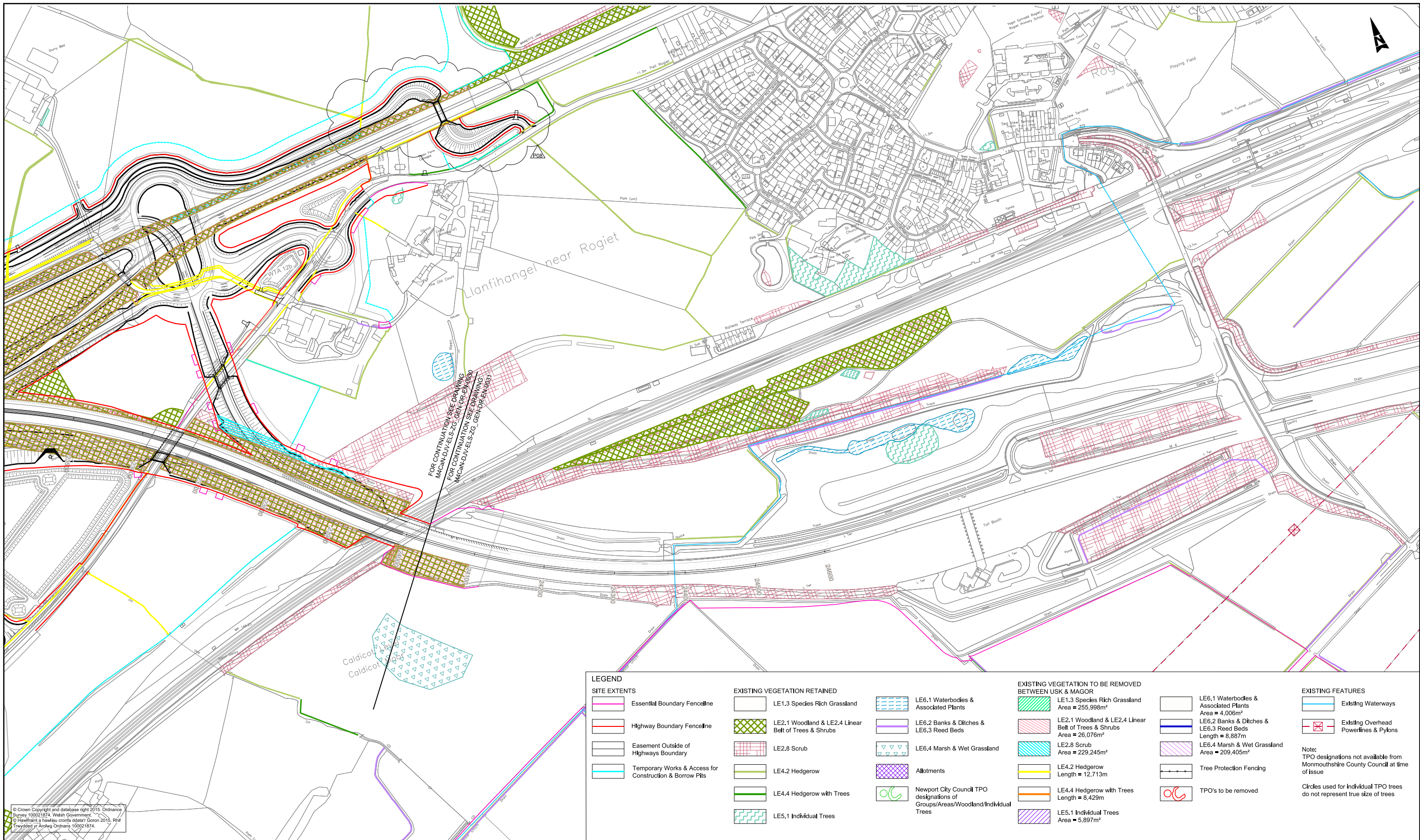
FIGURE R9.21  
EXISTING VEGETATION & CLEARANCE DRAWINGS  
SHEET 14 OF 16



DO NOT SCALE

Millimetres

0 10 100



FOR CONTINUATION SEE DRAWING  
M4CaN-DJV-ELS-ZG\_GEN-DR-EN-0030  
FOR CONTINUATION SEE DRAWING  
M4CaN-DJV-ELS-ZG\_GEN-DR-EN-0031

#### LEGEND

##### SITE EXTENTS

- Essential Boundary Fenceline
- Highway Boundary Fenceline
- Easement Outside of Highways Boundary
- Temporary Works & Access for Construction & Borrow Pits

##### EXISTING VEGETATION RETAINED

- LE1.3 Species Rich Grassland
- LE2.1 Woodland & LE2.4 Linear Belt of Trees & Shrubs
- LE2.8 Scrub
- LE4.2 Hedgerow
- LE4.4 Hedgerow with Trees
- LE5.1 Individual Trees
- LE6.1 Waterbodies & Associated Plants
- LE6.2 Banks & Ditches & LE6.3 Reed Beds
- LE6.4 Marsh & Wet Grassland
- Allotments
- Newport City Council TPO designations of Groups/Areas/Woodland/Individual Trees

##### EXISTING VEGETATION TO BE REMOVED BETWEEN USK & MAGOR

- LE1.3 Species Rich Grassland Area = 255,998m<sup>2</sup>
- LE2.1 Woodland & LE2.4 Linear Belt of Trees & Shrubs Area = 26,076m<sup>2</sup>
- LE2.8 Scrub Area = 229,245m<sup>2</sup>
- LE4.2 Hedgerow Length = 12,713m
- LE4.4 Hedgerow with Trees Length = 8,429m
- LE5.1 Individual Trees Area = 5,897m<sup>2</sup>
- LE6.1 Waterbodies & Associated Plants Area = 4,006m<sup>2</sup>
- LE6.2 Banks & Ditches & LE6.3 Reed Beds Length = 8,887m
- LE6.4 Marsh & Wet Grassland Area = 209,405m<sup>2</sup>
- Tree Protection Fencing
- TPO's to be removed

##### EXISTING FEATURES

- Existing Waterways
- Existing Overhead Powerlines & Pylons

Note:  
TPO designations not available from Monmouthshire County Council at time of issue

Circles used for individual TPO trees do not represent true size of trees

© Crown Copyright and database right 2015. Ordnance Survey 100021874. Welsh Government.  
© Hawfrainc a hawfrainc o'r ddiwedd 2015. Rhif Trwydded y'r Arolwg Ordnans 100021874.

#### Environmental Functions (EF):

- EFA Visual Screening
- EFB Landscape Integration
- EFC Enhancing the Built Environment
- EFD Nature Conservation and Biodiversity
- EFE Visual Amenity
- EFF Heritage
- EFG Auditory Amenity
- EFH Water Quality
- EFJ Agricultural Highway Boundary
- EFK Access

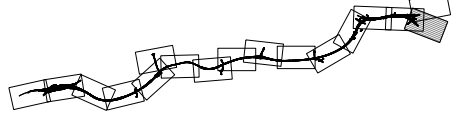
#### Landscape Elements (LE):

- LE 1.1 Amenity Grassland
- LE 1.3 Species Rich Grassland
- LE 1.4 Rock and Scree
- LE 1.6 Open Grassland
- LE 2.1 Woodland
- LE 2.4 Linear Belt of Shrubs and Trees
- LE 2.5 Shrubs with Intermittent Trees
- LE 2.6 Shrubs
- LE 3.1 Amenity Tree and Shrub Planting
- LE 3.2 Ornamental Shrubs
- LE 4.3 Native Species Hedgerows
- LE 4.4 Native Hedgerows with Trees
- LE 5.1 Individual Trees
- LE 6.3 Reed Beds
- LE 6.4 Marsh and Wet Grassland
- LE 7 Hard Landscape

#### Environmental Elements:

- E1 Auditory Amenity
- E1.1 Noise Reducing Surface
- E1.2 Noise Barrier-Built Elements
- E1.3 Noise Earthworks
- E2 Water Quality
- E2.1 Water Pollution Control Measures
- E3 Nature Conservation and Biodiversity
- E3.1 Protected Species
- E3.2 Ecological Protection Measures


#### KEY PLAN



#### GENERAL NOTES

- ALL DIMENSIONS ARE IN METRES UNLESS NOTED OTHERWISE.
- ONLY WRITTEN DIMENSIONS SHALL BE USED, DO NOT SCALE.
- DRAWINGS TO BE READ IN CONJUNCTION WITH LANDSCAPE ENVIRONMENTAL MASTERPLANS DRAWINGS 'M4CaN-DJV-ELS-ZG\_GEN-DR-EN-0016' AND GENERAL ARRANGEMENT DRAWINGS 'M4CaN-DJV-HGN-ZG\_GEN-DR-CH-0016'

Rev.	Date	Description	By	Chk'd	App'd
ISSUE	23/02/16	ENVIRONMENTAL STATEMENT ISSUE	ERM	NJR	PAI
ISSUE 2	24/08/16	SUPPLEMENTARY ISSUE	ERM	NJR	PAI

Drawing Status	Suitability	Project Title M4 CORRIDOR AROUND NEWPORT				
Project Team		Drawing Title <div>FIGURE R9.21</div> <div>EXISTING VEGETATION &amp; CLEARANCE DRAWINGS</div> <div>SHEET 15 OF 16</div>				
		Scale 1:2500	Designed / Drawn ERM	Checked NJR	Approved PAI	Authorised KEN
Client	 Llywodraeth Cymru Welsh Government	Original Size A1	Date 23/08/16	Date 23/08/16	Date 24/08/16	Date 01/09/16
		Drawing Number Project   Originator   Volume M4CaN - DJV - ELS - ZG_GEN - DR - EN - 0031				
		Location	Type	Role	Number	





