

Shellfish Waters (Wales) 2016

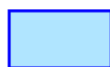
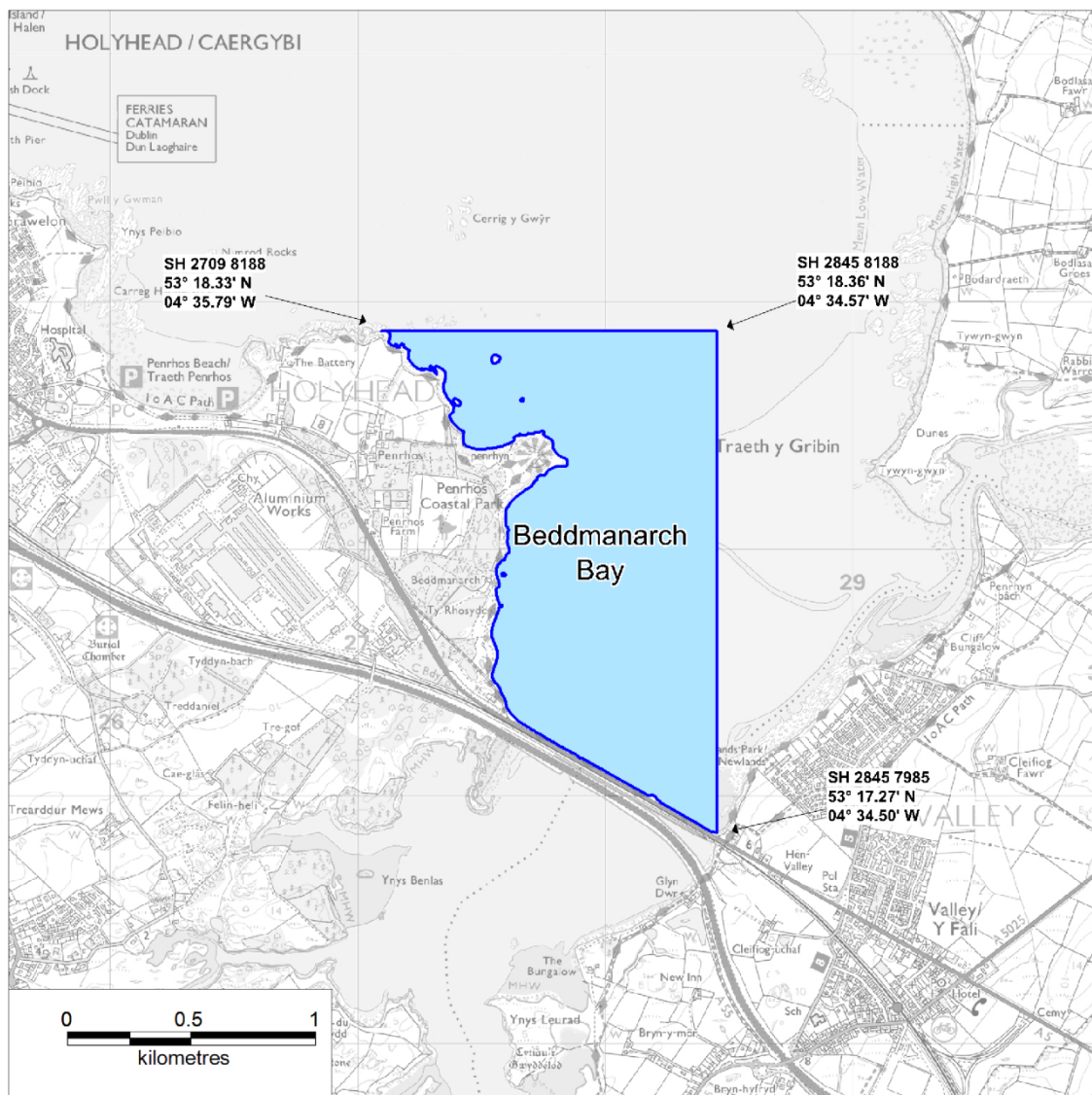
This list constitutes that which is referred to under 'The Water Environment (Water Framework Directive) (England and Wales) (Amendment) Regulations 2016' which come into force on 3 March 2016.

In accordance with the above regulations, this list replaces the notice that was provided to Natural Resources Wales under previous legislation, the title of which was the 'Shellfish Waters (Wales) Notice 2013'.

SCHEDULE

Coastal and brackish waters in Wales to which the classification of
Shellfish Water applies

Beddmanarch Bay - Shellfish Water



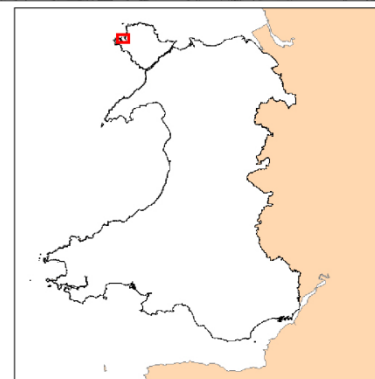
Designated Shellfish Water

The Water Environment
(Water Framework Directive)
(England and Wales) (Amendment)
Regulations 2016

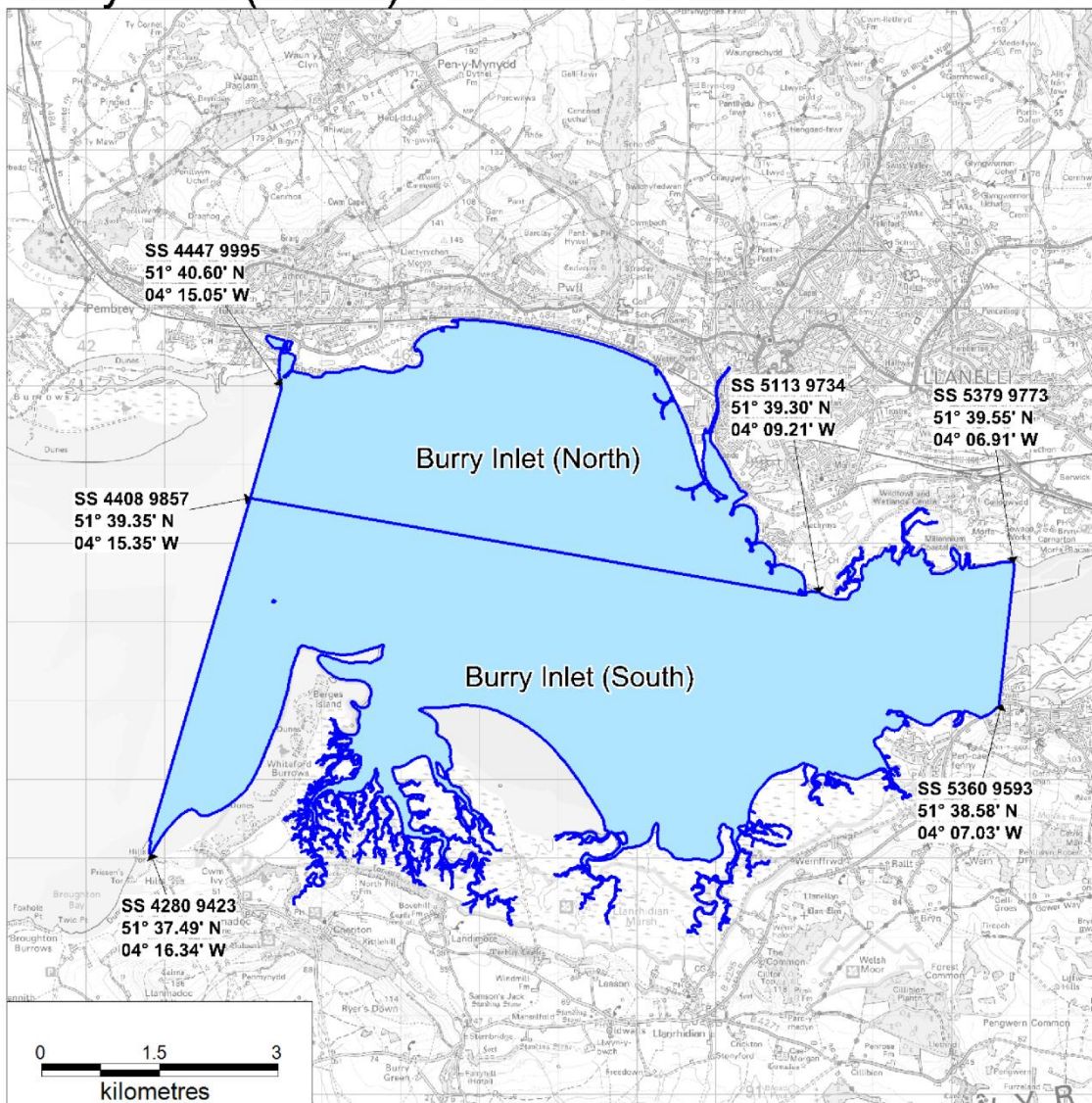
Map as produced by Cefas for the purposes of the
Surface Waters (Shellfish) (Classification) (Amendment) Regulations 2009

© Crown Copyright and Database 2013. All rights reserved.
Ordnance Survey licence number 10000356745

© Hawlfraint a hawliau cronfa ddata'r Goron 2013. Cedwir pob hawl.
Rhif Trwydded yr Arolwg Ordnans 10000356745



Burry Inlet (North), Burry Inlet (South) - Shellfish Waters



Designated Shellfish Water

The Water Environment
(Water Framework Directive)
(England and Wales) (Amendment)
Regulations 2016

Map as produced by Cefas for the purposes of the
Surface Waters (Shellfish) (Classification) (Amendment) Regulations 2009

© Crown Copyright and Database 2013. All rights reserved.
Ordnance Survey licence number 10000356745

© Hawlfraint a hawliau cronfa ddata'r Goron 2013. Cedwir pob hawl.
Rhif Trwydded yr Arolwg Ordnans 10000356745

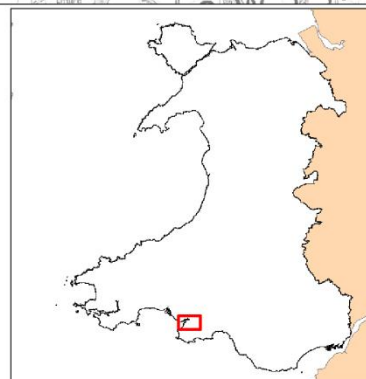


Llywodraeth Cymru
Welsh Government

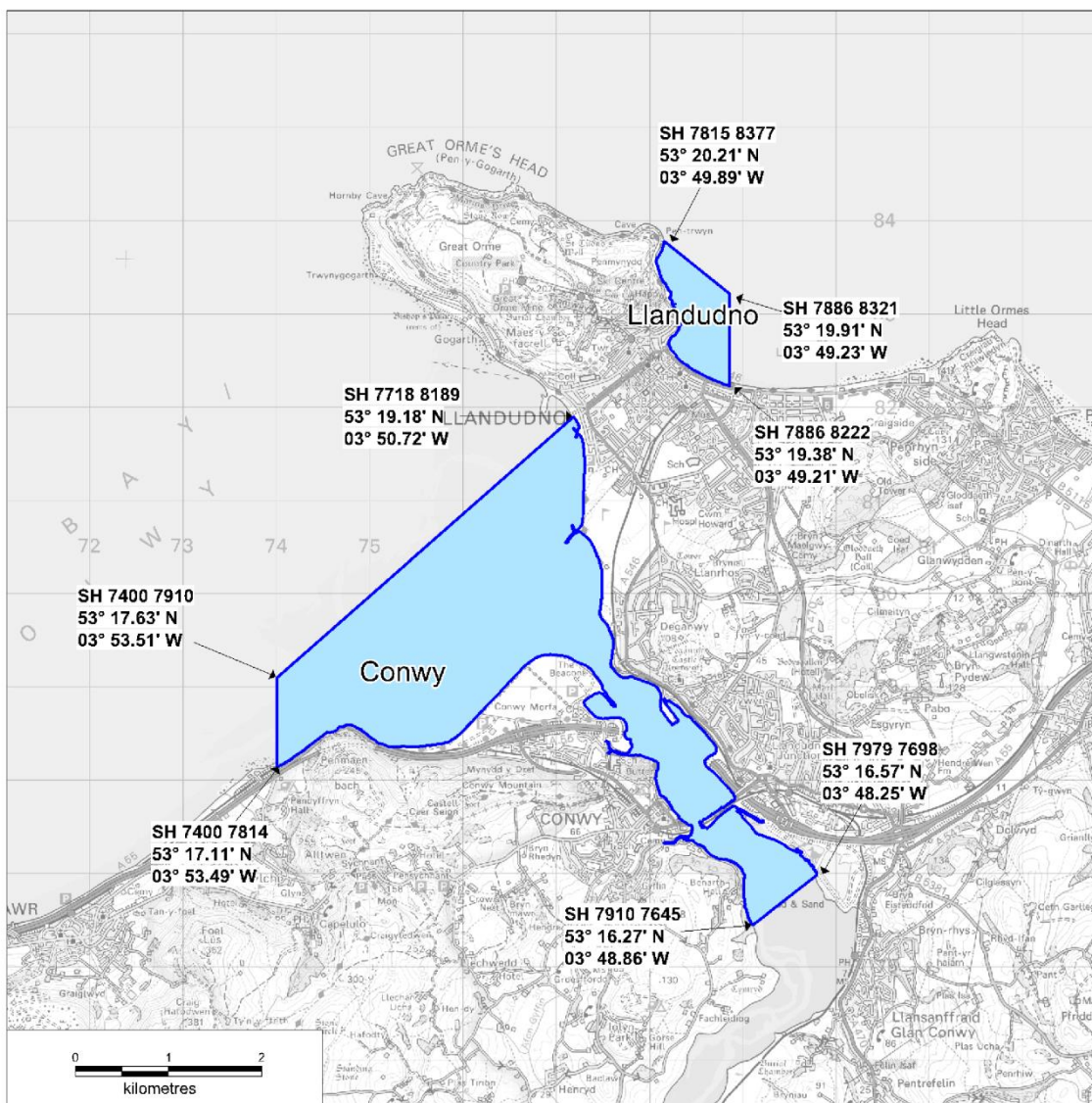
Cyfoeth
Naturiol
Cymru
Natural
Resources
Wales



Cefas



Conwy, Llandudno - Shellfish Waters



Designated Shellfish Water

The Water Environment
(Water Framework Directive)
(England and Wales) (Amendment)
Regulations 2016

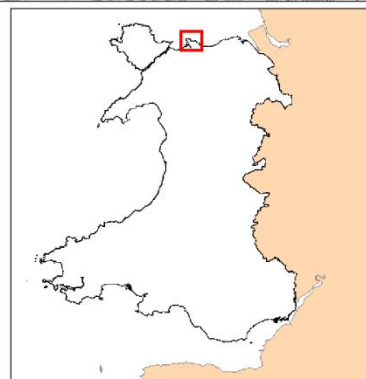
Map as produced by Cefas for the purposes of the
Surface Waters (Shellfish) (Classification) (Amendment) Regulations 2009

© Crown Copyright and Database 2013. All rights reserved.
Ordnance Survey licence number 10000356745

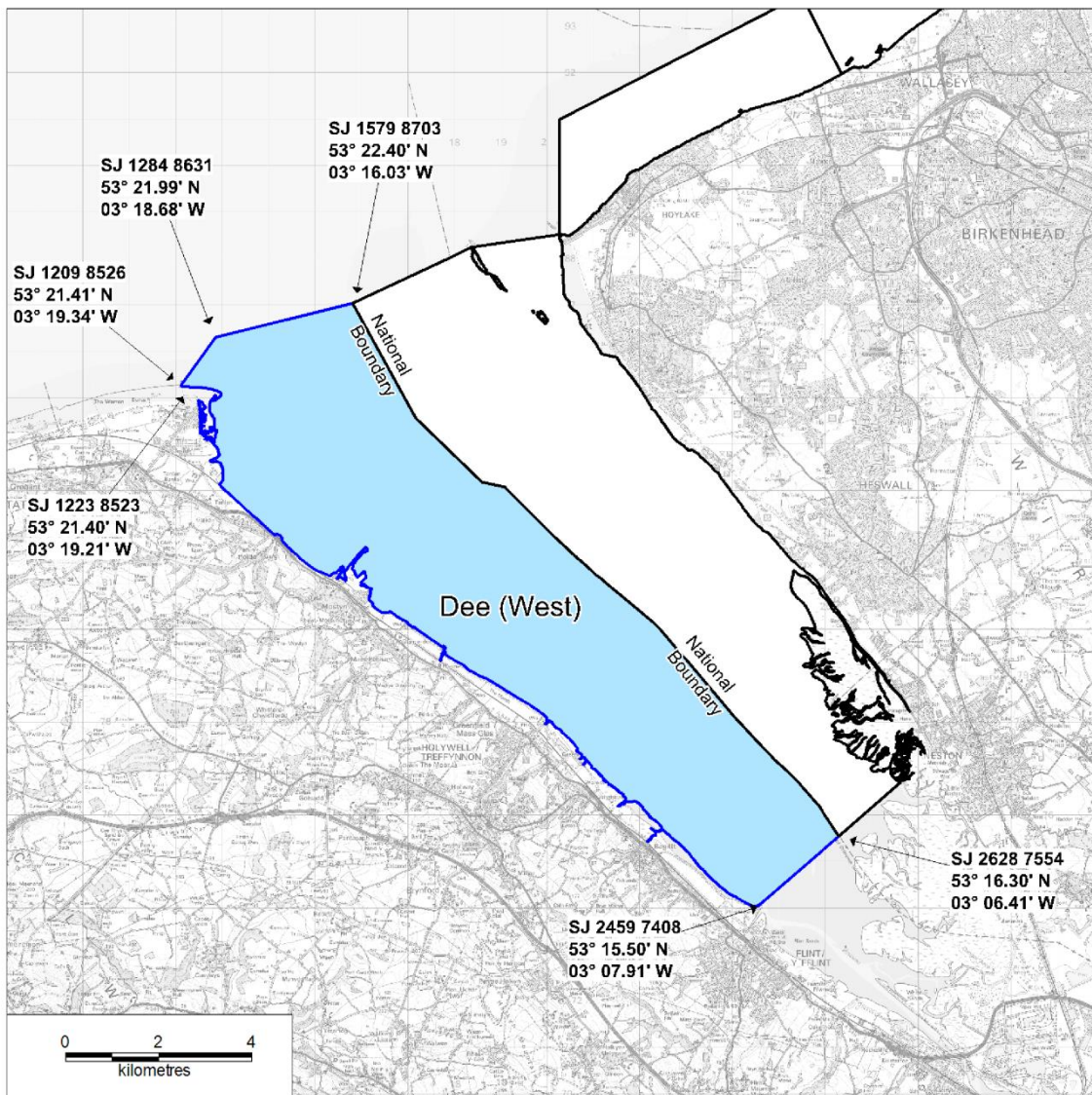
© Hawlfraint a hawliau cronfa ddata'r Goron 2013. Cedwir pob hawl.
Rhif Trwydded yr Arolwg Ordnans 10000356745



Llywodraeth Cymru
Welsh Government



Dee (West) - Shellfish Water



Designated Shellfish Water

The Water Environment
(Water Framework Directive)
(England and Wales) (Amendment)
Regulations 2016

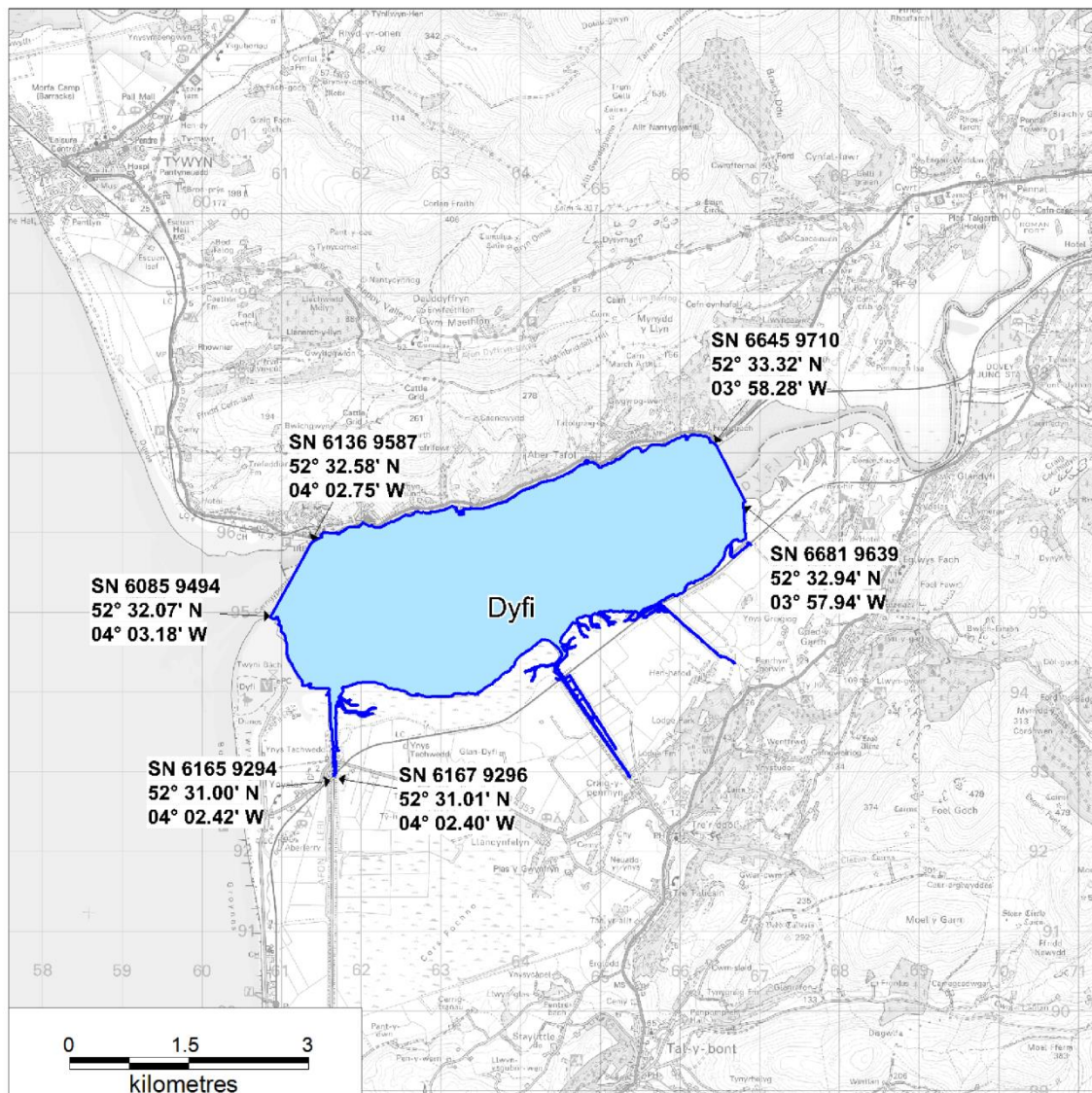
Map as produced by Cefas for the purposes of the
Surface Waters (Shellfish) (Classification) (Amendment) Regulations 2009

© Crown Copyright and Database 2013. All rights reserved.
Ordnance Survey licence number 10000356745

© Hawlfraint a hawliau cronfa ddata'r Goron 2013. Cedwir pob hawl.
Rhif Trwydded yr Arolwg Ordnans 10000356745



Dyfi (Dovey) - Shellfish Water



Designated Shellfish Water

The Water Environment
(Water Framework Directive)
(England and Wales) (Amendment)
Regulations 2016

Map as produced by Cefas for the purposes of the
Surface Waters (Shellfish) (Classification) (Amendment) Regulations 2009

© Crown Copyright and Database 2013. All rights reserved.
Ordnance Survey licence number 10000356745

© Hawlfraint a hawliau cronfa ddata'r Goron 2013. Cedwir pob hawl.
Rhif Trwydded yr Arolwg Ordnans 10000356745

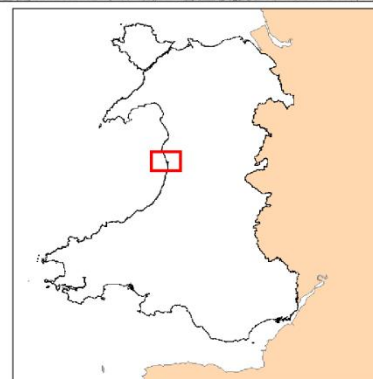


Llywodraeth Cymru
Welsh Government

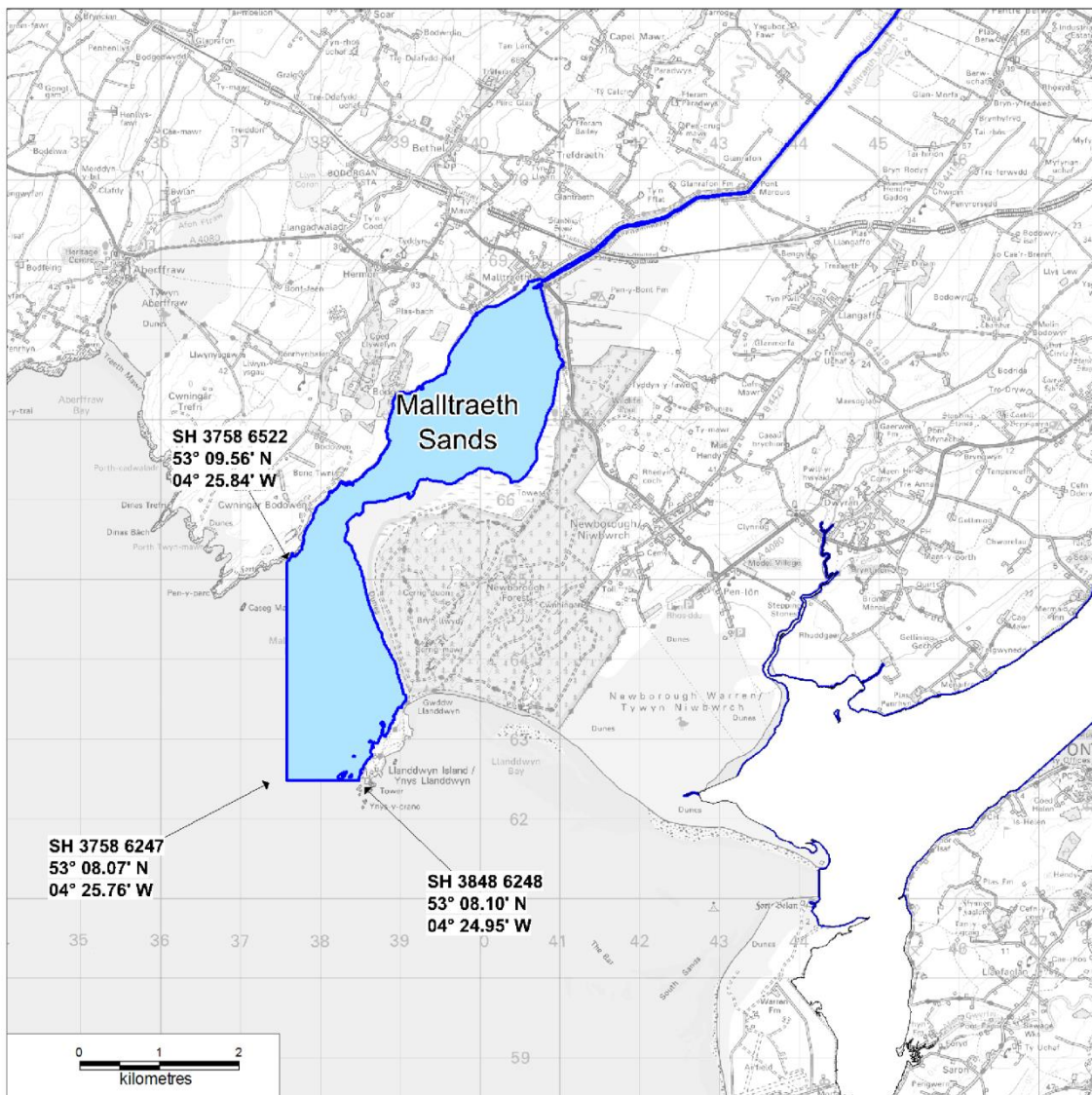
Cyfoeth Naturiol
Cymru
Natural Resources
Wales



Cefas



Malltraeth Sands - Shellfish Water



Designated Shellfish Water

The Water Environment
(Water Framework Directive)
(England and Wales) (Amendment)
Regulations 2016

Map as produced by Cefas for the purposes of the
Surface Waters (Shellfish) (Classification) (Amendment) Regulations 2009

© Crown Copyright and Database 2013. All rights reserved.
Ordnance Survey licence number 10000356745

© Hawlfraint a hawliau cronfa ddata'r Goron 2013. Cedwir pob hawl.
Rhif Trwydded yr Arolwg Ordnans 10000356745

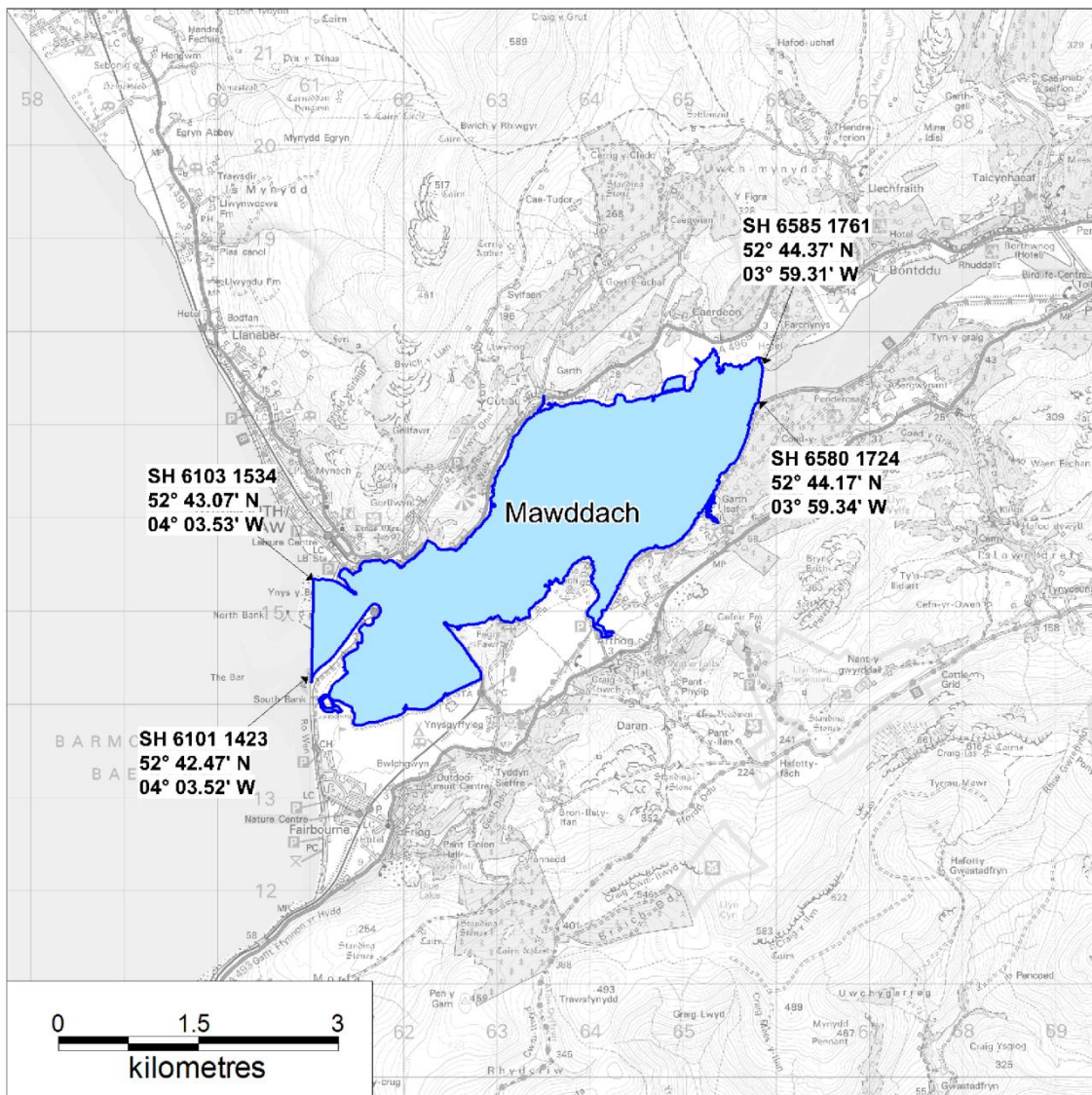


Llywodraeth Cymru
Welsh Government

Cyfoeth Naturiol
Cymru
Natural Resources
Wales



Mawddach- Shellfish Water



Designated Shellfish Water

The Water Environment
(Water Framework Directive)
(England and Wales) (Amendment)
Regulations 2016

Map as produced by Cefas for the purposes of the
Surface Waters (Shellfish) (Classification) (Amendment) Regulations 2009

© Crown Copyright and Database 2013. All rights reserved.
Ordnance Survey licence number 10000356745

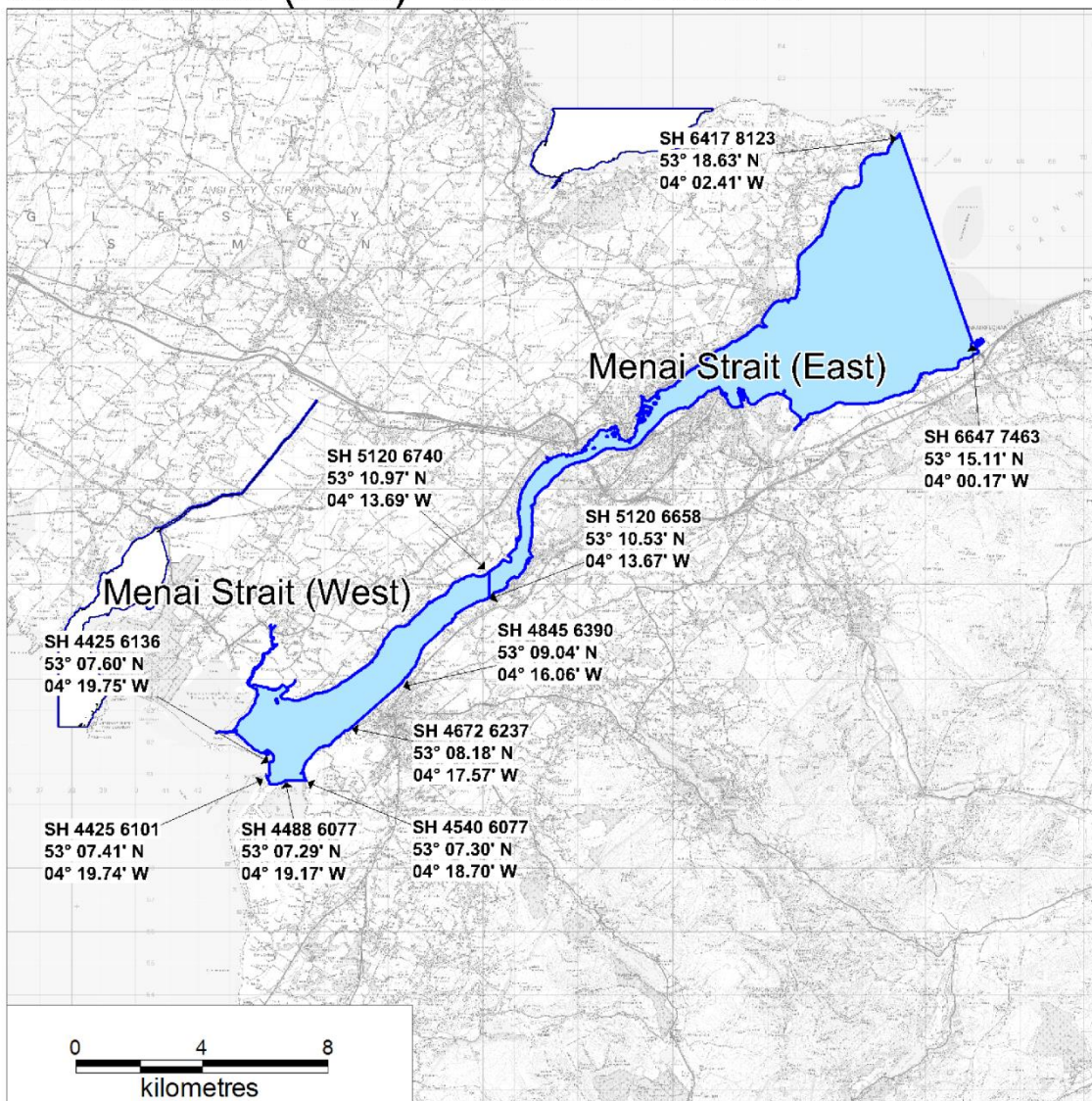
© Hawlfraint a hawliau cronfa ddata'r Goron 2013. Cedwir pob hawl.
Rhif Trwydded yr Arolwg Ordnans 10000356745



Llywodraeth Cymru
Welsh Government



Menai Strait (West), Menai Strait (East) - Shellfish Waters



Designated Shellfish Water

The Water Environment
(Water Framework Directive)
(England and Wales) (Amendment)
Regulations 2016

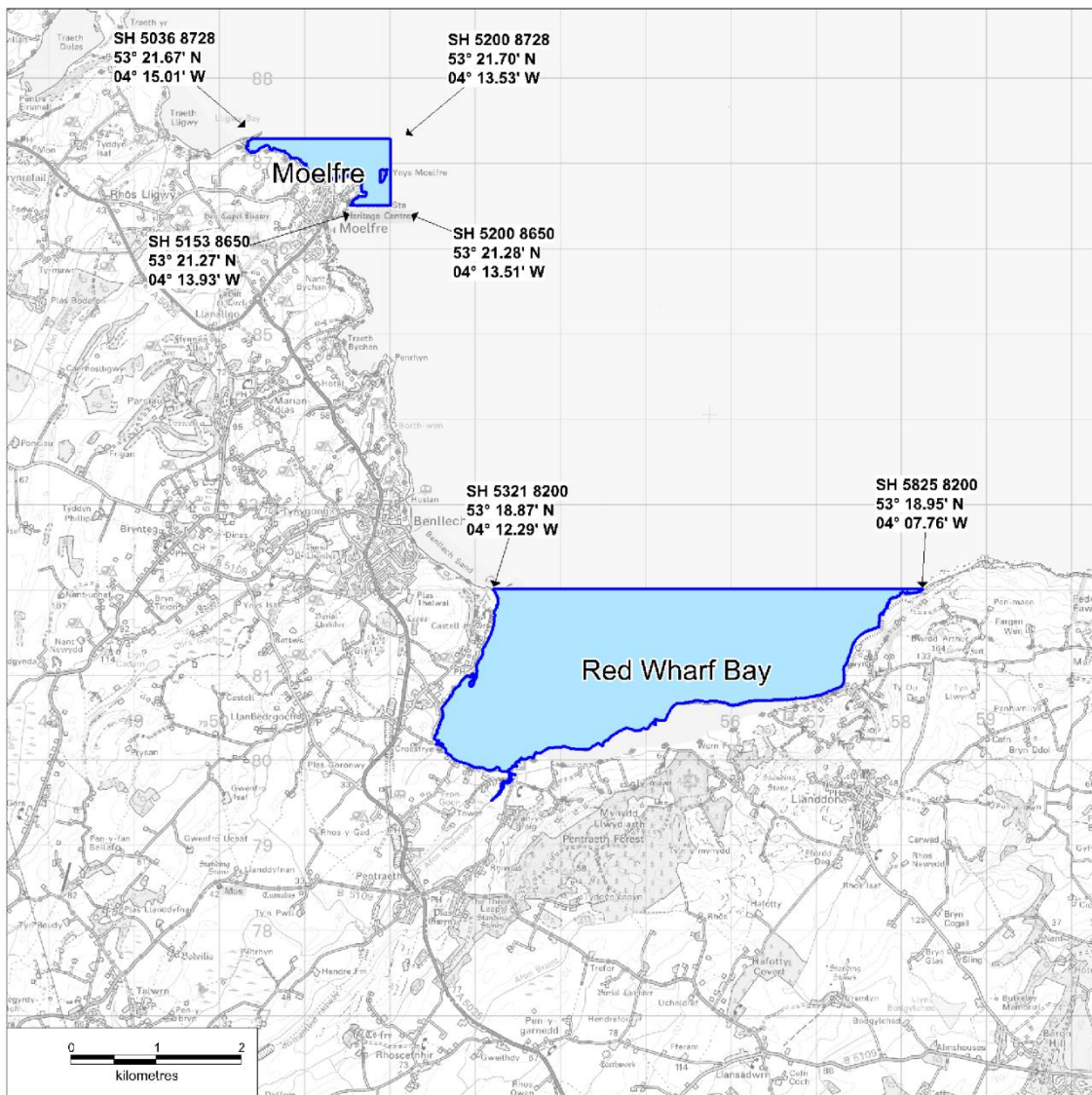
Map as produced by Cefas for the purposes of the
Surface Waters (Shellfish) (Classification) (Amendment) Regulations 2009

© Crown Copyright and Database 2013. All rights reserved.
Ordnance Survey licence number 10000356745

© Hawlfraint a hawliau cronfa ddata'r Goron 2013. Cedwir pob hawl.
Rhif Trwydded yr Arolwg Ordnans 10000356745



Red Wharf Bay, Moelfre - Shellfish Waters



Designated Shellfish Water

The Water Environment
(Water Framework Directive)
(England and Wales) (Amendment)
Regulations 2016

Map as produced by Cefas for the purposes of the
Surface Waters (Shellfish) (Classification) (Amendment) Regulations 2009

© Crown Copyright and Database 2013. All rights reserved.
Ordnance Survey licence number 10000356745

© Hawlfraint a hawliau cronfa ddata'r Goron 2013. Cedwir pob hawl.
Rhif Trwydded yr Arolwg Ordnans 10000356745

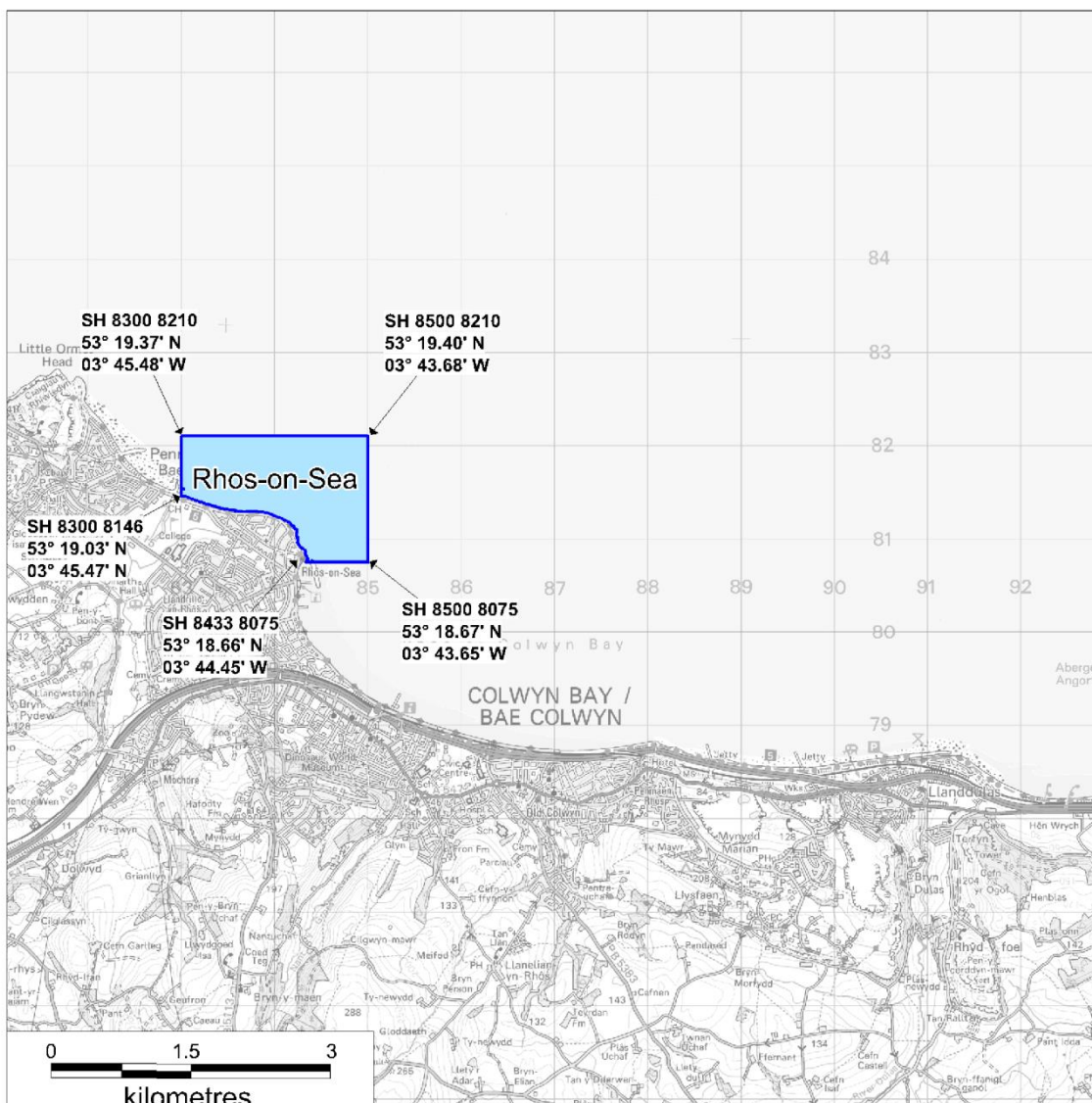


Llywodraeth Cymru
Welsh Government

Cyfoeth
Naturiol
Cymru
Natural
Resources
Wales



Rhos-on-Sea - Shellfish Water



Designated Shellfish Water

The Water Environment
(Water Framework Directive)
(England and Wales) (Amendment)
Regulations 2016

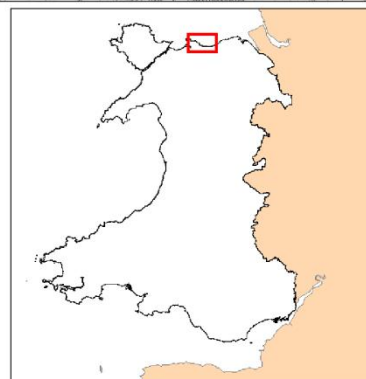
Map as produced by Cefas for the purposes of the
Surface Waters (Shellfish) (Classification) (Amendment) Regulations 2009

© Crown Copyright and Database 2013. All rights reserved.
Ordnance Survey licence number 10000356745

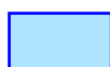
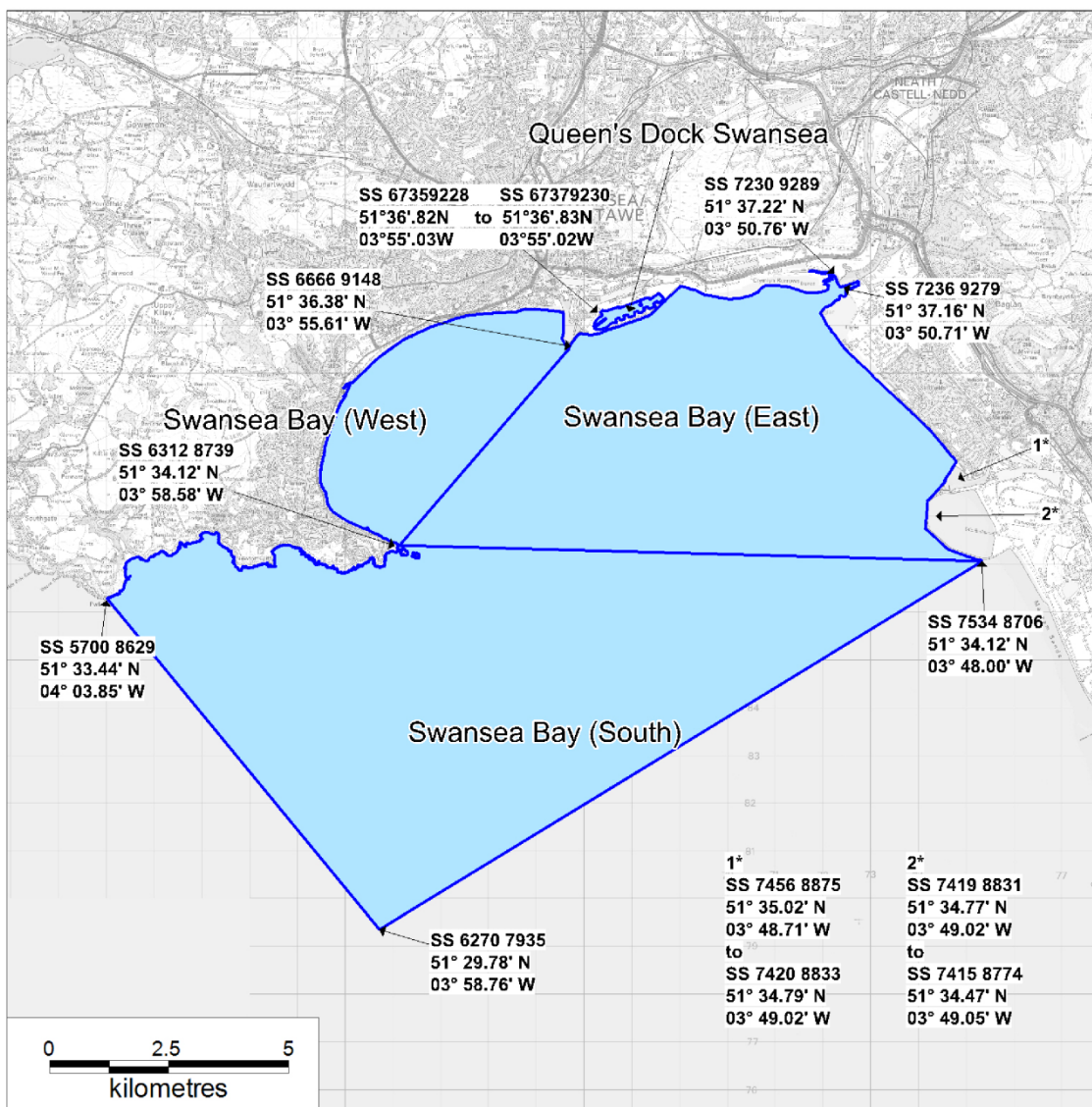
© Hawlfraint a hawliau cronfa ddata'r Goron 2013. Cedwir pob hawl.
Rhif Trwydded yr Arolwg Ordnans 10000356745



Llywodraeth Cymru
Welsh Government



Swansea Bay (East), Swansea Bay (South) Swansea Bay (West), Queen's Dock Swansea - Shellfish Waters



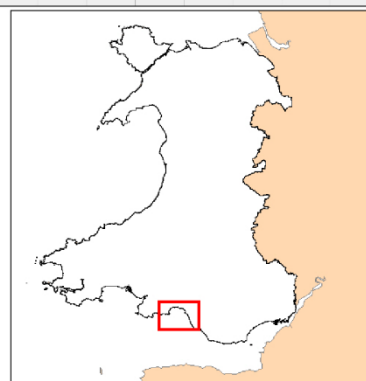
Designated Shellfish Water

The Water Environment
(Water Framework Directive)
(England and Wales) (Amendment)
Regulations 2016

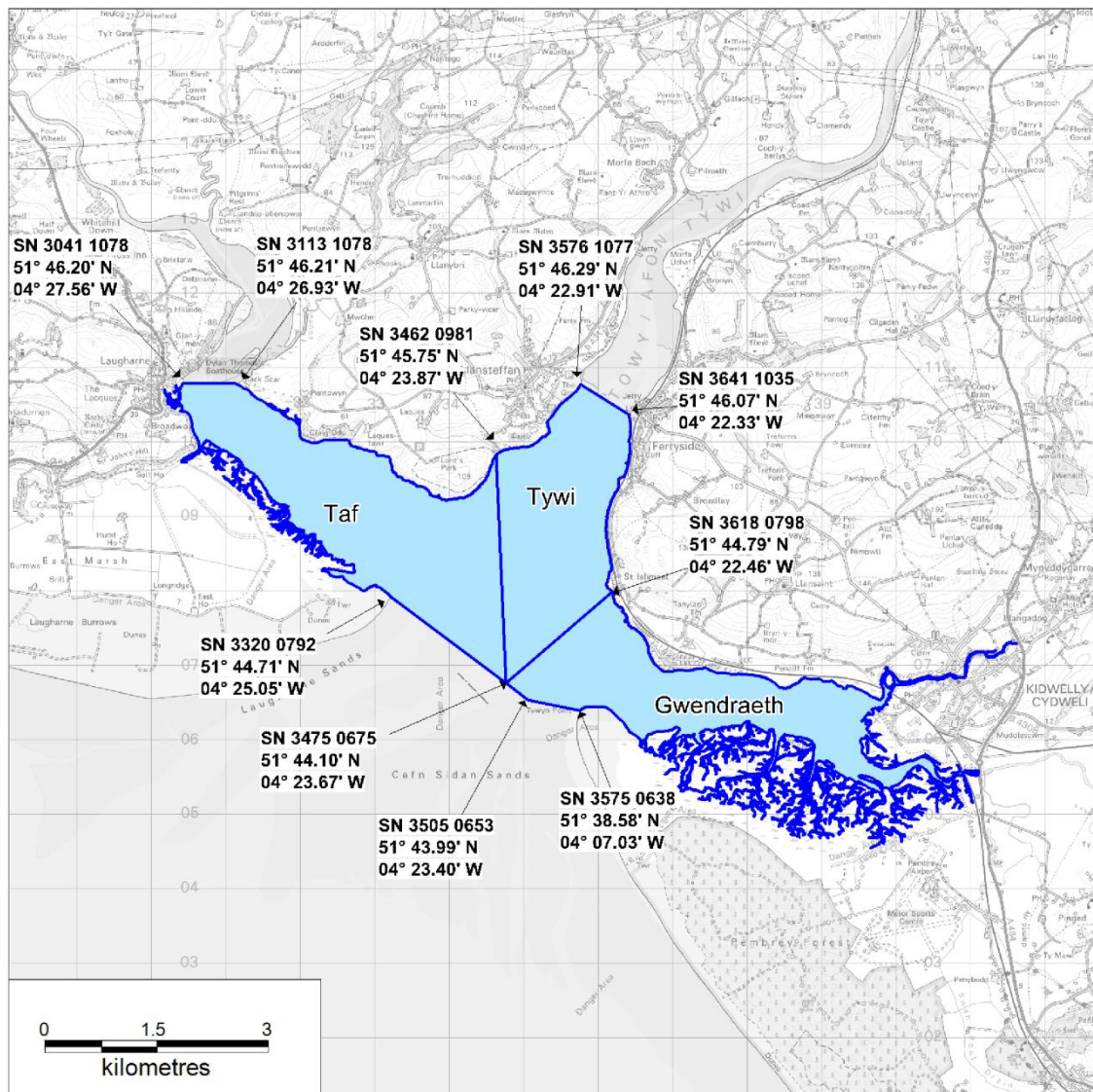
Map as produced by Cefas for the purposes of the
Surface Waters (Shellfish) (Classification) (Amendment) Regulations 2009

© Crown Copyright and Database 2013. All rights reserved.
Ordnance Survey licence number 10000356745

© Hawlfraint a hawliau cronfa ddata'r Goron 2013. Cedwir pob hawl.
Rhif Trwydded yr Arolwg Ordnans 10000356745



Gwendraeth, Tywi, Taf - Shellfish Waters



Designated Shellfish Water

The Water Environment
(Water Framework Directive)
(England and Wales) (Amendment)
Regulations 2016

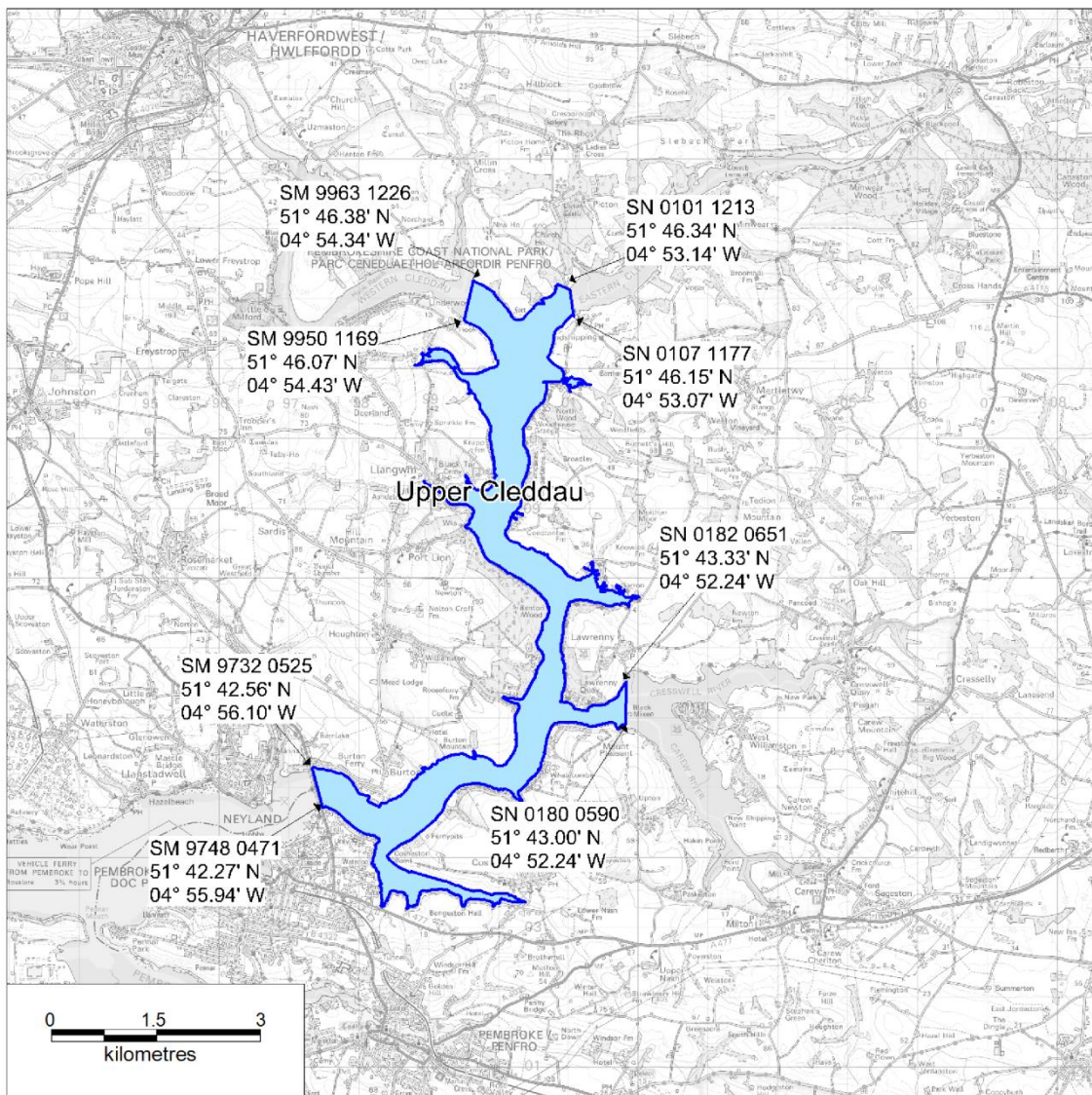
Map as produced by Cefas for the purposes of the
Surface Waters (Shellfish) (Classification) (Amendment) Regulations 2009

© Crown Copyright and Database 2013. All rights reserved.
Ordnance Survey licence number 10000356745

© Hawlfraint a hawliau cronfa ddata'r Goron 2013. Cedwir pob hawl.
Rhif Trwydded yr Arolwg Ordnans 10000356745



Upper Cleddau - Shellfish Water



The Water Environment
(Water Framework Directive)
(England and Wales) (Amendment)
Regulations 2016

Map as produced by Cefas for the purposes of the
Surface Waters (Shellfish) (Classification) (Amendment) Regulations 2009

© Crown Copyright and Database 2013. All rights reserved.
Ordnance Survey licence number 10000356745

© Hawlfraint a hawliau cronfa ddata'r Goron 2013. Cedwir pob hawl.
Rhif Trwydded yr Arolwg Ordnans 10000356745

