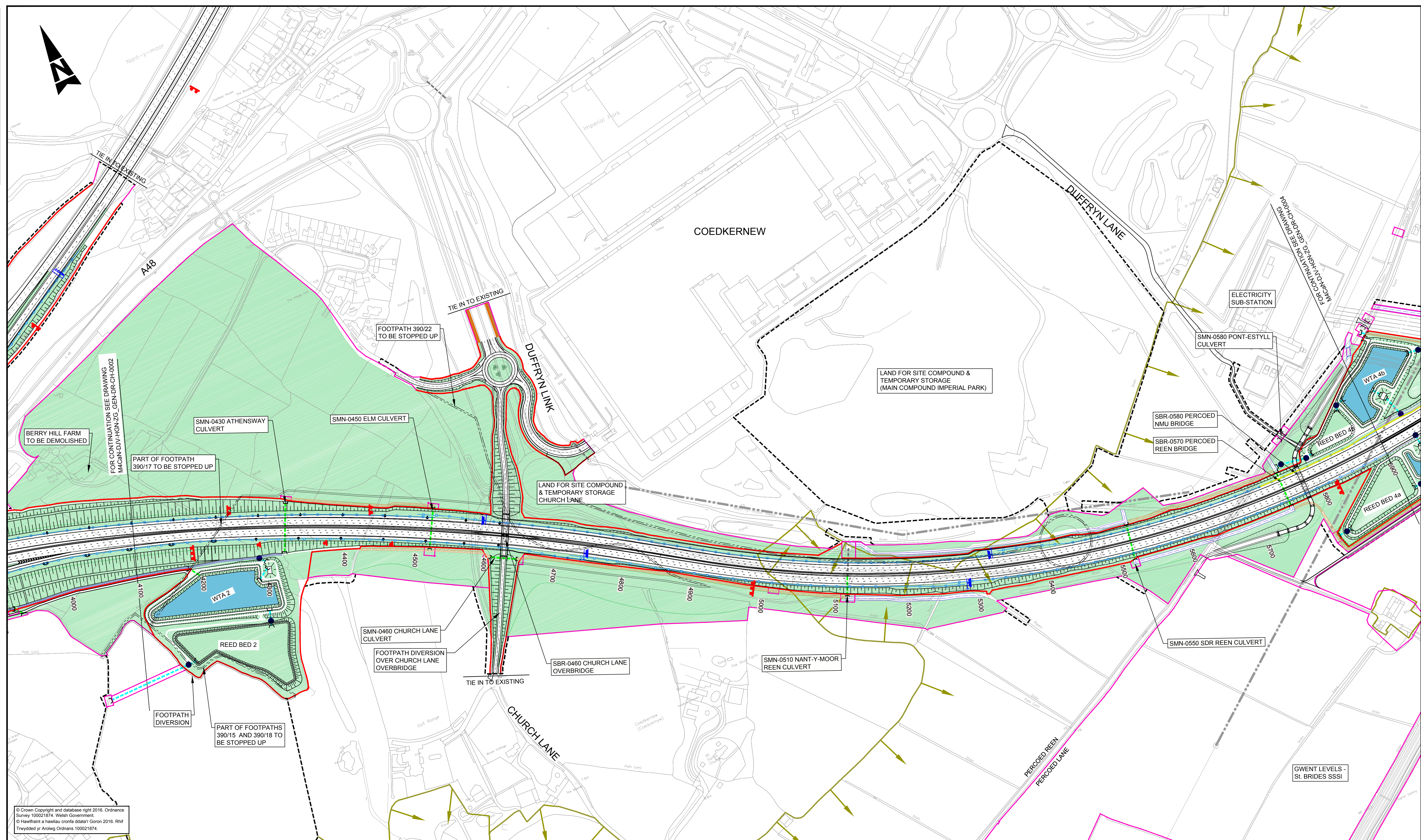


DO NOT SCALE

Millimetres

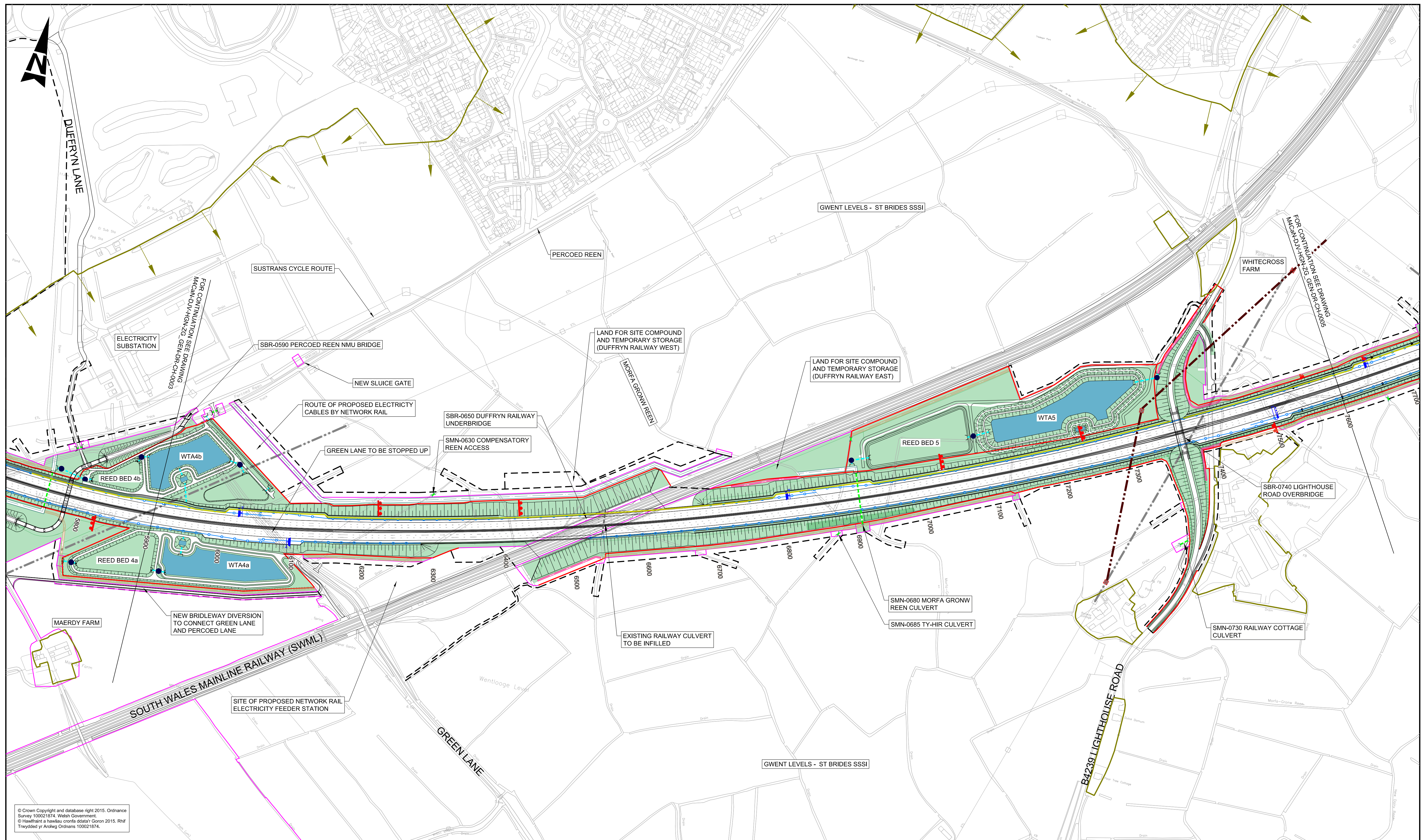
0 10 100

[illegible]

DO NOT SCALE

Millimetres

0 10 100



© Crown Copyright and database right 2015. Ordnance Survey 100021874. Welsh Government.
© Hawffraint a hawliau cronfa ddata'r Goron 2015. Rhif Trwydded yr Arolwg Ordans 100021874.

LEGEND:

	HIGHWAY BOUNDARY		ITS - MS4 GANTRY
	CPO BOUNDARY		ITS - SIGNAL GANTRY
	SITE EXTENTS (LICENSE OR EASEMENT)		SIGN
	P.R.O.W - STOPPED UP		SIGN GANTRY
	P.R.O.W - DIVERTED/NEW		REPLACEMENT REEN
	EXISTING CULVERT		REPLACEMENT FIELD DITCH
	PROPOSED CULVERT		CUT-OFF DITCH
	EXISTING OVERHEAD POWER LINES		LIGHTING COLUMN - SINGLE
	DIVERTED OVERHEAD POWER LINES		LIGHTING COLUMN - DOUBLE
	PROPOSED PYLONS		VEHICLE RESTRAINING SYSTEM (VRS)
	SSSI		PROPOSED LANDSCAPING (REFER TO DRAWINGS M4CaN-DJV-ELS-ZG_GEN-DR-EN-0001 TO 0016)
	HIGHWAY DRAINAGE		WATER TREATMENT AREAS
	HP GAS MAIN		NOISE BARRIER

KEY PLAN:

GENERAL NOTES:

- ALL DIMENSIONS ARE IN METRES UNLESS NOTED OTHERWISE.
- ONLY WRITTEN DIMENSIONS SHALL BE USED. DO NOT SCALE.
- FOR MAINTENANCE ACCESS AND RIGHTS OF ACCESS. REFER TO DRAWINGS M4CaN-DJV-LSI-ZG_GEN-DR-YL-0031 TO M4CaN-DJV-LSI-ZG_GEN-DR-YL-0046.

SAFETY, HEALTH AND ENVIRONMENTAL INFORMATION

In addition to the hazards/risks normally associated with the types of work detailed on this drawing, note the following significant residual risks (Reference shall also be made to the design hazard log).


Construction
No exceptional risks identified at this scale, refer to detailed drawings for specific hazard warnings

Maintenance / Cleaning
No exceptional risks identified at this scale, refer to detailed drawings for specific hazard warnings

Use	No exceptional risks identified at this scale, refer to detailed drawings for specific hazard warnings
-----	--

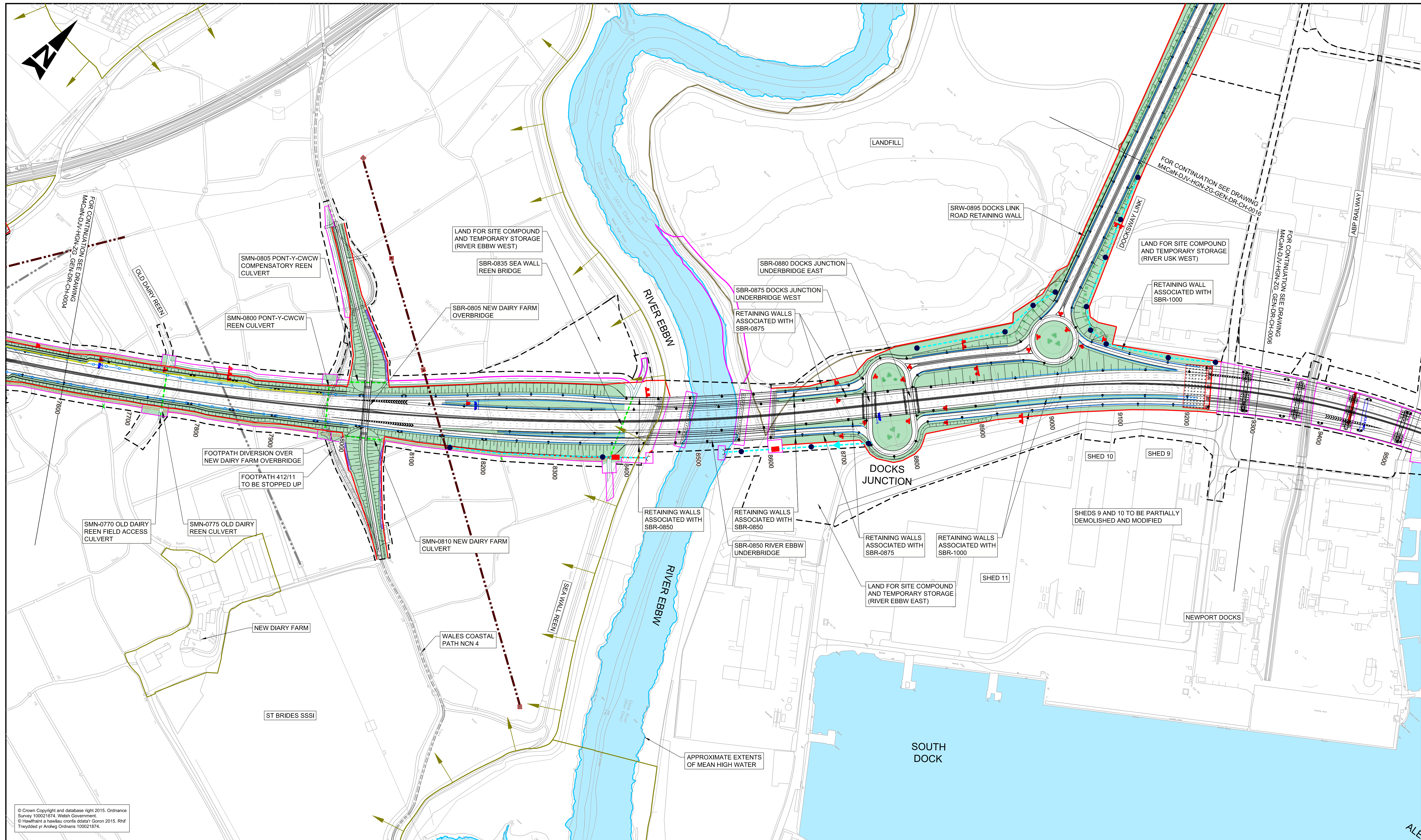
Decommissioning / Demolition
No exceptional risks identified at this scale, refer to detailed drawings for specific hazard warnings

[illegible]

Drawing Status		Suitability		Project Title									
				M4 CORRIDOR AROUND NEWPORT									
Project Team				Drawing Title									
				FIGURE 2.4 GENERAL ARRANGEMENT SHEET 4 OF 16									
Client				Scale		Designed / Drawn		Checked		Approved		Authorised	
				1:2500		HDJ		AJJ		BCS		BCS	
				Original Size		Date		Date		Date		Date	
				A1		04/02/16		04/02/16		04/02/16		04/02/16	
 Llywodraeth Cymru Welsh Government				Drawing Number		Project		Originator		Volume		Revision	
								M4CaN - DJV - HGN -					
								ZG_GEN - DR - CH - 0004					
				Location		Type		Role		Number		AT ISSUE	

DO NOT SCALE

0 10 100
Millimetres



© Crown Copyright and database right 2015. Ordnance Survey 100021874. Welsh Government.
© Havrefnaint a hawlau cronfa ddata? Goron 2015. Rhif Trefyddid y'r Ardalw Cymruans 100021874.

LEGEND:

- HIGHWAY BOUNDARY
- CPO BOUNDARY
- SITE EXTENTS (LICENSE OR EASEMENT)
- P.R.O.W - STOPPED UP
- P.R.O.W - DIVERTED/NEW
- EXISTING CULVERT
- PROPOSED CULVERT
- EXISTING OVERHEAD POWER LINES
- DIVERTED OVERHEAD POWER LINES
- PROPOSED PYLONS
- SSSI
- HIGHWAY DRAINAGE
- HP GAS MAIN

KEY PLAN:

GENERAL NOTES:

- ALL DIMENSIONS ARE IN METRES UNLESS NOTED OTHERWISE.
- ONLY WRITTEN DIMENSIONS SHALL BE USED. DO NOT SCALE.
- FOR MAINTENANCE ACCESS AND RIGHTS OF ACCESS, REFER TO DRAWINGS M4CaN-DJV-LSI-ZG_GEN-DR-YL-0031 TO M4CaN-DJV-LSI-ZG_GEN-DR-YL-0046.

ITS - MS4 GANTRY

- SIGN - SIGNAL GANTRY
- SIGN GANTRY
- REPLACEMENT REEN
- REPLACEMENT FIELD DITCH
- CUT-OFF DITCH
- LIGHTING COLUMN - SINGLE
- LIGHTING COLUMN - DOUBLE
- VEHICLE RESTRAINING SYSTEM (VRS)
- WATER TREATMENT AREAS
- NOISE BARRIER

SAFETY, HEALTH AND ENVIRONMENTAL INFORMATION

In addition to the hazards/risks normally associated with the types of work detailed on this drawing, note the following significant residual risks (Reference shall also be made to the design hazard log).

Construction	Contamination in landfill
Maintenance / Cleaning	Contamination in landfill
Use	Contamination in landfill
Decommissioning / Demolition	Contamination in landfill

Issue	04/02/16	FINAL ISSUE TO WG	HDJ	AJJ	BCS
Rev.	Date	Description	By	Chk'd	App'd

Drawing Status

Project Team

Client

Suitability

Project Title

Drawing Title

Scale

Original Size

Drawing Number

M4 CORRIDOR AROUND NEWPORT

FIGURE 2.4 GENERAL ARRANGEMENT

SHEET 5 OF 16

1:2500

A1

Project

Originator

Volume

M4CaN - DJV - HGN - ZG_GEN - DR - CH - 0005

AT ISSUE

Designed / Drawn

Checked

Approved

Authorised

Date

Date

Date

Date

04/02/16

04/02/16

04/02/16

04/02/16

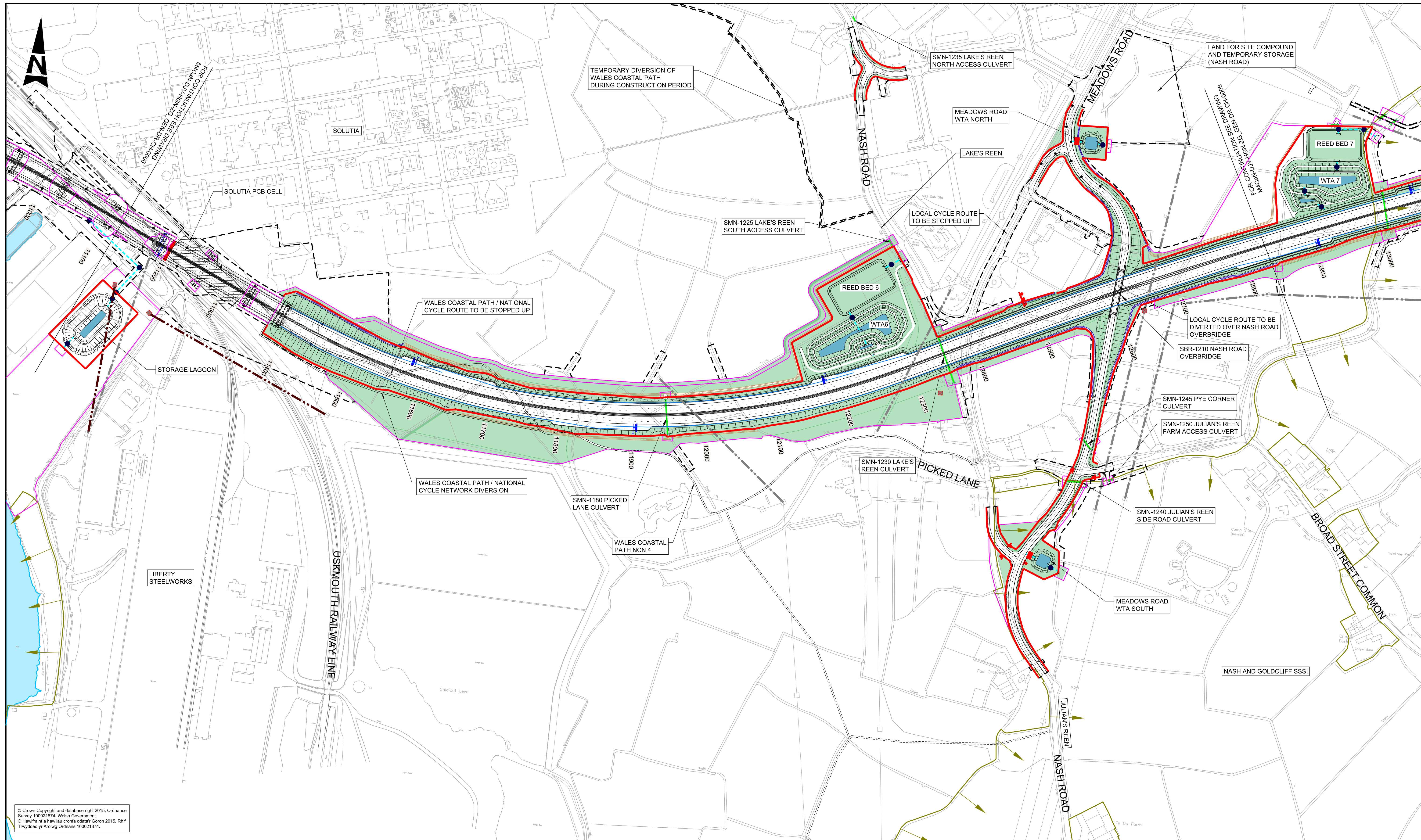
Llywodraeth Cymru

Welsh Government

DO NOT SCALE

Millimetres

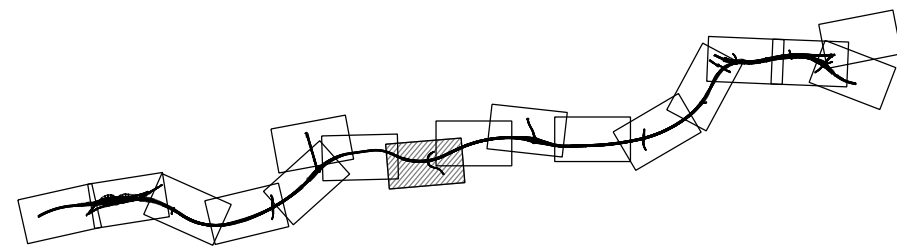
0 10 100



© Crown Copyright and database right 2015. Ordnance Survey 100021874. Welsh Government.
© Hysgraffiadau a hysgraffiadau corfforaidd 2015. Rhif Treiglwydd y'r Arwydd Cymraeg 100021874.

LEGEND:	
HIGHWAY BOUNDARY	ITS - M54 GANTRY
CPO BOUNDARY	ITS - SIGNAL GANTRY
SITE EXTENTS (LICENSE OR EASEMENT)	SIGN
P.R.O.W. - STOPPED UP	SIGN GANTRY
P.R.O.W. - DIVERTED/NEW	REPLACEMENT REEN
EXISTING CULVERT	REPLACEMENT FIELD DITCH
PROPOSED CULVERT	CUT-OFF DITCH
EXISTING OVERHEAD POWER LINES	LIGHTING COLUMN - SINGLE
DIVERTED OVERHEAD POWER LINES	LIGHTING COLUMN - DOUBLE
PROPOSED PYLONS	VEHICLE RESTRAINING SYSTEM (VRS)
SSSI	PROPOSED LANDSCAPING (REFER TO DRAWINGS M4CaN-DJV-LSI-ZG_GEN-DR-YL-0031 TO M4CaN-DJV-LSI-ZG_GEN-DR-YL-0046)
HIGHWAY DRAINAGE	WATER TREATMENT AREAS
HP GAS MAIN	NOISE BARRIER

KEY PLAN:



GENERAL NOTES:

- ALL DIMENSIONS ARE IN METRES UNLESS NOTED OTHERWISE.
- ONLY WRITTEN DIMENSIONS SHALL BE USED. DO NOT SCALE.
- FOR MAINTENANCE ACCESS AND RIGHTS OF ACCESS, REFER TO DRAWINGS M4CaN-DJV-LSI-ZG_GEN-DR-YL-0031 TO M4CaN-DJV-LSI-ZG_GEN-DR-YL-0046.

SAFETY, HEALTH AND ENVIRONMENTAL INFORMATION

In addition to the hazards/risks normally associated with the types of work detailed on this drawing, note the following significant residual risks (Reference shall also be made to the design hazard log).


Construction
Substances hazardous to health in Solutia PCB cell

Maintenance / Cleaning
Substances hazardous to health in Solutia PCB cell

Use
Substances hazardous to health in Solutia PCB cell

Decommissioning / Demolition
Substances hazardous to health in Solutia PCB cell

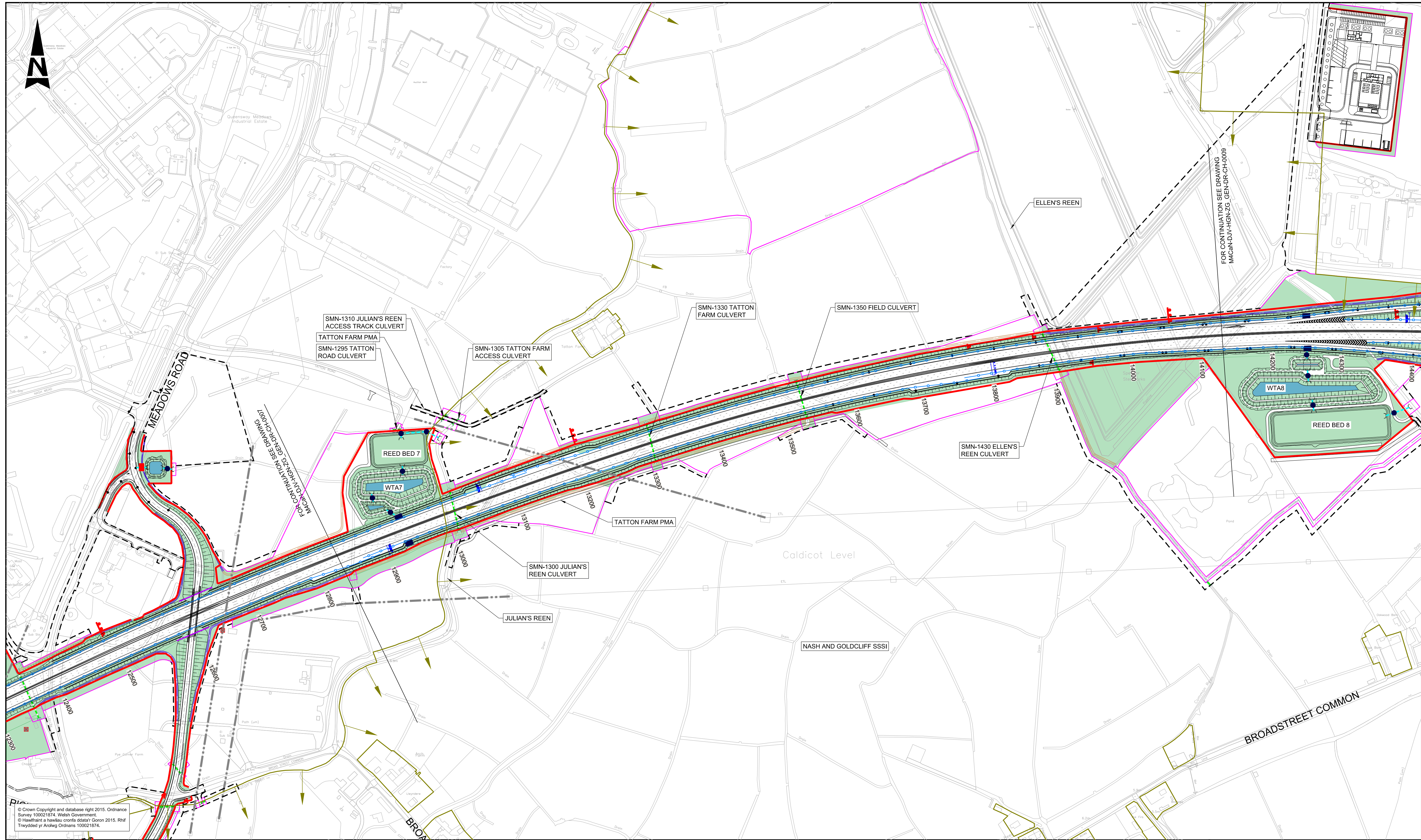
Issue	04/02/16	FINAL ISSUE TO WG	HDJ	AJJ	BCS
Rev.	Date	Description	By	Chk'd	App'd

Drawing Status		Suitability		Project Title				
				M4 CORRIDOR AROUND NEWPORT				
Project Team				Drawing Title				
				FIGURE 2.4 GENERAL ARRANGEMENT SHEET 7 OF 16				
Client				Scale	Designed / Drawn	Checked	Approved	Authorised
				1:2500	HDJ	AJJ	BCS	BCS
				Original Size	Date	Date	Date	Date
 Llywodraeth Cymru Welsh Government				A1	04/02/16	04/02/16	04/02/16	04/02/16
				Drawing Number	Project	Originator	Volume	Revision
				M4CaN - DJV - HGN - ZG_GEN - DR - CH - 0007				AT ISSUE
				Location	Type	Role	Number	



DO NOT SCALE

0 10 100
Millimetres



© Crown Copyright and database right 2015. Ordnance Survey 100021874. Welsh Government.
© Hysgraffiadau a hawliau corfforaidd 2015. Rhif Trefnyddiol y'r Ardal Cymru 100021874.

LEGEND:

- HIGHWAY BOUNDARY
- CPO BOUNDARY
- SITE EXTENTS (LICENSE OR EASEMENT)
- P.R.O.W - STOPPED UP
- P.R.O.W - DIVERTED/NEW
- EXISTING CULVERT
- PROPOSED CULVERT
- EXISTING OVERHEAD POWER LINES
- DIVERTED OVERHEAD POWER LINES
- PROPOSED PYLONS
- SSSI
- HIGHWAY DRAINAGE
- HP GAS MAIN

KEY PLAN:

GENERAL NOTES:

- ALL DIMENSIONS ARE IN METRES UNLESS NOTED OTHERWISE.
- ONLY WRITTEN DIMENSIONS SHALL BE USED. DO NOT SCALE.
- FOR MAINTENANCE ACCESS AND RIGHTS OF ACCESS, REFER TO DRAWINGS M4CaN-DJV-LSI-ZG_GEN-DR-YL-0031 TO M4CaN-DJV-LSI-ZG_GEN-DR-YL-0046.

ITS - M54 GANTRY

- SIGNAL GANTRY
- SIGN GANTRY
- REPLACEMENT REEN
- REPLACEMENT FIELD DITCH
- CUT-OFF DITCH
- LIGHTING COLUMN - SINGLE
- LIGHTING COLUMN - DOUBLE
- VEHICLE RESTRAINING SYSTEM (VRS)
- M4CaN-DJV-LSI-ZG_GEN-DR-YL-0001 TO 0016
- WATER TREATMENT AREAS
- NOISE BARRIER

SAFETY, HEALTH AND ENVIRONMENTAL INFORMATION

In addition to the hazards/risks normally associated with the types of work detailed on this drawing, note the following significant residual risks (Reference shall also be made to the design hazard log).

Construction

No exceptional risks identified at this scale, refer to detailed drawings for specific hazard warnings

Maintenance / Cleaning

No exceptional risks identified at this scale, refer to detailed drawings for specific hazard warnings

Use

No exceptional risks identified at this scale, refer to detailed drawings for specific hazard warnings

Decommissioning / Demolition

No exceptional risks identified at this scale, refer to detailed drawings for specific hazard warnings

Issue	04/02/16	FINAL ISSUE TO WG	HDJ	AJJ	BCS
Rev.	Date	Description	By	Chk'd	App'd

Drawing Status

Project Team

Client

Suitability

Project Title

M4 CORRIDOR AROUND NEWPORT

Drawing Title

FIGURE 2.4 GENERAL ARRANGEMENT
SHEET 8 OF 16

Scale	1:2500	Designed / Drawn	HDJ	Checked	AJJ	Approved	BCS	Authorised	BCS
Original Size	A1	Date	04/02/16	Date	04/02/16	Date	04/02/16	Date	04/02/16
Drawing Number	Project	Originator	M4CaN - DJV - HGN - ZG_GEN - DR - CH - 0008			Volume	Revision		
Location	Type	Role	Number			AT ISSUE			

Llywodraeth Cymru
Welsh Government

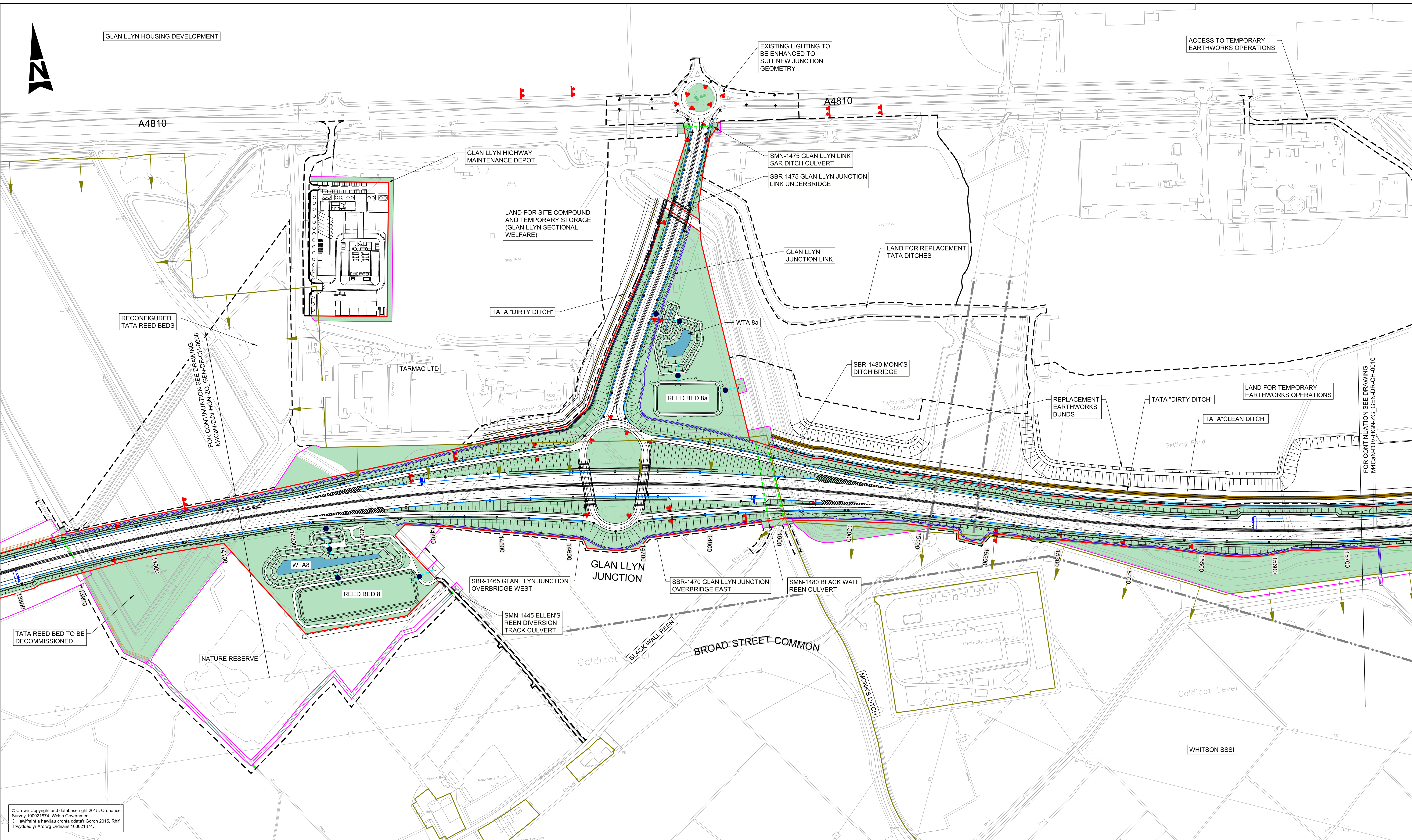
DO NOT SCALE

Millimetres

0

10

100



© Crown Copyright and database right 2015. Ordnance Survey 100021874. Welsh Government.
© Hyswthrïnt a hawliau cronfa ddidata? Goron 2015. Rhif Trefyddid yf Ardwg Ordians 100021874.

LEGEND:

- HIGHWAY BOUNDARY
- CPO BOUNDARY
- SITE EXTENTS (LICENSE OR EASEMENT)
- P.R.O.W - STOPPED UP
- P.R.O.W - DIVERTED/NEW
- EXISTING CULVERT
- PROPOSED CULVERT
- EXISTING OVERHEAD POWER LINES
- DIVERTED OVERHEAD POWER LINES
- PROPOSED PYLONS
- SSSI
- HIGHWAY DRAINAGE
- HP GAS MAIN

KEY PLAN:

GENERAL NOTES:

- ALL DIMENSIONS ARE IN METRES UNLESS NOTED OTHERWISE.
- ONLY WRITTEN DIMENSIONS SHALL BE USED. DO NOT SCALE.
- FOR MAINTENANCE ACCESS AND RIGHTS OF ACCESS, REFER TO DRAWINGS M4CaN-DJV-LSI-ZG_GEN-DR-YL-0031 TO M4CaN-DJV-LSI-ZG_GEN-DR-YL-0046.

ITS - M54 GANTRY

- ITS - SIGNAL GANTRY
- SIGN
- SIGN GANTRY
- REPLACEMENT REEN
- REPLACEMENT FIELD DITCH
- CUT-OFF DITCH
- LIGHTING COLUMN - SINGLE
- LIGHTING COLUMN - DOUBLE
- VEHICLE RESTRAINING SYSTEM (VRS)
- PROPOSED LANDSCAPING (REFER TO DRAWINGS M4CaN-DJV-LSI-ZG_GEN-DR-0001 TO 0016)
- WATER TREATMENT AREAS
- NOISE BARRIER

SAFETY, HEALTH AND ENVIRONMENTAL INFORMATION

In addition to the hazards/risks normally associated with the types of work detailed on this drawing, note the following significant residual risks (Reference shall also be made to the design hazard log).

Construction
No exceptional risks identified at this scale, refer to detailed drawings for specific hazard warnings

Maintenance / Cleaning
No exceptional risks identified at this scale, refer to detailed drawings for specific hazard warnings

Use
No exceptional risks identified at this scale, refer to detailed drawings for specific hazard warnings

Decommissioning / Demolition
No exceptional risks identified at this scale, refer to detailed drawings for specific hazard warnings

Issue	04/02/16	FINAL ISSUE TO WG	HDJ	AJJ	BCS
Rev.	Date	Description	By	Chk'd	App'd

Drawing Status

Project Team

Client

Suitability

Project Title

M4 CORRIDOR AROUND NEWPORT

Drawing Title

FIGURE 2.4 GENERAL ARRANGEMENT
SHEET 9 OF 16

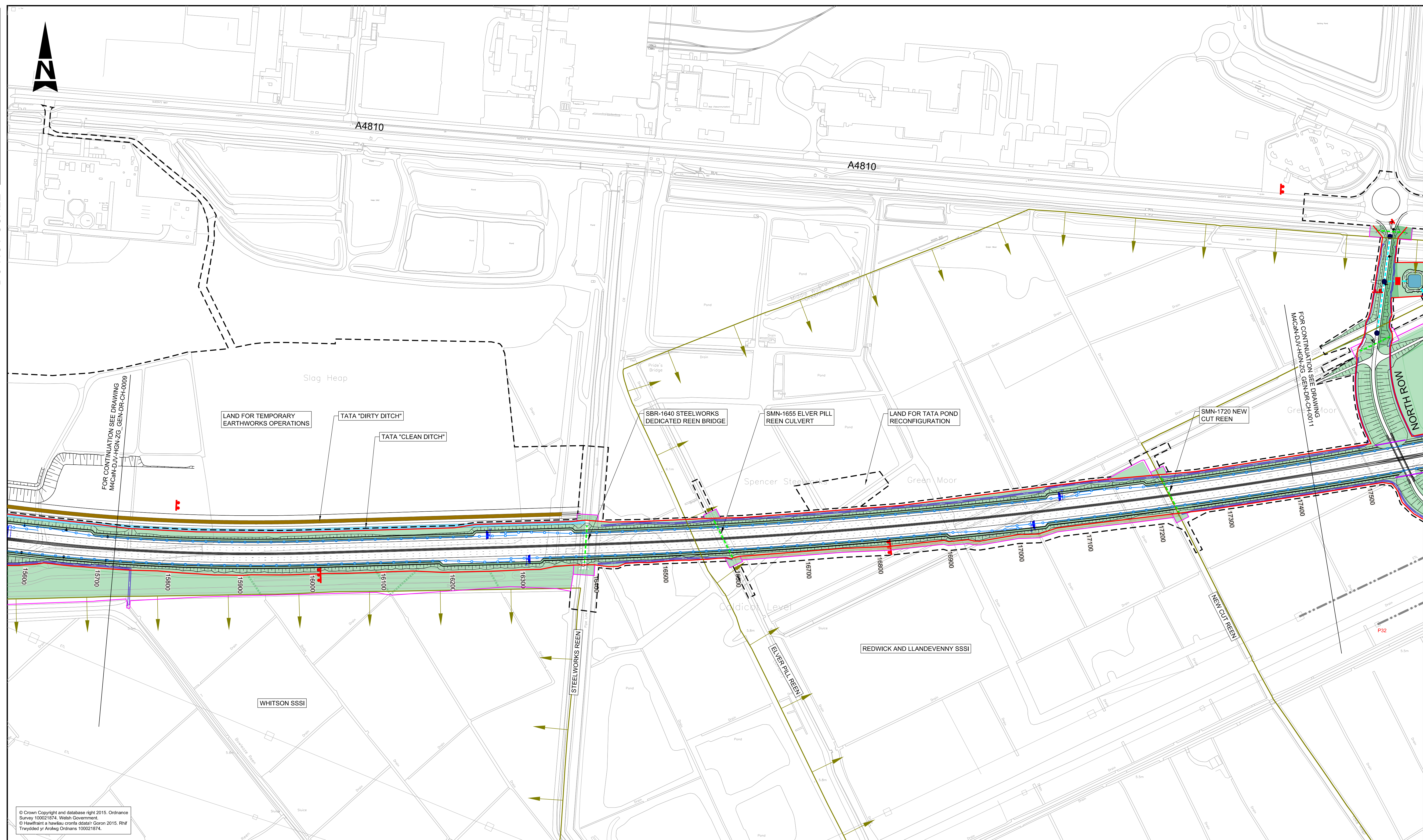
Scale	1:2500	Designed / Drawn	HDJ	Checked	AJJ	Approved	BCS	Authorised	BCS
Original Size	A1	Date	04/02/16	Date	04/02/16	Date	04/02/16	Date	04/02/16
Drawing Number	Project	Originator	M4CaN - DJV - HGN - ZG_GEN - DR - CH - 0009	Volume	AT ISSUE				
Location	Type	Role	Number						

Llywodraeth Cymru
Welsh Government

DO NOT SCALE

Millimetres

0 10 100

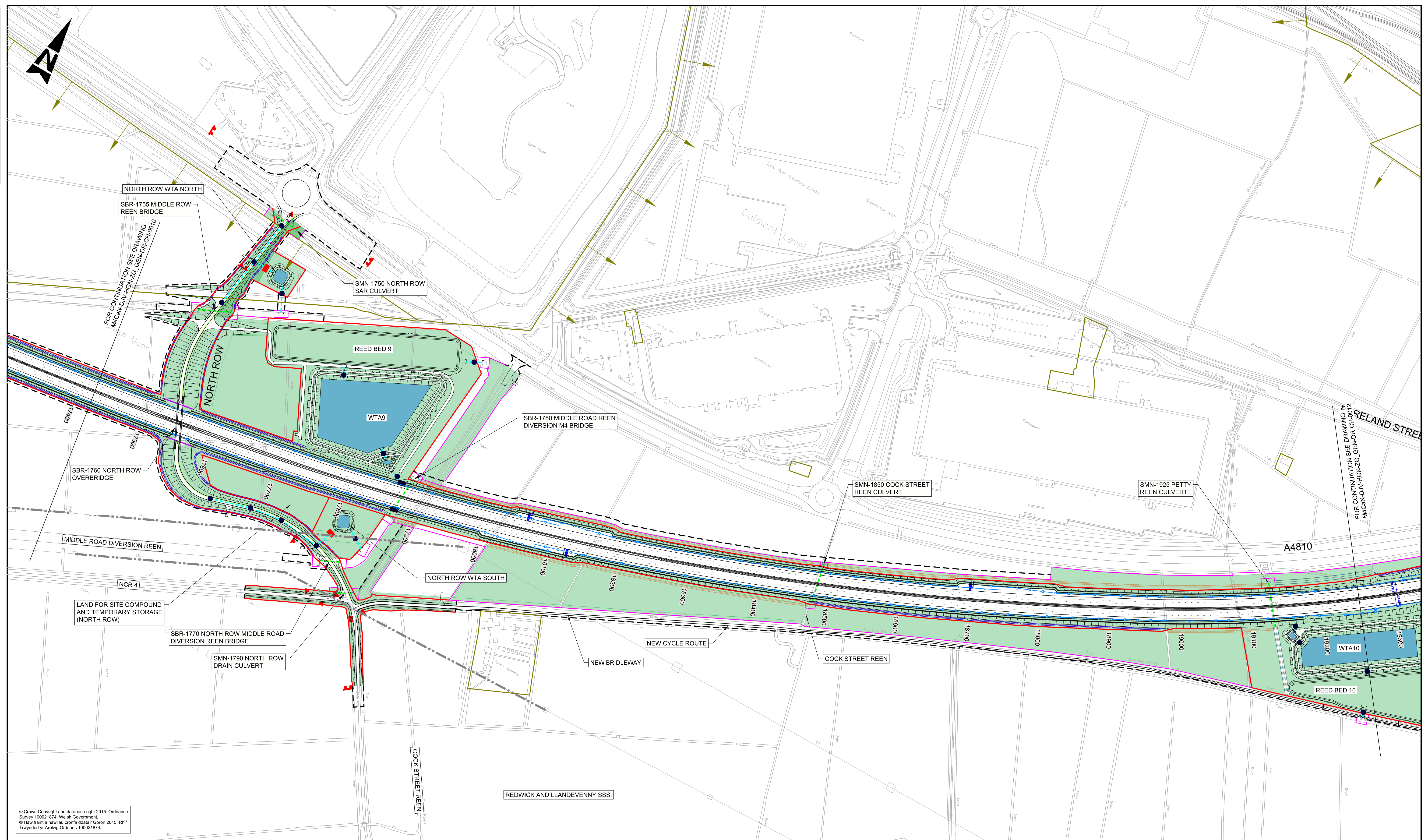


<div><div><div>LEGEND:</div><div><div>—</div> HIGHWAY BOUNDARY</div><div><div>—</div> CPO BOUNDARY</div><div><div>---</div> SITE EXTENTS (LICENSE OR EASEMENT)</div><div><div>==</div> P.R.O.W - STOPPED UP</div><div><div>---</div> P.R.O.W - DIVERTED/NEW</div><div><div>---</div> EXISTING CULVERT</div><div><div>---</div> PROPOSED CULVERT</div><div><div>---</div> EXISTING OVERHEAD POWER LINES</div><div><div>---</div> DIVERTED OVERHEAD POWER LINES</div><div><div>■</div> PROPOSED PYLONS</div><div><div>---</div> SSSI</div><div><div>●</div> HIGHWAY DRAINAGE</div><div><div>—</div> HP GAS MAIN</div></div><div><div></div> ITS - M54 GANTRY</div><div><div></div> ITS - SIGNAL GANTRY</div><div><div></div> SIGN</div><div><div></div> SIGN GANTRY</div><div><div></div> REPLACEMENT REEN</div><div><div></div> REPLACEMENT FIELD DITCH</div><div><div></div> CUT-OFF DITCH</div><div><div></div> LIGHTING COLUMN - SINGLE</div><div><div></div> LIGHTING COLUMN - DOUBLE</div><div><div></div> VEHICLE RESTRAINING SYSTEM (VRS)</div><div><div></div> PROPOSED LANDSCAPING (REFER TO DRAWINGS M4CaN-DJVL-SR-ZG_GEN-DR-0001 TO 0016)</div><div><div></div> WATER TREATMENT AREAS</div><div><div></div> NOISE BARRIER</div></div> <div><div>KEY PLAN:</div></div> <div><div>GENERAL NOTES:</div><div><div>1. ALL DIMENSIONS ARE IN METRES UNLESS NOTED OTHERWISE.</div><div>2. ONLY WRITTEN DIMENSIONS SHALL BE USED. DO NOT SCALE.</div><div>3. FOR MAINTENANCE ACCESS AND RIGHTS OF ACCESS, REFER TO DRAWINGS M4CaN-DJVL-SR-ZG_GEN-DR-YL-0031 TO M4CaN-DJVL-SR-ZG_GEN-DR-YL-0046.</div></div></div>										<div><div>SAFETY, HEALTH AND ENVIRONMENTAL INFORMATION</div><div>In addition to the hazards/risks normally associated with the types of work detailed on this drawing, note the following significant residual risks (Reference shall also be made to the design hazard log).</div><div>Construction</div><div>No exceptional risks identified at this scale, refer to detailed drawings for specific hazard warnings</div><div>Maintenance / Cleaning</div><div>No exceptional risks identified at this scale, refer to detailed drawings for specific hazard warnings</div><div>Use</div><div>No exceptional risks identified at this scale, refer to detailed drawings for specific hazard warnings</div><div>Decommissioning / Demolition</div><div>No exceptional risks identified at this scale, refer to detailed drawings for specific hazard warnings</div></div>										<div><div>Issue</div><div>04/02/16</div><div>FINAL ISSUE TO WG</div><div>By</div><div>HDJ</div><div>AJJ</div><div>BCS</div><div>Rev.</div><div>Date</div><div>Description</div><div>By</div><div>Chk'd</div><div>App'd</div></div>										<div><div>Drawing Status</div><div>Suitability</div><div>Project Title</div><div>M4 CORRIDOR AROUND NEWPORT</div><div>Project Team</div><div>Drawing Title</div><div>FIGURE 2.4 GENERAL ARRANGEMENT</div><div>SHEET 10 OF 16</div><div>Client</div><div></div><div>Llywodraeth Cymru Welsh Government</div><div>Scale</div><div>1:2500</div><div>Designed / Drawn</div><div>HDJ</div><div>Checked</div><div>AJJ</div><div>Approved</div><div>BCS</div><div>Authorised</div><div>BCS</div><div>Original Size</div><div>A1</div><div>Date</div><div>04/02/16</div><div>Date</div><div>04/02/16</div><div>Date</div><div>04/02/16</div><div>Date</div><div>04/02/16</div><div>Drawing Number</div><div>Project</div><div>Originator</div><div>Volume</div><div>Revision</div><div>M4CaN - DJV - HGN -</div><div>ZG_GEN - DR - 0010</div><div>AT ISSUE</div></div>									
---	--	--	--	--	--	--	--	--	--	--	--	--	--	--	--	--	--	--	--	--	--	--	--	--	--	--	--	--	--	--	--	--	--	--	--	--	--	--	--

DO NOT SCALE

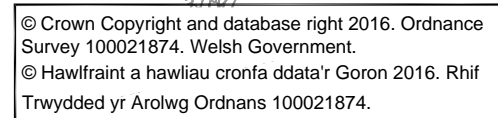
Millimetres

0 10 100



<div>LEGEND:</div> <div><div><div><div><div></div></div><div>HIGHWAY BOUNDARY</div></div><div><div><div></div></div><div>CPO BOUNDARY</div></div><div><div><div><div></div></div><div>SITE EXTENTS (LICENSE OR EASEMENT)</div></div><div><div><div></div></div><div>P.R.O.W - STOPPED UP</div></div><div><div><div></div></div><div>P.R.O.W - DIVERTED/NEW</div></div><div><div><div></div></div><div>EXISTING CULVERT</div></div><div><div><div></div></div><div>PROPOSED CULVERT</div></div><div><div><div></div></div><div>EXISTING OVERHEAD POWER LINES</div></div><div><div><div></div></div><div>DIVERTED OVERHEAD POWER LINES</div></div><div><div><div></div></div><div>PROPOSED PYLONS</div></div><div><div><div></div></div><div>SSSI</div></div><div><div><div></div></div><div>HIGHWAY DRAINAGE</div></div><div><div><div></div></div><div>HP GAS MAIN</div></div></div><div><div><div><div><div></div></div><div>ITS - M54 GANTRY</div></div><div><div><div></div></div><div>ITS - SIGNAL GANTRY</div></div><div><div><div></div></div><div>SIGN</div></div><div><div><div></div></div><div>SIGN GANTRY</div></div><div><div><div></div></div><div>REPLACEMENT REEN</div></div><div><div><div></div></div><div>REPLACEMENT FIELD DITCH</div></div><div><div><div></div></div><div>CUT-OFF DITCH</div></div><div><div><div></div></div><div>LIGHTING COLUMN - SINGLE</div></div><div><div><div></div></div><div>LIGHTING COLUMN - DOUBLE</div></div><div><div><div></div></div><div>VEHICLE RESTRAINING SYSTEM (VRS)</div></div><div><div><div></div></div><div>PROPOSED LANDSCAPING (REFER TO DRAWINGS M4CaN-DJV-ELS-ZG_GEN-DR-EN-0001 TO 0016)</div></div><div><div><div></div></div><div>WATER TREATMENT AREAS</div></div><div><div><div></div></div><div>NOISE BARRIER</div></div></div></div><div><div>KEY PLAN:</div><div></div><div>GENERAL NOTES:</div><div><div>1. ALL DIMENSIONS ARE IN METRES UNLESS NOTED OTHERWISE.</div><div>2. ONLY WRITTEN DIMENSIONS SHALL BE USED. DO NOT SCALE.</div><div>3. FOR MAINTENANCE ACCESS AND RIGHTS OF ACCESS, REFER TO DRAWINGS M4CaN-DJV-L-SI-ZG_GEN-DR-YL-0031 TO M4CaN-DJV-L-SI-ZG_GEN-DR-YL-0046.</div></div></div></div><div><div>SAFETY, HEALTH AND ENVIRONMENTAL INFORMATION</div><div>In addition to the hazards/risks normally associated with the types of work detailed on this drawing, note the following significant residual risks (Reference shall also be made to the design hazard log).</div><div>Construction</div><div>No exceptional risks identified at this scale, refer to detailed drawings for specific hazard warnings</div><div>Maintenance / Cleaning</div><div>No exceptional risks identified at this scale, refer to detailed drawings for specific hazard warnings</div><div>Use</div><div>No exceptional risks identified at this scale, refer to detailed drawings for specific hazard warnings</div><div>Decommissioning / Demolition</div><div>No exceptional risks identified at this scale, refer to detailed drawings for specific hazard warnings</div></div><div><div><div>Issue</div><div>04/02/16</div><div>FINAL ISSUE TO WG</div><div>HDJ</div><div>AJJ</div><div>BCS</div></div><div><div>Rev.</div><div>Date</div><div>Description</div><div>By</div><div>Chk'd</div><div>App'd</div></div></div><div><div><div>Drawing Status</div><div>Suitability</div><div>Project Title</div></div><div><div>Project Team</div><div>Client</div></div><div><div><div>Scale</div><div>1:2500</div></div><div><div>Designed / Drawn</div><div>HDJ</div></div><div><div>Checked</div><div>AJJ</div></div><div><div>Approved</div><div>BCS</div></div><div><div>Authorised</div><div>BCS</div></div></div><div><div><div>Original Size</div><div>A1</div></div><div><div>Date</div><div>04/02/16</div></div><div><div>Date</div><div>04/02/16</div></div><div><div>Date</div><div>04/02/16</div></div><div><div>Date</div><div>04/02/16</div></div></div><div><div><div>Drawing Number</div><div>Project</div></div><div><div>Originator</div><div>Volume</div></div><div><div>Revision</div><div>AT ISSUE</div></div></div><div><div><div><div><div></div></div><div>Llywodraeth Cymru</div><div>Welsh Government</div></div></div></div><div><div><div><div><div></div></div><div>M4 CORRIDOR AROUND NEWPORT</div></div><div><div><div>FIGURE 2.4 GENERAL ARRANGEMENT</div><div>SHEET 11 OF 16</div></div></div><div><div><div><div><div></div></div><div>1:2500</div></div><div><div><div>Designed / Drawn</div><div>HDJ</div></div><div><div><div>Checked</div><div>AJJ</div></div><div><div><div>Approved</div><div>BCS</div></div><div><div><div>Authorised</div><div>BCS</div></div></div></div><div><div><div>Original Size</div><div>A1</div></div><div><div><div>Date</div><div>04/02/16</div></div><div><div><div>Date</div><div>04/02/16</div></div><div><div><div>Date</div><div>04/02/16</div></div><div><div><div>Date</div><div>04/02/16</div></div></div></div><div><div><div>Drawing Number</div><div>Project</div></div><div><div><div>Originator</div><div>Volume</div></div><div><div><div>Revision</div><div>AT ISSUE</div></div></div></div></div></div></div></div></div></div></div></div></div></div></div></div>	
--	--

8



KEY PLAN



- ## SAFETY, HEALTH AND ENVIRONMENTAL INFORMATION

Construction
No exceptional risks identified at this scale, refer to detailed drawings for specific hazard warnings

Maintenance / Cleaning	
------------------------	--


No exceptional risks identified at this scale, refer to detailed drawings for specific hazard warnings

Use	
-----	--

No exceptional risks identified at this scale, refer to detailed drawings for specific hazard warnings

Decommissioning / Demolition

No exceptional risks identified at this scale, refer to detailed drawings for specific hazard warnings

Drawing Status	
Project Team	
Client	 Llywodraeth Cymru Welsh Government

Suitability	Project Title M4 CORRIDOR AROUND NEWPORT				
Drawing Title FIGURE 2.4 GENERAL ARRANGEMENT SHEET 12 OF 16					
Scale 1:2500	Designed / Drawn AJD	Checked CCR	Approved BCS	Authorised BCS	
Original Size A1	Date 04/02/16	Date 04/02/16	Date 04/02/16	Date 04/02/16	
Drawing Number Project M4CaN - DJV/ - HGN - ZG_GEN - DR - CH - 0012				Revision AT ISSUE	

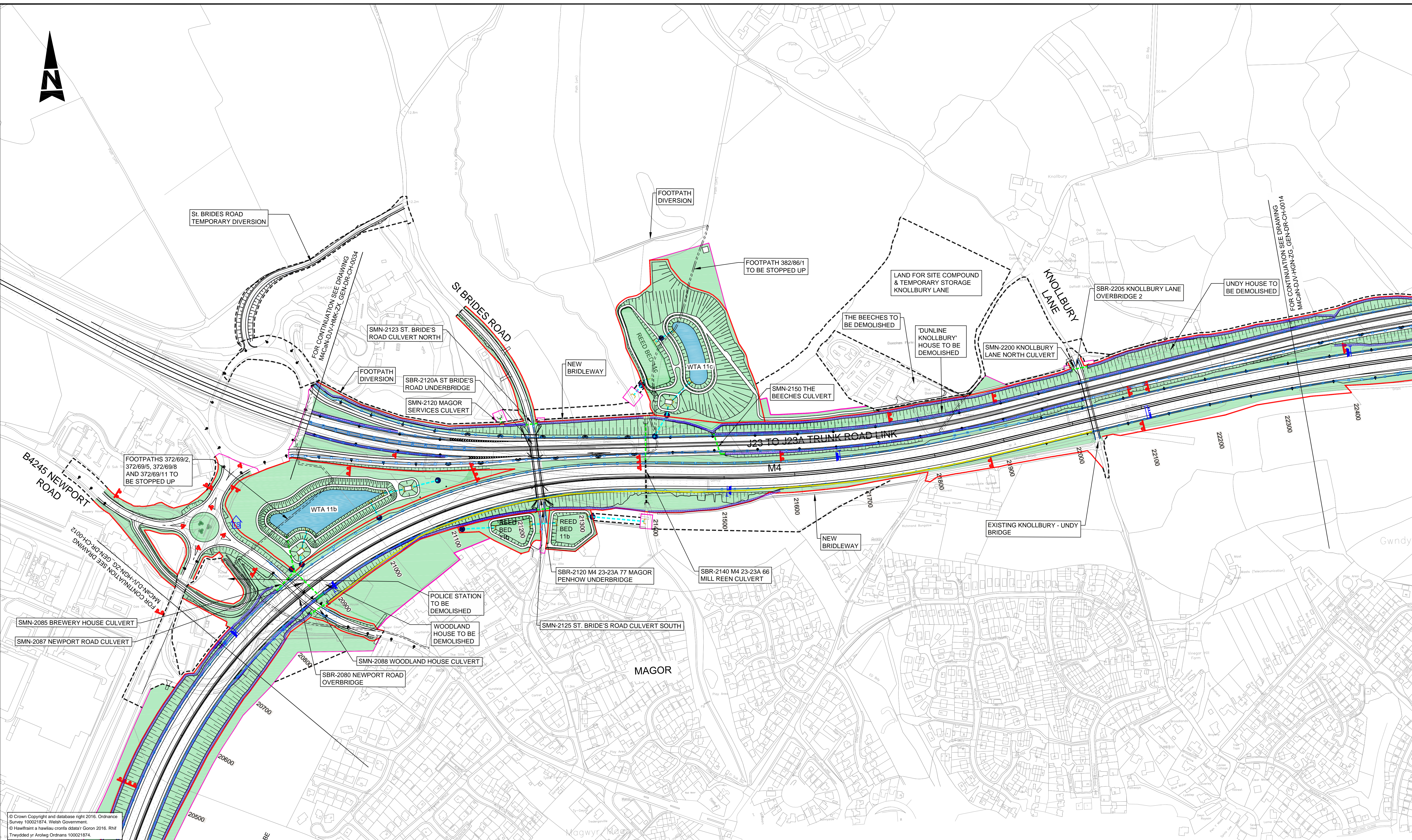
DO NOT SCALE

Millimetres

0

10

100



© Crown Copyright and database right 2016. Ordnance Survey 100021874. Welsh Government.
© Hafwain a hawliau corfforaidd Goron 2016. Rhif Trwydded yr Arolwg Ordnans 100021874.

LEGEND:		KEY PLAN	
	HIGHWAY BOUNDARY		ITS - M4 GANTRY
	CPO BOUNDARY		ITS - SIGNAL GANTRY
	SITE EXTENTS (LICENSE OR EASEMENT)		SIGN
	P.R.O.W - STOPPED UP		SIGN GANTRY
	P.R.O.W - DIVERTED/NEW		REPLACEMENT REEN
	EXISTING CULVERT		REPLACEMENT FIELD DITCH
	PROPOSED CULVERT		CUT-OFF DITCH
	EXISTING OVERHEAD POWER LINES		LIGHTING COLUMN - SINGLE
	DIVERTED OVERHEAD POWER LINES		LIGHTING COLUMN - DOUBLE
	PROPOSED PYLONS		VEHICLE RESTRAINING SYSTEM (VRS)
	SSSI		LANDSCAPING (REFER TO DRAWINGS MACaN-DJV-ELS-ZG_GEN-DR-EN-0001 TO 0016)
	HIGHWAY DRAINAGE		WATER TREATMENT AREAS
	HP GAS MAIN		NOISE BARRIER

SAFETY, HEALTH AND ENVIRONMENTAL INFORMATION

In addition to the hazards/risks normally associated with the types of work detailed on this drawing, note the following significant residual risks (Reference shall also be made to the design hazard log).


Construction
No exceptional risks identified at this scale, refer to detailed drawings for specific hazard warnings

Maintenance / Cleaning
No exceptional risks identified at this scale, refer to detailed drawings for specific hazard warnings

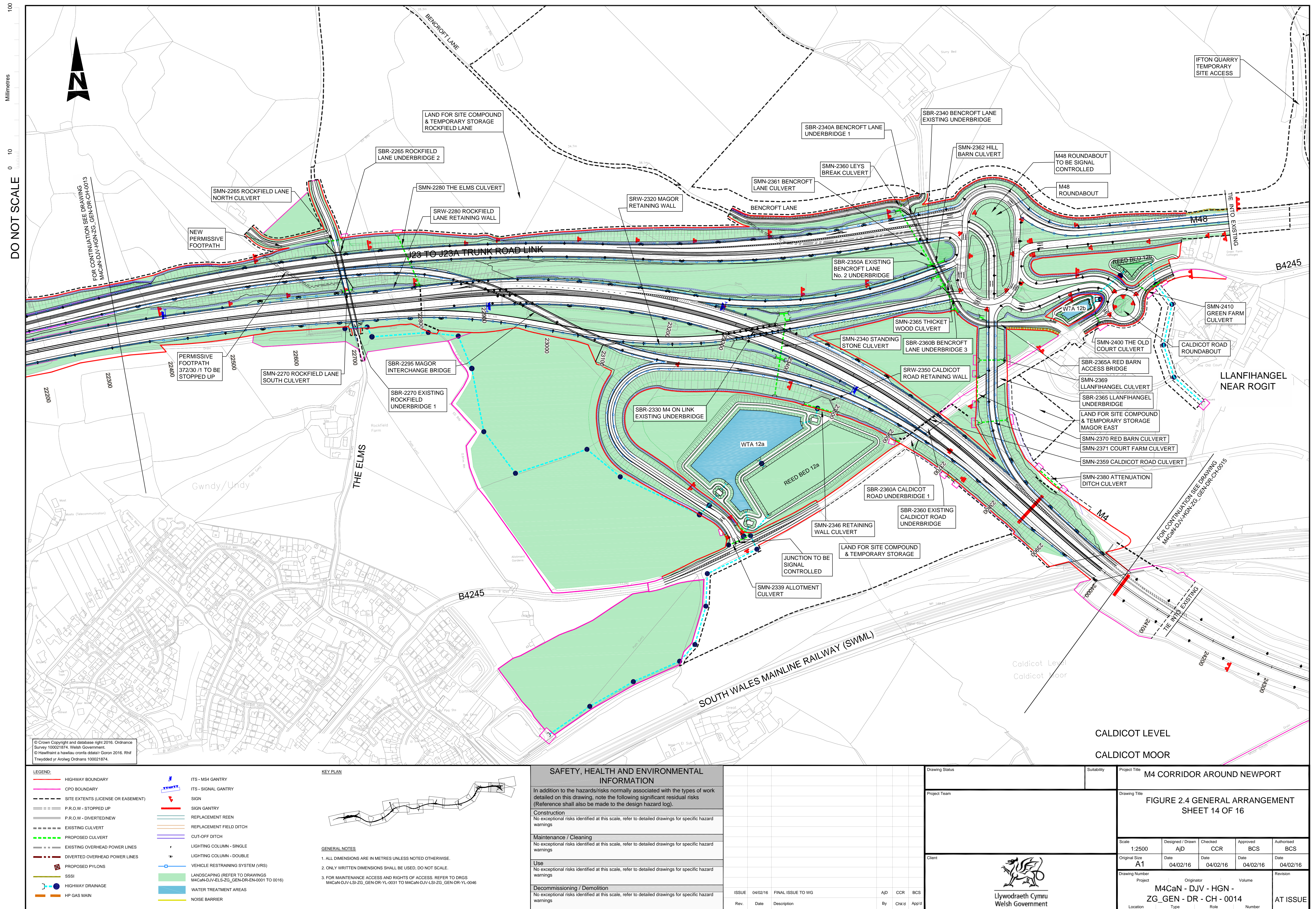
Use
No exceptional risks identified at this scale, refer to detailed drawings for specific hazard warnings

Decommissioning / Demolition
No exceptional risks identified at this scale, refer to detailed drawings for specific hazard warnings

ISSUE	04/02/16	FINAL ISSUE TO WG	AJD	CCR	BCS
Rev.	Date	Description	By	Chk'd	App'd

Drawing Status		M4 CORRIDOR AROUND NEWPORT				
Project Team		Drawing Title FIGURE 2.4 GENERAL ARRANGEMENT SHEET 13 OF 16				
<div> Llywodraeth Cymru Welsh Government</div>		Scale	Designed / Drawn	Checked	Approved	Authorised
		1:2500	AJD	CCR	BCS	BCS
Client		Original Size	Date	Date	Date	Date
		A1	04/02/16	04/02/16	04/02/16	04/02/16
		Drawing Number	Originator			Revision
		Project	Volume			
		M4CaN - DJV - HGN - ZG_GEN - DR - CH - 0013				
		Location	Type	Role	Number	AT ISSUE





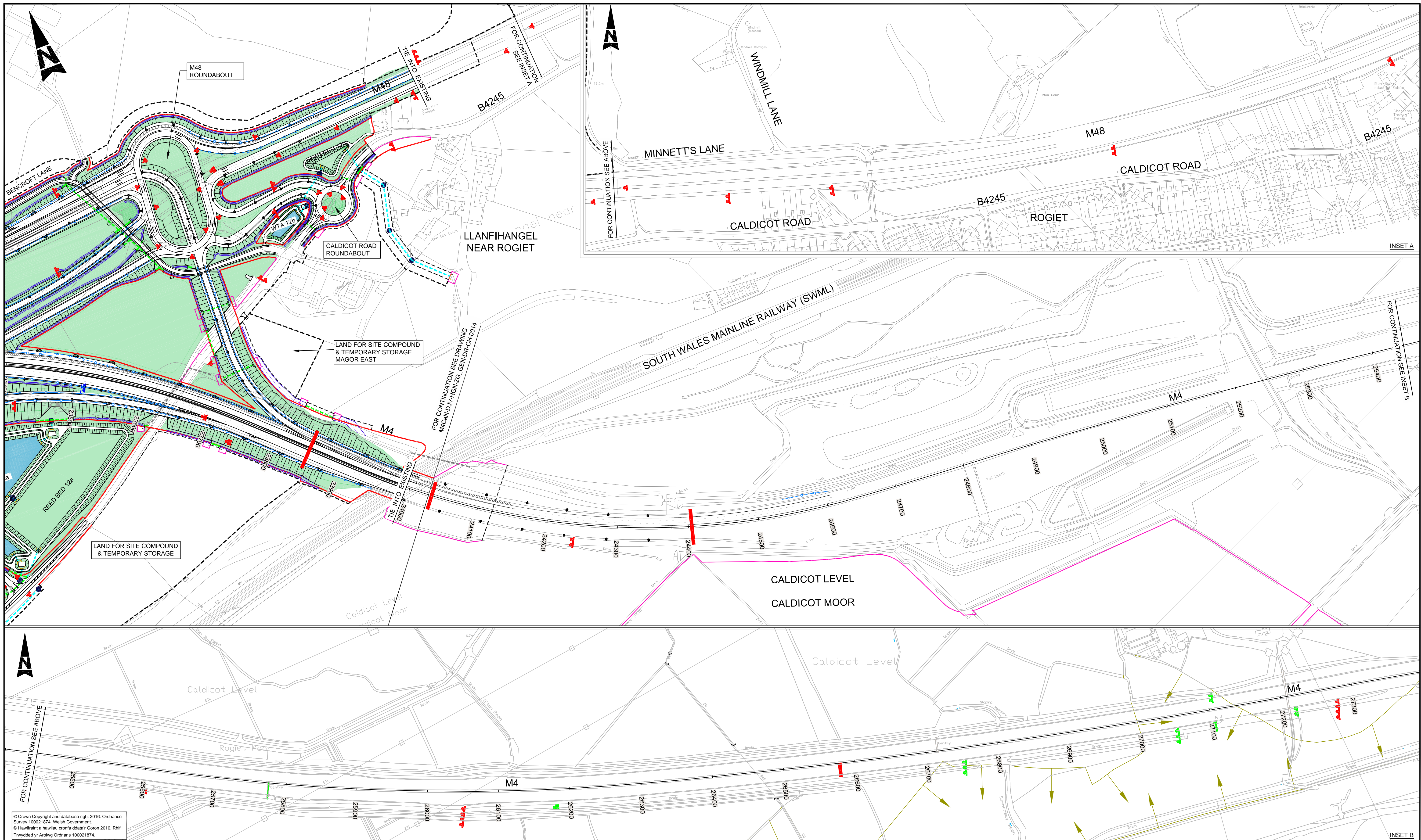
DO NOT SCALE

Millimetres

0

10

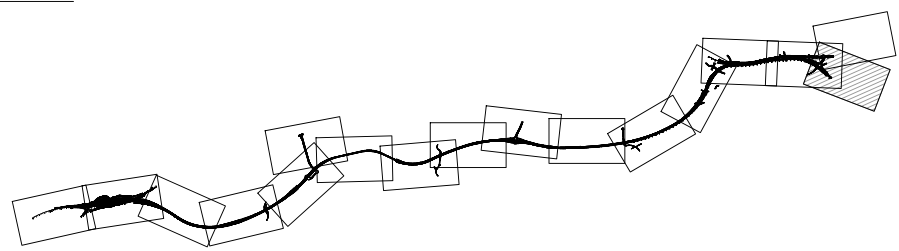
100



© Crown Copyright and database right 2016. Ordnance Survey 100021874. Welsh Government.
© Haulfryn a hawlfryn corff ddisgyn Goron 2016. Rhif Trewydded yr Arolwg Ordnans 100021874.

- LEGEND:**
- HIGHWAY BOUNDARY
 - CPO BOUNDARY
 - - - SITE EXTENTS (LICENSE OR EASEMENT)
 - - - P.R.O.W - STOPPED UP
 - - - P.R.O.W - DIVERTED/NEW
 - - - EXISTING CULVERT
 - - - PROPOSED CULVERT
 - - - EXISTING OVERHEAD POWER LINES
 - - - DIVERTED OVERHEAD POWER LINES
 - PROPOSED PYLONS
 - SSSI
 - HIGHWAY DRAINAGE
 - HP GAS MAIN
 - ITS - M4 GANTRY
 - ITS - SIGNAL GANTRY
 - SIGN
 - SIGN GANTRY
 - REPLACEMENT REEN
 - REPLACEMENT FIELD DITCH
 - CUT-OFF DITCH
 - LIGHTING COLUMN - SINGLE
 - LIGHTING COLUMN - DOUBLE
 - VEHICLE RESTRAINING SYSTEM (VRS)
 - LANDSCAPING (REFER TO DRAWINGS M4CaN-DJV-ELS-ZG_GEN-DR-EN-0001 TO 0016)
 - WATER TREATMENT AREAS
 - NOISE BARRIER

KEY PLAN



GENERAL NOTES

- ALL DIMENSIONS ARE IN METRES UNLESS NOTED OTHERWISE.
- ONLY WRITTEN DIMENSIONS SHALL BE USED, DO NOT SCALE.
- FOR MAINTENANCE ACCESS AND RIGHTS OF ACCESS. REFER TO DRGS M4CaN-DJV-LS-ZG_GEN-DR-YL-0031 TO M4CaN-DJV-LS-ZG_GEN-DR-YL-0046

SAFETY, HEALTH AND ENVIRONMENTAL INFORMATION

In addition to the hazards/risks normally associated with the types of work detailed on this drawing, note the following significant residual risks (Reference shall also be made to the design hazard log).


Construction
No exceptional risks identified at this scale, refer to detailed drawings for specific hazard warnings

Maintenance / Cleaning
No exceptional risks identified at this scale, refer to detailed drawings for specific hazard warnings

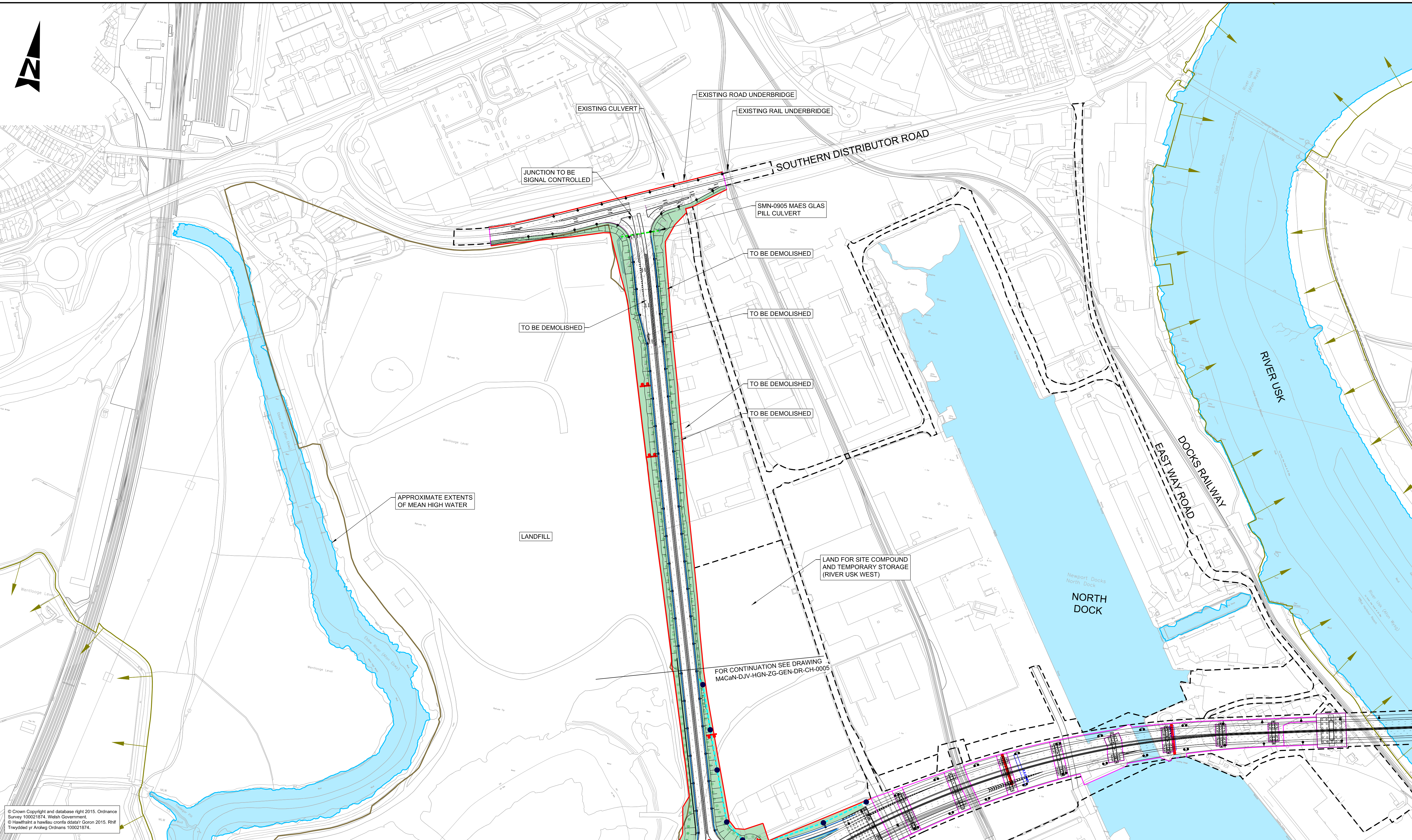
Use
No exceptional risks identified at this scale, refer to detailed drawings for specific hazard warnings

Decommissioning / Demolition
No exceptional risks identified at this scale, refer to detailed drawings for specific hazard warnings

ISSUE	04/02/16	FINAL ISSUE TO WG	AJD	CCR	BCS
Rev.	Date	Description	By	Chk'd	App'd

Drawing Status		Suitability		Project Title M4 CORRIDOR AROUND NEWPORT									
Project Team				Drawing Title FIGURE 2.4 GENERAL ARRANGEMENT SHEET 15 OF 16									
Client				Scale 1:2500		Designed / Drawn Ajd		Checked CCR		Approved BCS		Authorised BCS	
				Original Size A1		Date 04/02/16		Date 04/02/16		Date 04/02/16		Date 04/02/16	
 Llywodraeth Cymru Welsh Government				Drawing Number Project M4CaN - DJV - HGN - ZG_GEN - DR - CH - 0015								Revision AT ISSUE	
				Location Type Role Number									





<div><div>LEGEND:</div><div><div><div><div>HIGHWAY BOUNDARY</div><div>CPO BOUNDARY</div><div>SITE EXTENTS (LICENSE OR EASEMENT)</div><div>P.R.O.W - STOPPED UP</div><div>P.R.O.W - DIVERTED/NEW</div><div>EXISTING CULVERT</div><div>PROPOSED CULVERT</div><div>EXISTING OVERHEAD POWER LINES</div><div>DIVERTED OVERHEAD POWER LINES</div><div>PROPOSED PYLONS</div><div>SSSI</div><div>HIGHWAY DRAINAGE</div><div>HP GAS MAIN</div></div><div><div><div><div>ITS - M54 GANTRY</div><div>ITS - SIGNAL GANTRY</div><div>SIGN</div><div>SIGN GANTRY</div><div>REPLACEMENT REEN</div><div>REPLACEMENT FIELD DITCH</div><div>CUT-OFF DITCH</div><div>LIGHTING COLUMN - SINGLE</div><div>LIGHTING COLUMN - DOUBLE</div><div>VEHICLE RESTRAINING SYSTEM (VRS)</div><div>PROPOSED LANDSCAPING (REFER TO DRAWINGS M4CaN-DJV-ELS-ZG_GEN-DR-EN-0001 TO 0016)</div><div>WATER TREATMENT AREAS</div><div>NOISE BARRIER</div></div><div><div><div><div>KEY PLAN</div><div></div></div><div><div>GENERAL NOTES:</div><div>1. ALL DIMENSIONS ARE IN METRES UNLESS NOTED OTHERWISE.</div><div>2. ONLY WRITTEN DIMENSIONS SHALL BE USED. DO NOT SCALE.</div><div>3. FOR MAINTENANCE ACCESS AND RIGHTS OF ACCESS, REFER TO DRAWINGS M4CaN-DJV-LS-ZG_GEN-DR-YL-0031 TO M4CaN-DJV-LS-ZG_GEN-DR-YL-0046.</div></div></div></div></div><div><div>SAFETY, HEALTH AND ENVIRONMENTAL INFORMATION</div><div>In addition to the hazards/risks normally associated with the types of work detailed on this drawing, note the following significant residual risks (Reference shall also be made to the design hazard log).</div><div>Construction</div><div>No exceptional risks identified at this scale, refer to detailed drawings for specific hazard warnings</div><div>Maintenance / Cleaning</div><div>No exceptional risks identified at this scale, refer to detailed drawings for specific hazard warnings</div><div>Use</div><div>No exceptional risks identified at this scale, refer to detailed drawings for specific hazard warnings</div><div>Decommissioning / Demolition</div><div>No exceptional risks identified at this scale, refer to detailed drawings for specific hazard warnings</div></div><table><tr><td>Issue</td><td>04/02/16</td><td>FINAL ISSUE TO WG</td><td>HDJ</td><td>AJJ</td><td>BCS</td></tr><tr><td>Rev.</td><td>Date</td><td>Description</td><td>By</td><td>Chk'd</td><td>App'd</td></tr></table><div><div>Drawing Status</div><div>Project Title</div><div>Project Team</div><div>Drawing Title</div><div>FIGURE 2.4 GENERAL ARRANGEMENT</div><div>SHEET 16 OF 16</div><div>Client</div><div><div><div><div><div>Scale</div><div>1:2500</div></div><div><div>Designed / Drawn</div><div>HDJ</div></div><div><div>Checked</div><div>AJJ</div></div><div><div>Approved</div><div>BCS</div></div><div><div>Authorised</div><div>BCS</div></div></div><div><div>Original Size</div><div>A1</div></div><div><div>Date</div><div>04/02/16</div></div><div><div>Date</div><div>04/02/16</div></div><div><div>Date</div><div>04/02/16</div></div><div><div>Date</div><div>04/02/16</div></div></div><div><div>Drawing Number</div><div>Project</div><div>Originator</div><div>Volume</div><div>Revision</div></div><div><div>M4CaN - DJV - HGN -</div><div>ZG_GEN - DR - CH - 0016</div><div>AT ISSUE</div></div><div><div>Location</div><div>Type</div><div>Role</div><div>Number</div></div></div><div><div>Llywodraeth Cymru</div><div>Welsh Government</div><div></div></div></div></div></div></div></div>	Issue	04/02/16	FINAL ISSUE TO WG	HDJ	AJJ	BCS	Rev.	Date	Description	By	Chk'd	App'd
Issue	04/02/16	FINAL ISSUE TO WG	HDJ	AJJ	BCS							
Rev.	Date	Description	By	Chk'd	App'd							