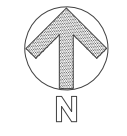


Notes
 Jennings Design Associates take no responsibility for any dimensions obtained by scaling from this drawing. If no dimension is shown the recipient must ascertain the dimension specifically from the Architect or by site measurement. Supplying this drawing in digital form is solely for convenience and no reliance may be placed on digital data. All data must be checked against hard copy. Dimensions must be checked on site. Any discrepancies must be reported to the Architect immediately. This drawing is copyright of Jennings Design Associates



Key:
 Priffordd yn cael ei chau (droetffordd) / Highway to be stopped up (footway)

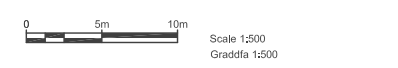
Rev	Description	Date	By
C	General amendments	06.02.20	RT
B	General amendments	06.02.20	RT
A	General amendments	05.02.20	RT

C	Concept	G	Contract
D	Planning	J	Construction
E	Building Regs	L	As Built
F	Tender	Sk	Sketch

jda architects
 Info@jda-architects.com
 www.jda-architects.com
 manchester: 0161 336 5011
 liverpool: 0151 665 0112

Client:	For Works
Project:	Gwynant & Glaslyn, Plas Madoc, Wrexham
Scale:	1:500
Original size:	A3
Date:	Aug 18
Drawn by:	RT
Checked by:	RH

Job Number	Description	Rev
1045	SK1020 Existing Footpaths_Gwynant	C



**LLYWODRAETH CYMRU
 WELSH GOVERNMENT
 Trafnidiaeth / Transport**

**GŦRCHYMYN CAU PRIFFYRDD (GWYNANT,
 PLAS MADOC, ACRE-FAIR, WRECSAM) 202-**

**THE STOPPING UP OF HIGHWAYS (GWYNANT,
 PLAS MADOC, ACREFAIR, WREXHAM) ORDER 202-**

Y Plan a Adnewwyd / Deposited Plan
 Rhif y Ffeil / File No: qA1417903

Z:\1045 - Plas Madoc, Wrexham\Drawings\Live\plots - building regs\Stopping Up Application\1045 SK1020_ExistingFootpaths_Gwynant.dwg