

- Notes: -
1. © Crown copyright 1999. This drawing must NOT be reproduced. Further copies may be obtained from the Welsh Office Highways Directorate, NM4 Division signs office.
 2. The letters shown are from the Transport Medium alphabet.
 3. The letters are placed on tiles for the purpose of spacing. The tile widths and heights are given.
 4. Dimensions are given in stroke widths (sw). 1sw is one quarter of the height of the lower case 'x'. Alphabet sizes are given in 'x'-heights. (4sw = 'x'-height)
 5. See drawing WO/TM4 for upper case letters with accents.

REVISIONS	
Before using this drawing confirm with NM4 Division that it has not been superseded.	
Drn.	A.T.I.
Chkd.	Appd.
Issue:	17.2.99
Scale:	Photo-reduced
Alphabets for signs Transport Medium Alphabet LOWER CASE LETTERS SHOWING ACCENTS	
WELSH OFFICE	
Drwg. no.	WO/TM5

Notes:-
 1. © Crown copyright 1999. This drawing must NOT be reproduced. Further copies may be obtained from the Welsh Office Highways Directorate, NM4 Division signs office.

2. The letters shown are from the Transport Heavy alphabet.

3. The letters are placed on tiles for the purpose of spacing. The tile widths and heights are given.

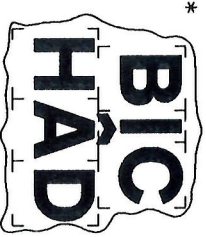
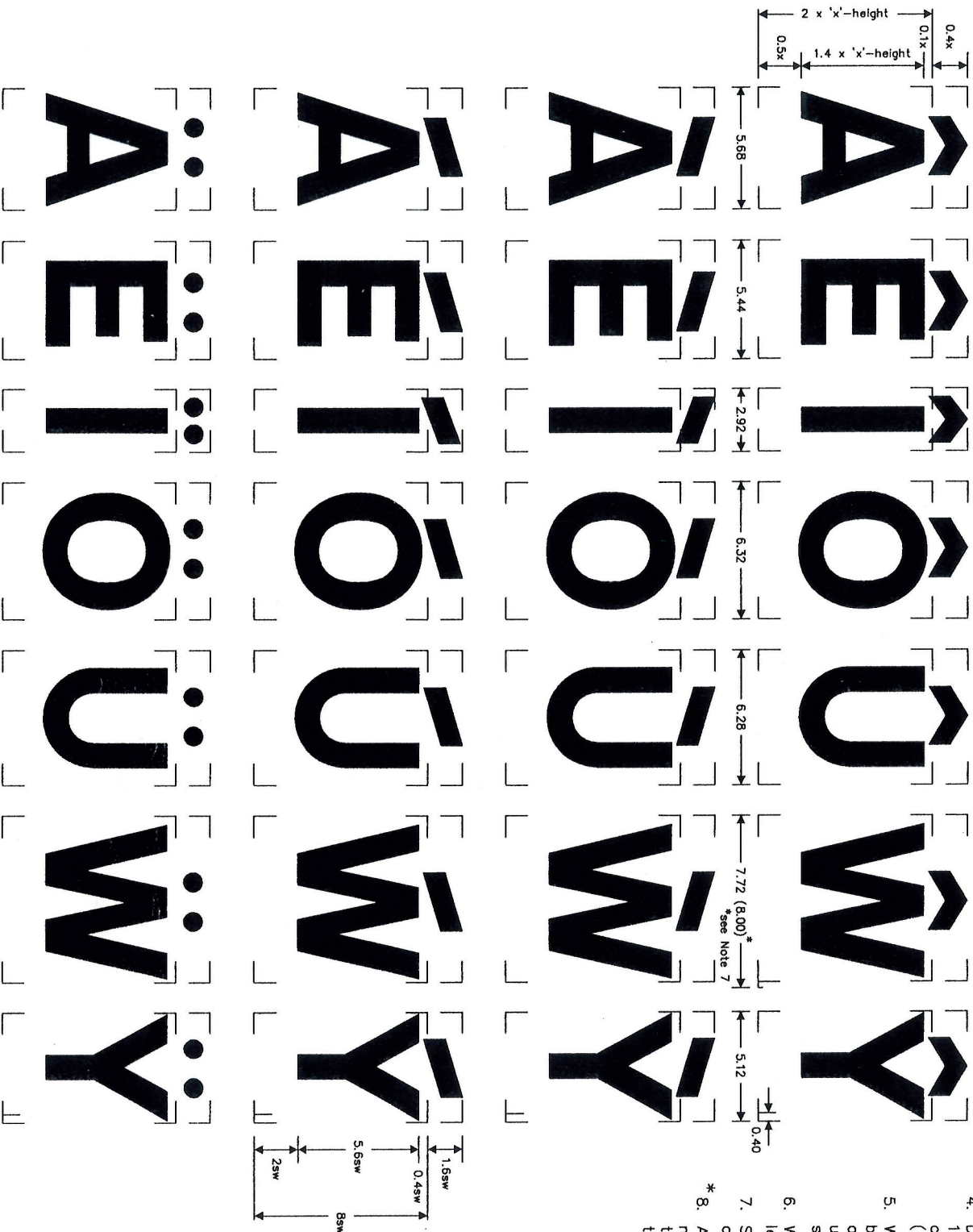
4. Dimensions are given in stroke widths (sw). 1sw is one quarter of the height of the lower case 'x'. Alphabet sizes are given in x-heights. (4sw = x-height)

5. When upper case letters T, V and Y are followed by lower case letters a, e, g, o, r or u the letters are brought closer together by overlapping the upper case tile with the lower case tile by the small dimension indicated.

6. When the upper case W is followed by upper case letters I, V, X, Y or Z the larger tile is used.

7. See drawing WO/TH5 for lower case letters with accents.

* 8. As a general rule when used in a block of two or more lines all tiles shall be butted together with the accent overlapping the lower portion of the tile above, as shown below.



REVISIONS

Drn.	A.T.I.	Appd.

Before using this drawing, confirm with NM4 Division that it has not been superseded.
 Chkd: 17.2.99
 Issue: 17.2.99
 Scale: Photo-reduced

Alphabets for signs
 Transport Heavy Alphabet
 UPPER CASE LETTERS
 SHOWING ACCENTS

