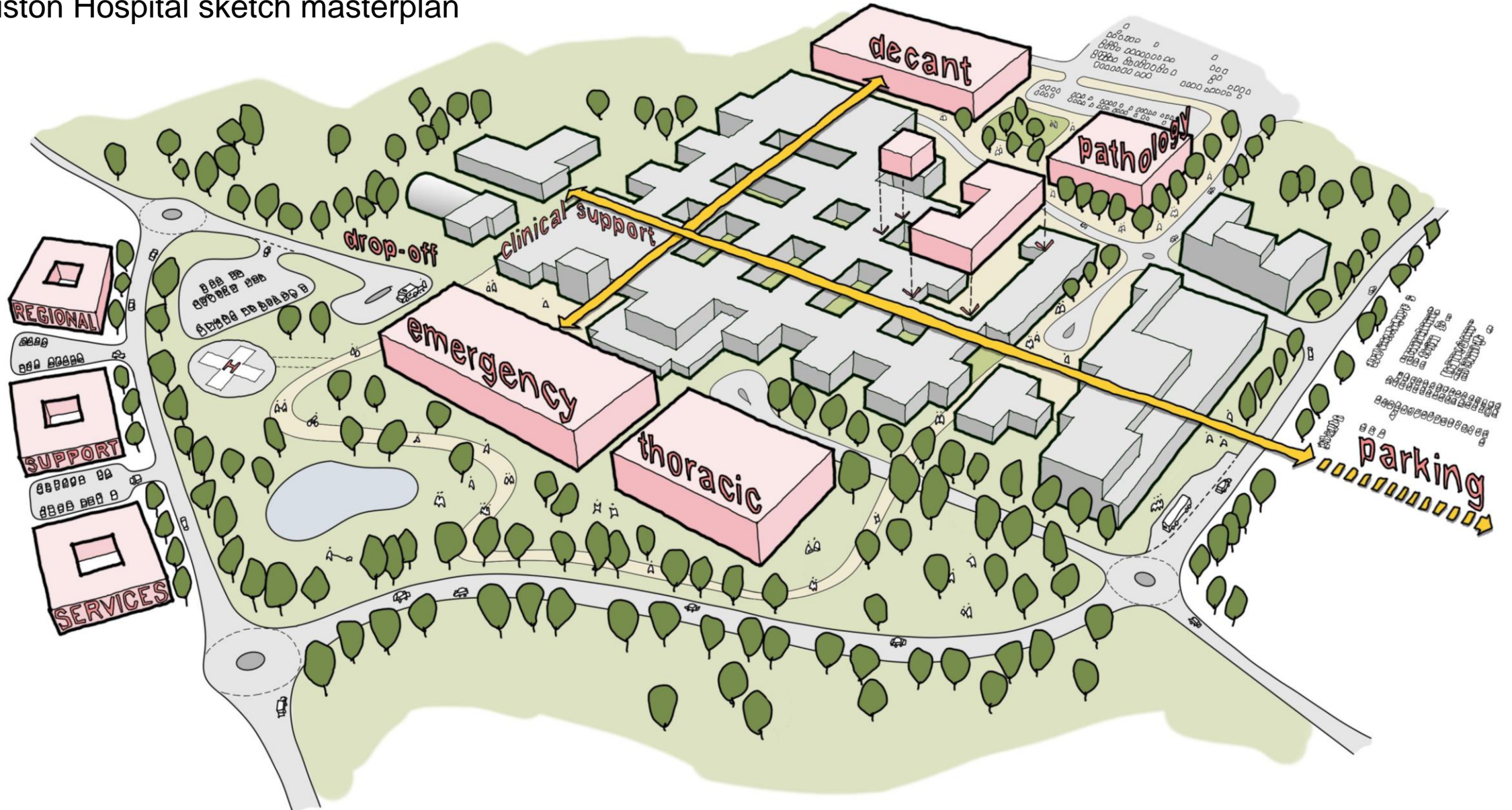


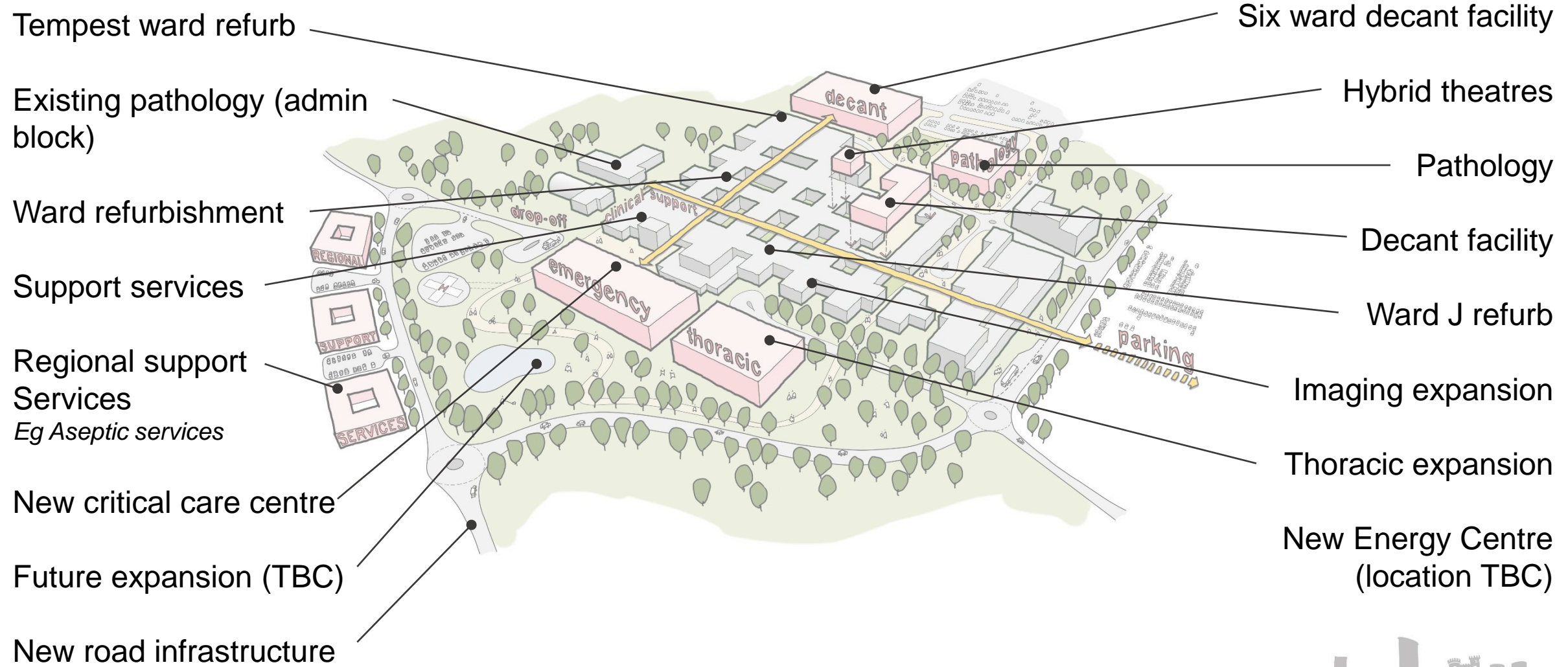
CAPITAL PROGRAMME PRIORITISATION 2022/23 AND BEYOND

Morrison Hospital sketch masterplan



CAPITAL PROGRAMME PRIORITISATION 2022/23 AND BEYOND

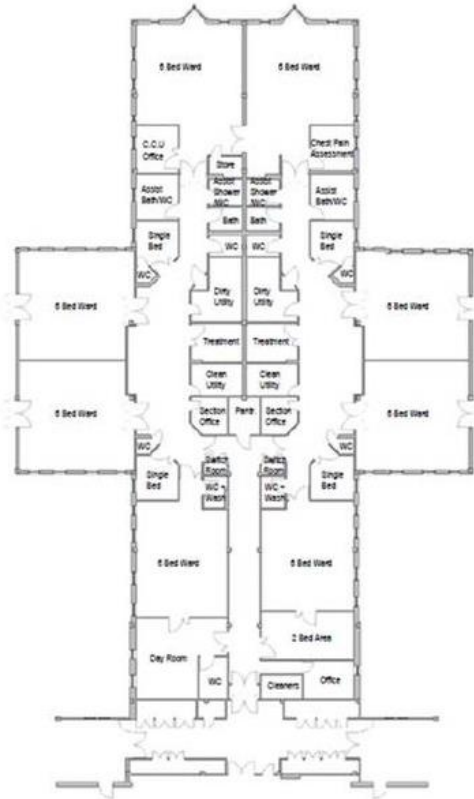
Morrison Hospital sketch masterplan



CAPITAL PROGRAMME PRIORITISATION 2022/23 AND BEYOND

Nucleus Template: Typical ward refurbishment solutions

Solutions shown below are not compliant with WHBN / WHTM in terms of space standards or allowances for support accommodation



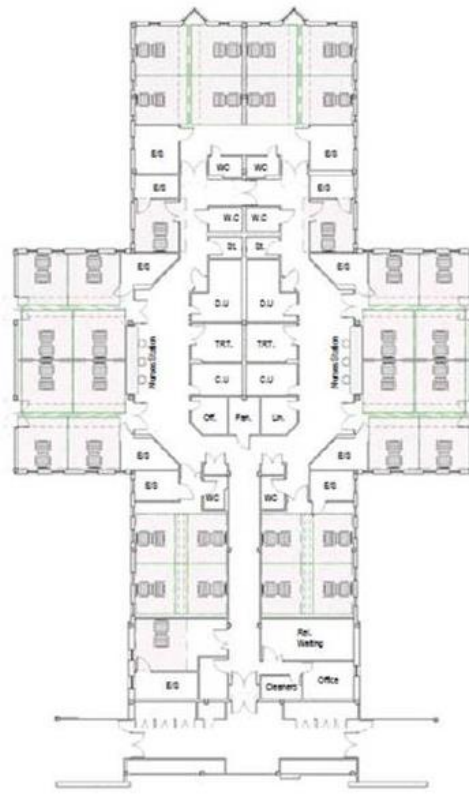
Existing plan:

56 beds

8 x 6 bed bays

8 x single bedrooms

(14%)



Option 1:

36 beds

8 x 4 bed bays

3 x single bedrooms

(8%)



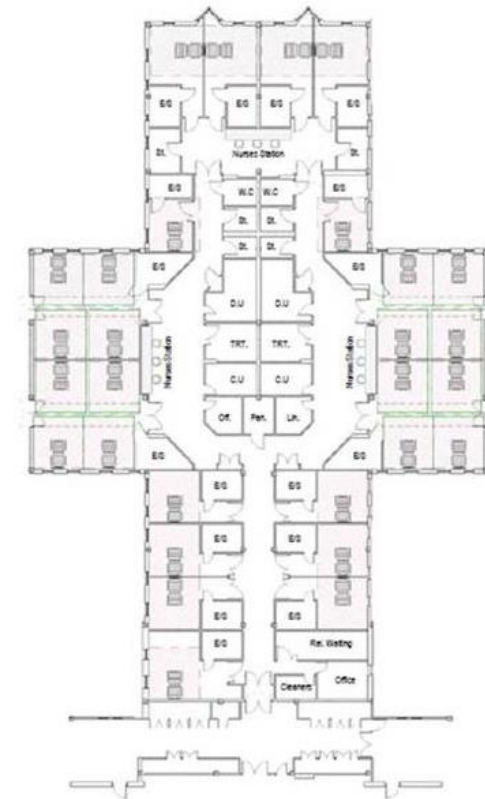
Option 2:

33 beds

6 x 4 bed bays

9 x single bedrooms

(27%)



Option 3:

29 beds

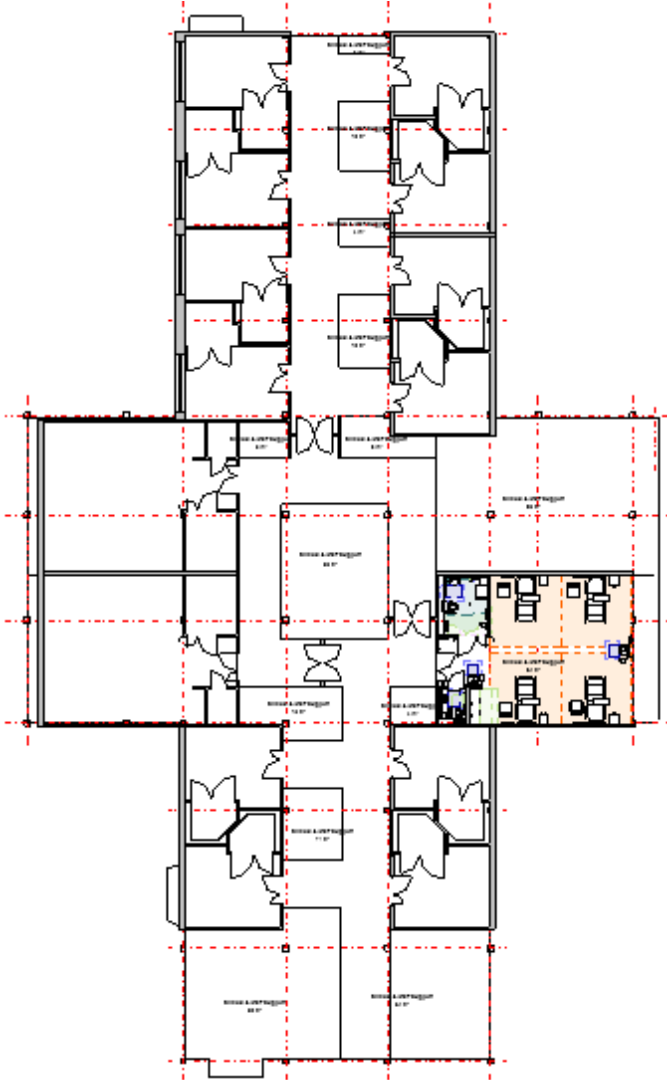
4 x 4 bed bays

13 x single bedrooms

(45%)

CAPITAL PROGRAMME PRIORITISATION 2022/23 AND BEYOND

Nucleus Template: Typical ward refurbishment solution – 50% single beds



- Solution based on Welsh Health Building Notes
- Nested en-suite arrangement
- 24 beds per ward
 - 3 x 4 bed bays
 - 12 x single bedrooms
- 50% single rooms
- 3 nursing units – 8 beds per unit
- Additional clinical support services
- Fire escape strategy requires further consideration
- Additional ventilation requirements WHTM 03-01
- Natural light to four-bed bays
- *Existing - circa 10 nucleus templates (based on layout plans)*
- *Circa 560 inpatient beds (excluding burns & CCU)*
- *Proposed bed numbers based on 50% singles – 240 beds*
- *New decant facility – Six x 32 bed wards – 192 beds*
- *Further work required to consider impact of phased refurbishment on roof replacement and services infrastructure upgrade works*



CAPITAL PROGRAMME PRIORITISATION 2022/23 AND BEYOND

Nucleus Template: Ward refurbishments ground floor

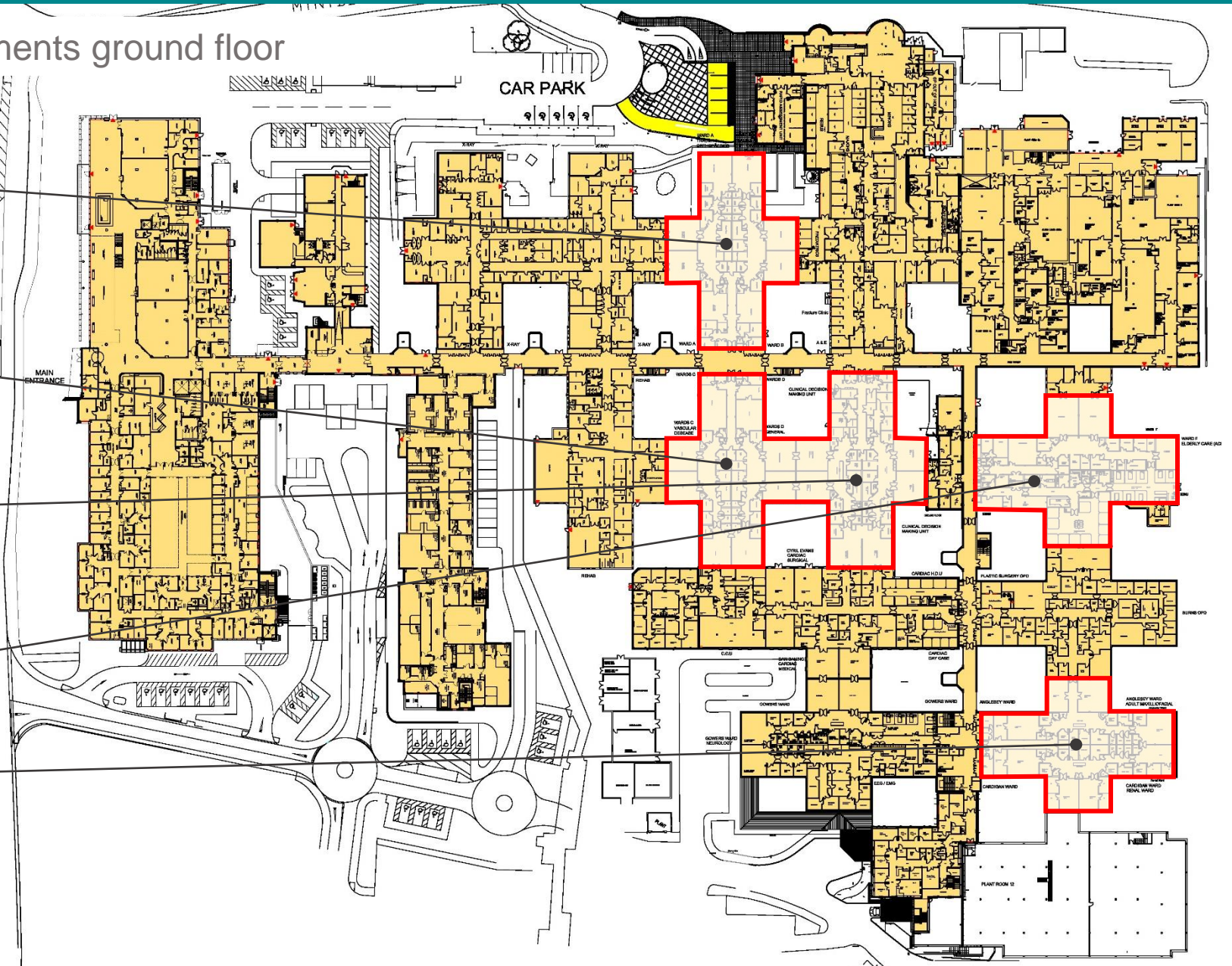
Wards A & B

Wards C & D

Clinical Decisions Unit

Elderly Care Ward

Anglesey and Cardigan Wards



CAPITAL PROGRAMME PRIORITISATION 2022/23 AND BEYOND

Nucleus Template: Ward refurbishments first floor

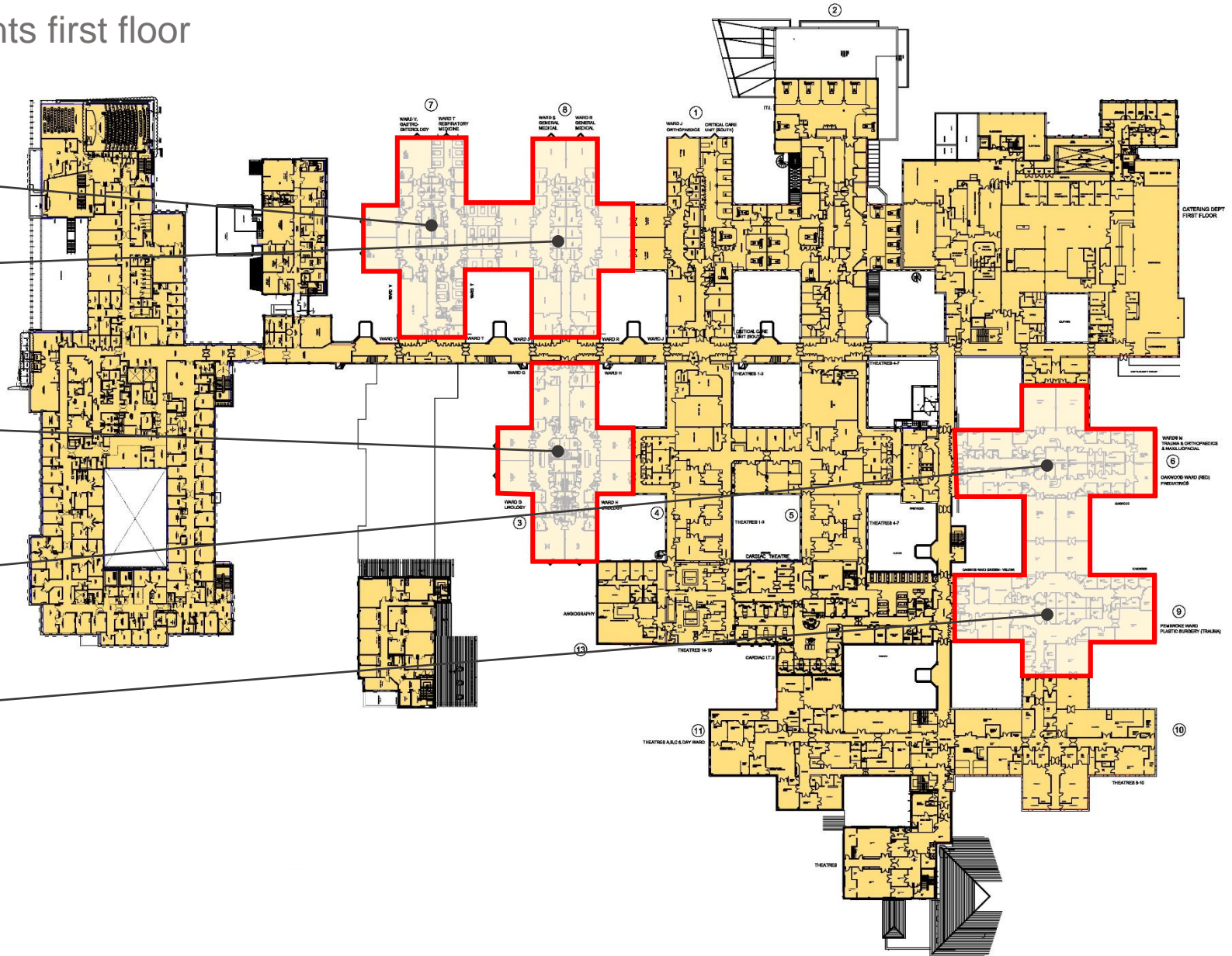
Wards T & V

Wards R & S

Wards G & H

Ward M & Oakwood

Pembroke Ward



CAPITAL PROGRAMME PRIORITISATION 2022/23 AND BEYOND

Singleton Hospital sketch masterplan – short term

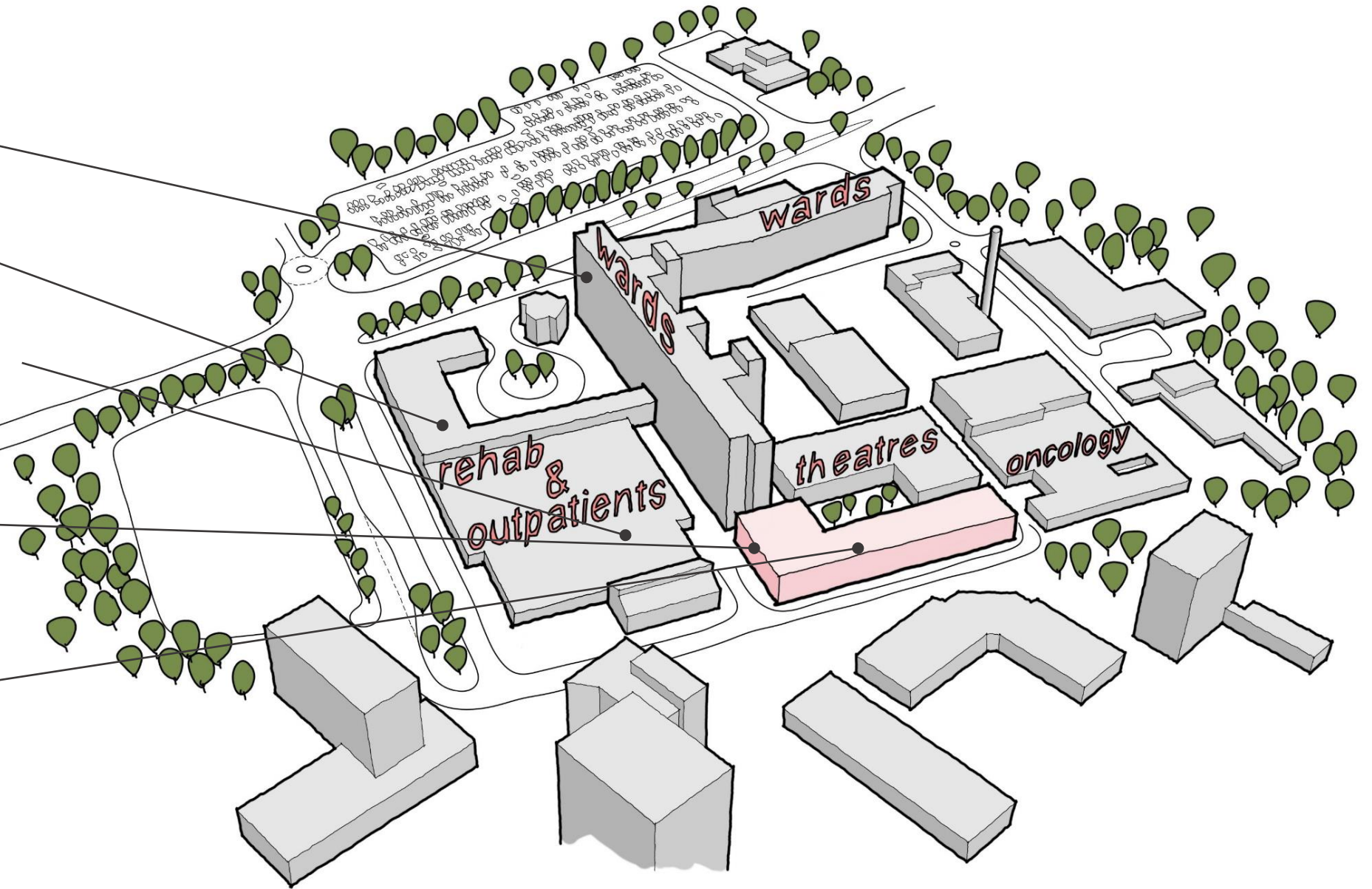
Ward block cladding replacement (ongoing)

Existing Rehab/OPD expanded

Medical records relocated

Pathology relocated (regional facility)

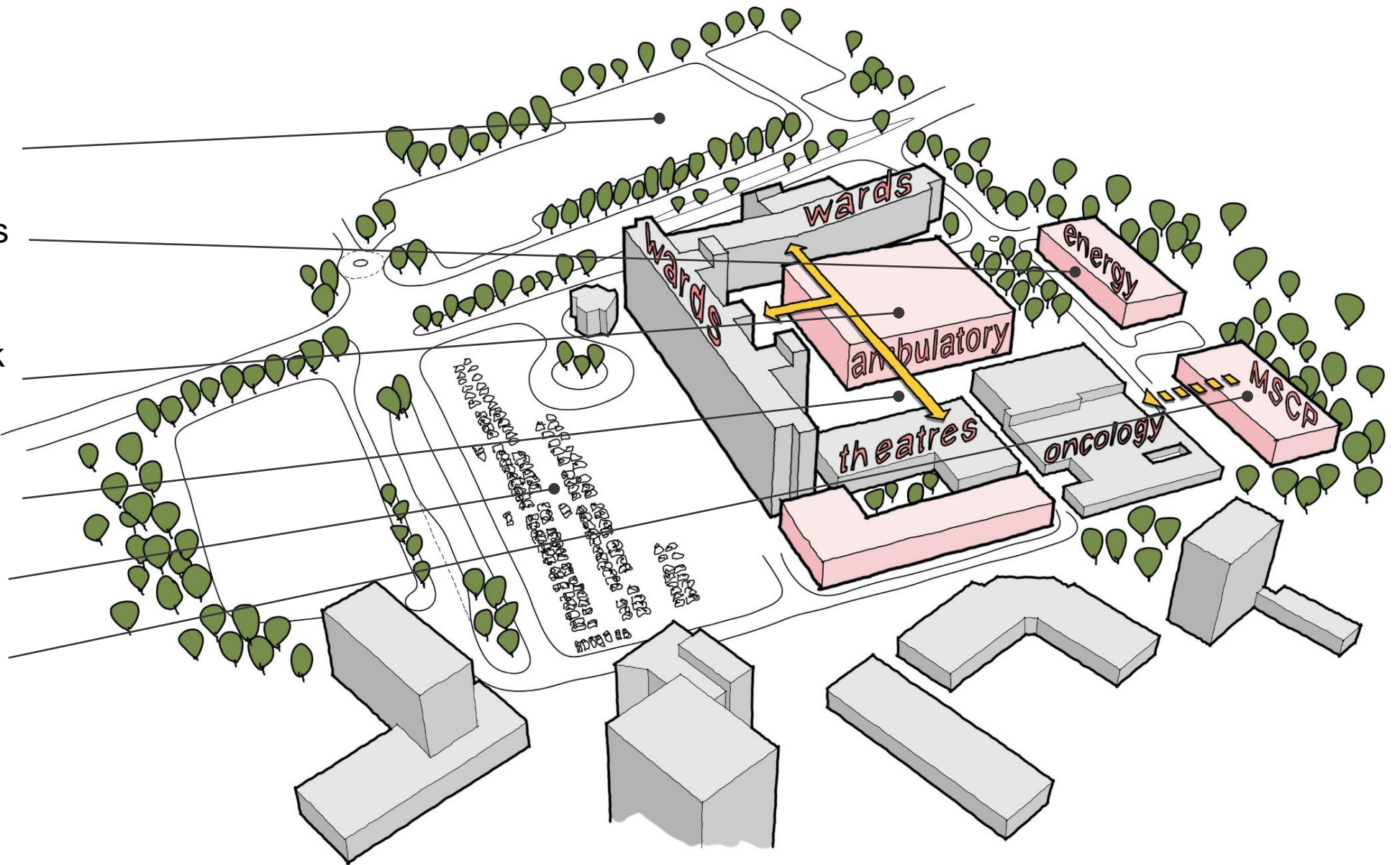
New theatre block (3 theatres and recovery)



CAPITAL PROGRAMME PRIORITISATION 2022/23 AND BEYOND

Singleton Hospital sketch masterplan – long term

- Car park site vacated
- Energy centre/ estates department
- Ambulatory care block (outpatients, rehabilitation, radiology, support)
- Improved connectivity
- New car park (grade)
- Multi-storey car park



CAPITAL PROGRAMME PRIORITISATION 2022/23 AND BEYOND

