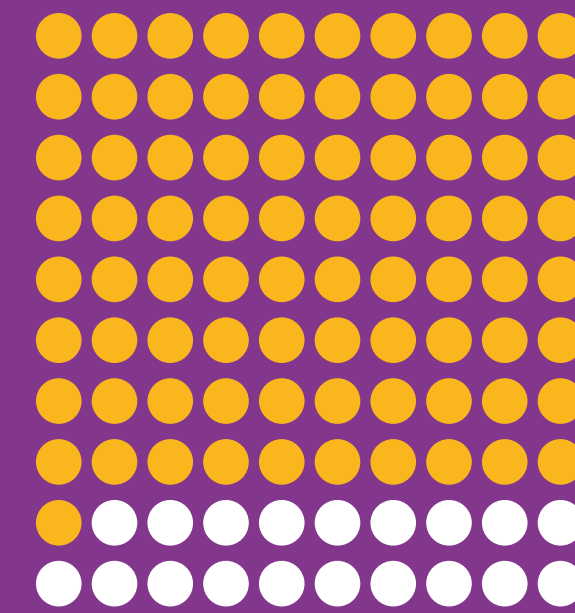


32%

32% o blant mewn ardaloedd o anfantais gymdeithasol uchel ag anghenion lleferydd, iaith a chyfathrebu eraill ¹



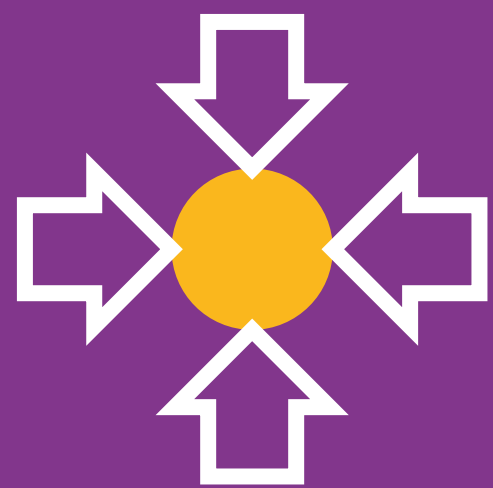
81% o blant a chanddynt anhwylderau emosiynol ac ymddygiadol ag anghenion cyfathrebu a oedd heb eu nodi o'r blaen ⁴



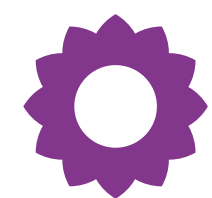
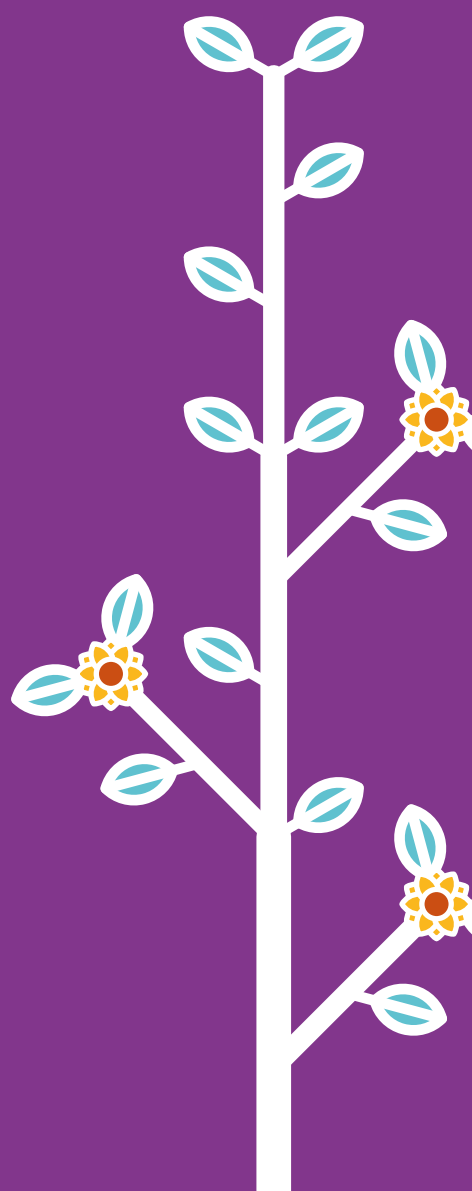
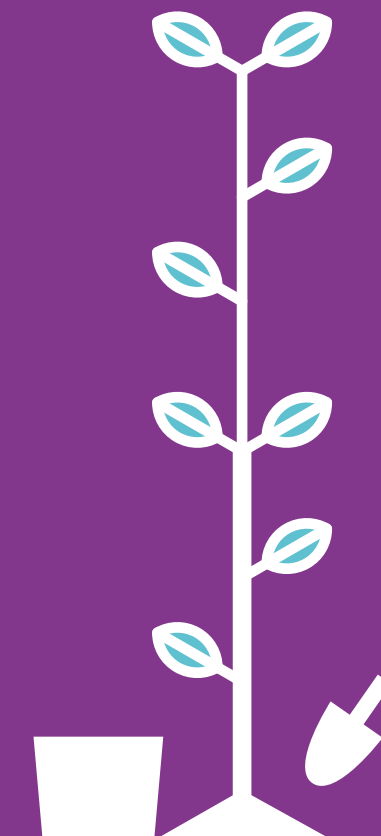
Yn ôl astudiaeth 2021, roedd gan 90% o bobl ifanc a adawodd gofal, anghenion lleferydd, iaith a chyfathrebu a oedd heb eu darganfod o'r blaen ²



Gall buddsoddi mewn hyfforddi ymarferwyr blynyddoedd cynnar gael effaith fawr ar ddeilliannau plant o ran lleferydd, iaith a chyfathrebu ⁵



Plant ag anghenion lleferydd, iaith a chyfathrebu yn fwy tebygol o gael eu bwlio ³



Llesiant

Mae ymateb i weithredoedd a geiriau plant yn allweddol

- ¹ Cyfrifiad Ysgolion Blynyddol ar Lefel Disgyblion (CYBLD), 2023 Anghenion dysgu ychwanegol ac anghenion addysgol arbennig (llyw.cymru) <https://statscymru.llyw.cymru/Catalogue/Education-and-Skills/Schools-and-Teachers/Schools-Census/Pupil-Level-Annual-School-Census/Special-Educational-Needs>
- ² Clegg, J., Crawford, E., Spencer, S. and Matthews, D. (2021). Developmental Language Disorder (DLD) in Young People Leaving Care in England: A Study Profiling the Language, Literacy and Communication Abilities of Young People Transitioning from Care to Independence. Int. J. Environ. Res. Public Health, 18, 4107. <https://doi.org/10.3390/ijerph18084107>
- ³ Lloyd-Esenkaya, V., Forrest, C.L., Jordan, A., Russell, A.J. & Clair, M.C.S. (2021) What is the nature of peer interactions in children with language disorders? A qualitative study of parent and practitioner views. Autism & Developmental Language Impairments, 6, 23969415211005307
- ⁴ Hollo A., Wehby J. & Oliver R. M. (2014). Unidentified Language Deficits in Children with Emotional and Behavioral Disorders: A Meta-Analysis. Exceptional Children
- ⁵ <https://educationendowmentfoundation.org.uk/education-evidence/early-years-toolkit/communication-and-language-approaches>