



Llywodraeth Cymru  
Welsh Government

# Science Evidence Advice

Weekly Surveillance Report

09 December 2025



gov.wales

OGL

© Crown copyright 2025

## Science Evidence Advice: Weekly Surveillance Report

### A. Top Line Summary (as at week 48 2025, up to 30 November 2025)

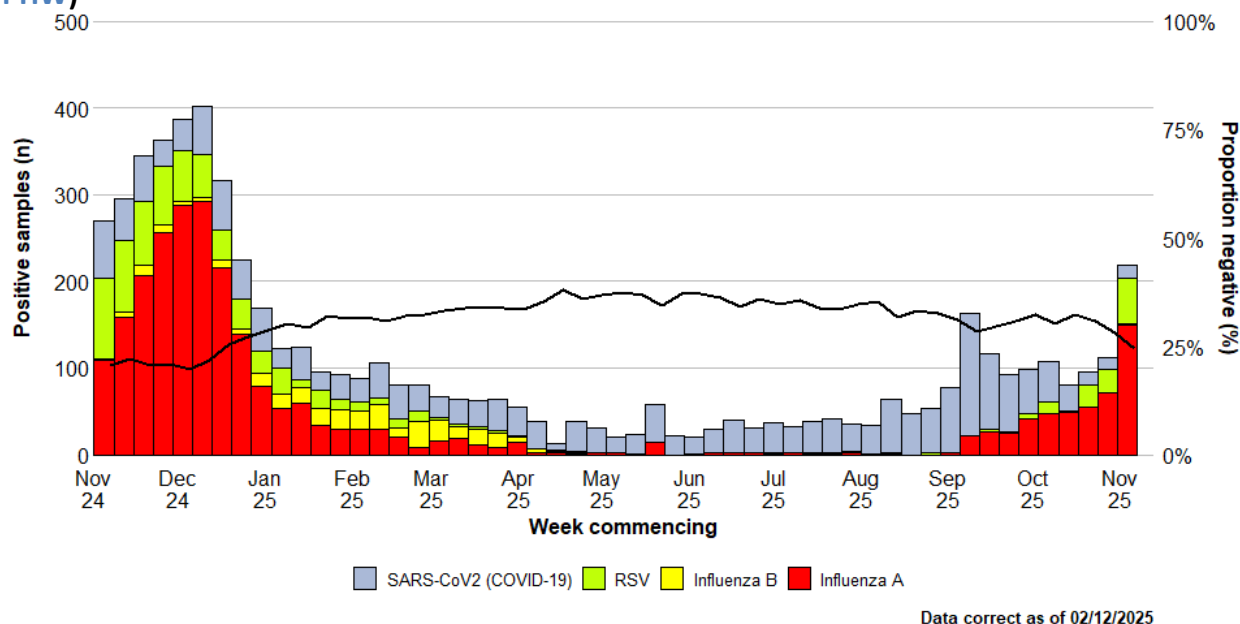
- Overall, COVID-19 confirmed case admissions to hospital **decreased**.
- COVID-19 in-patient cases have **decreased**.
- RSV activity in children under 5 years has **increased**.
- Influenza in-patient cases and admissions have **increased** in the latest week.
- Norovirus confirmed cases have **decreased** in the most recent week (week 48).
- Whooping Cough notifications **remained the same** in week 47 (the most recent week available).
- Scarlet Fever notifications **decreased** in the most recent week (week 48).

### B. Acute Respiratory Infections Situation Update

#### B1. COVID-19 Situation Update

- At a national level, the weekly number of confirmed cases of community-acquired admissions to hospital **decreased** and the number of cases who were inpatients **decreased** in week 48 2025 (to 30 November 2025).
- As of 30 November 2025 (week 48), the number of confirmed cases of community acquired COVID-19 admitted to hospital **decreased** to 24 (33 in the previous week) and there were 90 in-patient cases of confirmed COVID-19, two of whom were in critical care compared to 126 and two in the previous week.
- Confirmed cases of positive tests remained stable at 3.0 % in hospital and non-sentinel GP practices in the most recent week (week 48). Consultations with Sentinel GPs and sentinel community Pharmacies for COVID-19 remained stable in the most recent week.
- In the last six weeks, Omicron XFG.3 is the most frequently detected variant in Wales currently, accounting for **31.8%** of sequenced cases.

**Figure 1: Samples from hospital patients submitted for RSV, Influenza and SARS-CoV2 testing only, by week of sample collection, week 48, 2024 to Week 48, 2025. (source: PHW)**



### COVID-19, Respiratory Syncytial Virus (RSV) and Influenza Short Term Projections

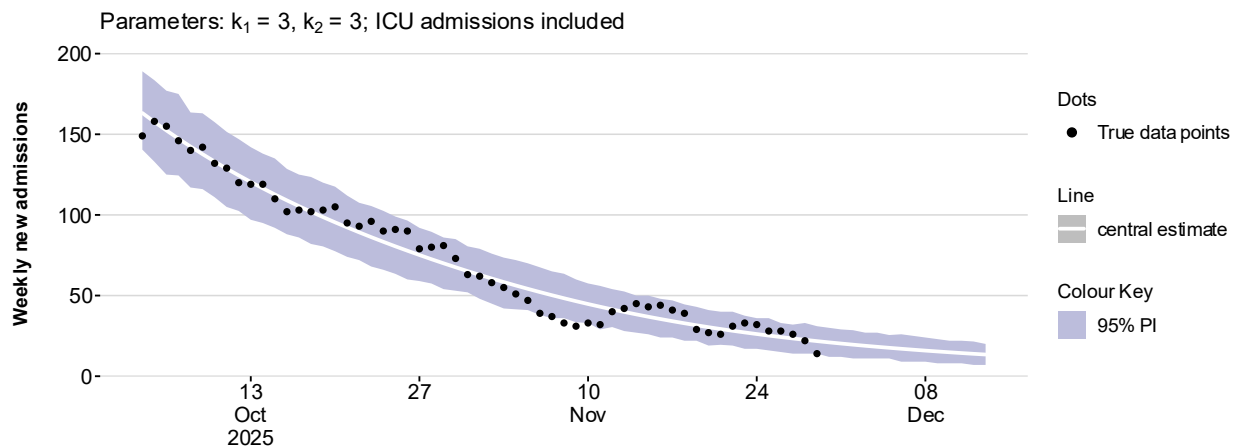
The Science Evidence Advice (SEA) team at Welsh Government have produced short term projections (STPs) for COVID-19, RSV and Influenza which can be produced nationally and at the Local Health Board level. RSV is also produced by age groups nationally. STPs project 2 weeks forward using current data from the previous 8 weeks, and do not explicitly factor in properties of the infectious disease, policy changes, changes in testing, changes in behaviour, emergence of new variants or rapid changes in vaccinations.

COVID-19, RSV and Influenza STPs use admissions data from PHW until **29 November 2025** to make short term projections two weeks forward (**to 13 December 2025**). The black or brown dots represent the actual data points while the white line is the central estimate from the most recent projection. The colour shadings represent the 95% confidence interval of the projections.

Please note: The STPs are produced nationally and at the provider health board level, not at resident health board level. Powys health board is not included in the analysis due to low numbers.

The STPs for Wales show that COVID-19 admissions are projected to decrease over the next two-week period (Figure 2).

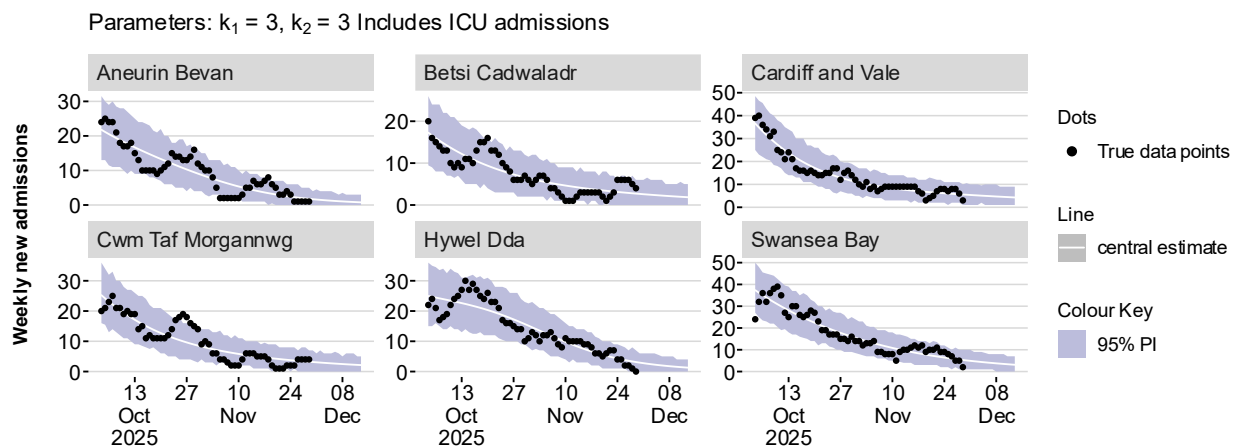
**Figure 2: Short Term Projections for COVID-19 hospital admissions in Wales (data to 29 November 2025, projection to 13 December 2025)**



Source: Public Health Wales

Figure 3 shows that COVID-19 admissions are projected to decrease in all health boards in Wales over the next two weeks (to 13 December 2025).

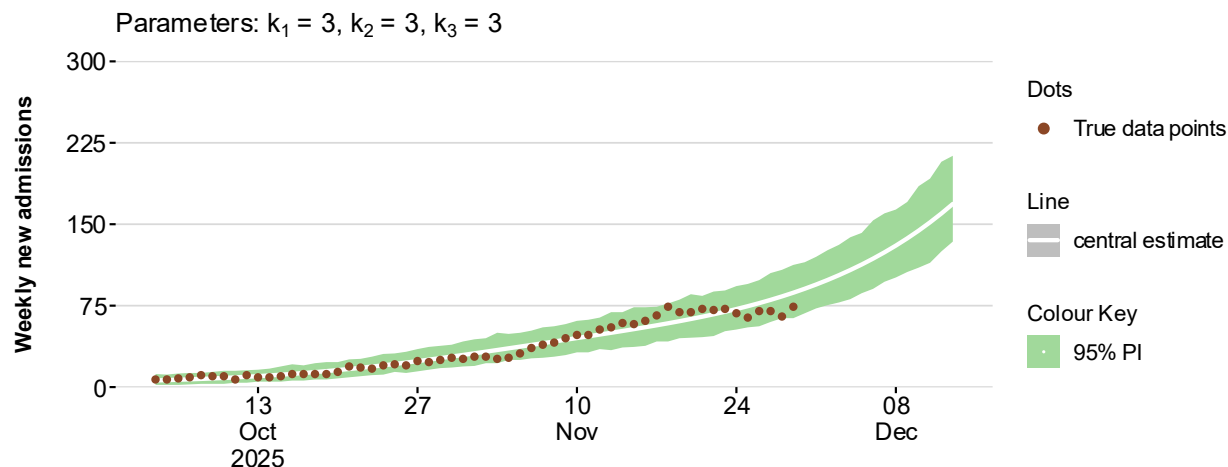
**Figure 3: Short Term Projections for COVID-19 hospital admissions in Wales Health Boards (data to 29 November 2025, projections to 13 December 2025)**



Source: Public Health Wales

The STPs for Wales show that RSV admissions are projected to increase over the next two-week period (Figure 4).

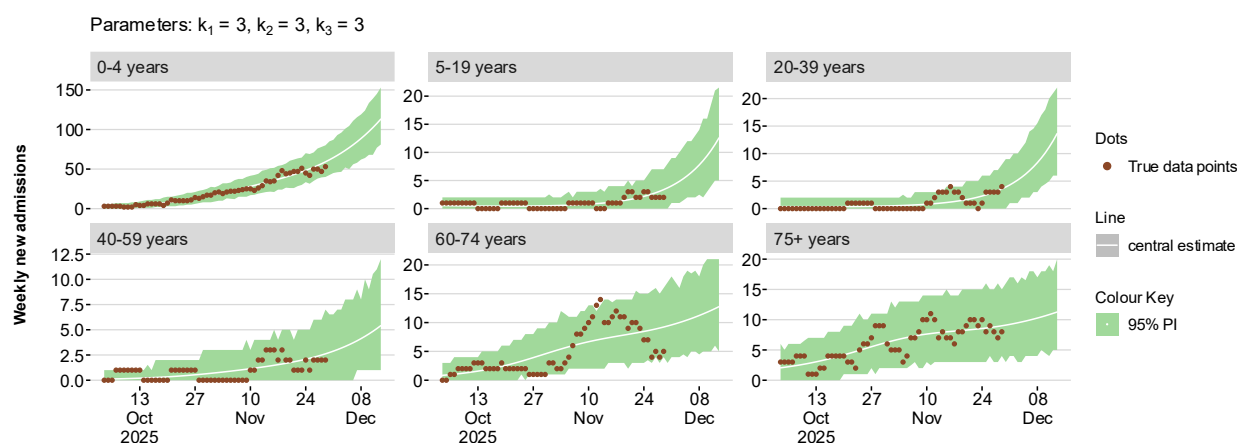
**Figure 4: Short Term Projections for RSV hospital admissions in Wales (data to 29 November 2025, projection to 13 December)**



Source: Public Health Wales

Figure 5 shows that RSV admissions for all age groups are projected to increase over the next two weeks (to 13 December 2025).

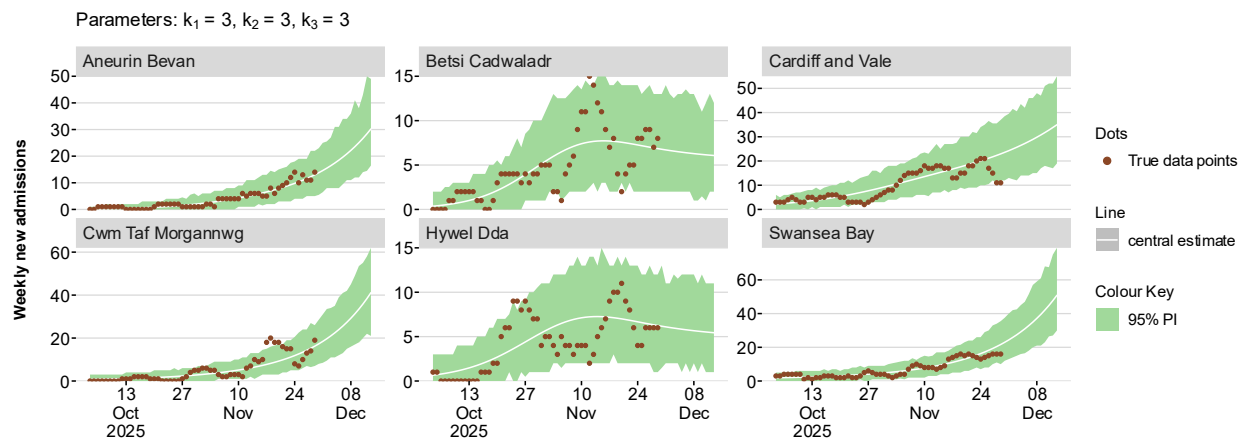
**Figure 5: Short Term Projections for RSV hospital admissions in Wales by age groups (data to 29 November 2025, projections to 13 December)**



Source: Public Health Wales

Figure 6 shows that RSV admissions for Aneurin Bevan, Cardiff and Vale, Cwm Taf Morganwg and Swansea Bay health boards are projected to increase over the next two weeks (to 13 December 2025).

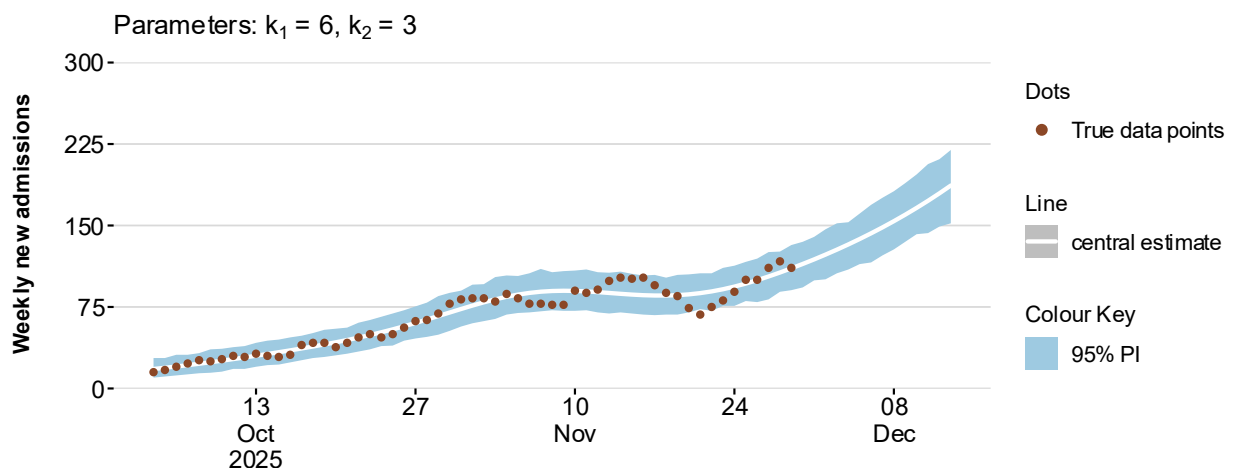
**Figure 6: Short Term Projections for RSV hospital admissions in Wales Local Health Boards (data to 29 November 2025, projections to 13 December 2025)**



Source: Public Health Wales

The STPs for Wales show that Influenza admissions are projected to increase over the next two-week period (Figure 7).

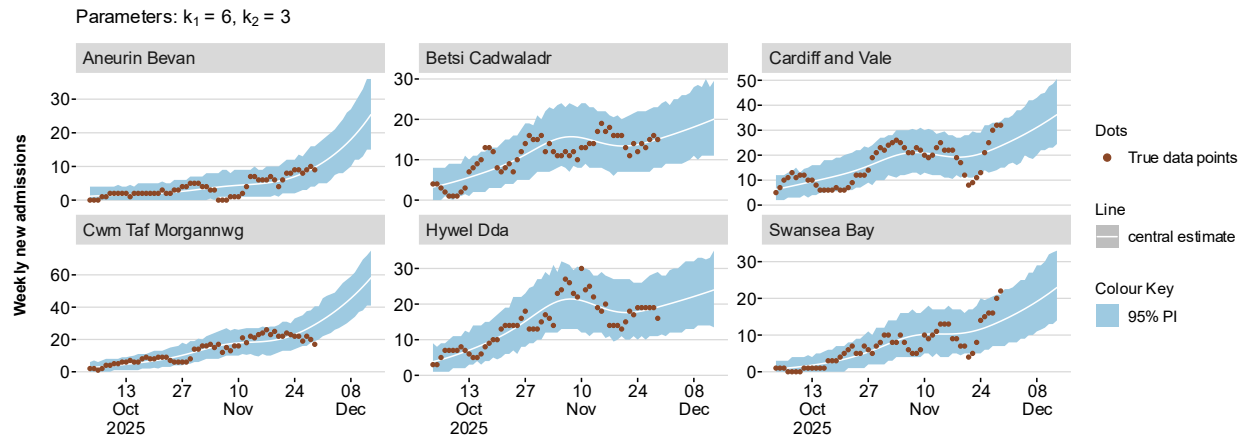
**Figure 7: Short Term Projections for Influenza hospital admissions in Wales (data to 29 November 2025, projection to 13 December)**



Source: Public Health Wales

Figure 8 below shows that Influenza admissions are projected to increase in all health boards in Wales over the next two weeks (to 13 December 2025).

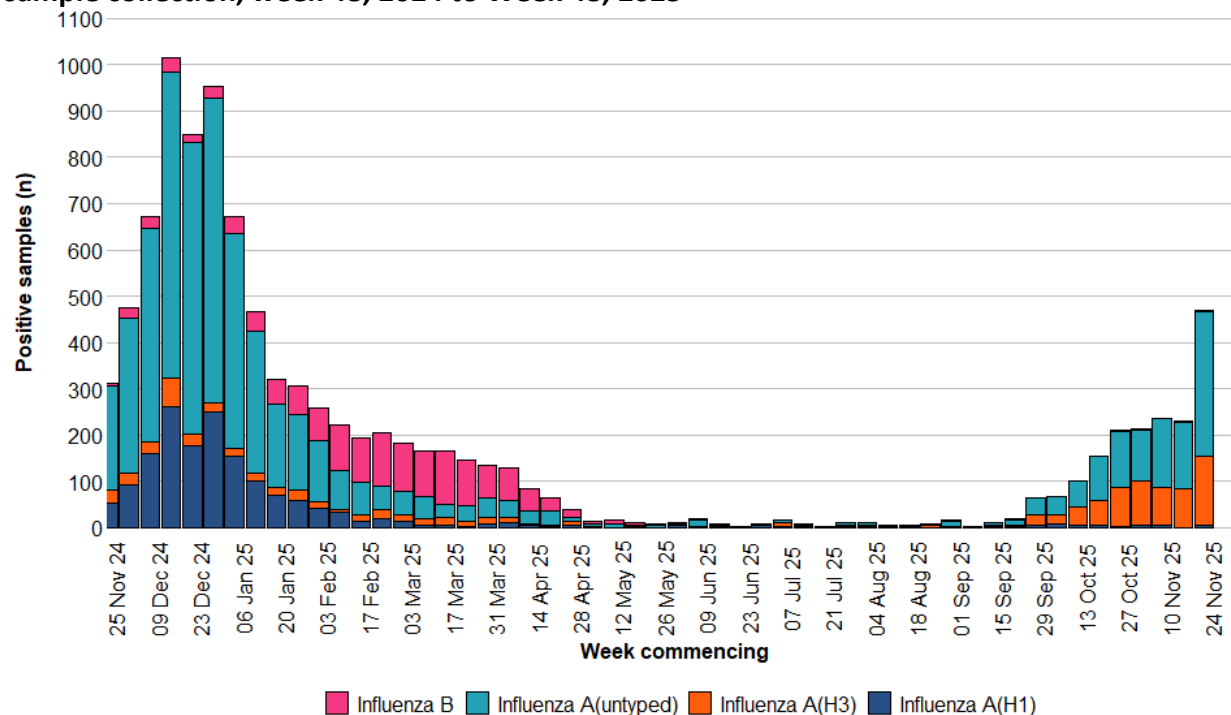
**Figure 8: Short Term Projections for Influenza hospital admissions in Wales Local Health Boards (data to 29 November 2025, projections to 13 December 2025)**



## B.2. Influenza Situation Update

- Influenza activity is currently at low levels; however, case numbers increased significantly last week. Consultations for influenza-like illness (ILI) with sentinel GPs increased and are at low intensity.
- Confirmed cases of community acquired influenza admitted to hospital **increased to 145** in the current week (compared to **62** in the previous week). Test positivity increased to **18%**.
- There were **182** in-patient cases of confirmed influenza, **eight** of whom were in critical care compared to **104** and **three** in the previous week.
- In week 48 2025, there were 149 confirmed cases of influenza A(H3), five influenza A(H1N1), 313 influenza A untyped and three influenza B. (Figure 9).

**Figure 9: Influenza subtypes based on samples submitted for virological testing by Sentinel GPs and community pharmacies, hospital patients, and non-Sentinel GPs, by week of sample collection, week 48, 2024 to Week 48, 2025**



Data correct as of 02/12/2025

(source: [PHW](#))

The sentinel GP consultation rate for influenza-like illness (ILI) is at low intensity and the three-week trend is variable.

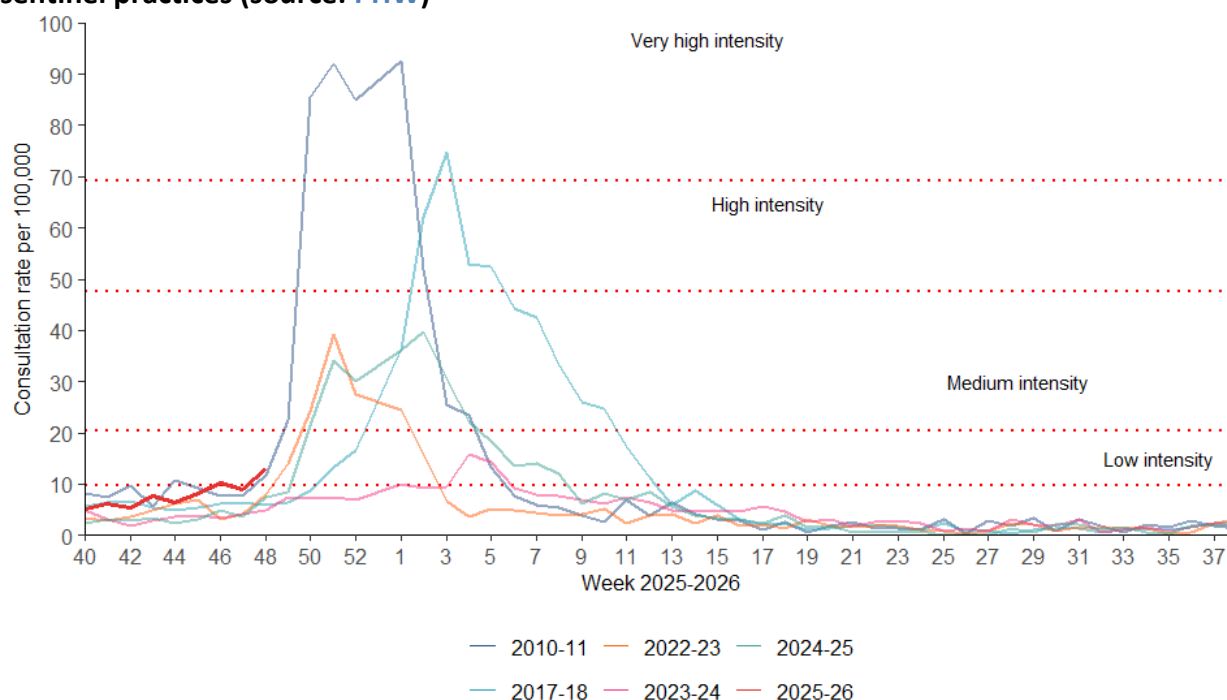
There were **13.1** ILI consultations per 100,000 practice population in the most recent week, an increase compared to the previous week (8.8 consultations per 100,000).

In the most recent week, using all available data from general practices, there were 12.5 ARI consultations per 100,000 practice population, a decrease from 15.8 in the previous week. The highest rates were found in people aged under 1 year (1,454.8) followed by people aged 1 to 4 (1,253.3) and people aged 5 to 14 (392.5).

Surveillance indicators for acute respiratory infections in GP consultation data in Wales are increasing in people aged under 5 years.



**Figure 10: Clinical consultation rate for ILI per 100,000 practice population in Welsh sentinel practices (source: PHW)**



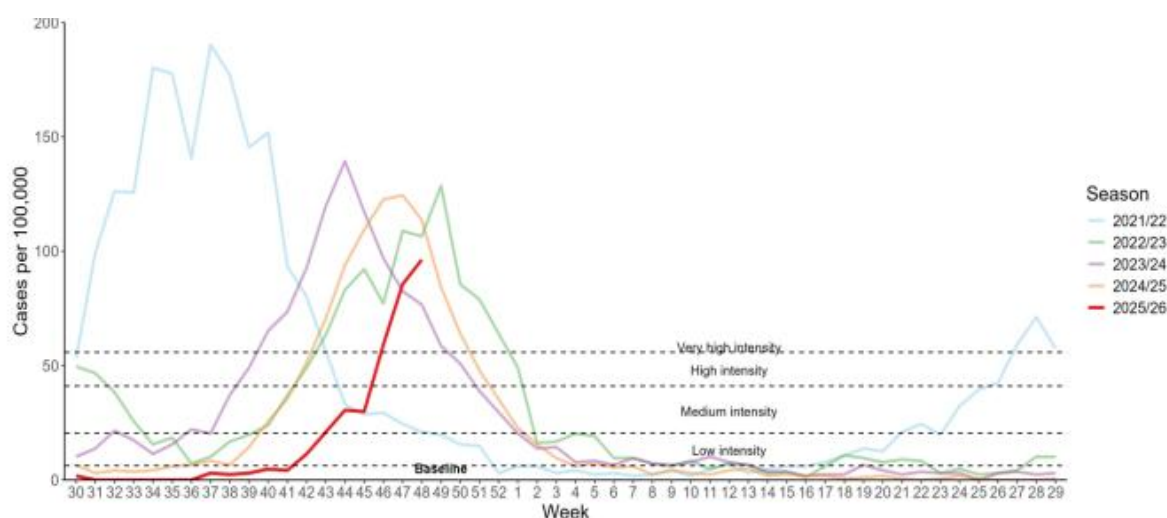
Data correct as of 02/12/2025

### B.3. Respiratory Syncytial Virus (RSV) update

The number of confirmed cases of community acquired RSV admitted to hospital increased to 90 in Week 48.

Incidence per 100,000 in children aged up to 5 years **increased** to **96.3** in the most recent week (85.5 in the previous week). During week 48 there were 81 in-patient cases of confirmed RSV, and six in critical care.

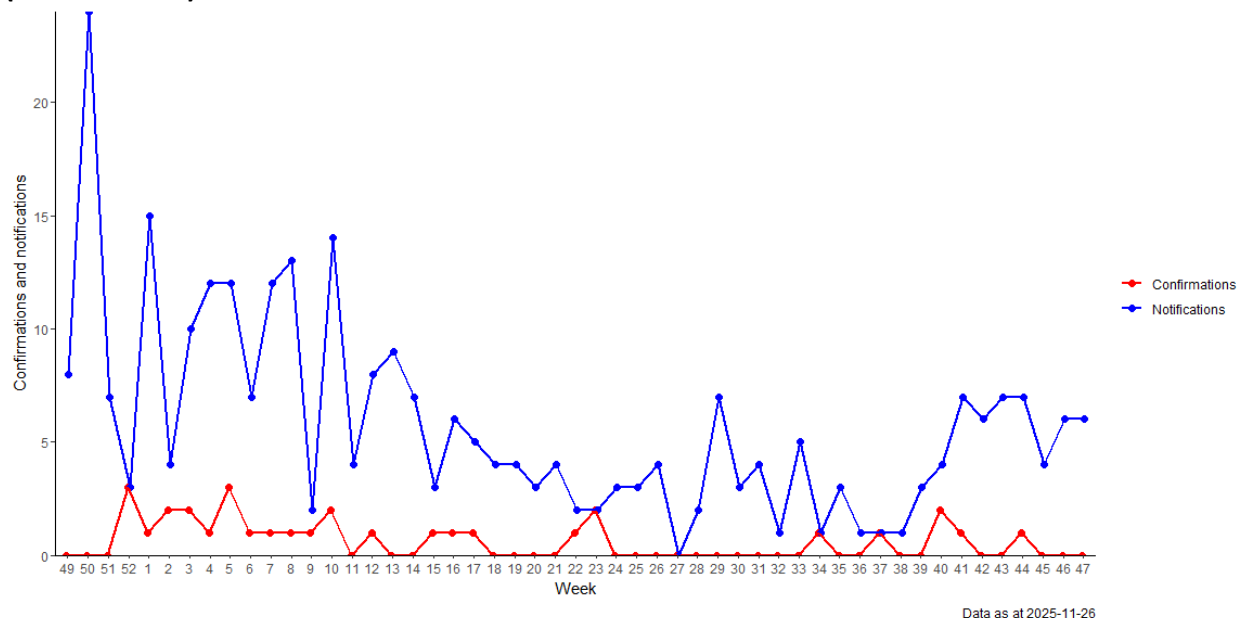
**Figure 11: RSV Incidence Rate per 100,000 population under 5 years, week 30 2020 to Week 48 2025 (source: PHW)**



#### B.4. Whooping Cough (Pertussis)

Figure 12 below shows that whooping cough notifications up to the end of week 47 (latest data available) **remained the same**. Lab confirmations continue to be at very low levels (Whooping cough is now reported on every two weeks).

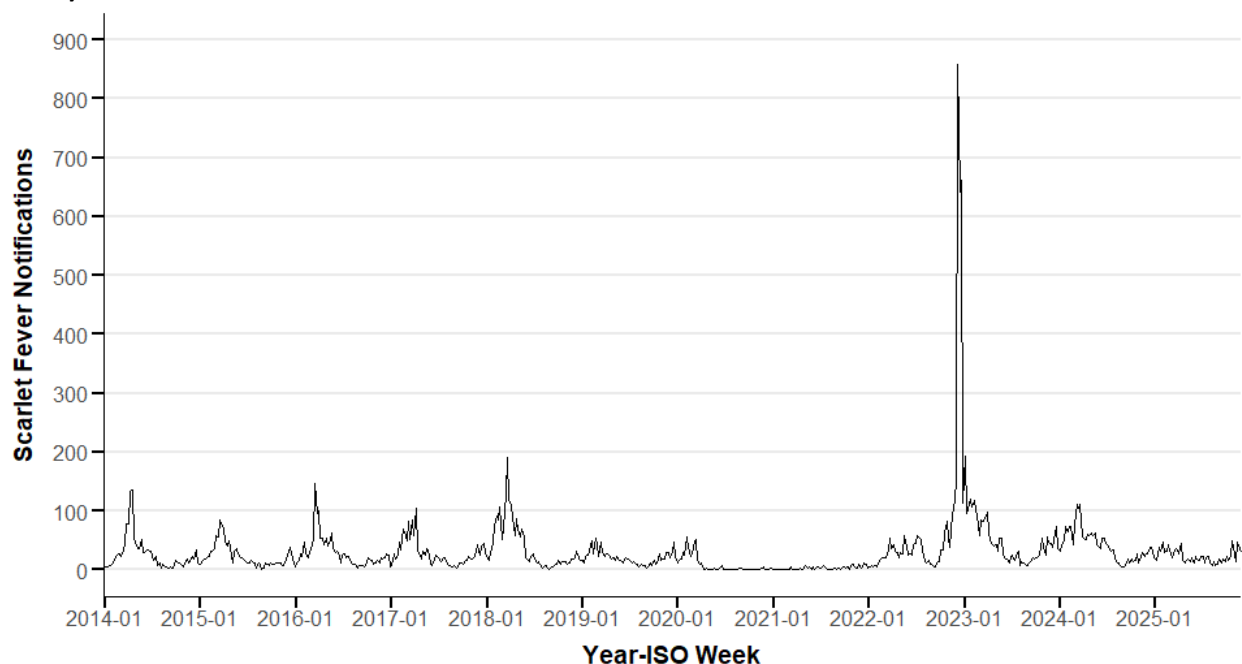
**Figure 12: Weekly notifications and confirmations of Pertussis/Whooping Cough in Wales.**  
(Source: [PHW](#))



#### B.5 iGAS and Scarlet Fever

The number of iGAS notifications is currently low, remaining at seasonally expected levels. Scarlet Fever notifications have **decreased** in the most recent week (week 48) as shown in the figure below.

**Figure 13: Rolling 3 Week Average Scarlet Fever Notifications, 2014-2025, Wales (source: PHW)**



Data as at 30 November 2025

#### B.6 Additional indicators

- The number of ambulance calls recorded referring to syndromic indicators increased from **1,846** in the previous week to **2,060** in the latest reporting week.
- During Week 48, 2025, 12 ARI outbreaks were reported to the Public Health Wales Health Protection Team. Of these, Influenza was confirmed in 8, the remaining included broader ARI or GI symptoms. Nine were in residential care homes and three were in nursery/ school or daycare settings.
- Thus far this season, According to European Mortality Monitoring (EuroMoMo) methods, no excess has been reported in the weekly number of deaths from all causes in Wales thus far this winter.

### C. Science Evidence Advice Winter Modelling

The Science Evidence Advice (SEA) team in Welsh Government have published modelled scenarios for COVID-19, RSV and Influenza for [Winter 2025-26](#).

This uses analysis of historical data to estimate what we may see in winter 2025/26 in terms of hospital admissions and hospital bed occupancy in Wales, contributing to winter planning for NHS Wales.

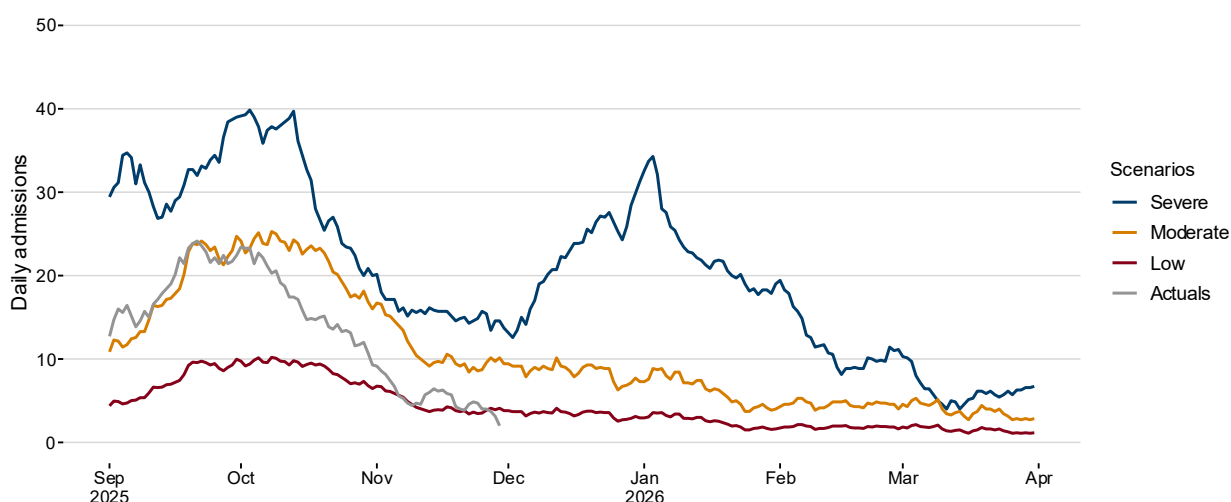
The charts that follow (Figures 14-16) show estimates of hospital admissions occurring so far in winter 2025/26 using actual data and these are compared to our 2025/26 winter modelling scenarios. (See the technical notes at the end of section **C. Science Evidence Advice Winter Modelling** for details on how the ‘actuals’ were estimated).

Note that modelling is an estimate of what may happen, not a prediction of what will happen.

#### COVID-19

COVID-19 admissions are decreasing and are currently below the Low scenario.

**Figure 14 Daily COVID-19 Winter 2025-26 admissions scenarios, modelling to 31 March 2026 (actuals data until 29 November 2025)**



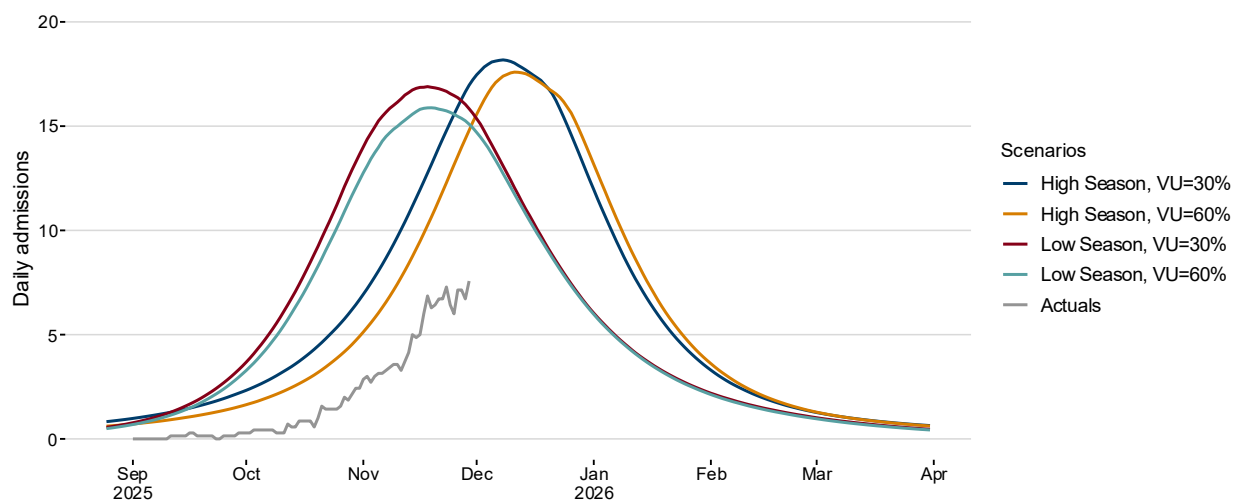
Source: historical data to 31 March 2025 provided by DHCW, projected scenarios from 1 September 2025 to 31 March 2026 from SEA, actuals data until 29 November 2025 from PHW.

Notes: Scenarios repeat previous year's data from Digital Health and Care Wales. Includes ICD-10 codes U071, U072, U099, U109.

## RSV

RSV admissions (ages 0-4 years) actuals are increasing but are currently tracking below all Scenarios.

**Figure 15: Daily RSV Winter 2025-26 paediatric (ages 0-4) admissions scenarios, modelling to 31 March 2026 (actuals data until 29 November 2025)**

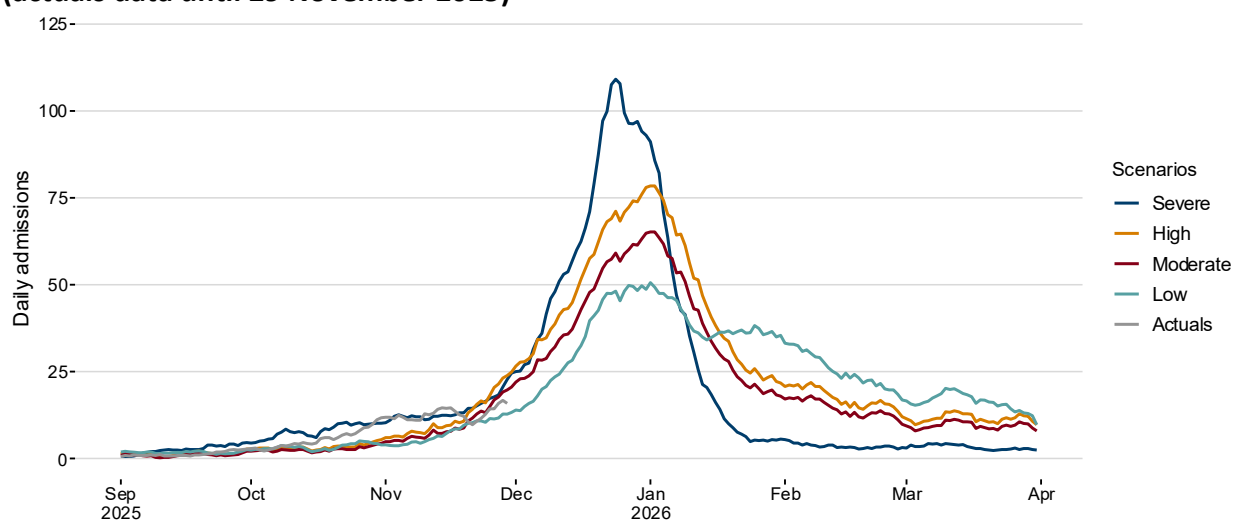


Source: historical data to 31 March 2025 provided by DHCW, projected scenarios from 1 September 2025 to 31 March 2026 from SEA, actuals data until 29 November 2025 from PHW.

## Influenza

Influenza (flu) admissions actuals are fluctuating and are currently tracking above the Low scenario.

**Figure 16: Daily flu winter 2025-26 admissions scenarios, modelling to 31 March 2026 (actuals data until 29 November 2025)**



Source: historical data to 31 March 2025 provided by DHCW, projected scenarios from 1 September 2025 to 31 March 2026 from SEA, actuals data until 29 November 2025 from PHW.

## Technical Notes

The winter modelling used hospital admissions data from the Patient Episode Data for Wales (PEDW) dataset provided by Digital Health and Care Wales (DHCW). However, due to a lag in clinical coding and receiving PEDW data from DHCW, the ICNET admissions data provided by Public Health Wales (PHW) were used for the actuals. The data sources differ for a few reasons: the flu and RSV data from PHW includes lab-confirmed results only and includes inpatients only. The PEDW data from DHCW is based on [International Classification of Diseases version 10](#) (ICD-10) codes.

### Modelling scenario details:

- **COVID-19:** Data includes ICD-10 codes U071, U072, U099, U109. Two scenarios repeat recent year's data from Digital Health and Care Wales, and one is calculated by applying a statistical technique.

### Names of COVID-19 scenarios and the statistical model applied

Scenario name	Technique
Severe	Repeat of 2023/2024 data
Moderate	Repeat of 2024/2025 data
Low	SARIMA

- **RSV:** Data includes ICD-10 codes J121, J205, J210, B974.

### Names of RSV scenarios, model assumptions

Scenario name	Reference Season	Vaccine uptake (VU)
High season, VU= 30%	2022/23 winter	30%
High season, VU= 60%	2022/23 winter	60%
Low season, VU= 30%	2023/24 winter	30%
Low season, VU= 60%	2023/24 winter	60%

- **Flu:** Data includes ICD-10 codes J09X, J100 to J102, J110, J108, J111, J112, J118.

### Names of influenza scenarios and the statistical models applied

Scenario name	Technique
Severe	Repeat of 2022/23 data
High	Repeat of 2024/25 data
Moderate	SARIMA
Low	ETS

## D. Communicable Disease Situation Update (non-respiratory)

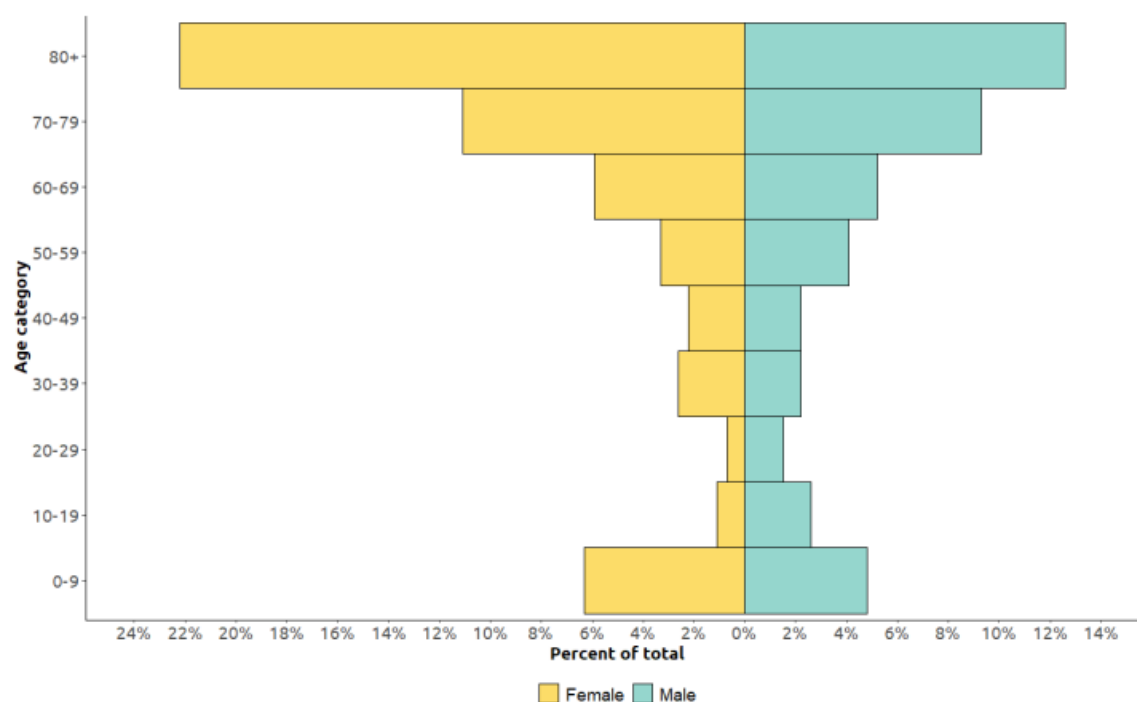
### D.1 Norovirus

In the current reporting week (week 48 2025), a total of **38** Norovirus cases were reported in Welsh residents. This is a decrease **(-24.0%)** in reported cases compared to the previous reporting week (week 47 2025), when **50** Norovirus cases were reported.

In the last 12-week period (08/09/2025 to 30/11/2025) a total of **270** Norovirus cases were reported in Welsh residents. This is a decrease **(-23.5%)** in reported cases compared to the same 12-week period in the previous year (08/09/2024 to 30/11/2024) when **353** Norovirus cases were reported.

In the last 12 weeks (08/09/2025 to 30/11/2025) 150 **(55.6%)** Norovirus cases were female and 120 **(44.4%)** cases were male. The age groups with the most cases were the **80+** (94 cases) and **70-79** (55 cases) age groups.

**Figure 17: Age and sex distribution of confirmed Norovirus cases in the last 12 weeks (08/09/2025 to 30/11/2025)**



Notes: This data from PHW only includes locally-confirmed PCR positive cases of Norovirus in Wales within the 12-week period up until the end of the current reporting week, week 48 2025 (08/09/2025 to 30/11/2025).

Under-ascertainment is a recognised challenge in norovirus surveillance with sampling, testing and reporting known to vary by health board. In addition, only a small proportion of community cases are confirmed microbiologically.

## **E. UK and International Surveillance Update**

### **E.1 [Updates on Avian Influenza in the UK](#) (up to 6 December 2025)**

#### **6 December 2025**

Highly pathogenic avian influenza (HPAI) H5N1 was confirmed at a [large commercial poultry premises near Sudbrooke, West Lindsey, Lincolnshire \(AIV 2025/122\)](#).

A 3km protection zone and 10km surveillance zone has been declared around the premises. All poultry on the premises will be humanely culled.

#### **5 December 2025**

HPAI H5N1 was confirmed at a [third large commercial poultry premises near Gainsborough, West Lindsey, Lincolnshire \(AIV 2025/121\)](#). A 3km protection zone and 10km surveillance zone has been declared around the premises. All poultry on the premises will be humanely culled.

Following successful completion of disease control activities in the zone near [Honington, West Suffolk, Suffolk \(AIV 2025/79\)](#) the protection zone has ended and the area that formed it becomes part of the surveillance zone.

#### **4 December 2025**

Following successful completion of disease control activities in the following zones:

- [near Donington, South Holland, Lincolnshire \(AIV2025/80\)](#)
- [near Easingwold, Wetherby and Easingwold, North Yorkshire \(AIV2025/81\)](#)

The protection zones have ended and the area that formed them become part of the surveillance zones.

### **E.2. [All-Wales Bluetongue \(BTV-3\) Restricted Zone](#) (30 October 2025)**

There has been no further update regarding the All-Wales Restricted Zone (RZ) for Bluetongue serotype 3 (BTV-3) since the 30<sup>th</sup> of October 2025.

### **E.3. [Mpox clade Ib and clade IIb, UK](#) (13 November)**

There has been no further update regarding UK cases of Mpox clade Ib and clade IIb since the 13<sup>th</sup> of November 2025.

### **E.4. [Seasonal surveillance of West Nile virus infection in the EU/EEA](#) (3 December)**

Since the beginning of 2025, and as of 3 December 2025, 14 countries in Europe have reported human cases of West Nile virus infection: Albania, Bulgaria, Croatia, France,



Germany, Greece, Hungary, Italy, Kosovo\*, North Macedonia, Romania, Serbia, Spain and Türkiye. A total of 157 areas are currently known to be affected.

*\*This designation is without prejudice to positions on status and is in line with UNSCR 1244/1999 and the ICJ Opinion on the Kosovo declaration of independence.*

#### **E.5. [Chikungunya virus disease](#) (3 December)**

Since the beginning of 2025 and as of 3 December 2025, two countries in Europe have reported cases of chikungunya virus disease: France (788) and Italy (384). This week, no new cases of chikungunya virus disease have been reported to ECDC.

No new locally acquired cases have been reported by France this week. France eliminated seven cases and one cluster (in Orléans) after epidemiological review. The cumulative number of locally acquired cases in France is therefore 788, distributed across 78 clusters. Three clusters are currently active, with the latest reported date of onset 30 October. The largest cluster is located in Antibes.

No new locally acquired cases were reported by Italy this week. Italy discarded one case and its cluster (in Scanzano Jonico). The cumulative number of locally acquired cases in Italy is therefore 384, distributed across six clusters. Two clusters are currently active, with the latest reported date of onset 11 November. The largest cluster is located across the towns of Carpi, San Prospero, Soliera, Novellara, Cavezzo, Modena, Nonantola, Correggio, Novi di Modena, and Cesenatico.

As further cases are unlikely, given the current unfavourable seasonal weather conditions for vector-borne transmission, ECDC is concluding its weekly reports for the 2025 season.

#### **E.6. [Ebola virus disease - Democratic Republic of the Congo - 2025](#) (3 December)**

On 1 December 2025, WHO published a Disease Outbreak News (DON) Item announcing the end of the Ebola virus disease outbreak in DRC. According to the DON, no new cases have been detected in the past 42 days, since the last confirmed case was discharged from treatment on 19 October 2025. The country is now beginning a 90- day period of enhanced disease surveillance.

On 19 October 2025, WHO announced that the last Ebola virus disease patient in DRC was discharged and initiated the 42-day countdown for declaring the outbreak over. A total of 19 patients recovered from the disease (29.7%) and the last case was reported on 26 September. All 1 735/1 787 (97.3%) contacts that were followed up, completed their monitoring.

#### **E.7. [Rift Valley fever in Senegal and Mauritania – 2025](#) (Last update: 21 November)**

As of 20 November, 482 human cases (including 31 deaths) of Rift Valley fever (RVF) have been reported in Senegal.

Since 27 September 2025, and as of 9 November, 52 human cases (including 14 deaths) of RVF have been reported in Mauritania.

On 5 November, media quoting health officials reported one human case of RVF in The Gambia, close to the border with Senegal.

All three countries have reported outbreaks among livestock.

To date, no human-to-human transmission of RVF has been documented.

#### **E.8. [Influenza A\(H5N1\) – Multi-country \(World\) – Monitoring human cases](#) (Last update: 28 November)**

On 25 November 2025, a fatal human case of avian influenza A(H5N1) virus infection was reported in an adult man from Chroy Changvar District in the autonomous municipality of Phnom Penh, Cambodia.

The infection was laboratory-confirmed on 24 November 2025, and the patient passed away the same day.

Since 2003, and as of 17 November 2025, a total of 993 confirmed human cases of A(H5N1) have been reported worldwide, including 476 deaths (case fatality rate (CFR): 48%). Of these, 90 cases were reported from Cambodia, including 52 deaths (CFR: 58%).

ECDC's risk assessment for A(H5N1) remains unchanged, overall, the risk related to zoonotic influenza for the general population in the EU/EEA is considered low.

#### **E.9. [Influenza A\(H5N5\) – Multi-country \(World\) – Monitoring human cases](#) (Last update: 28 November)**

The first human case of avian influenza A(H5N5) has been confirmed in Washington State, USA.

The case, an older adult with underlying conditions, was hospitalised in early November 2025 and died on 21 November 2025. The likely source of exposure is mixed backyard poultry that had contact with wild birds.

The US CDC assesses the risk of avian influenza A(H5) to the general public as low.

HPAI A(H5N5) has recently been circulating in wild birds in northern Europe, with occasional detections and outbreaks in wild mammals and domestic poultry.

The virus was identified as belonging to clade 2.3.4.4b, genotype A6/EA-2021-I, which has been detected in birds and mammals in North America. No markers associated with mammalian adaptations of significance were observed.

#### **E.10. [Marburg virus disease \(MVD\) - Ethiopia - 2025](#) (3 December)**

Since 28 November 2025, there has been one additional confirmed case of Marburg Virus Disease (MVD) reported in Ethiopia. The total number of contacts listed is 349, of which 119 (34.1%) have completed their monitoring, according to a press release from the Ethiopian Public Health Institute on 26 November 2025.

Since the outbreak was confirmed on 14 November 2025 and as of 4 December 2025, 16 cases (13 laboratory confirmed and three probable) of Marburg Virus Disease (MVD) have been reported in Ethiopia, according to the Ministry of Health. A total of 11 deaths have been reported, eight of which have been in laboratory-confirmed cases and three in probable cases (case fatality rate (CFR) among confirmed cases: 61.5%). According to media, the deaths include two healthcare workers.

Cases have presented with symptoms including sudden fever, muscle pain, severe fatigue, headache, diarrhoea, vomiting and, in later stages, unexplained bleeding. As of 4 December, a total of four cases have recovered and one is being treated, according to the Ministry of Health.

Cases have been reported in two regions; Jinka city, Omo Zone, South Ethiopia Regional State and Hawassa City, Sidama Region. Jinka city, is considered the epicentre of the outbreak, according to Africa CDC. According to media quoting the Ethiopian Ministry of Health on 27 November, one of the cases was confirmed in Hawassa City, Sidama Region, after returning from Jinka City.

On 14 November 2025, the Ministry of Health of Ethiopia confirmed an MVD outbreak in Jinka city, southern Ethiopia and reported that there were 17 suspected cases. Jinka is in south-west Ethiopia, which is close to the border with South Sudan and Kenya. Jinka is a small market town with about 30 000 inhabitants. It is also the capital of South Omo region and a tourist hub for the area. It is two days away from Addis Ababa. A small airport has recently been inaugurated there.

According to WHO, the virus strain shows similarities to those previously identified in East Africa.

The likelihood of exposure to MVD for EU/EEA citizens visiting or living in Ethiopia is assessed as low, with uncertainties connected to the limited epidemiological information available. The impact, assessed at population level, is low since the number of MVD cases in EU/EEA citizens in Ethiopia is expected to be very small. Therefore, the overall risk for EU/EEA citizens visiting or living in Ethiopia is low.

In the event of MVD cases being imported into the EU/EEA, we consider the likelihood of further transmission to be very low, and the associated impact low. Therefore, the overall risk for the EU/EEA is assessed as low.

**E.11. [Mers-CoV – France ex. Arabian Peninsula - 2025](#) (3 December)**

**Summary:** On 3 December 2025, the French Ministry of Health reported two imported human Middle East respiratory syndrome coronavirus (MERS-CoV) cases with travel history to the Arabian Peninsula. The two cases were part of the same group trip. The following measures have been taken: identifying and monitoring of close contacts, contacting and monitoring high-risk contacts and testing (pauci-)symptomatic persons. No secondary cases have been identified so far.

**Background:** Since the beginning of 2025, and as of 1 December 2025, 12 MERS-CoV cases have been reported in Saudi Arabia with date of onset in 2025, including three fatalities. Since April 2012, and as of 1 December 2025, a total of 2 640 cases of MERS-CoV, including 958 deaths, have been reported by health authorities worldwide. The majority of these have been reported in the Middle East, with the latest imported case in the EU/EEA in 2014 and the latest imported case in Europe in 2018, prior to the new cases.