



Llywodraeth Cymru
Welsh Government

Science Evidence Advice

Weekly Surveillance Report

22 December 2025



gov.wales

OGL

© Crown copyright 2025

Science Evidence Advice: Weekly Surveillance Report

A. Top Line Summary (as at week 50 2025, up to 14 December 2025)

- Overall, COVID-19 confirmed case admissions to hospital **increased**.
- COVID-19 cases who are inpatients have **increased**.
- RSV activity in children under 5 years has **decreased**.
- Influenza in-patient cases have **increased** and admissions have **decreased** in the latest week.
- Norovirus confirmed cases have **increased** in the most recent week (week 50).
- Whooping Cough notifications have **decreased** in week 49 (the most recent reporting week).
- Scarlet Fever notifications are **fluctuating** in recent weeks (up to week 50).

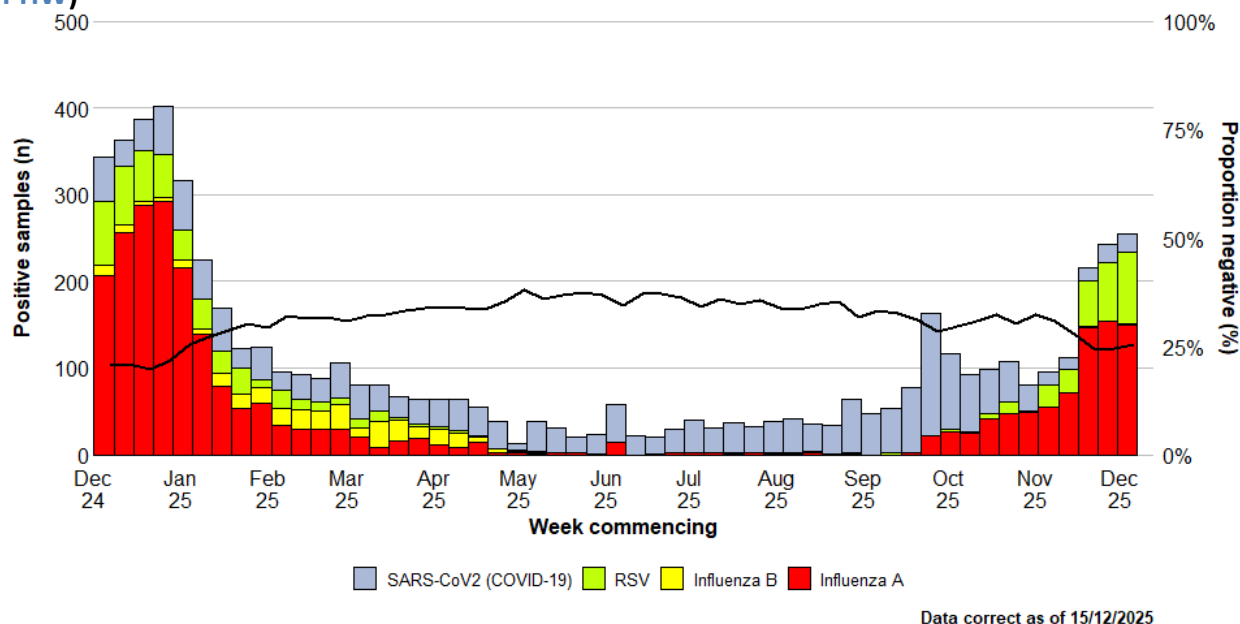
Please note there will be no Weekly Surveillance Report published in the week commencing 29th December 2025.

B. Acute Respiratory Infections Situation Update

B1. COVID-19 Situation Update

- At a national level, the weekly number of confirmed cases of community-acquired admissions to hospital **increased** and the number of cases who were inpatients **increased** in week 50 2025 (to 14 December 2025).
- As of 14 December 2025 (week 50), the number of confirmed cases of community acquired COVID-19 admitted to hospital **increased** to 22 (16 in the previous week) and there were 108 in-patient cases of confirmed COVID-19, four of whom were in critical care compared to 105 and three in the previous week.
- Confirmed cases of positive tests remained stable at 2.9 % in hospital and non-sentinel GP practices in the most recent week (week 50). Consultations with Sentinel GPs and sentinel community Pharmacies for COVID-19 remained stable in the most recent week.
- In the last six weeks, Omicron XFG.3 is the most frequently detected variant in Wales currently, accounting for **31.8%** of sequenced cases.

Figure 1: Samples from hospital patients submitted for RSV, Influenza and SARS-CoV2 testing only, by week of sample collection, week 50, 2024 to Week 50, 2025. (source: PHW)



COVID-19, Respiratory Syncytial Virus (RSV) and Influenza Short Term Projections

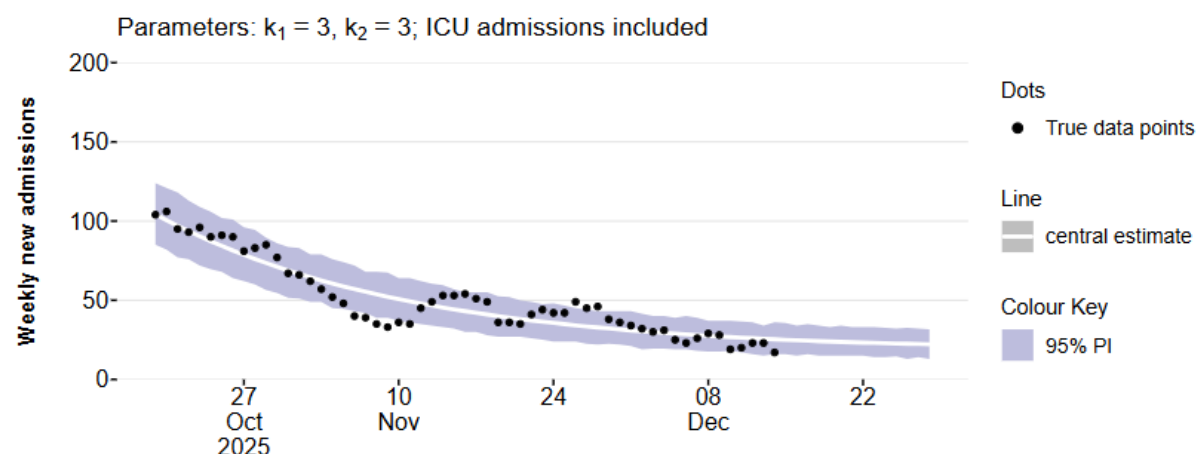
The Science Evidence Advice (SEA) team at Welsh Government have produced short term projections (STPs) for COVID-19, RSV and Influenza which can be produced nationally and at the Local Health Board level. RSV is also produced by age groups nationally. STPs project 2 weeks forward using current data from the previous 8 weeks, and do not explicitly factor in properties of the infectious disease, policy changes, changes in testing, changes in behaviour, emergence of new variants or rapid changes in vaccinations.

COVID-19, RSV and Influenza STPs use admissions data from PHW until **13 December 2025** to make short term projections for COVID-19 two weeks forward **(to 27 December 2025)**. The black or brown dots represent the actual data points while the white line is the central estimate from the most recent projection. The colour shadings represent the 95% confidence interval of the projections.

Please note: The STPs are produced nationally and at the provider health board level, not at resident health board level. Powys health board is not included in the analysis due to low numbers.

The STPs for Wales show that COVID-19 admissions are projected to plateau over the next two-week period (Figure 2).

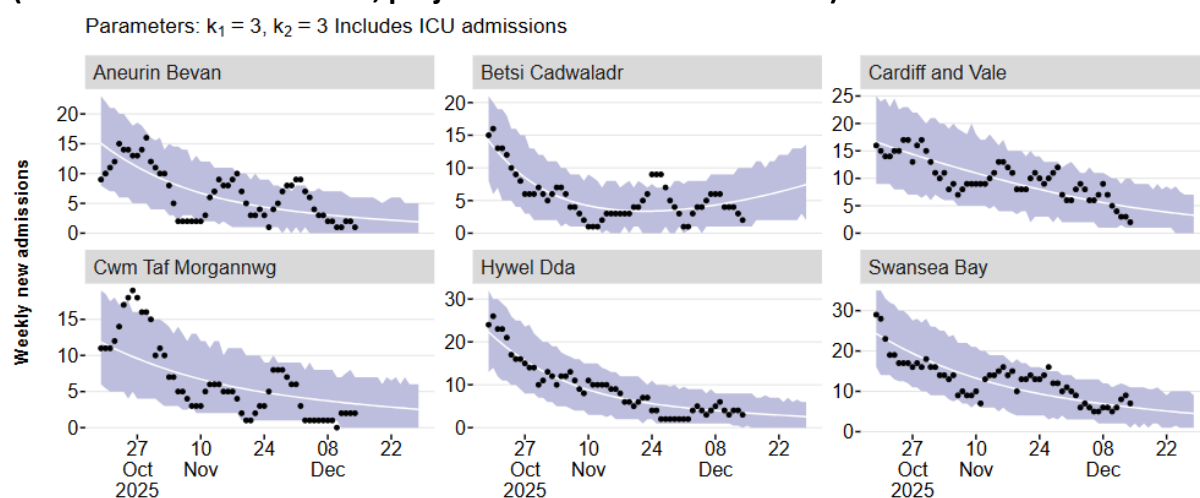
Figure 2: Short Term Projection for COVID-19 hospital admissions in Wales (data to 13 December 2025, projection to 27 December 2025)



Source: Public Health Wales

Figure 3 shows that COVID-19 admissions are projected to approximately plateau in health boards in Wales except Swansea Bay (decrease) and Betsi Cadwaladr (increase) over the next two weeks (to 27 December 2025).

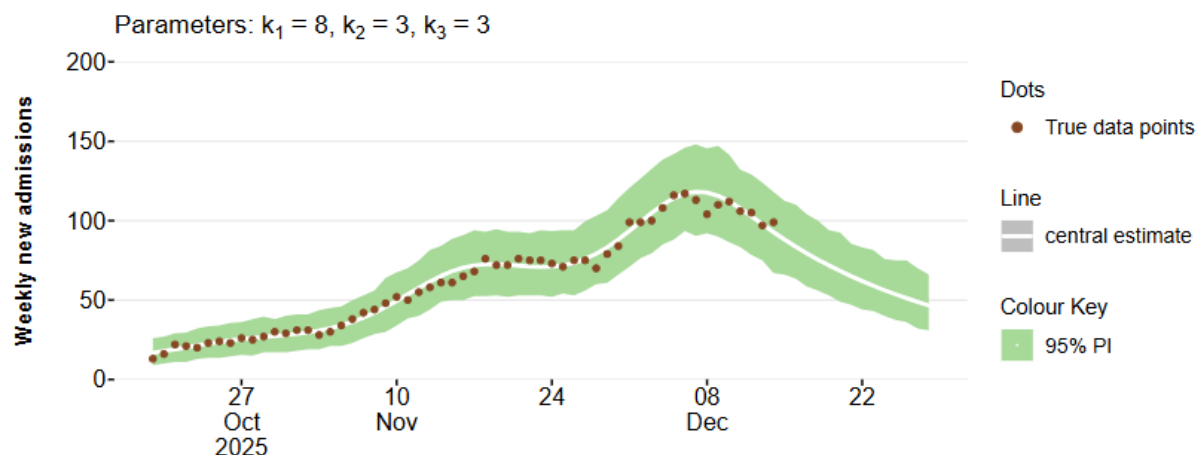
Figure 3: Short Term Projections for COVID-19 hospital admissions in Wales Health Boards (data to 13 December 2025, projections to 27 December 2025)



Source: Public Health Wales

The STPs for Wales show that RSV admissions are projected to decrease over the next two-week period (Figure 4).

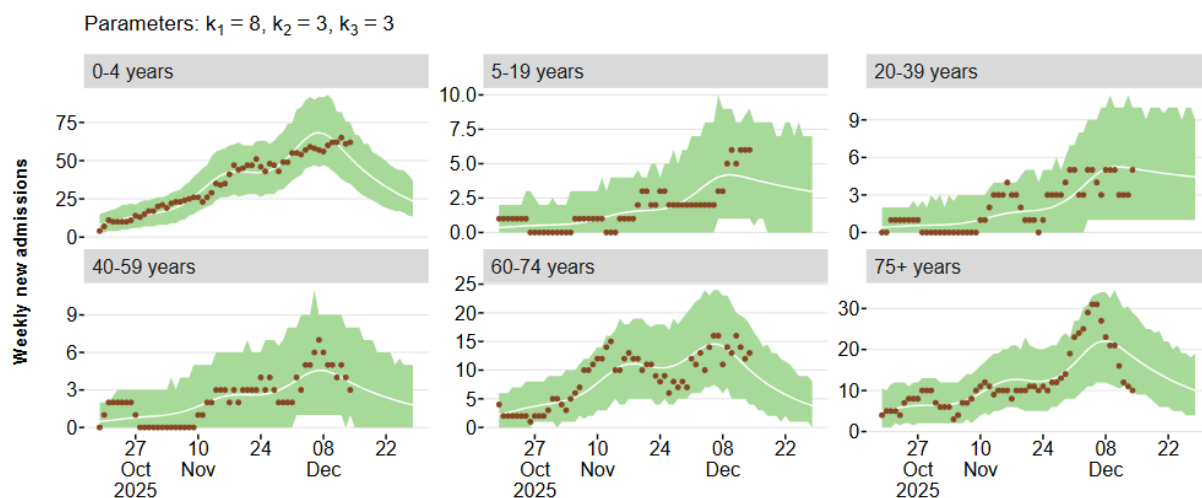
Figure 4: Short Term Projection for RSV hospital admissions in Wales (data to 13 December 2025, projection to 27 December 2025)



Source: Public Health Wales

Figure 5 shows that RSV admissions for all age groups are projected to decrease over the next two weeks (to 27 December 2025).

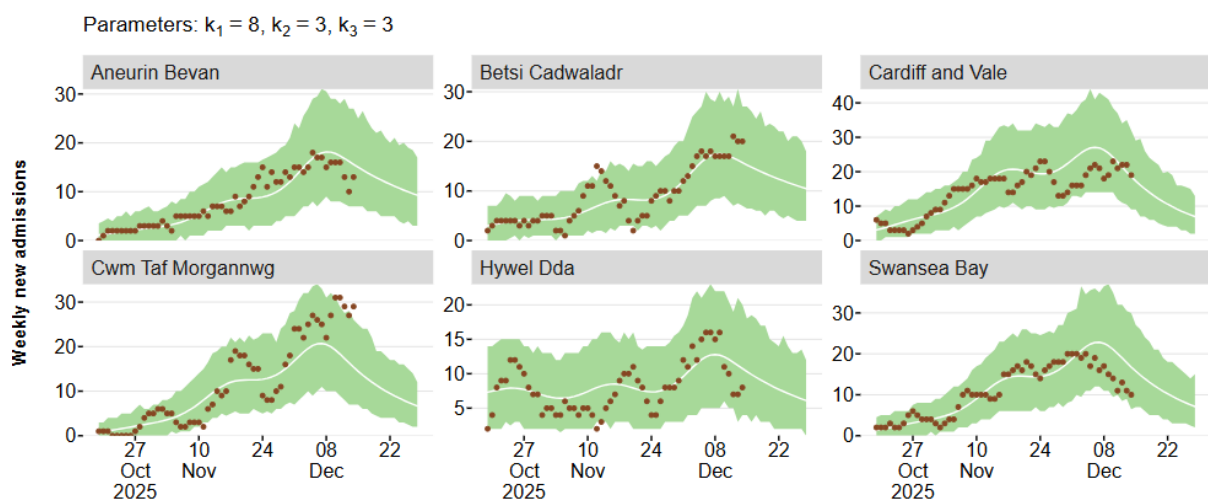
Figure 5: Short Term Projections for RSV hospital admissions in Wales by age groups (data to 13 December 2025, projections to 27 December 2025)



Source: Public Health Wales

Figure 6 shows that RSV admissions for all health boards are projected to decrease over the next two weeks (to 27 December 2025).

Figure 6: Short Term Projections for RSV hospital admissions in Wales Local Health Boards (data to 13 December 2025, projections to 27 December 2025)



The STPs for Wales show that Influenza admissions are projected to increase over the next two-week period (Figure 7).

Figure 7: Short Term Projection for Influenza hospital admissions in Wales (data to 13 December 2025, projection to 27 December 2025)

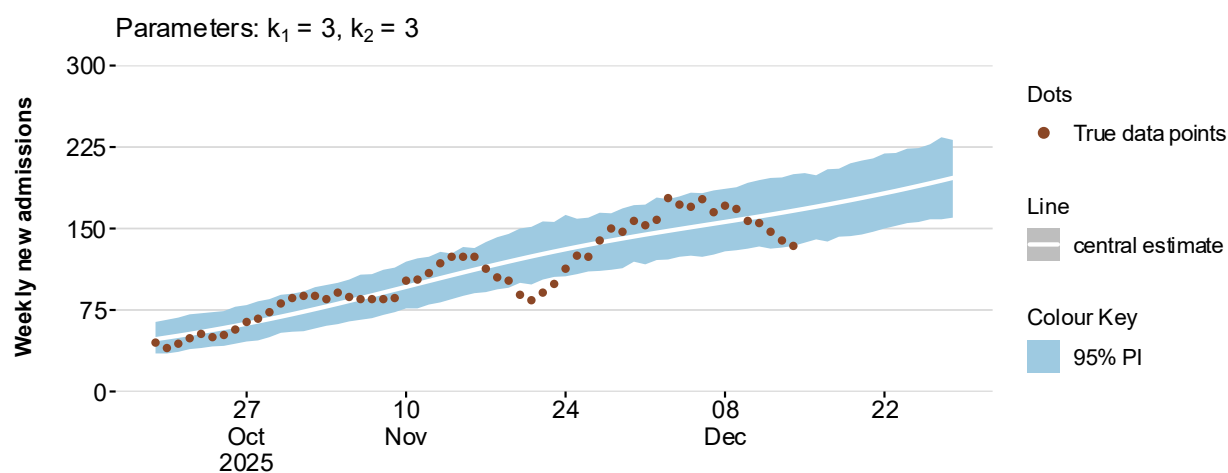
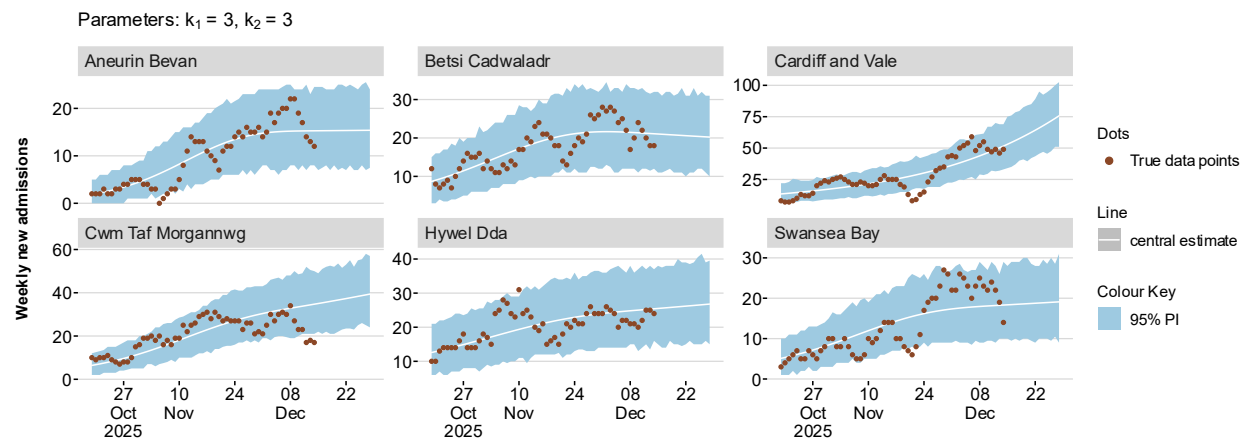


Figure 8 below shows that Influenza admissions are projected to increase or plateau in all health boards in Wales over the next two weeks (to 27 December 2025).

Figure 8: Short Term Projections for Influenza hospital admissions in Wales Local Health Boards (data to 13 December 2025, projections to 27 December 2025)

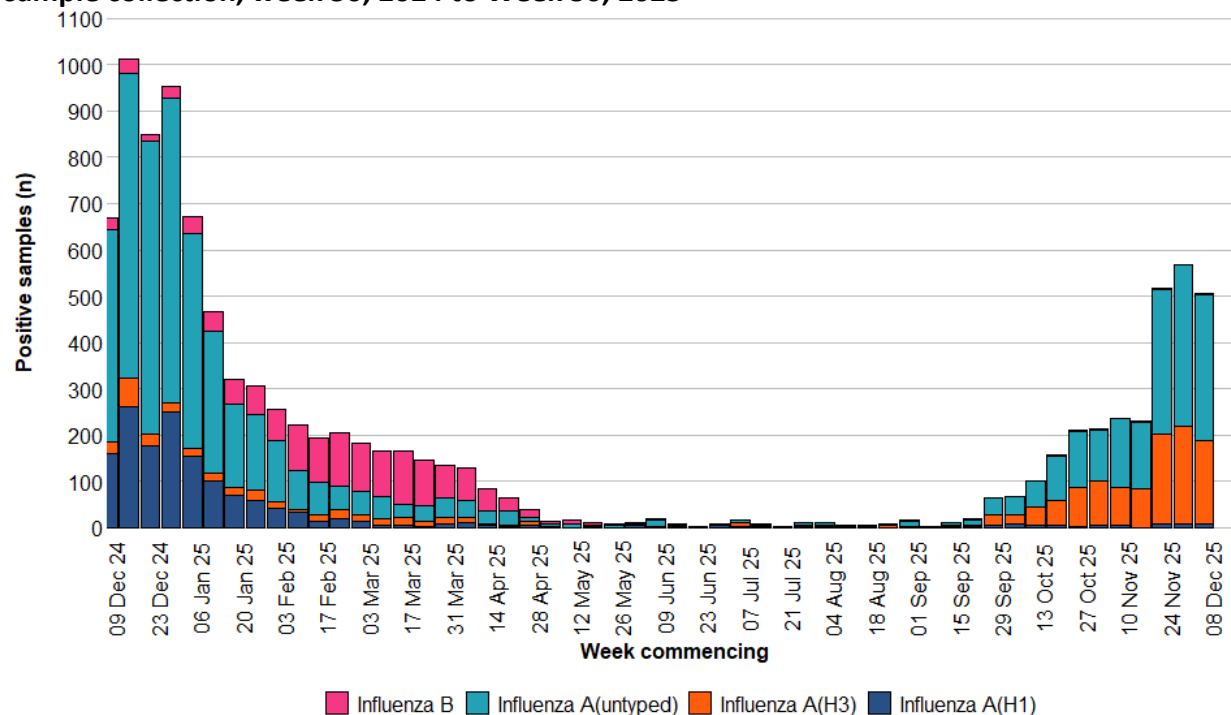


Source: Public Health Wales

B.2. Influenza Situation Update

- Influenza activity is at medium levels, with case numbers continuing to increase. Consultations for influenza-like illness (ILI) with sentinel GPs increased and are at medium intensity.
- Confirmed cases of community acquired influenza admitted to hospital decreased to **152** in the current week (compared to **163** in the previous week). Test positivity increased to **18.7%**.
- There were **278** in-patient cases of confirmed influenza, five of whom were in critical care compared to **254** and **12** in the previous week.
- In week 50 2025, there were 181 confirmed cases of influenza A(H3), eight influenza A(H1N1), 313 influenza A untyped and three influenza B. (Figure 9).

Figure 9: Influenza subtypes based on samples submitted for virological testing by Sentinel GPs and community pharmacies, hospital patients, and non-Sentinel GPs, by week of sample collection, week 50, 2024 to Week 50, 2025



Data correct as of 15/12/2025

(source: [PHW](#))

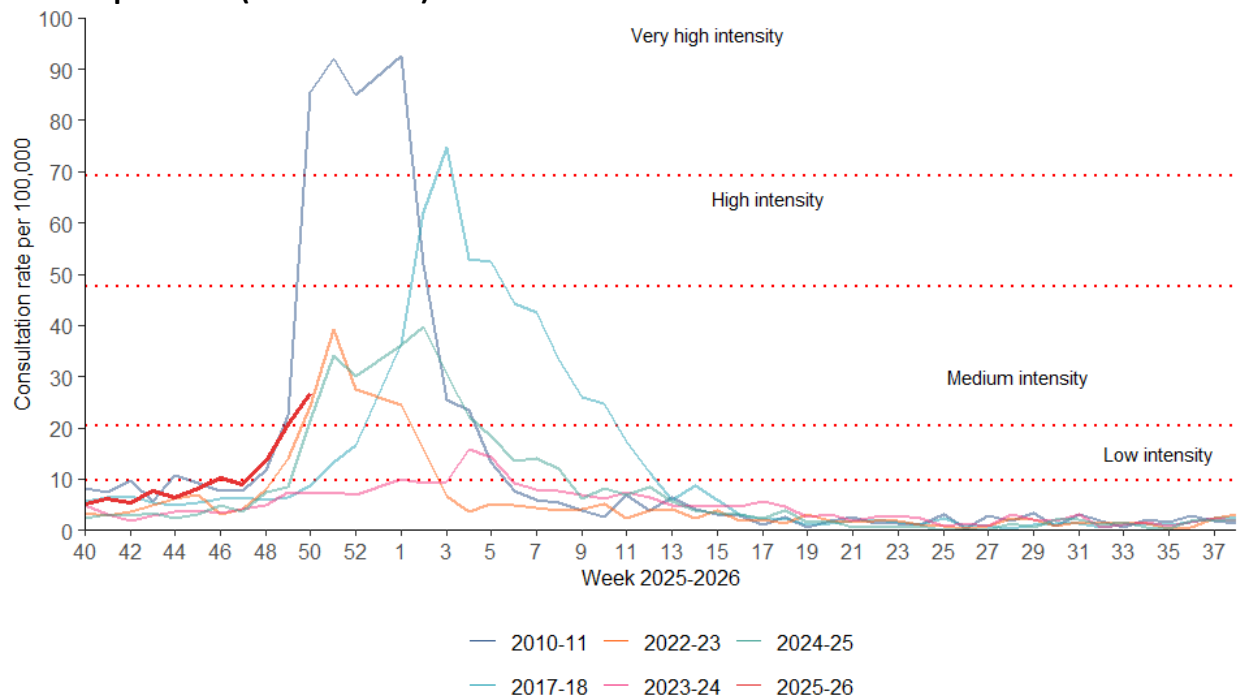
The sentinel GP consultation rate for influenza-like illness (ILI) is at medium intensity and the three-week trend is increasing.

There were **26.8** ILI consultations per 100,000 practice population in the most recent week, an increase compared to the previous week (20.8 consultations per 100,000).

In the most recent week, using all available data from general practices, there were 14.5 ARI consultations per 100,000 practice population, an increase from 11.9 in the previous week. The highest rates were found in people aged under 1 year (1,392.7) followed by people aged 1 to 4 (1,231.5) and people aged 5 to 14 (368.9).

Surveillance indicators for acute respiratory infections in GP consultation data in Wales are decreasing in people aged under 5 years.

Figure 10: Clinical consultation rate for ILI per 100,000 practice population in Welsh sentinel practices (source: PHW)



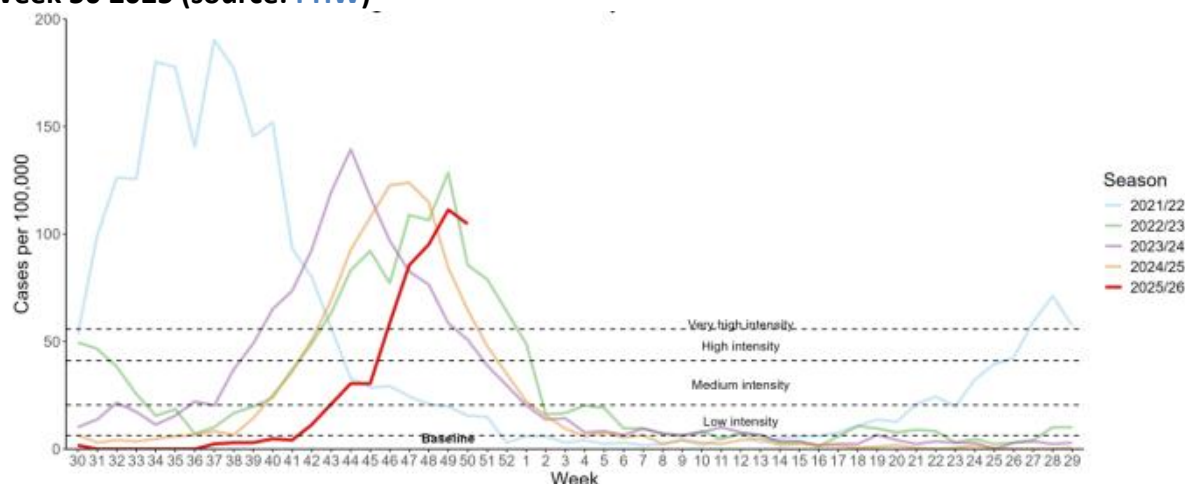
Data correct as of 16/12/2025

B.3. Respiratory Syncytial Virus (RSV) update

The number of confirmed cases of community acquired RSV admitted to hospital decreased to 123 in Week 50.

Incidence per 100,000 in children aged up to 5 years **decreased** to **104.7** in the most recent week (111.3 in the previous week) but remains at very high intensity levels. During Week 50 there were 114 in-patient cases of confirmed RSV, and nine in critical care.

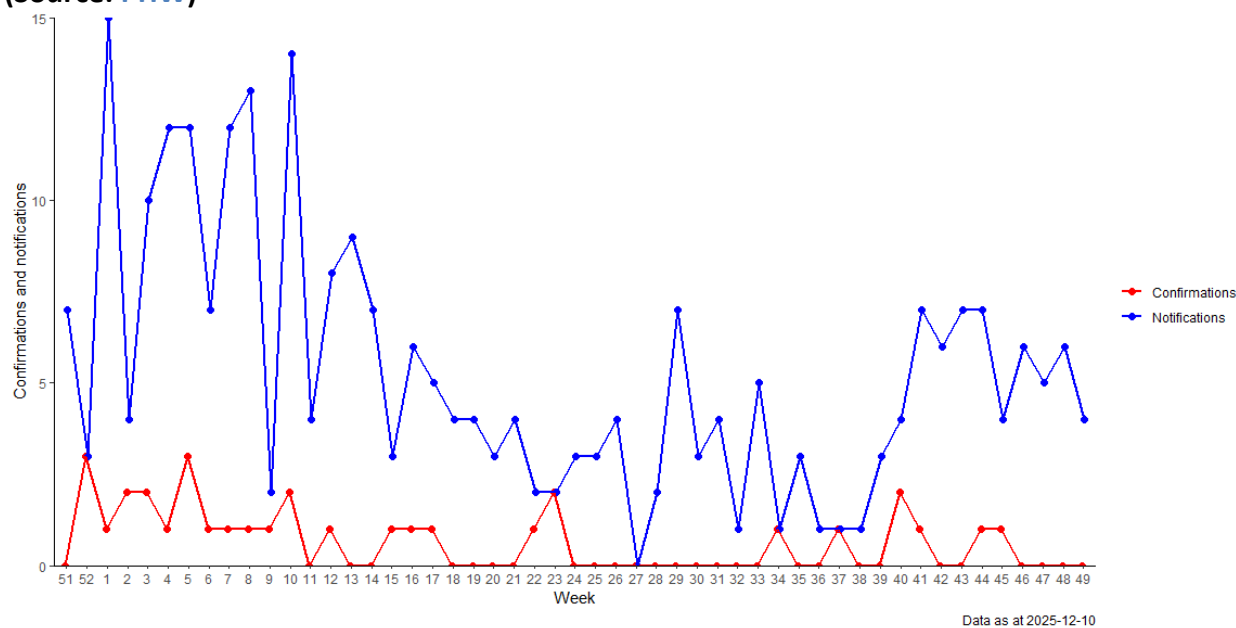
Figure 11: RSV Incidence Rate per 100,000 population under 5 years, weeks 30 2020 to Week 50 2025 (source: PHW)



B.4. Whooping Cough (Pertussis)

Figure 12 below shows that whooping cough notifications up to the end of week 49 **decreased**. Lab confirmations continue to be at very low levels (Whooping cough is now reported on every two weeks).

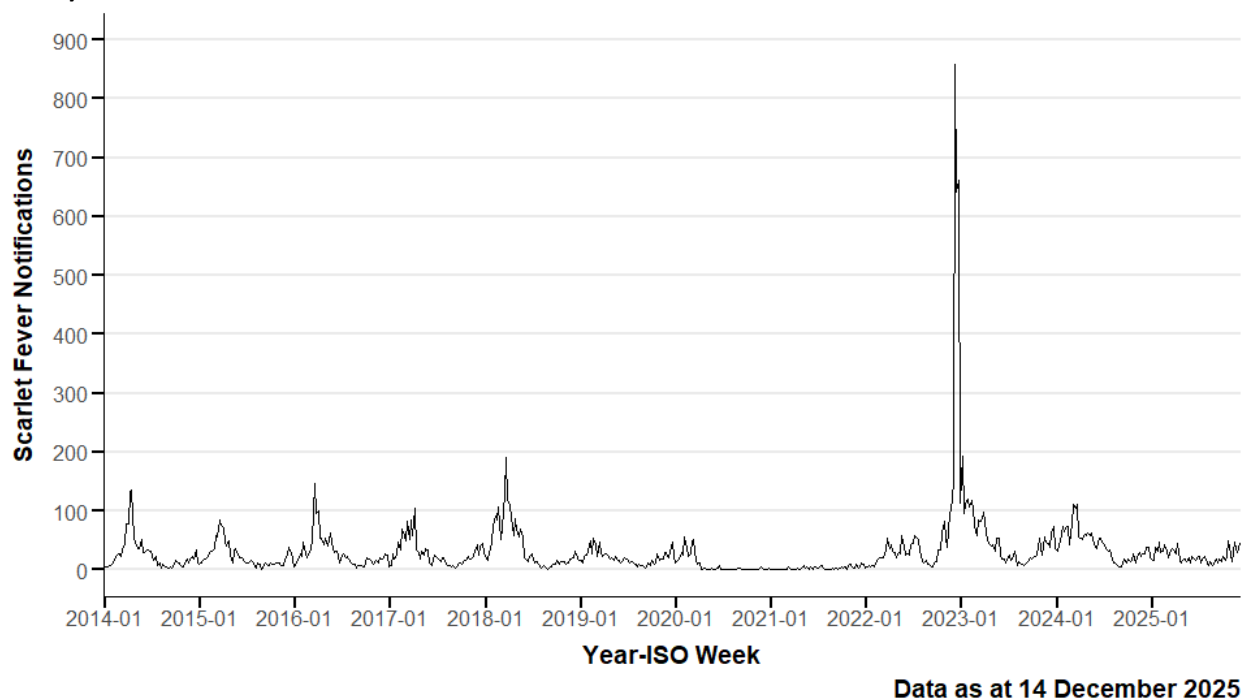
Figure 12: Weekly notifications and confirmations of Pertussis/Whooping Cough in Wales. (Source: PHW)



B.5 iGAS and Scarlet Fever

The number of iGAS notifications is currently low, remaining at seasonally expected levels. Scarlet Fever notifications are **fluctuating** in recent weeks (up to week 50) as shown in the figure below.

Figure 13: Rolling 3 Week Average Scarlet Fever Notifications, 2014-2025, Wales (source: PHW)



B.6 Additional indicators

- The number of ambulance calls recorded referring to syndromic indicators decreased from **1,543** in the previous week to **1,248** in the latest reporting week.
- During Week 50, 2025, 11 ARI outbreaks were reported to the Public Health Wales Health Protection Team. Of these, one was Influenza A, one was Influenza A with Rhinovirus/Enterovirus, three were Influenza-Like Illness, one was Respiratory Covid-19/Influenza, one was Rhinovirus/Parainfluenza, one was RSV, one was Diarrhoea and Vomiting with Influenza-Like Illness, one was Influenza untyped and one was Influenza-Like Illness with Scarlet Fever. Seven were in residential care homes and four were in School/Nursery/Day Care.
- Thus far this season, According to European Mortality Monitoring (EuroMoMo) methods, no excess has been reported in the weekly number of deaths from all causes in Wales.

C. Science Evidence Advice Winter Modelling

The Science Evidence Advice (SEA) team in Welsh Government have published modelled scenarios for COVID-19, RSV and Influenza for [Winter 2025-26](#).

This uses analysis of historical data to estimate what we may see in winter 2025/26 in terms of hospital admissions and hospital bed occupancy in Wales, contributing to winter planning for NHS Wales.

The charts that follow (Figures 14-16) show estimates of hospital admissions occurring so far in winter 2025/26 using actual data and these are compared to our 2025/26 winter

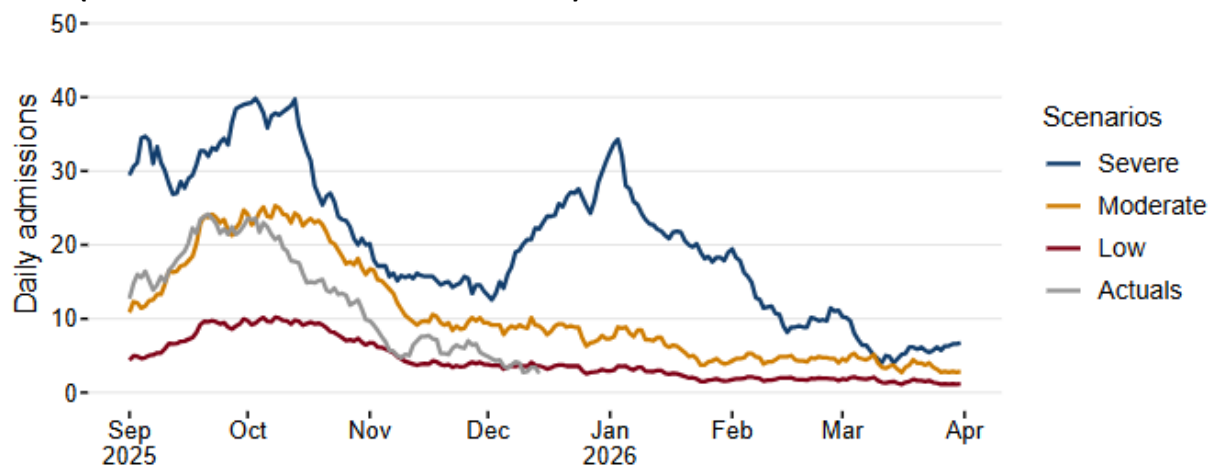
modelling scenarios. (See the technical notes at the end of section **C. Science Evidence Advice Winter Modelling** for details on how the ‘actuals’ were estimated).

Note that modelling is an estimate of what may happen, not a prediction of what will happen.

COVID-19

COVID-19 admissions are fluctuating and are currently around the Low scenario.

Figure 14 Daily COVID-19 Winter 2025-26 admissions scenarios, modelling to 31 March 2026 (actuals data until 13 December 2025)



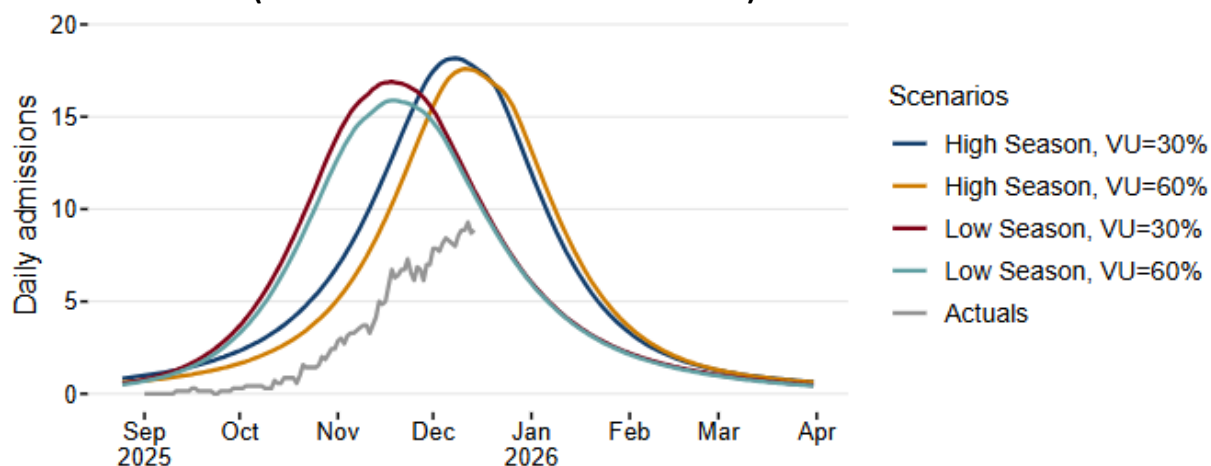
Source: historical data to 31 March 2025 provided by DHCW, projected scenarios from 1 September 2025 to 31 March 2026 from SEA, actuals data until 13 December 2025 from PHW.

Notes: Scenarios repeat previous year's data from Digital Health and Care Wales. Includes ICD-10 codes U071, U072, U099, U109.

RSV

RSV admissions (ages 0-4 years) actuals may have peaked and are currently tracking below all Scenarios.

Figure 15: Daily RSV Winter 2025-26 paediatric (ages 0-4) admissions scenarios, modelling to 31 March 2026 (actuals data until 13 December 2025)

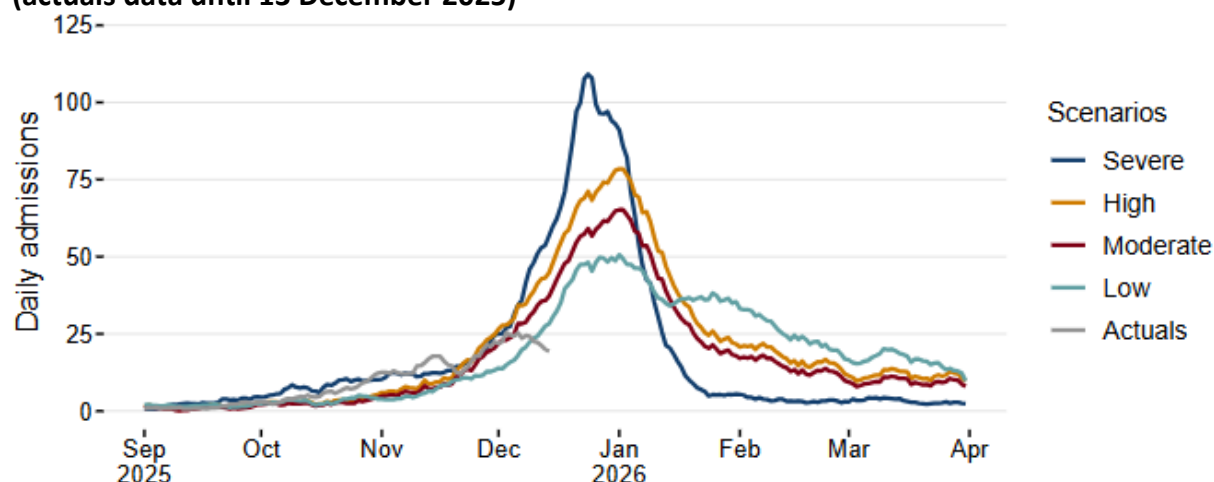


Source: historical data to 31 March 2025 provided by DHCW, projected scenarios from 1 September 2025 to 31 March 2026 from SEA, actuals data until 13 December 2025 from PHW.

Influenza

Influenza (flu) admissions actuals may have peaked and are currently tracking below the Low scenario.

Figure 16: Daily flu winter 2025-6 admissions scenarios, modelling to 31 March 2026 (actuals data until 13 December 2025)



Source: historical data to 31 March 2025 provided by DHCW, projected scenarios from 1 September 2025 to 31 March 2026 from SEA, actuals data until 13 December 2025 from PHW.

Technical Notes

The winter modelling used hospital admissions data from the Patient Episode Data for Wales (PEDW) dataset provided by Digital Health and Care Wales (DHCW). However, due to a lag in clinical coding and receiving PEDW data from DHCW, the ICNET admissions data provided by Public Health Wales (PHW) were used for the actuals. The data sources differ for a few reasons: the flu and RSV data from PHW includes lab-confirmed results only and includes inpatients only. The PEDW data from DHCW is based on [International Classification of Diseases version 10](#) (ICD-10) codes.

Modelling scenario details:

- **COVID-19:** Data includes ICD-10 codes U071, U072, U099, U109. Two scenarios repeat recent year's data from Digital Health and Care Wales, and one is calculated by applying a statistical technique.

Names of COVID-19 scenarios and the statistical model applied

Scenario name	Technique
Severe	Repeat of 2023/2024 data
Moderate	Repeat of 2024/2025 data
Low	SARIMA

- **RSV:** Data includes ICD-10 codes J121, J205, J210, B974.

Names of RSV scenarios, model assumptions

Scenario name	Reference Season	Vaccine uptake (VU)
High season, VU= 30%	2022/23 winter	30%
High season, VU= 60%	2022/23 winter	60%
Low season, VU= 30%	2023/24 winter	30%
Low season, VU= 60%	2023/24 winter	60%

- **Flu:** Data includes ICD-10 codes J09X, J100 to J102, J110, J108, J111, J112, J118.

Names of influenza scenarios and the statistical models applied

Scenario name	Technique
Severe	Repeat of 2022/23 data
High	Repeat of 2024/25 data
Moderate	SARIMA
Low	ETS

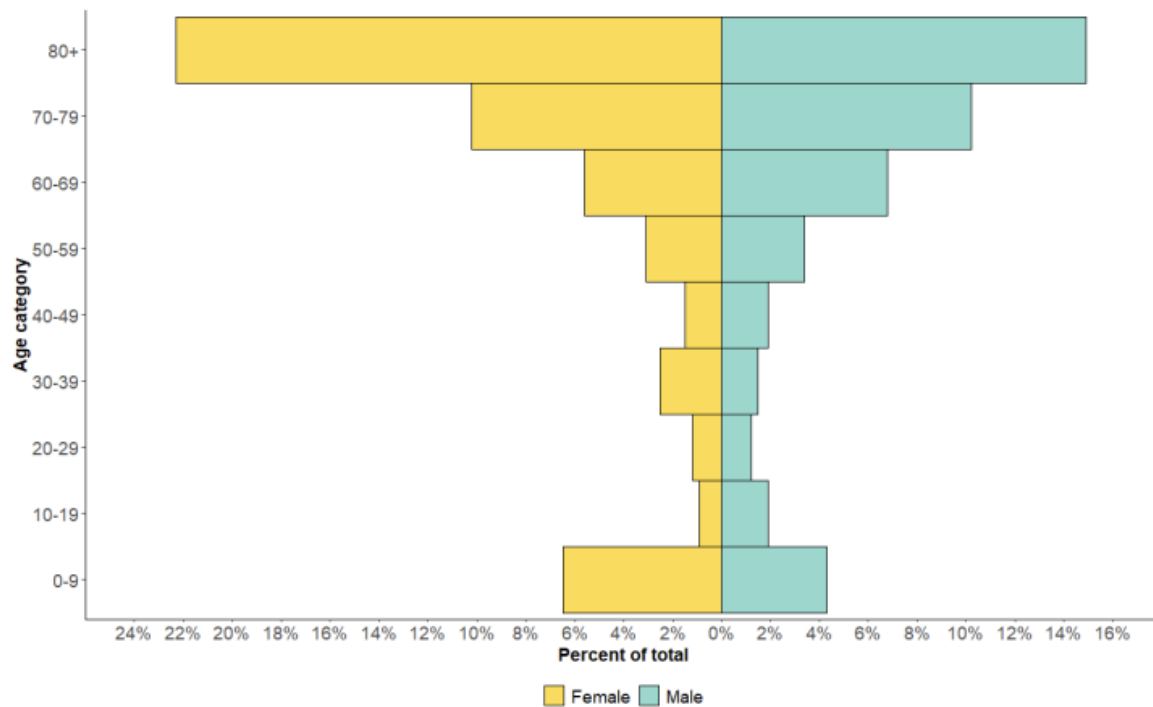
D. Communicable Disease Situation Update (non-respiratory)**D.1 Norovirus**

In the current reporting week (week 50 2025), a total of **50** Norovirus cases were reported in Welsh residents. This is an increase **(100.0%)** in reported cases compared to the previous reporting week (week 49 2025), when **25** Norovirus cases were reported.

In the last 12-week period (22/09/2025 to 14/12/2025) a total of **323** Norovirus cases were reported in Welsh residents. This is a decrease **(-22.0%)** in reported cases compared to the same 12-week period in the previous year (22/09/2024 to 14/12/2024) when **414** Norovirus cases were reported.

In the last 12 weeks (22/09/2025 to 14/12/2025) 174 **(53.9%)** Norovirus cases were female and 149 **(46.1%)** cases were male. The age groups with the most cases were the **80+** (120 cases) and **70-79** (66 cases) age groups.

Figure 17: Age and sex distribution of confirmed Norovirus cases in the last 12 weeks (22/09/2025 to 14/12/2025)



Notes: This data from PHW only includes locally-confirmed PCR positive cases of Norovirus in Wales within the 12-week period up until the end of the current reporting week, week 50 2025 (22/09/2025 to 14/12/2025).

Under-ascertainment is a recognised challenge in norovirus surveillance with sampling, testing and reporting known to vary by health board. In addition, only a small proportion of community cases are confirmed microbiologically.

E. UK and International Surveillance Update

E.1 Updates on Avian Influenza in the UK (up to 21 December 2025)

21 December 2025

Highly pathogenic avian influenza (HPAI) H5N1 was confirmed at a large commercial poultry flock near [Market Rasen, West Lindsey, Lincolnshire \(AIV 2025/131\)](#) on 21 December 2025.

A 3km protection zone and 10km surveillance zone has been declared around the premises. All poultry on the premises will be humanely culled.

20 December 2025

Highly pathogenic avian influenza (HPAI) H5N1 was confirmed in a backyard flock near [Bicester, Cherwell, Oxfordshire \(AIV 2025/129\)](#) on 20 December 2025.

A 3km captive bird (monitoring) controlled zone has been declared around the premises. All poultry on the premises will be humanely culled.

Highly pathogenic avian influenza (HPAI) H5N1 was confirmed at a second large commercial poultry flock near [Dereham, Breckland, Norfolk \(AIV 2025/130\)](#) on 20 December 2025.

A 3km protection zone and 10km surveillance zone has been declared around the premises. All poultry on the premises will be humanely culled.

19 December 2025 (second update)

Following successful completion of disease control activities and surveillance within the zone surrounding a premises near [Feltwell, King's Lynn and West Norfolk, Norfolk \(AIV 2025/90\)](#), the surveillance zone has been revoked.

Following successful completion of disease control activities and surveillance in the zone around a premises near [Lakenheath, West Suffolk, Suffolk \(AIV 2025/70\)](#), the surveillance zone has been revoked.

19 December 2025

Following successful completion of disease control activities and surveillance within the zone surrounding a premises near [Feltwell, King's Lynn and West Norfolk, Norfolk \(AIV 2025/90\)](#), the protection zone has ended and the area that formed it becomes part of the surveillance zone.

18 December 2025

Highly pathogenic avian influenza (HPAI) H5N1 was confirmed in a large commercial poultry flock near [Brockworth, Tewkesbury, Gloucestershire \(AIV 2025 127\)](#) on 18 December 2025. A 3km protection zone and 10km surveillance zone has been declared around the premises. All poultry on the premises will be humanely culled.

The CVO Scotland has confirmed a case of highly pathogenic avian influenza (HPAI) H5N1 in a large commercial poultry flock near [Penicuik, Scottish Borders, Scotland \(AIV 2025 128\)](#) on 18 December 2025. A 3km protection zone and 10km surveillance zone has been declared around the premises. All poultry on the premises will be humanely culled.

17 December 2025

Following successful completion of disease control activities and surveillance in the zone around a [premises near Uckfield, Wealden, East Sussex \(AIV 2025/77\)](#), the surveillance zone has been revoked.

16 December 2025

Following successful completion of disease control activities and surveillance in the zone around a commercial poultry [premises near Brandon, West Suffolk, Suffolk \(AIV 2025/72\)](#), the surveillance zone has been revoked.

Following successful completion of disease control activities in the zone [near Honington, West Suffolk, Suffolk \(AIV 2025/79\)](#), the surveillance zone has been revoked.

6 December 2025

Highly pathogenic avian influenza (HPAI) H5N1 was confirmed at a [large commercial poultry premises near Sudbrooke, West Lindsey, Lincolnshire \(AIV 2025/122\)](#).

A 3km protection zone and 10km surveillance zone has been declared around the premises. All poultry on the premises will be humanely culled.

5 December 2025

HPAI H5N1 was confirmed at a [third large commercial poultry premises near Gainsborough, West Lindsey, Lincolnshire \(AIV 2025/121\)](#). A 3km protection zone and 10km surveillance zone has been declared around the premises. All poultry on the premises will be humanely culled.

Following successful completion of disease control activities in the zone near [Honington, West Suffolk, Suffolk \(AIV 2025/79\)](#) the protection zone has ended and the area that formed it becomes part of the surveillance zone.

4 December 2025

Following successful completion of disease control activities in the following zones:

- [near Donington, South Holland, Lincolnshire \(AIV2025/80\)](#)
- [near Easingwold, Wetherby and Easingwold, North Yorkshire \(AIV2025/81\)](#)

The protection zones have ended and the area that formed them become part of the surveillance zones.

E.2. [All-Wales Bluetongue \(BTV-3\) Restricted Zone](#) (30 October 2025)

There has been no further update regarding the All-Wales Restricted Zone (RZ) for Bluetongue serotype 3 (BTV-3) since the 30th of October 2025.

E.3. [Mpox clade Ib and clade IIb, UK](#) (13 November)

There has been no further update regarding UK cases of Mpox clade Ib and clade IIb since the 13th of November 2025.

E.4. [Seasonal surveillance of West Nile virus infection in the EU/EEA](#) (10 December)

In 2025, and as of 10 December 2025, 14 countries in Europe have reported 1,112 locally acquired human cases of WNV infection. The earliest and latest date of onset were on 19 May 2025 and 27 October 2025, respectively. Locally acquired cases have been reported by Italy (779), Greece (96, one of which had an unknown place of infection), France (62), Serbia (62), Romania (49), Spain (36), Hungary (14), Croatia (4), Albania (3), Germany (2), North Macedonia (2), Bulgaria (1), Kosovo* (1) and Türkiye (1). In Europe, 97 deaths were reported. Case numbers reported this year were above the average for the past decade (758). However, the figures remained lower than those seen in 2018, 2022, and 2024 – years when virus circulation was particularly intense, with over 1,300 cases reported.

This year, Italy experienced a large outbreak, with 779 confirmed human cases, including 72 fatalities (case fatality rate of 9.2%, which is within the expected range). This is the highest number of human WNV cases reported by Italy in a year. Most cases (267) were reported from the Lazio region (Latina, Roma and Frosinone), followed by 133 cases reported by the Campania region (Napoli, Caserta, Salerno and Avellino). Other regions reported similar numbers to previous years. Furthermore, France reported more cases than in any previous year and 14 regions reported cases for the first time ever.

As of 3 December 2025, locally acquired human cases of WNV infection were reported in 157 regions across 14 countries. This compares with 188 regions across 18 countries in 2024. All 14 countries had previously reported human cases of WNV.

*All references to Kosovo should be understood to be in the context of the United Nations Security Council resolution 1244 (1999) and the ICJ Opinion on the Kosovo Declaration of Independence.

E.5. [Chikungunya virus disease](#) (16 December)

Since the previous update on 14 November 2025 and as of 12 December 2025 (data collection period), 26 818 Chikungunya virus disease (CHIKVD) cases have been detected, including 83 associated deaths, from 12 countries (data available until 30 November). Cases reported in November have decreased by 39.4% compared to October, when 44 295 were reported. Deaths have increased in November when compared to the previous month, when one death was reported.

As further cases are unlikely, given the current unfavourable seasonal weather conditions for vector-borne transmission, ECDC is concluding its weekly reports for the 2025 season.

E.6. [Ebola virus disease - Democratic Republic of the Congo - 2025](#) (Last update: 3 December)

On 1 December 2025, WHO published a Disease Outbreak News (DON) Item announcing the end of the Ebola virus disease outbreak in DRC. According to the DON, no new cases have been detected in the past 42 days, since the last confirmed case was discharged from treatment on 19 October 2025. The country is now beginning a 90- day period of enhanced disease surveillance.

On 19 October 2025, WHO announced that the last Ebola virus disease patient in DRC was discharged and initiated the 42-day countdown for declaring the outbreak over. A total of 19 patients recovered from the disease (29.7%) and the last case was reported on 26 September. All 1 735/1 787 (97.3%) contacts that were followed up, completed their monitoring.

E.7. [Rift Valley fever in Senegal and Mauritania – 2025](#) (Last update: 21 November)

As of 20 November, 482 human cases (including 31 deaths) of Rift Valley fever (RVF) have been reported in Senegal.

Since 27 September 2025, and as of 9 November, 52 human cases (including 14 deaths) of RVF have been reported in Mauritania.

On 5 November, media quoting health officials reported one human case of RVF in The Gambia, close to the border with Senegal.

All three countries have reported outbreaks among livestock.

To date, no human-to-human transmission of RVF has been documented.

E.8. [Influenza A\(H5N1\) – Multi-country \(World\) – Monitoring human cases](#) (Last update: 28 November)

On 25 November 2025, a fatal human case of avian influenza A(H5N1) virus infection was reported in an adult man from Chroy Changvar District in the autonomous municipality of Phnom Penh, Cambodia.

The infection was laboratory-confirmed on 24 November 2025, and the patient passed away the same day.

Since 2003, and as of 17 November 2025, a total of 993 confirmed human cases of A(H5N1) have been reported worldwide, including 476 deaths (case fatality rate (CFR): 48%). Of these, 90 cases were reported from Cambodia, including 52 deaths (CFR: 58%).

ECDC's risk assessment for A(H5N1) remains unchanged, overall, the risk related to zoonotic influenza for the general population in the EU/EEA is considered low.

E.9. [Influenza A\(H5N5\) – Multi-country \(World\) – Monitoring human cases](#) (Last update: 28 November)

The first human case of avian influenza A(H5N5) has been confirmed in Washington State, USA.

The case, an older adult with underlying conditions, was hospitalised in early November 2025 and died on 21 November 2025. The likely source of exposure is mixed backyard poultry that had contact with wild birds.

The US CDC assesses the risk of avian influenza A(H5) to the general public as low.

HPAI A(H5N5) has recently been circulating in wild birds in northern Europe, with occasional detections and outbreaks in wild mammals and domestic poultry.

The virus was identified as belonging to clade 2.3.4.4b, genotype A6/EA-2021-I, which has been detected in birds and mammals in North America. No markers associated with mammalian adaptations of significance were observed.

E.10. [Marburg virus disease \(MVD\) - Ethiopia - 2025](#) (16 December)

Since 12 December 2025, there has been one additional confirmed case and one additional death of Marburg Virus Disease (MVD) reported in Ethiopia. Since the outbreak was confirmed on 14 November 2025 and as of 18 December 2025, 17 cases (14 laboratory confirmed and three probable) of Marburg Virus Disease (MVD) have been reported in Ethiopia, according to the Ministry of Health. A total of 12 deaths have been reported, nine of which were in laboratory-confirmed cases and three in probable cases (case fatality rate (CFR) among confirmed cases: 64.3%).

According to media quoting health officials, the deaths include two healthcare workers. As of 17 December, two areas have been affected across two regions; Jinka town, South Ethiopia Regional State and Hawassa City, Sidama Region. According to media quoting the Ethiopian Ministry of Health on 27 November, one of the cases was confirmed in Hawassa

City, Sidama Region, after returning from Jinka town. Jinka town is considered to be the epicentre of the outbreak, according to Africa CDC.

Cases have presented with symptoms including sudden fever, muscle pain, severe fatigue, headache, diarrhoea, vomiting and, in later stages, unexplained bleeding. As of 18 December, a total of five cases have recovered and none are currently in treatment, according to the Ministry of Health. Cases have presented with symptoms including sudden fever, muscle pain, severe fatigue, headache, diarrhoea, vomiting and, in later stages, unexplained bleeding. As of 4 December, a total of four cases have recovered and one is being treated, according to the Ministry of Health.

Cases have been reported in two regions; Jinka city, Omo Zone, South Ethiopia Regional State and Hawassa City, Sidama Region. Jinka city, is considered the epicentre of the outbreak, according to Africa CDC. According to media quoting the Ethiopian Ministry of Health on 27 November, one of the cases was confirmed in Hawassa City, Sidama Region, after returning from Jinka City.

On 14 November 2025, the Ministry of Health of Ethiopia confirmed an MVD outbreak in Jinka city, southern Ethiopia and reported that there were 17 suspected cases. Jinka is in south-west Ethiopia, which is close to the border with South Sudan and Kenya. Jinka is a small market town with about 30 000 inhabitants. It is also the capital of South Omo region and a tourist hub for the area. It is two days away from Addis Ababa. A small airport has recently been inaugurated there.

According to WHO, the virus strain shows similarities to those previously identified in East Africa.

The likelihood of exposure to MVD for EU/EEA citizens visiting or living in Ethiopia is assessed as low, with uncertainties connected to the limited epidemiological information available. The impact, assessed at population level, is low since the number of MVD cases in EU/EEA citizens in Ethiopia is expected to be very small. Therefore, the overall risk for EU/EEA citizens visiting or living in Ethiopia is low.

In the event of MVD cases being imported into the EU/EEA, we consider the likelihood of further transmission to be very low, and the associated impact low. Therefore, the overall risk for the EU/EEA is assessed as low.

E.11. [Mers-CoV – France ex. Arabian Peninsula - 2025](#) (10 December)

Since the previous update on 3 November 2025, and as of 10 December 2025, two new imported MERS cases have been reported in France. The patients were part of the same travel group who visited the Arabian Peninsula. No secondary cases have been detected so far. The previous MERS cases in the EU were reported in 2014.

Summary: Since the beginning of 2025, and as of 10 December 2025, 14 MERS cases (including three fatalities) have been reported with date of onset in 2025. Among these, 12

cases (including three fatalities) have been reported in Saudi Arabia, and two imported cases have been reported in France.

Since April 2012, and as of 10 December 2025, a total of 2 642 cases of MERS, including 958 deaths, have been reported by health authorities worldwide