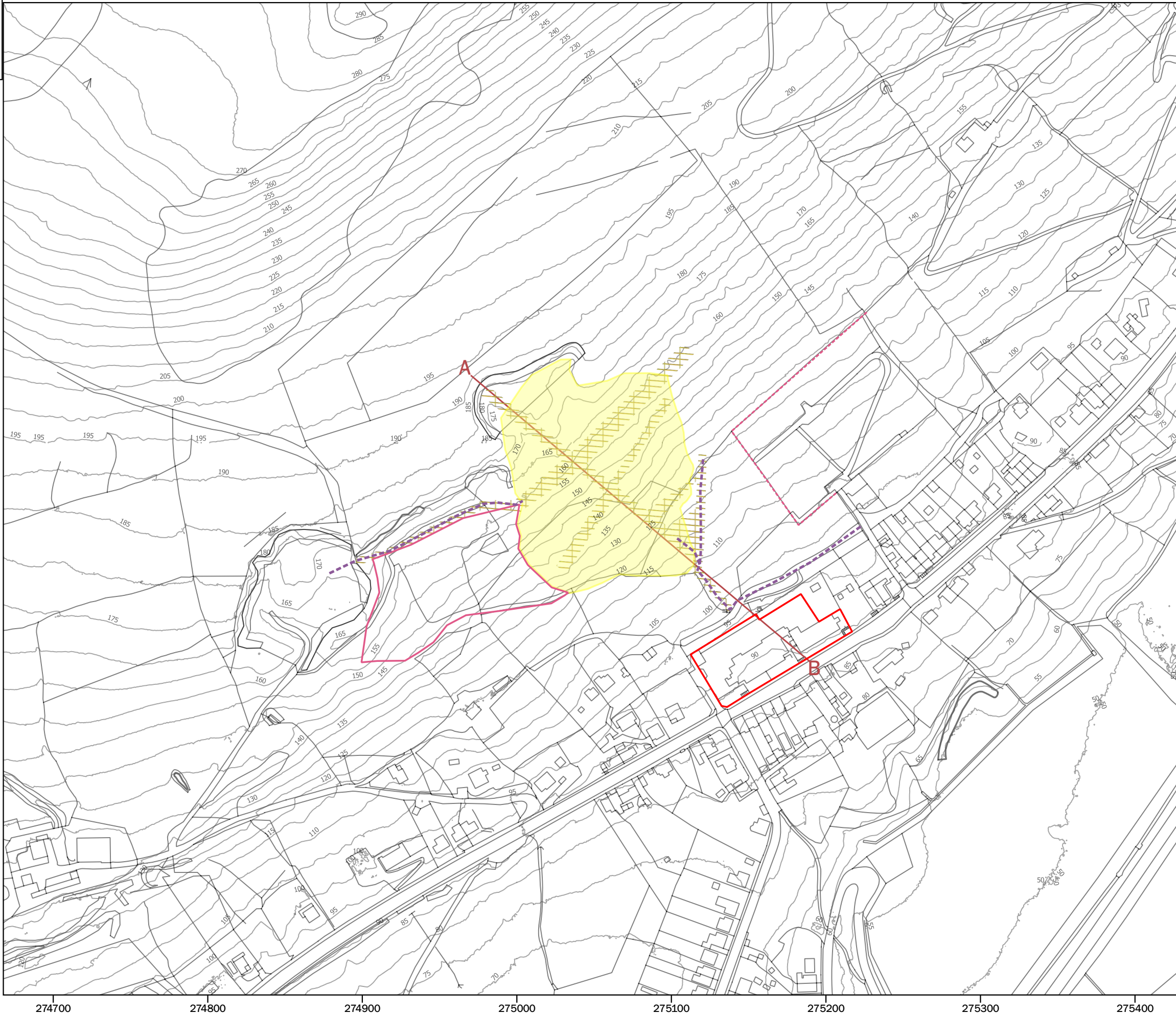
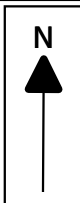

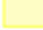







FIGURES



Key

-  GrG Primary School Boundary
-  ESP Spoil Tip Extent
-  Extended Tipping Area
-  Vegetation Clearance Area
-  Access Tracks
-  Cemetery Wall
-  Line of Section A - B

Notes:
Contains OS data © Crown copyright and database right (2019). Data may be re-used under the terms of the Open Government Licence (OGL)

SCALE: 1:2,500 (approx. @ A3)

PROJECT:
Godre'r Graig Primary School

FIGURE 1:
Site Features Plan

EARTH SCIENCE PARTNERSHIP
33 Cardiff Road, Taffs Well,
Cardiff CF15 7RB Tel: 029 2081 3385
enquiries@earthsciencepartnership.com

Key

- GrG Primary School Boundary
- Vegetation Clearance Area
- Access Tracks
- Cemetery Wall
- Line of Section A - B
- Photograph Locations - Plates

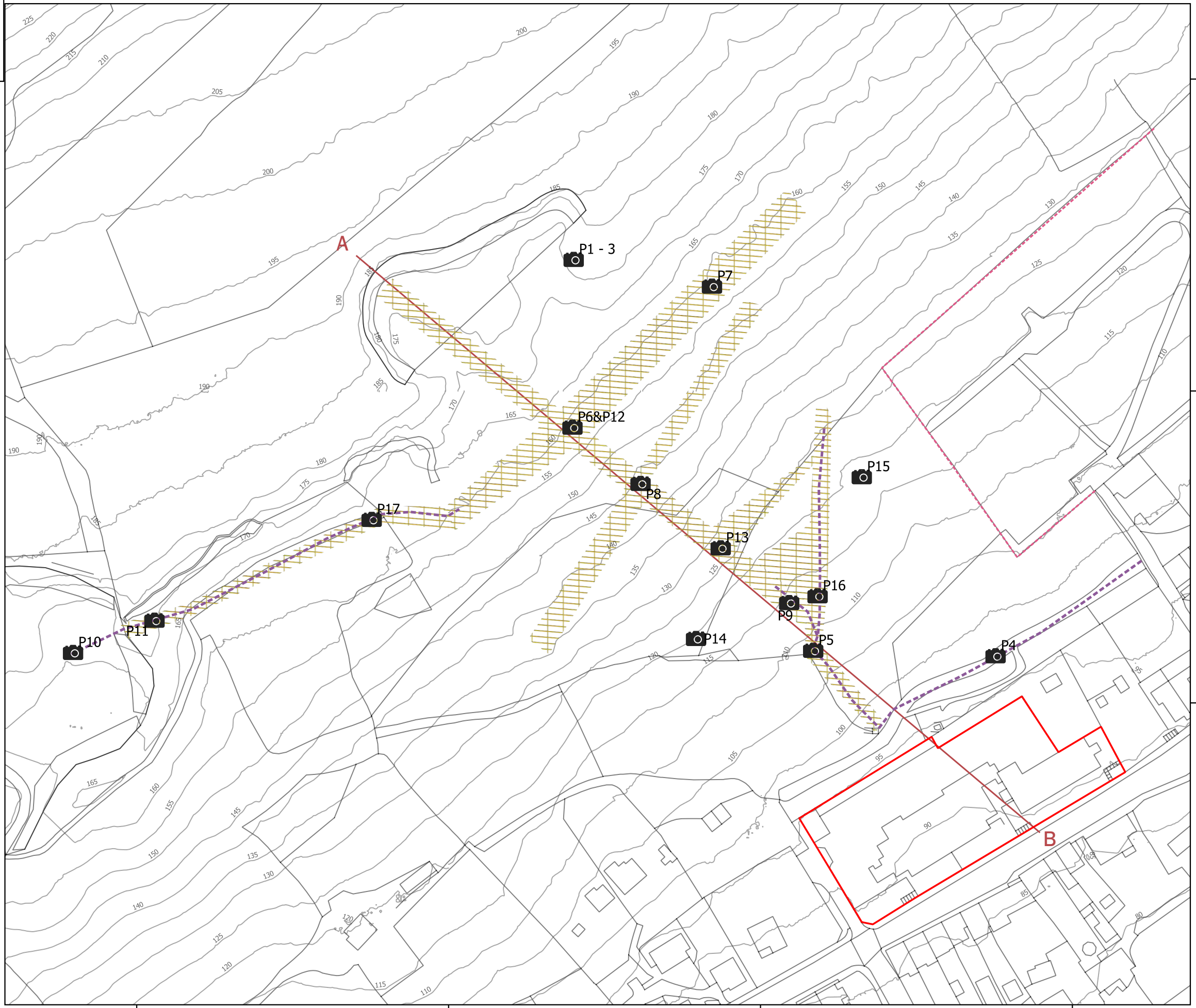
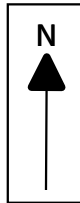
Notes:
Contains OS data © Crown copyright and database right (2019). Data may be re-used under the terms of the Open Government Licence (OGL)

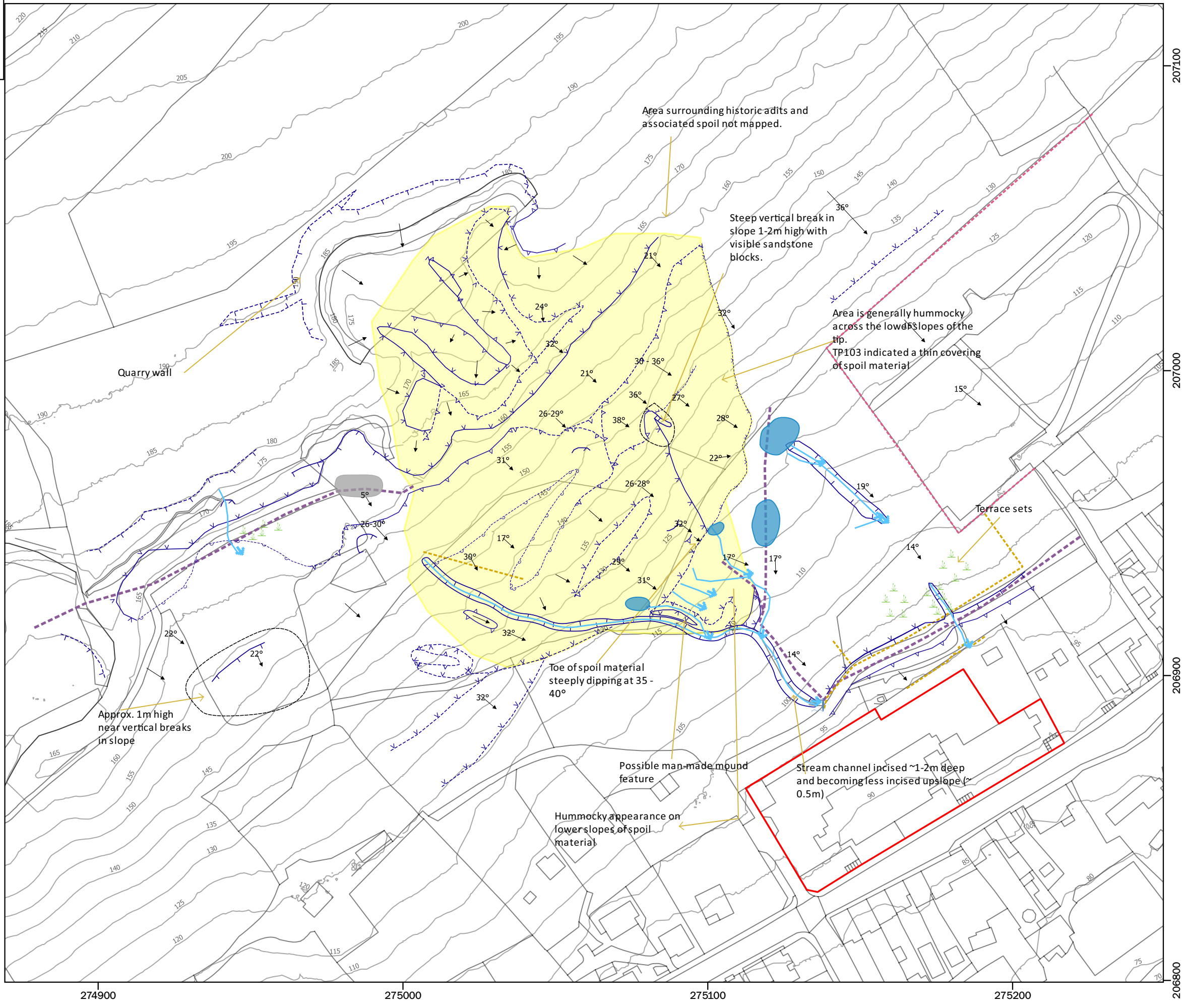
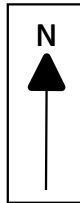
SCALE: 1:1,250 (approx. @ A3)

PROJECT:
Godre'r Graig Primary School

FIGURE 1a:
Site Plan - Plates Locations

EARTH SCIENCE PARTNERSHIP
33 Cardiff Road, Taffs Well,
Cardiff CF15 7RB Tel: 029 2081 3385
enquiries@earthsciencepartnership.com





Key

- Ponding Water
- Coal present at surface
- Reeds - Saturated ground
- Culvert
- Vertical
- Sharp Convex
- Sharp Concave
- Sharp Concave Approx
- Sharp Convex Approx
- Gradual Concave Approx
- Gradual Convex Approx
- Vertical Approx
- Stream
- Dip
- Topo Fence Lines
- Cemetery Wall
- Access Tracks
- ESP Spoil Tip Extent
- GrG Primary School Boundary

Notes:
Contains OS data © Crown copyright and database right (2019). Data may be re-used under the terms of the Open Government Licence (OGL).

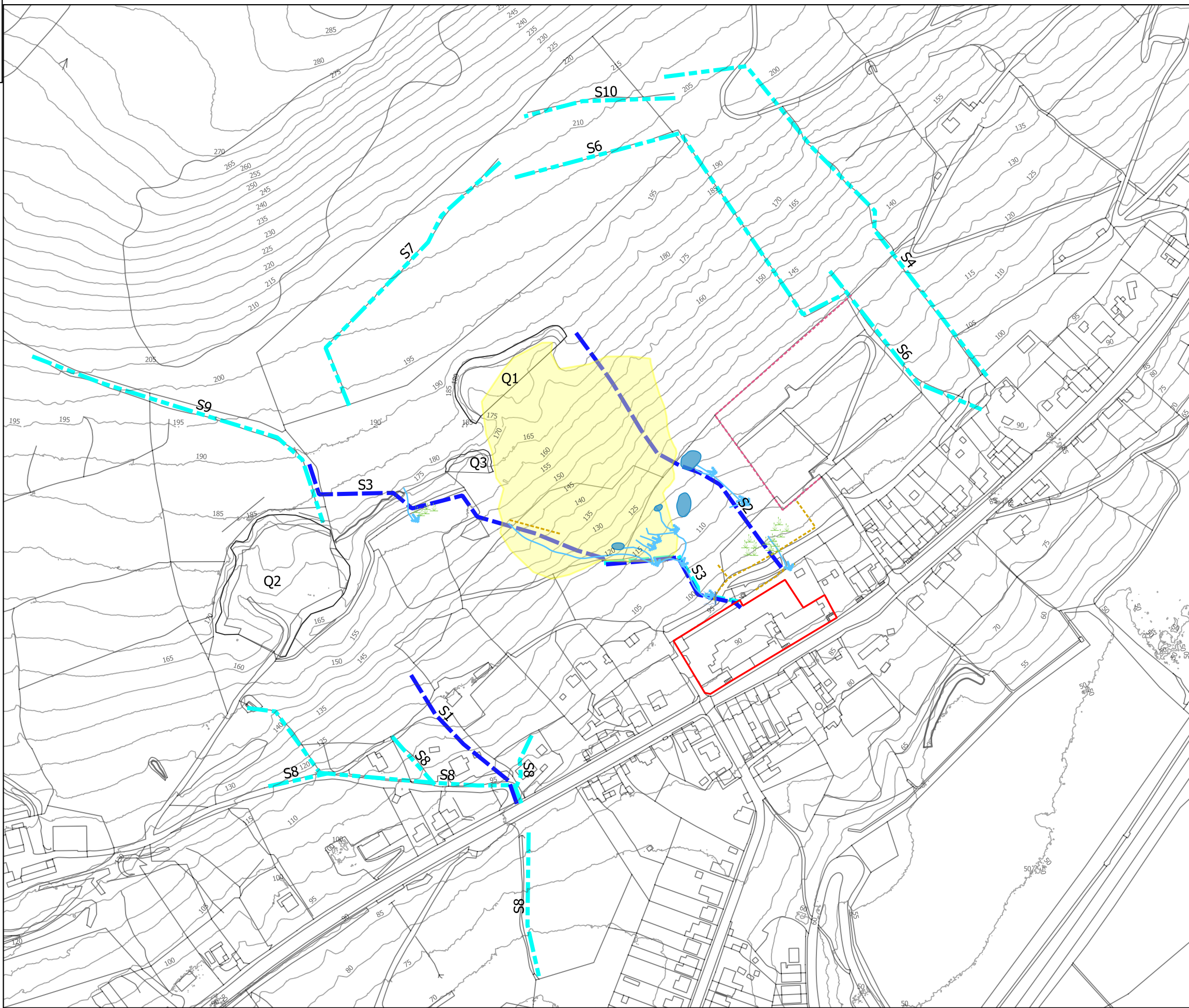
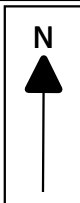
Contains National Resource Wales information © Natural Resources Wales and Database Right (2019). Data may be re-used under the terms of the Open Government Licence (OGL).

SCALE: 1:1,250 (approx. @ A3)

PROJECT:
Godre'r Graig Primary School

FIGURE 2:
Geomorphological Mapping

EARTH SCIENCE PARTNERSHIP
33 Cardiff Road, Taffs Well,
Cardiff CF15 7RB Tel: 029 2081 3385
enquiries@earthsciencepartnership.com



Key

- GrG Primary School Boundary
- ESP Spoil Tip Extent
- Surface Water Features Historic (1877)
- Surface Water Features Recent Mapping
- Quarries (Q1 Q3)
- ESP Observed Surface Water Features**
- Stream
- Ponding Water

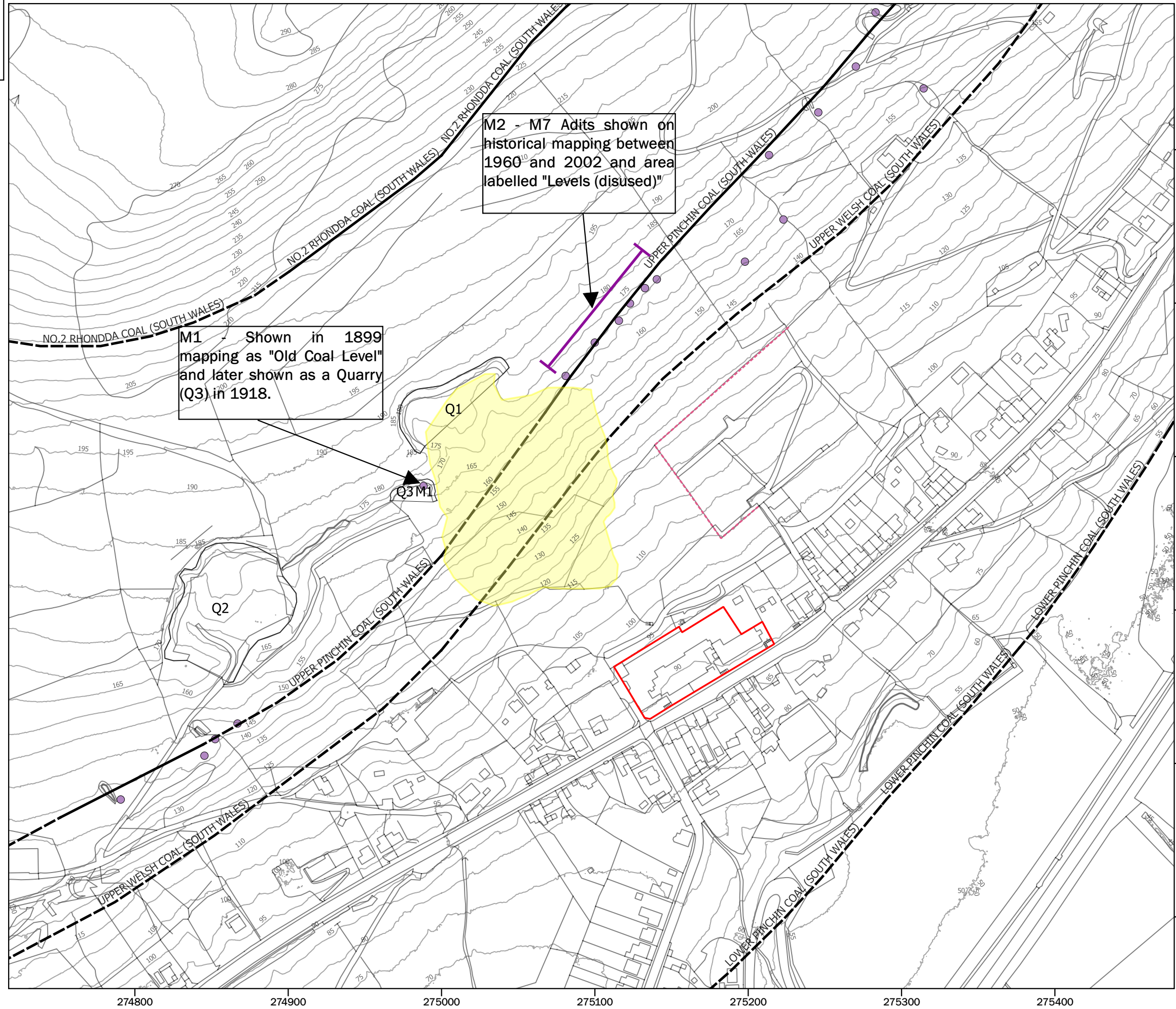
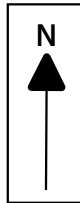
Notes:
Contains OS data © Crown copyright and database right (2019). Data may be re-used under the terms of the Open Government Licence (OGL)

SCALE: 1:2,500 (approx. @ A3)

PROJECT:
Godre'r Graig Primary School

FIGURE 3:
Hydrological Setting

EARTH SCIENCE PARTNERSHIP
33 Cardiff Road, Taffs Well,
Cardiff CF15 7RB Tel: 029 2081 3385
enquiries@earthsciencepartnership.com



Key

- GrG Primary School Boundary
- Mine Entry (M)
- ESP Spoil Tip Extent
- BGS Coal Seam Inferred
- BGS Coal Seam Observed

Notes:
© Natural Resources Wales and Database Right. All rights Reserved. Contains OS data © Crown copyright and database right (2019). Data may be re-used under the terms of the Open Government Licence (OGL). Contains British Geological Survey materials © UKRI [2019].

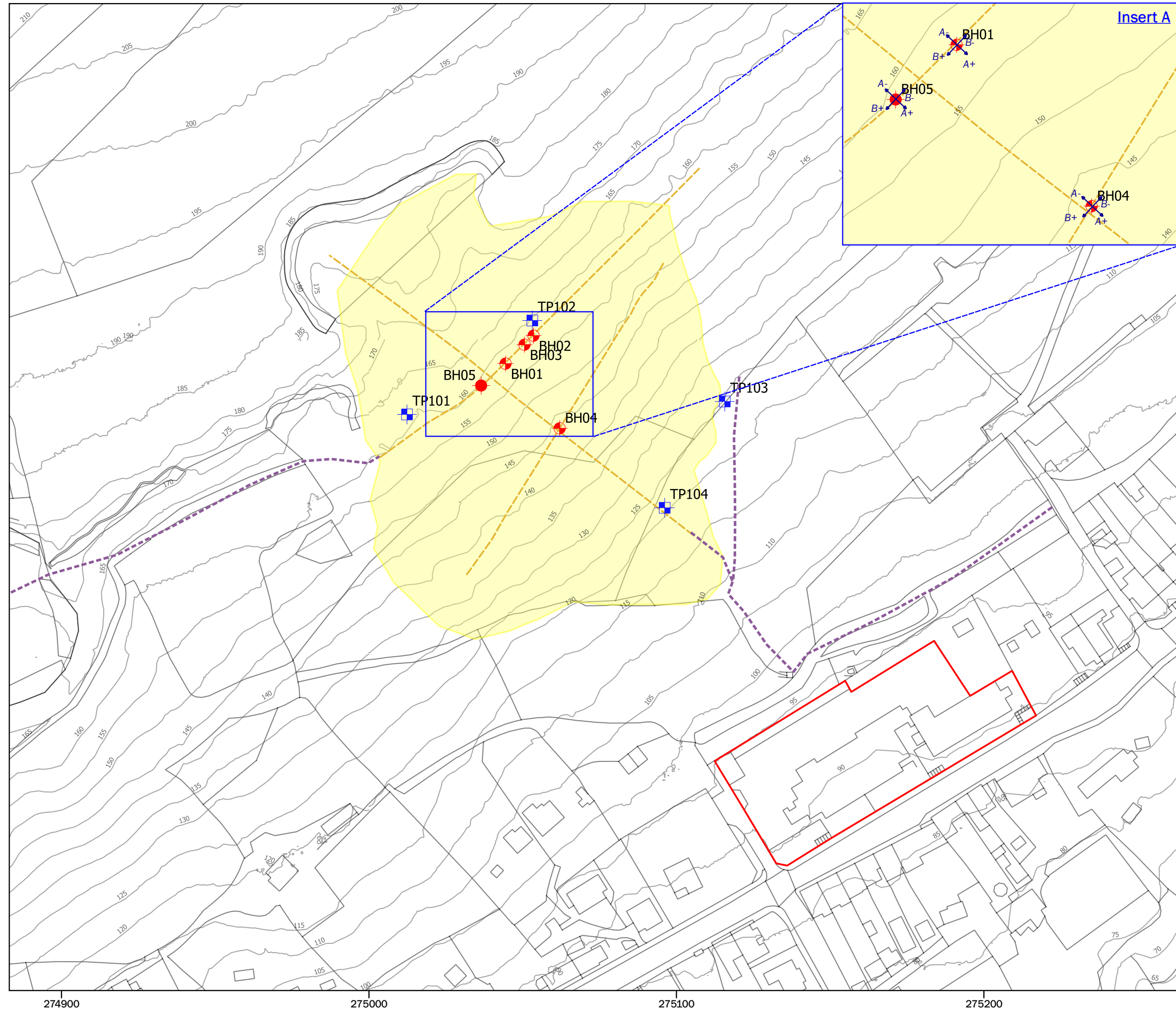
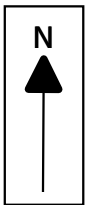
Mine entry locations interpolated from historic mapping and Coal Authority (CA, 2019).
Coal seams interpolated from 1:10,000 geological mapping SN70NE (BGS licence number: C15/05 CSL)

SCALE: 1:2,500 (approx. @ A3)

PROJECT:
Godre'r Graig Primary School

FIGURE 4:
Mining Setting

EARTH SCIENCE PARTNERSHIP
33 Cardiff Road, Taffs Well,
Cardiff CF15 7RB Tel: 029 2081 3385
enquiries@earthsciencepartnership.com



- Key**
- GrG Primary School Boundary
 - CP Borehole Locations
 - RC Boreholes
 - Trial Pit Locations
 - Geophysics Profiles
 - Access Tracks
- Details of inclinometer installations are shown on Insert A

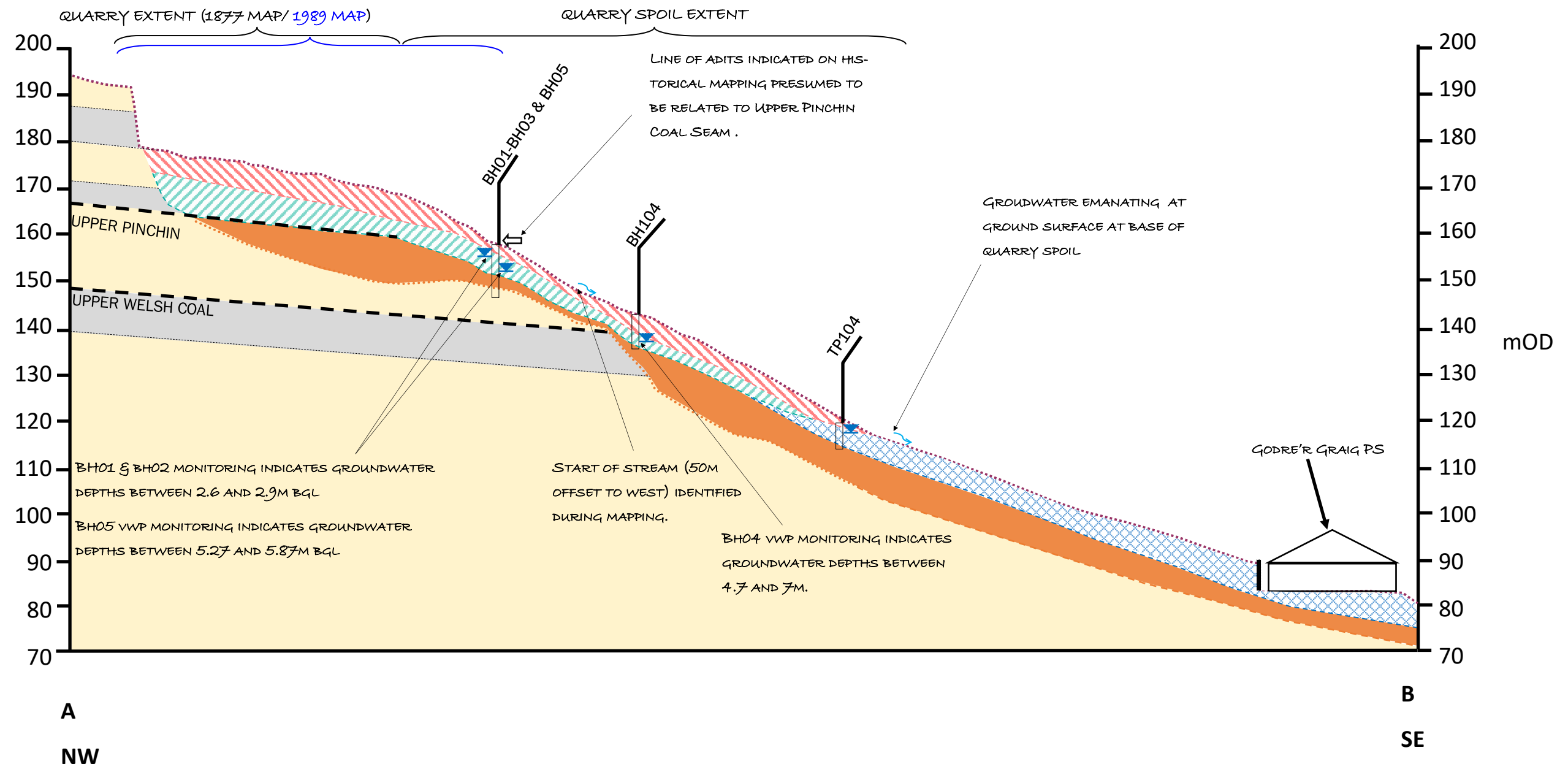
Notes:
© Natural Resources Wales and Database Right. All rights Reserved. Contains OS data © Crown copyright and database right (2019). Data may be re-used under the terms of the Open Government Licence (OGL).

SCALE: 1:1,250 (approx. @ A3)












PROJECT:
Godre'r Graig Primary School

FIGURE 5:
Investigation Point Plan

EARTH SCIENCE PARTNERSHIP
33 Cardiff Road, Taffs Well,
Cardiff CF15 7RB Tel: 029 2081 3385
enquiries@earthsciencepartnership.com



Key

- | | | | |
|--|---|--|---|
|  Llynfi Member— Sandstone |  Made Ground - Coarse Discard (Coarse) |  Ground Surface |  Spring |
|  Llynfi Member—Mudstone |  Made Ground - Coarse Discard (Fine) |  Coal Seam (Inferred) |  Groundwater Level |
|  Weathered Bedrock |  Probable Glacial Diamicton |  Boundary (Inferred) | |

PROJECT: Godre'r Graig Primary School

SCALE: 1:1000 (approx. at A3)

FIGURE 6: Conceptual Ground Model



EARTH SCIENCE PARTNERSHIP
 33 Cardiff Road, Taffs Well, Cardiff CF15 7RB
 Tel: 029 2081 3385 enquiries@earthsciencepartnership.com

PLATES



Plate 1: General overview of Quarry Spoil Tip looking towards the south.



Plate 2: General overview of quarry (Q1) towards the western flank with quarry spoil mound in the foreground.

PROJECT: GODRE'R GRAIG PRIMARY SCHOOL

PLATES



EARTH SCIENCE PARTNERSHIP

33 Cardiff Road, Taffs Well, Cardiff CF15 7RB

Tel: 029 2081 3385 enquiries@earthsciencepartnership.com



Plate 3: Eastern flank of the quarry (Q1) looking towards the northeast.



Plate 4: Existing access track to the rear of Godre'r Graig Primary School

PROJECT: GODRE'R GRAIG PRIMARY SCHOOL

PLATES



EARTH SCIENCE PARTNERSHIP

33 Cardiff Road, Taffs Well, Cardiff CF15 7RB

Tel: 029 2081 3385 enquiries@earthsciencepartnership.com



Plate 5: Looking towards the south along access to lower slopes.



Plate 6: Looking downslope towards the south, vegetation clearance of survey line.


PROJECT: GODRE'R GRAIG PRIMARY SCHOOL	
PLATES	
	EARTH SCIENCE PARTNERSHIP 33 Cardiff Road, Taff's Well, Cardiff CF15 7RB Tel: 029 2081 3385 enquiries@earthsciencepartnership.com



Plate 7: Looking towards the west across area of vegetation clearance on the upper survey line (perpendicular to slope).



Plate 8: Looking towards the west across area of vegetation clearance on mid-slope survey line (perpendicular to slope). Cobbles and boulders visible on site surface in foreground. Location of BH04.

PROJECT: GODRE'R GRAIG PRIMARY SCHOOL

PLATES



EARTH SCIENCE PARTNERSHIP

33 Cardiff Road, Taffs Well, Cardiff CF15 7RB

Tel: 029 2081 3385 enquiries@earthsciencepartnership.com



Plate 9: Looking upslope towards the north across area of vegetation clearance at base of slope.



Plate 10: Overview of access track through former Cwar Pen-twyn Quarry (Q2), looking towards the west.

PROJECT: GODRE'R GRAIG PRIMARY SCHOOL

PLATES

esp

EARTH SCIENCE PARTNERSHIP

33 Cardiff Road, Taffs Well, Cardiff CF15 7RB

Tel: 029 2081 3385 enquiries@earthsciencepartnership.com



Plate 11: Overview of access track beyond former Cwar Pen-twyn Quarry, looking towards the west.



Plate 12: Overview of access track to area of site investigation and upper survey line (perpendicular to slope), looking towards the west.

PROJECT: GODRE'R GRAIG PRIMARY SCHOOL

PLATES



EARTH SCIENCE PARTNERSHIP

33 Cardiff Road, Taffs Well, Cardiff CF15 7RB

Tel: 029 2081 3385 enquiries@earthsciencepartnership.com



Plate 13: Quarry spoil cobbles and boulders visible on ground surface.



Plate 14: Looking downslope towards the south, potentially anthropogenically modified mound, approximate edges indicated by red dashed line.

PROJECT: GODRE'R GRAIG PRIMARY SCHOOL

PLATES



EARTH SCIENCE PARTNERSHIP
33 Cardiff Road, Taff's Well, Cardiff CF15 7RB
Tel: 029 2081 3385
enquiries@earthsciencepartnership.com



Plate 15: Stream 2 identified on site, no further evidence of stream up slope. Looking towards the northwest.



Plate 16: Looking downslope to the west, saturated ground with streams flowing from base of spoil tip.

PROJECT: GODRE'R GRAIG PRIMARY SCHOOL

PLATES

EARTH SCIENCE PARTNERSHIP


33 Cardiff Road, Taff's Well, Cardiff CF15 7RB

Tel: 029 2081 3385

enquiries@earthsciencepartnership.com



Plate 17: Coal visible on ground surface along access track, looking towards the northeast. Coal located nearby historic mine entry (M1) and quarry (Q3)

PROJECT: GODRE'R GRAIG PRIMARY SCHOOL	
PLATES	
	EARTH SCIENCE PARTNERSHIP 33 Cardiff Road, Taff's Well, Cardiff CF15 7RB Tel: 029 2081 3385 enquiries@earthsciencepartnership.com