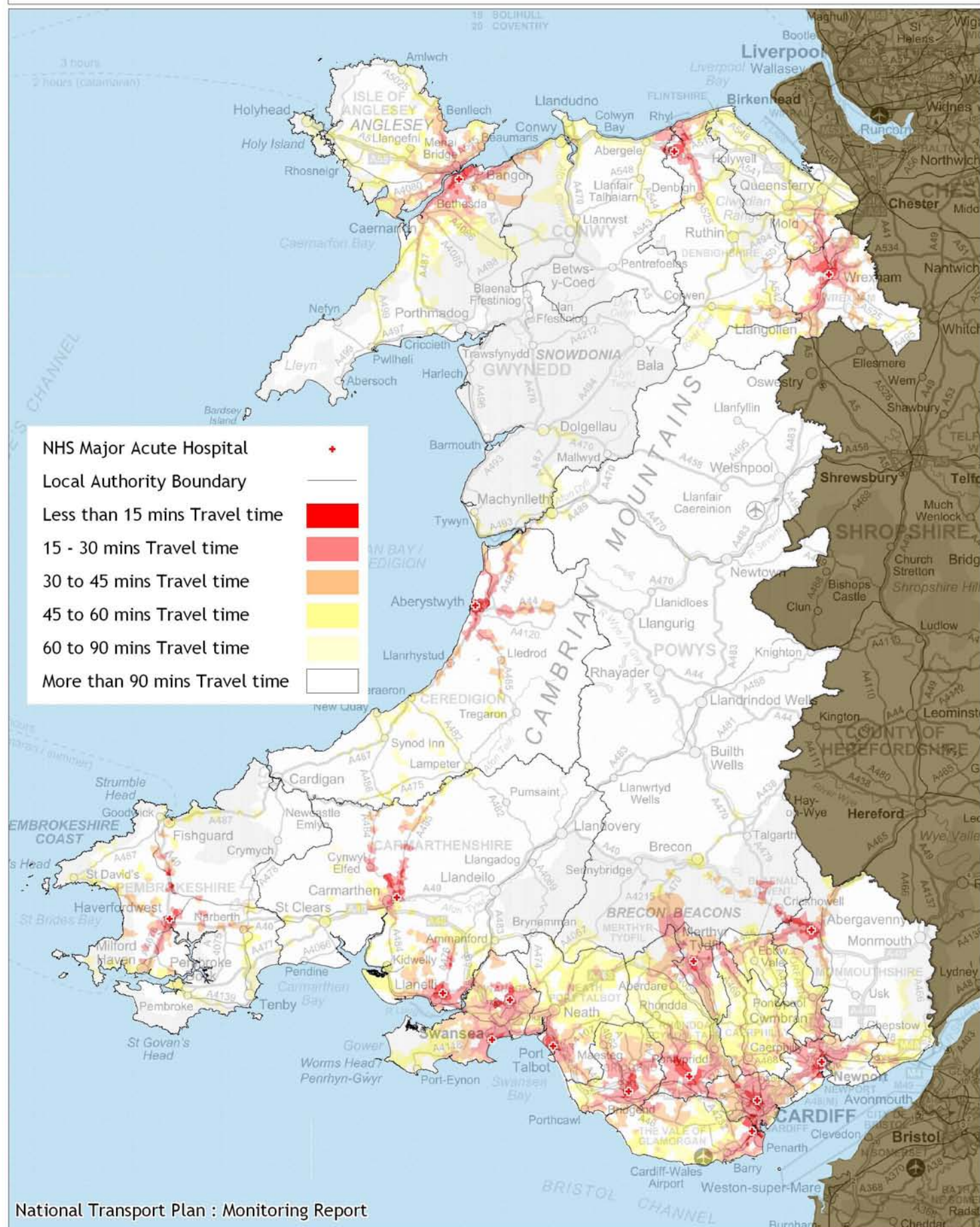
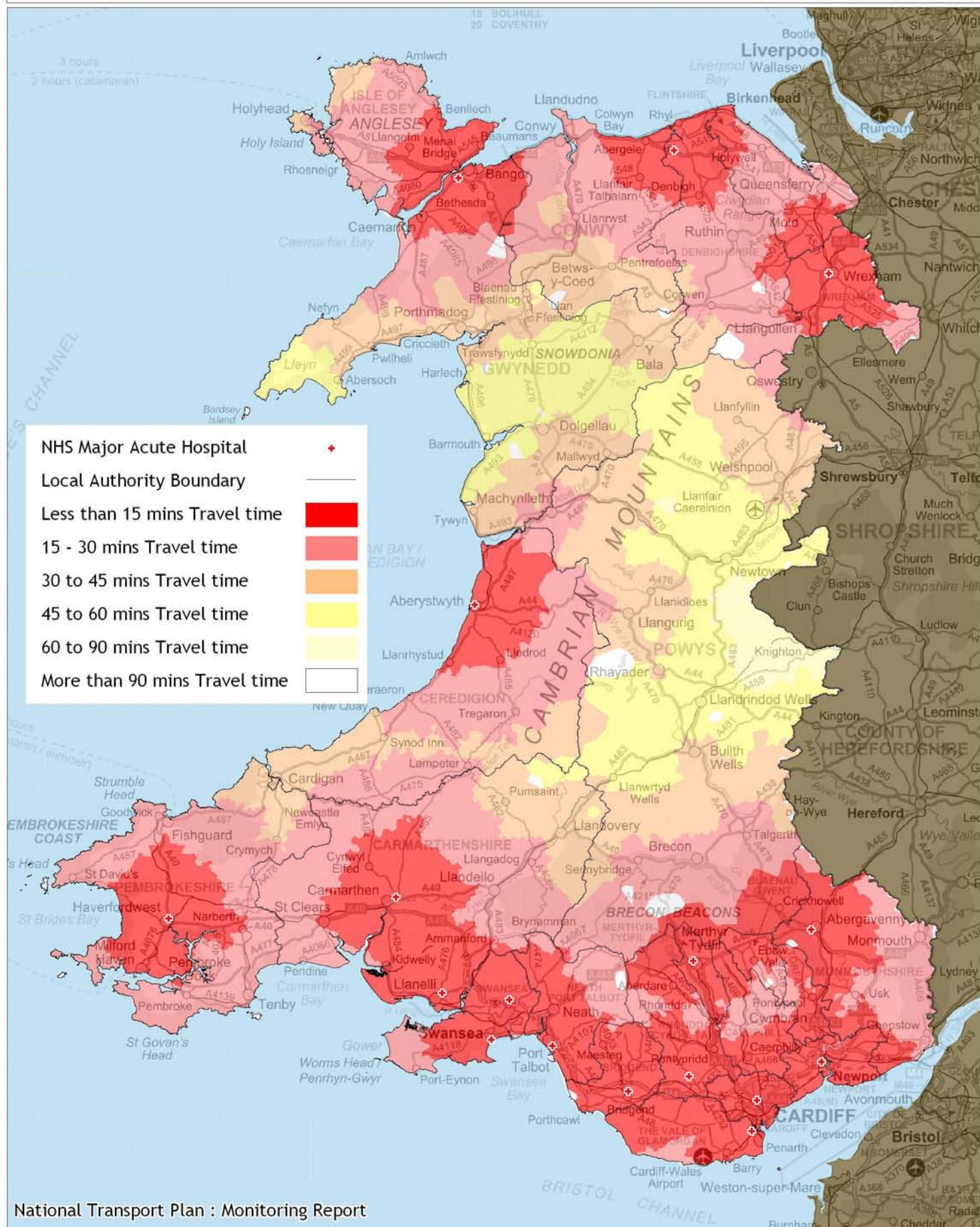


1.1 The proportion of households within 15, 30, 45, 60, and 90 minutes travel time threshold(s) of NHS Major Acute Hospitals between 10 a.m. and 12 p.m. on a Tuesday (i. by public transport)



This map is based upon the Ordnance Survey material with the permission of Ordnance Survey on behalf of The Controller of Her Majesty's Stationery Office, © Crown copyright 2010. Unauthorised reproduction infringes Crown copyright and may lead to prosecution or civil proceedings. Welsh Assembly Government. Licence Number: 100017916
 Mae'r map hwn yn seiliedig ar ddeunydd yr Arolwg Ordnans gyda chaniatâd Arolwg Ordnans ar ran Rheolwr Llyfrfa Ei Mawrhydi, © Hawffraint y Goron 2010.
 Mae atgynhyrchu heb ganiatâd yn torri hawffraint y Goron a gall hyn arwain at erlyniad neu achos sifil. Llywodraeth Cynulliad Cymru. Rhif trwydded 100017916.

1.1 The proportion of households within 15, 30, 45, 60, and 90 minutes travel time threshold(s) of NHS Major Acute Hospitals between 10 a.m. and 12 p.m. on a Tuesday (ii. by car)



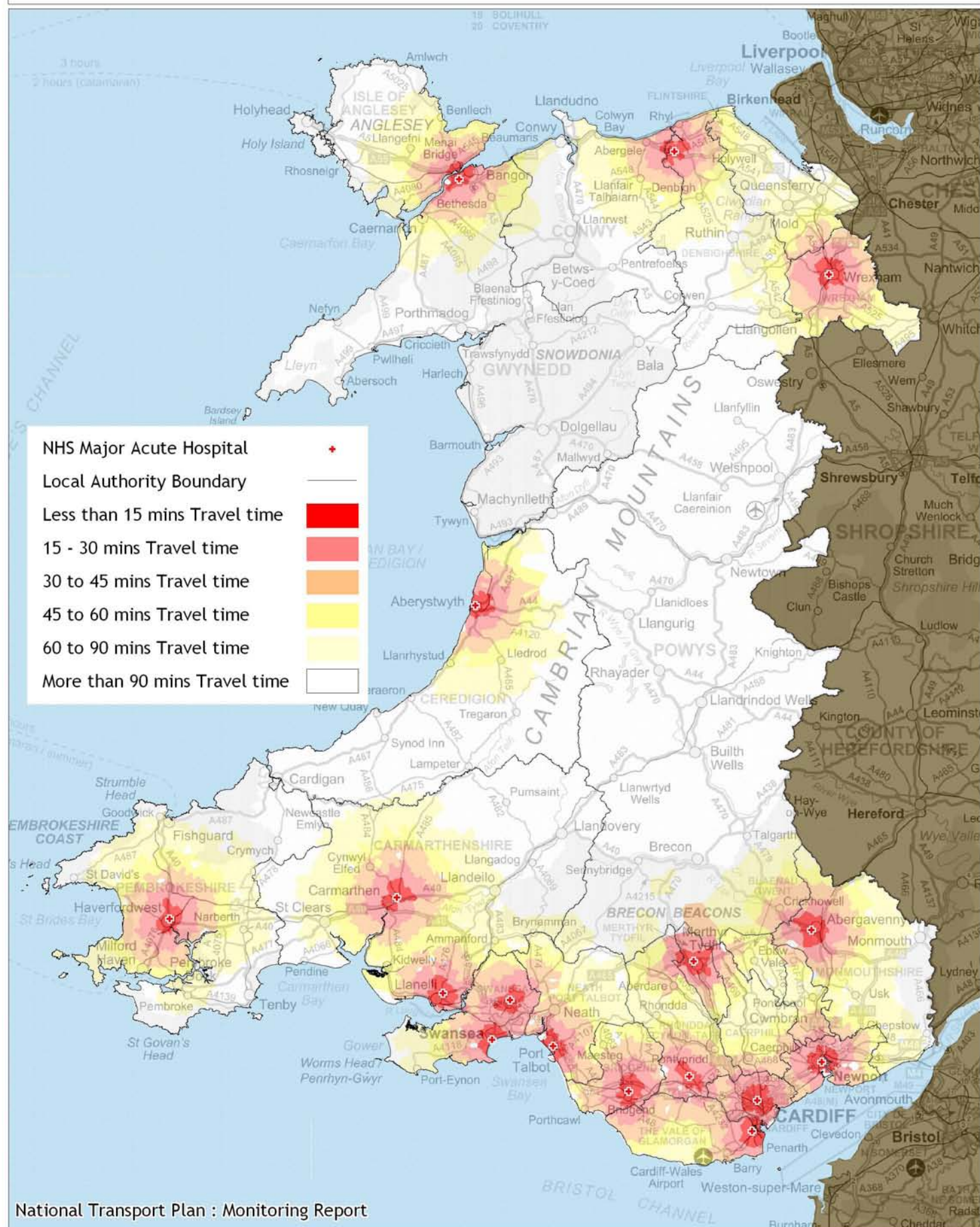
This map is based upon the Ordnance Survey material with the permission of Ordnance Survey on behalf of The Controller of Her Majesty's Stationery Office, © Crown copyright 2010.

Unauthorised reproduction infringes Crown copyright and may lead to prosecution or civil proceedings. Welsh Assembly Government. Licence Number: 100017916

Mae'r map hwn yn seiliedig ar ddeunydd yr Arolwg Ordnans gyda chaniatâd Arolwg Ordnans ar ran Rheolwr Llyfrfa Ei Mawrhydi, © Hawffraint y Goron 2010.

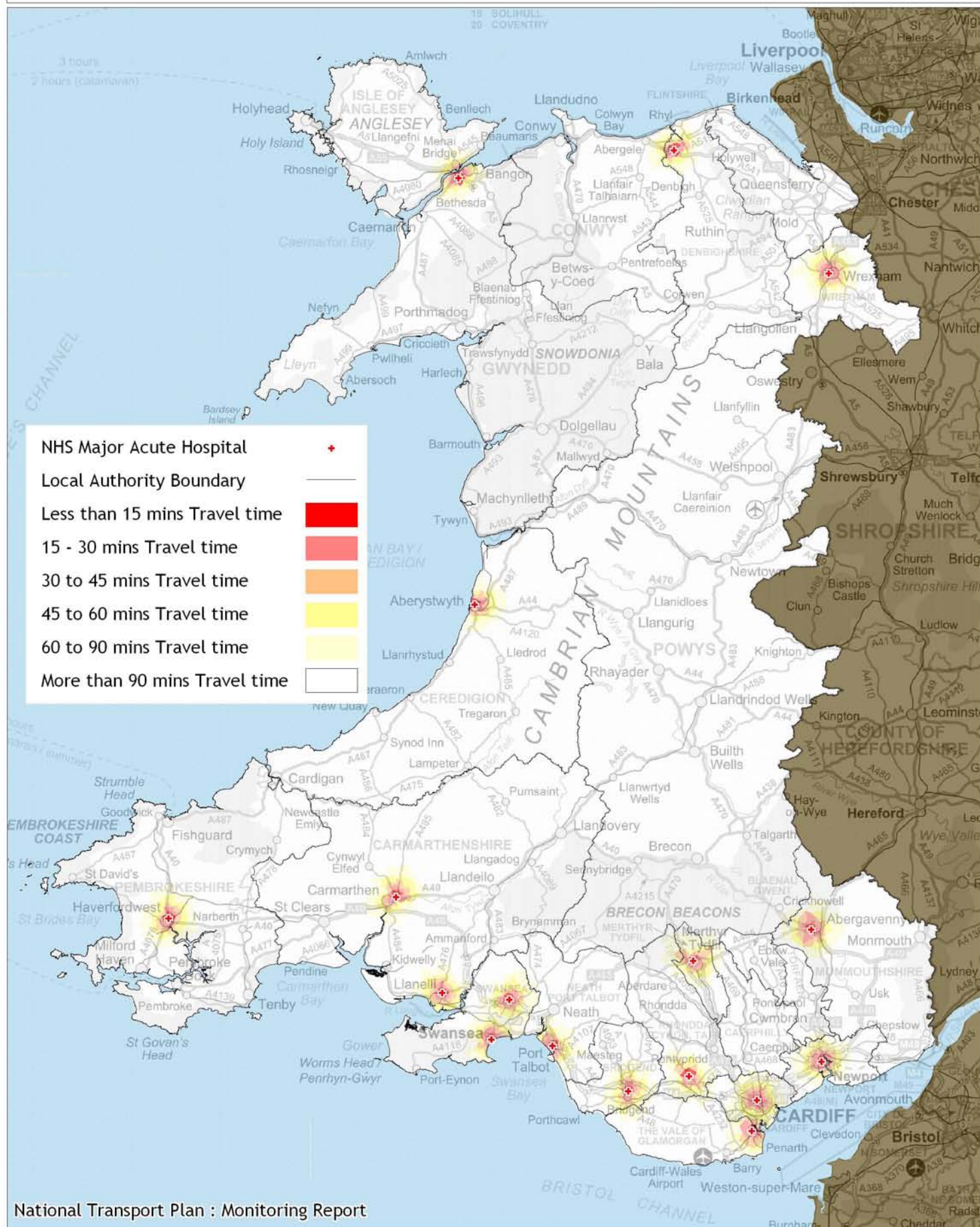
Mae atgynhyrchu heb ganiatâd yn torri hawffraint y Goron a gall hyn arwain at erlyniad neu achos sifil. Llywodraeth Cynulliad Cymru. Rhif trwydded 100017916.

1.1 The proportion of households within 15, 30, 45, 60, and 90 minutes travel time threshold(s) of NHS Major Acute Hospitals between 10 a.m. and 12 p.m. on a Tuesday (iii. by cycling)



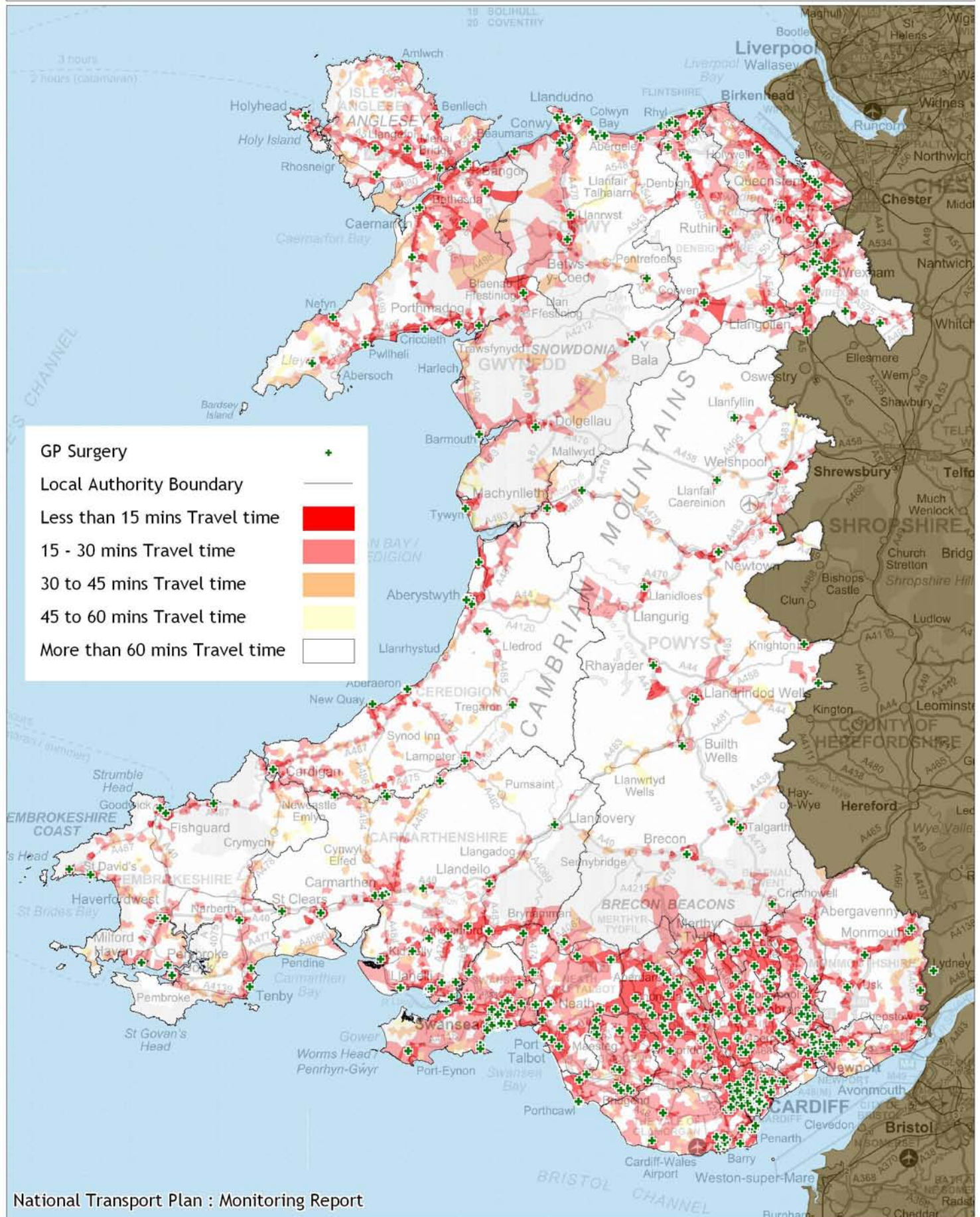
This map is based upon the Ordnance Survey material with the permission of Ordnance Survey on behalf of The Controller of Her Majesty's Stationery Office, © Crown copyright 2010. Unauthorised reproduction infringes Crown copyright and may lead to prosecution or civil proceedings. Welsh Assembly Government. Licence Number: 100017916
 Mae'r map hwn yn seiliedig ar ddeunydd yr Arolwg Ordnans gyda chaniatâd Arolwg Ordnans ar ran Rheolwr Llyfrfa Ei Mawrhydi, © Hawffraint y Goron 2010.
 Mae atgynhyrchu heb ganiatâd yn torri hawffraint y Goron a gall hyn arwain at erlyniad neu achos sifil. Llywodraeth Cynulliad Cymru. Rhif trwydded 100017916.

1.1 The proportion of households within 15, 30, 45, 60, and 90 minutes travel time threshold(s) of NHS Major Acute Hospitals between 10 a.m. and 12 p.m. on a Tuesday (iv. by walking)



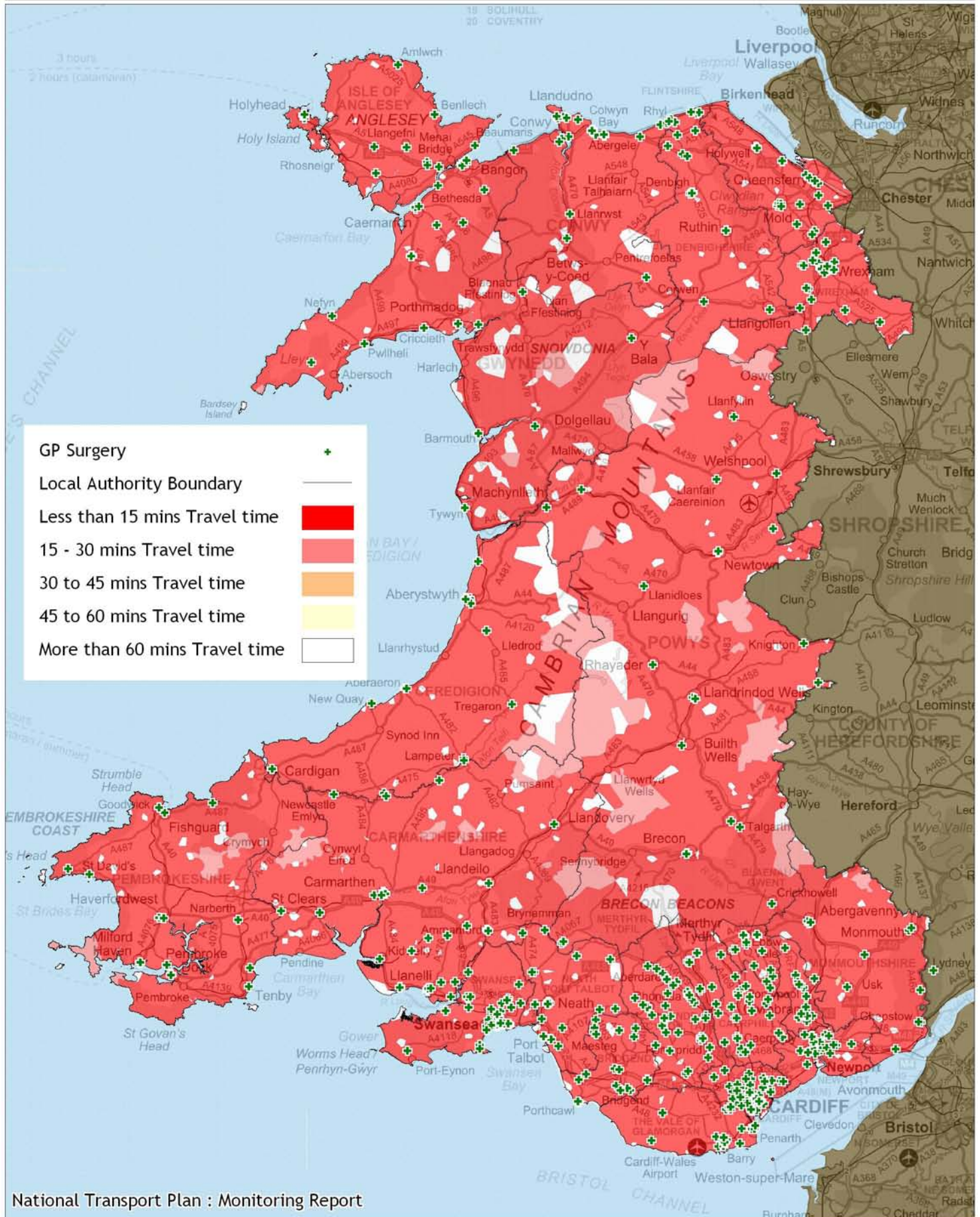
This map is based upon the Ordnance Survey material with the permission of Ordnance Survey on behalf of The Controller of Her Majesty's Stationery Office, © Crown copyright 2010. Unauthorised reproduction infringes Crown copyright and may lead to prosecution or civil proceedings. Welsh Assembly Government. Licence Number: 100017916
 Mae'r map hwn yn seiliedig ar ddeunydd yr Arolwg Ordnans gyda chaniatâd Arolwg Ordnans ar ran Rheolwr Llyfrfa Ei Mawrhydi, © Hawffraint y Goron 2010.
 Mae atgynhyrchu heb ganiatâd yn torri hawffraint y Goron a gall hyn arwain at erlyniad neu achos sifil. Llywodraeth Cynulliad Cymru. Rhif trwydded 100017916.

1.2 The proportion of households within 15, 30, 45, and 60 minutes travel time threshold(s) of GP Surgeries between 10 a.m. and 12 p.m. on a Tuesday (i. by public transport)



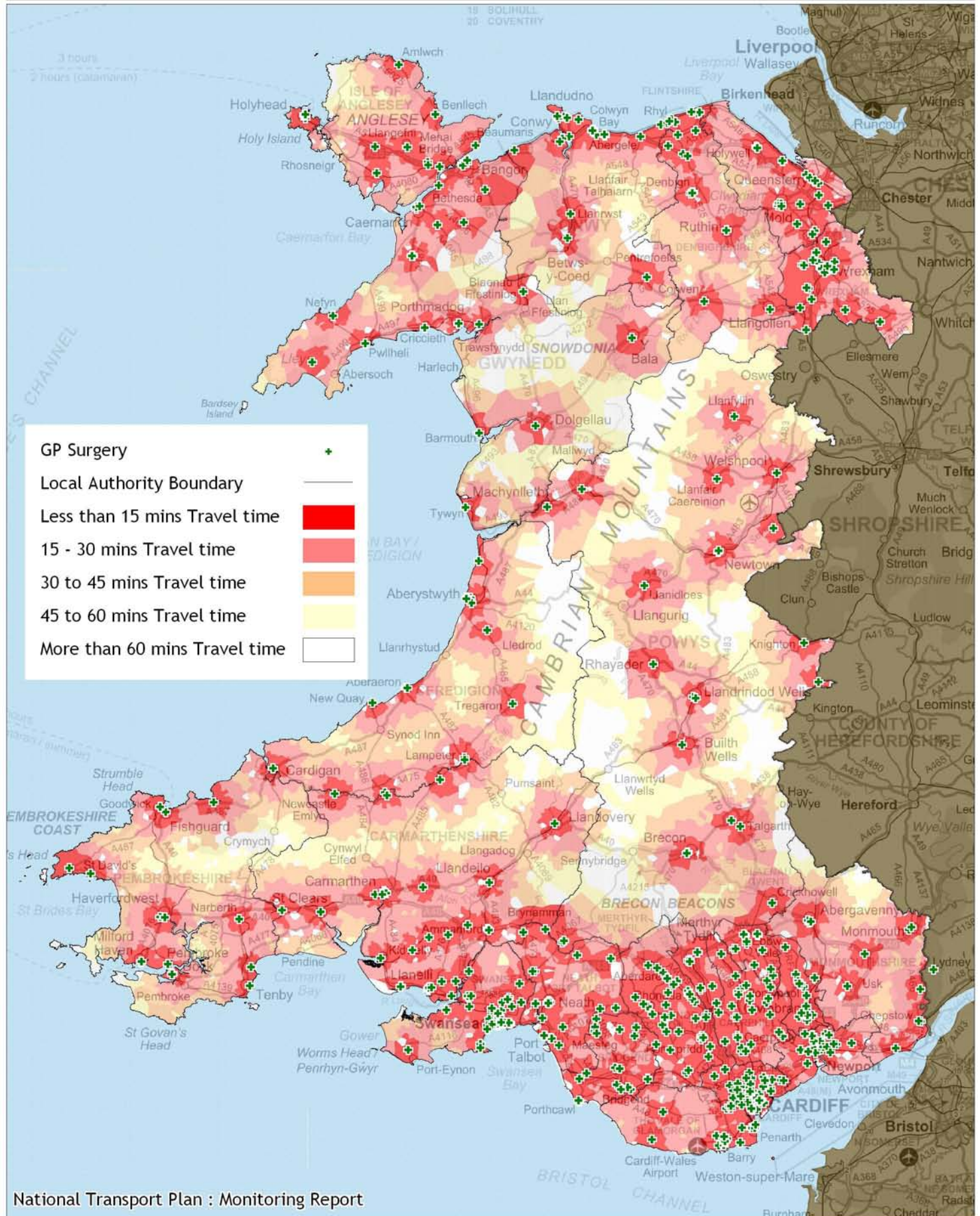
This map is based upon the Ordnance Survey material with the permission of Ordnance Survey on behalf of The Controller of Her Majesty's Stationery Office, © Crown copyright 2010. Unauthorised reproduction infringes Crown copyright and may lead to prosecution or civil proceedings. Welsh Assembly Government. Licence Number: 100017916
 Mae'r map hwn yn seiliedig ar ddeunydd yr Arolwg Ordnans gyda chaniatâd Arolwg Ordnans ar ran Rheolwyr Llyfrfa Ei Mawrhydi, © Hawffrwynt y Goron 2010.
 Mae atgynhyrchu heb ganiatâd yn torri hawffrwynt y Goron a gall hyn arwain at erlyniad neu achos sifil. Llywodraeth Cynulliad Cymru. Rhif trwydded 100017916.

1.2 The proportion of households within 15, 30, 45, and 60 minutes travel time threshold(s) of GP Surgeries between 10 a.m. and 12 p.m. on a Tuesday (ii. by car)



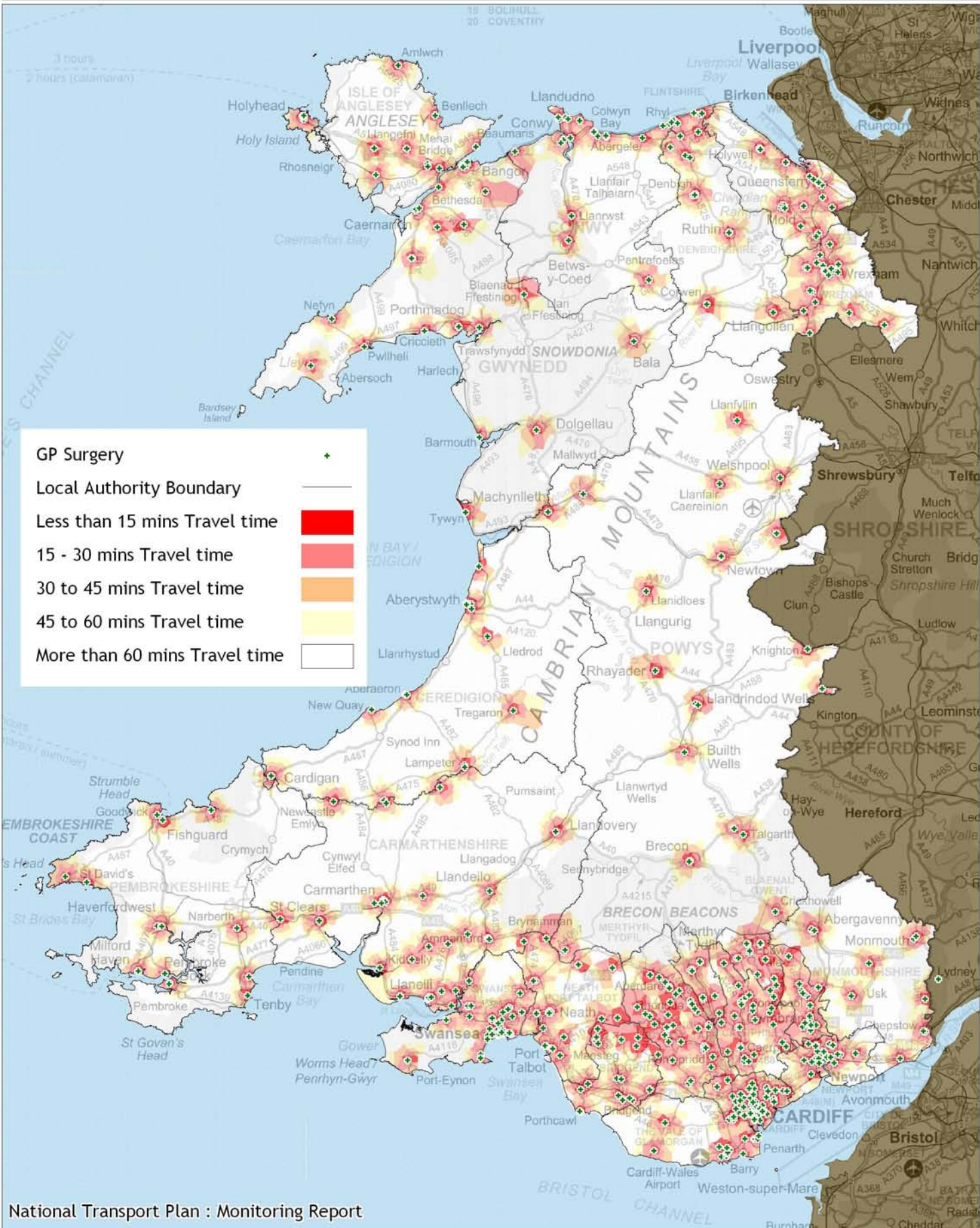
This map is based upon the Ordnance Survey material with the permission of Ordnance Survey on behalf of The Controller of Her Majesty's Stationery Office, © Crown copyright 2010. Unauthorised reproduction infringes Crown copyright and may lead to prosecution or civil proceedings. Welsh Assembly Government. Licence Number: 100017916
 Mae'r map hwn yn seiliedig ar ddeunydd yr Arolwg Ordnans gyda chaniatâd Arolwg Ordnans ar ran Rheolwr Llyfrfa Ei Mawrhydi, © Hawffraint y Goron 2010.
 Mae atgynhyrchu heb ganiatâd yn torri hawffraint y Goron a gall hyn arwain at erlyniad neu achos sifil. Llywodraeth Cynulliad Cymru. Rhif trwydded 100017916.

1.2 The proportion of households within 15, 30, 45, and 60 minutes travel time threshold(s) of GP Surgeries between 10 a.m. and 12 p.m. on a Tuesday (iii. by cycling)



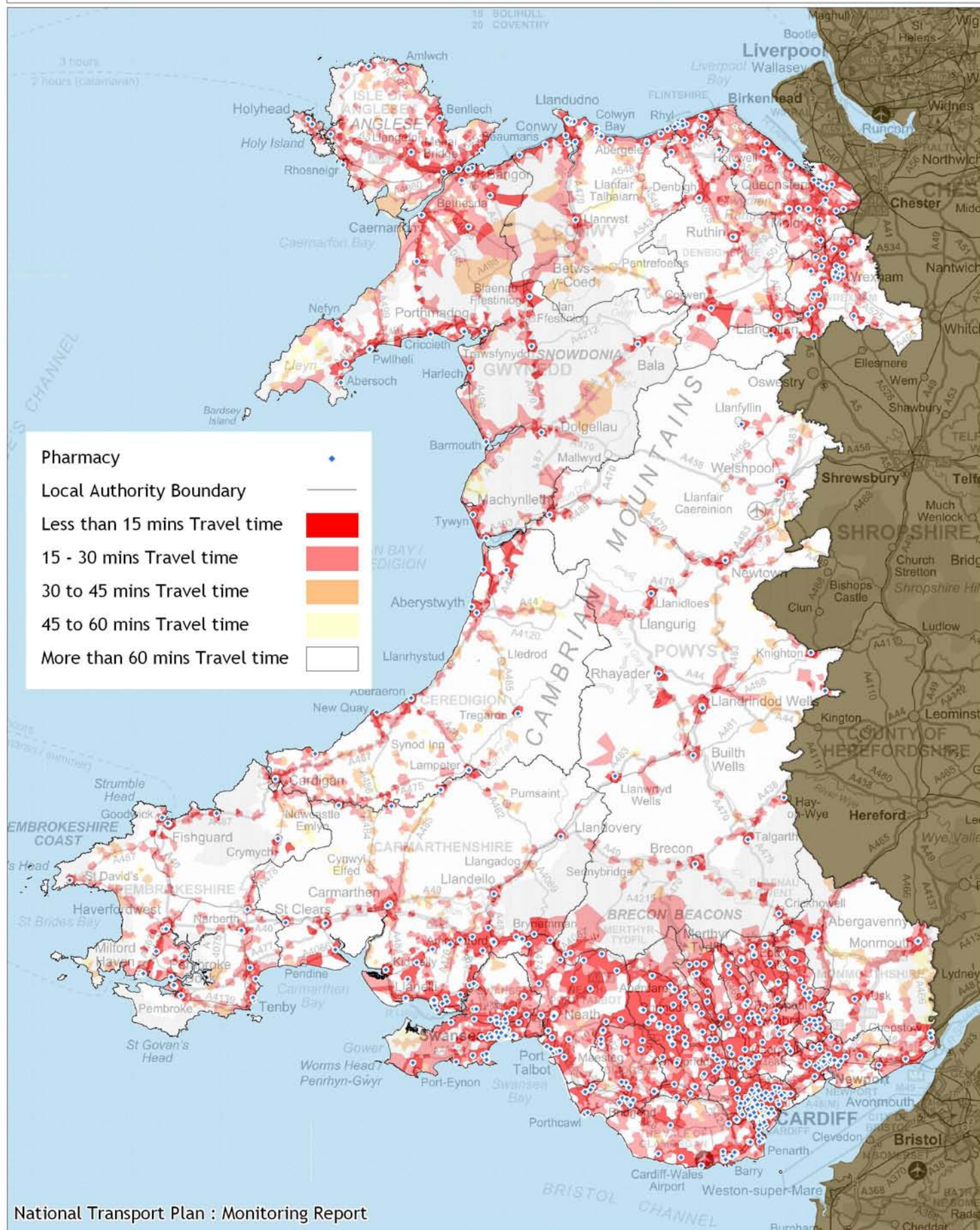
This map is based upon the Ordnance Survey material with the permission of Ordnance Survey on behalf of The Controller of Her Majesty's Stationery Office, © Crown copyright 2010. Unauthorised reproduction infringes Crown copyright and may lead to prosecution or civil proceedings. Welsh Assembly Government. Licence Number: 100017916
 Mae'r map hwn yn seiliedig ar ddeunydd yr Arolwg Ordnans gyda chaniatâd Arolwg Ordnans ar ran Rheolwr Llyfrfa Ei Mawrhydi, © Hawffrwynt y Goron 2010.
 Mae atgynhyrchu heb ganiatâd yn torri hawffrwynt y Goron a gall hyn arwain at erlyniad neu achos sifil. Llywodraeth Cynulliad Cymru. Rhif trwydded 100017916.

1.2 The proportion of households within 15, 30, 45, and 60 minutes travel time threshold(s) of GP Surgeries between 10 a.m. and 12 p.m. on a Tuesday (iv. by walking)



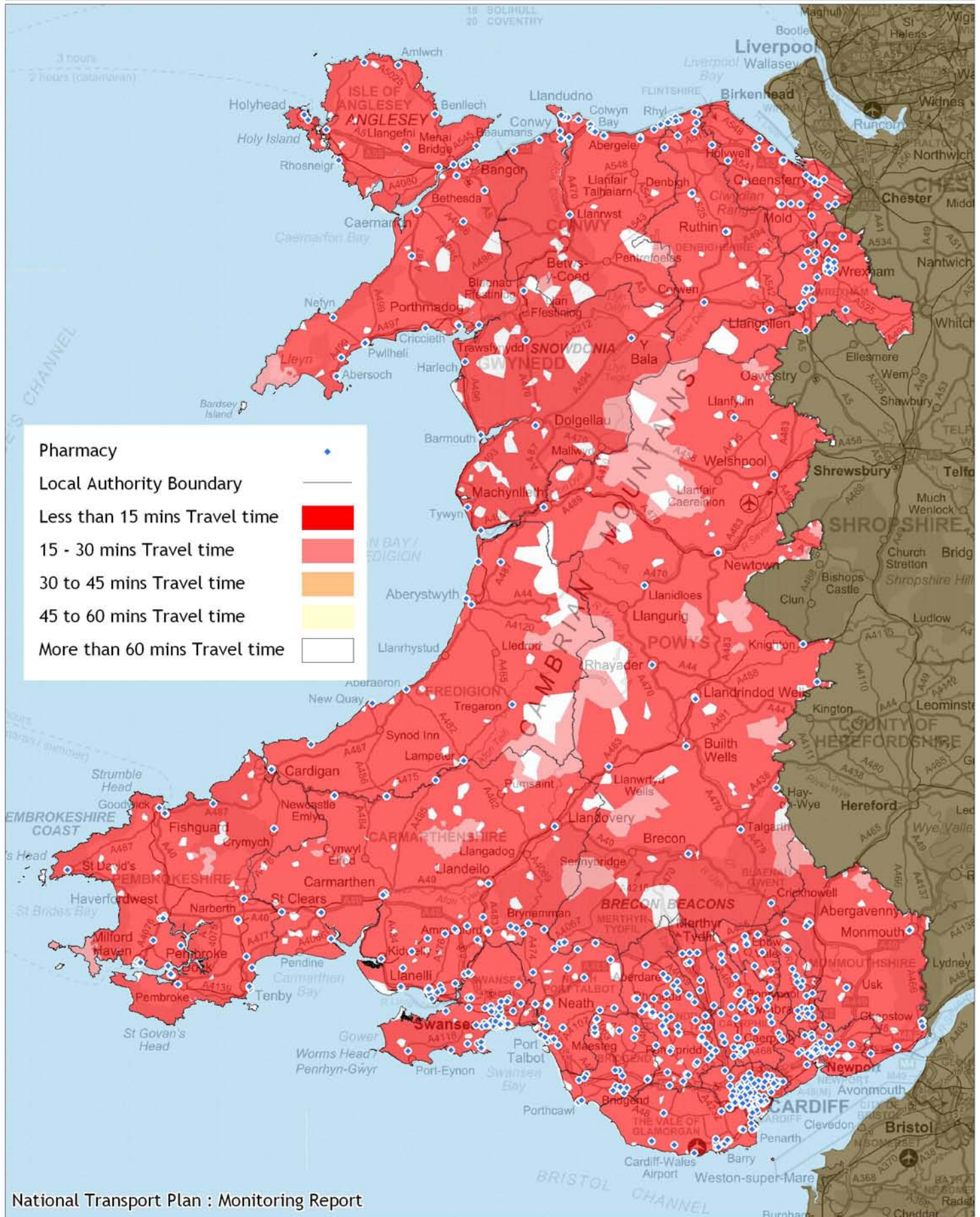
This map is based upon the Ordnance Survey material with the permission of Ordnance Survey on behalf of The Controller of Her Majesty's Stationery Office, © Crown copyright 2010. Unauthorised reproduction infringes Crown copyright and may lead to prosecution or civil proceedings. Welsh Assembly Government, Licence Number: 100017916
Mae'r map hwn yn seiliedu ar ddeunydd yr Arrolwg Ordnans gyda chaniatâd Arrolwg Ordnans ar ran Rheolwr Llyfrfa El Mawrhydd, © Hawffraint y Goron 2010.
Mae atgynhyrchu heb ganiatâd yn torri hawliau y Goron a gall hyn arwain at erlyniad neu achos sifil. Llywodraeth Cymruall Cymru, Rhif trwydded 100017916.

1.3 The proportion of households within 15, 30, 45, and 60 minutes travel time threshold(s) of Pharmacies between 10 a.m. and 12 p.m. on a Tuesday (i. by public transport)



This map is based upon the Ordnance Survey material with the permission of Ordnance Survey on behalf of The Controller of Her Majesty's Stationery Office, © Crown copyright 2010. Unauthorised reproduction infringes Crown copyright and may lead to prosecution or civil proceedings. Welsh Assembly Government. Licence Number: 100017916
 Mae'r map hwn yn seiliedig ar ddeunydd yr Arolwg Ordnans gyda chaniatâd Arolwg Ordnans ar ran Rheolwr Llyfrfa Ei Mawrhydi, © Hawffraint y Goron 2010.
 Mae atgynhyrchu heb ganiatâd yn torri hawffraint y Goron a gall hyn arwain at erlyniad neu achos sifil. Llywodraeth Cynulliad Cymru. Rhif trwydded 100017916.

1.3 The proportion of households within 15, 30, 45, and 60 minutes travel time threshold(s) of Pharmacies between 10 a.m. and 12 p.m. on a Tuesday (ii. by car)



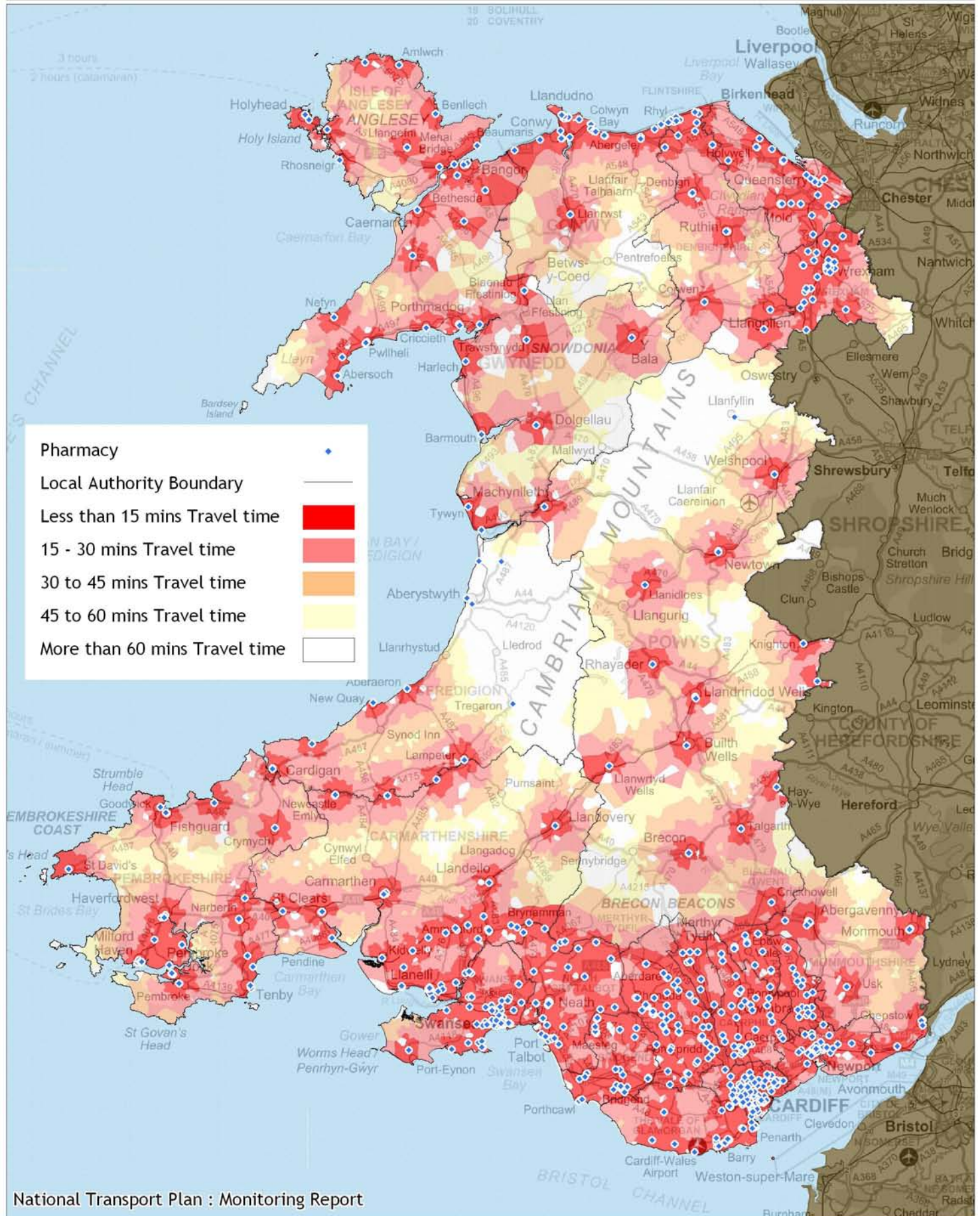
National Transport Plan : Monitoring Report

This map is based upon the Ordnance Survey material with the permission of Ordnance Survey on behalf of The Controller of Her Majesty's Stationery Office, © Crown copyright 2010. Unauthorised reproduction infringes Crown copyright and may lead to prosecution or civil proceedings. Welsh Assembly Government. Licence Number: 100017916

Mae'r map hwn yn seiliedig ar ddeunydd yr Arolwg Ordnans gyda chaniatâd Arolwg Ordnans ar ran Rheolwr Llyfrfa Ei Mawrhydi, © Hawffraint y Goron 2010.

Mae atgynhyrchu heb ganiatâd yn torri hawffraint y Goron a gall hyn arwain at erlyniad neu achos sifil. Llywodraeth Cynulliad Cymru. Rhif trwydded 100017916.

1.3 The proportion of households within 15, 30, 45, and 60 minutes travel time threshold(s) of Pharmacies between 10 a.m. and 12 p.m. on a Tuesday (iii. by cycling)



This map is based upon the Ordnance Survey material with the permission of Ordnance Survey on behalf of The Controller of Her Majesty's Stationery Office, © Crown copyright 2010. Unauthorised reproduction infringes Crown copyright and may lead to prosecution or civil proceedings. Welsh Assembly Government. Licence Number: 100017916
 Mae'r map hwn yn seiliedig ar ddeunydd yr Arolwg Ordnans gyda chaniatâd Arolwg Ordnans ar ran Rheolwr Llyfrfa Ei Mawrhydi, © Hawffrwynt y Goron 2010.
 Mae atgynhyrchu heb ganiatâd yn torri hawffrwynt y Goron a gall hyn arwain at erlyniad neu achos sifil. Llywodraeth Cynulliad Cymru. Rhif trwydded 100017916.

Pharmacy (Blue dot symbol)

Local Authority Boundary (Black line symbol)

Less than 15 mins Travel time (Red color)

15 - 30 mins Travel time (Orange color)

30 to 45 mins Travel time (Yellow color)

45 to 60 mins Travel time (White color)

More than 60 mins Travel time (White color)

This map is based upon the Ordnance Survey material with the permission of Ordnance Survey on behalf of The Controller of Her Majesty's Stationery Office, © Crown copyright 2010. Unauthorised reproduction infringes Crown copyright and may lead to prosecution or civil proceedings. Welsh Assembly Government, Licence Number: 100017916
Mae'r map hwn yn seiliedu ar ddeunydd yr Arrolwg Ordnans gyda chaniatâd Arrolwg Ordnans ar ran Rheolwr Llyfrfa Ei Mawrhydd, © Hawffraint y Goron 2010.
Mae atgynhyrchu heb ganiatâd yn torri hawliau y Goron a gall hyn arwain at erlyniad neu achos sifil. Llywodraeth Cymruall Cymru, Rhif trwydded 100017916.