



Index of Market Services for Wales: 2016 Quarter 3

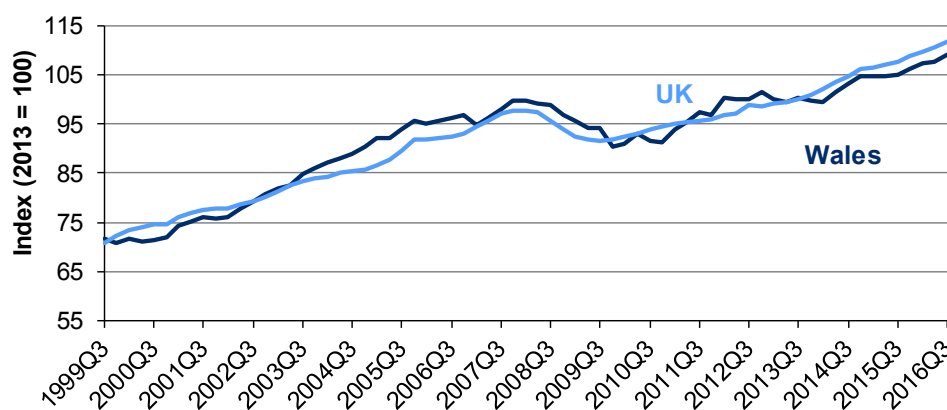
26 Jan 2017
SFR 4/2017

1. Background and key points

The Index of Market Services accounts for approximately 46 per cent of the Welsh economy. The Welsh Government also publishes an [Index of Production and Index of Construction](#) quarterly statistical release which accounts for a further 27 per cent of the Welsh economy.

Output has increased in Wales and the UK at a similar rate in recent time periods. When comparing the latest four quarters to the previous four quarters, the Index of Market Services increased 2.6 per cent in Wales and 3.2 per cent in the UK. The increase in Wales is largely accounted for by increases in output from *Financial & Insurance Activities*, *Professional, Scientific & Technical Activities*, and *Administrative & Support Service Activities*. The increase in the UK is mostly accounted for by *Distribution*, *Information & Communication Activities*, and *Professional, Scientific & Technical Activities*. (Chart 1.1)

Chart 1.1: Index of market services



When comparing the current quarter with the previous quarter, output increased at a similar rate in Wales and the UK (up 1.4 and 1.2 per cent respectively). The increase in Wales is largely accounted for by an increase in the output of *Administrative & Support Service Activities* whilst the increase in the UK is largely accounted for by an increase in the output of *Information & Communication Activities*.

About this release

The Index of Market Services for Wales is a quarterly index showing short term movements in the output of companies in the market service sector within Wales. This release includes data up to 2016 quarter 3 (July to September).

In this release

Background and key points	1
Sector changes	3
Results for sub-index of market services	4
Key quality information	9
Appendix A: Sections of SIC	13
Appendix B: Reference tables	14

The Index of Market Services for Wales is composed of nine industries covering the Standard Industrial Classification (SIC) 2007:

- Section G: Distribution
- Section H: Transport
- Section I: Accommodation and Food Service Activities
- Section J: Information and Communication Activities
- Section K: Financial and Insurance Activities
- Section L: Real Estate Activities
- Section M: Professional, Scientific and Technical Activities
- Section N: Administrative and Support Service Activities
- Sections R, S & T: Other Services

The largest industries within the Index of Market Services for Wales are Real Estate Activities and Distribution accounting for 24.2 per cent and 22.7 per cent respectively. The smallest industries are Information & Communication Activities (accounting for 5.9 per cent) and Accommodation & Food Service Activities (accounting for 6.8 per cent). For further information on these industry sections and sub-sectors see Appendix A.

Table 1.1 shows the top level index and the industries within the Index of Market Services for Wales. Percentage changes are provided to show the longer term trend (comparing the latest four quarters with the previous four quarters) and the short term trend (comparing the latest quarter with the previous quarter) for both Wales and the UK.

Table 1.1: Seasonally Adjusted Indices of Output for Wales ⁽¹⁾

(2013 = 100)

	2015			2016			Latest percentage change			
							4 qtrs to previous 4 qtrs		qtr to previous qtr	
	Q2	Q3	Q4	Q1	Q2	Q3	Wales	UK ⁽²⁾	Wales	UK ⁽²⁾
Market Services	104.7 (r)	105.0 (r)	106.1	107.3 (r)	107.6 (r)	109.1	2.6	3.2	1.4	1.2
Distribution	103.9 (r)	102.3	102.6 (r)	102.7	105.1 (r)	103.4	-0.5	4.4	-1.6	1.0
Transport	114.4 (r)	113.8 (r)	114.3 (r)	114.3 (r)	113.6 (r)	115.1	2.5	-1.3	1.3	0.2
Accommodation & Food Service Activities	103.3 (r)	103.9 (r)	103.1 (r)	109.1 (r)	107.2 (r)	112.5	4.3	4.7	4.9	1.6
Information & Communication Activities	102.2 (r)	104.2 (r)	102.3 (r)	106.1 (r)	106.9 (r)	111.9	2.3	6.0	4.6	4.2
Financial & Insurance Activities	97.6 (r)	96.9 (r)	101.8 (r)	106.6 (r)	109.8 (r)	110.6	7.2	2.4	0.7	1.2
Real Estate Activities	105.0 (r)	106.2 (r)	106.3 (r)	107.2	106.0 (r)	106.2	2.0	1.1	0.2	0.2
Professional, Scientific & Technical Activities	95.3 (r)	104.0 (r)	105.7 (r)	104.7 (r)	105.8 (r)	108.1	6.4	4.5	2.2	0.8
Administrative & Support Service Activities	117.1 (r)	116.8 (r)	121.9 (r)	124.8 (r)	122.5 (r)	128.3	6.5	3.0	4.8	1.4
Other Services	107.4 (r)	102.5 (r)	104.8 (r)	101.9 (r)	100.9 (r)	105.7	-0.7	4.8	4.7	1.3

(1) Revisions to the series are normally made each quarter to take account both of more recent information and improved seasonal factors.

(2) UK figures as published by the Office for National Statistics on 23 December 2016.

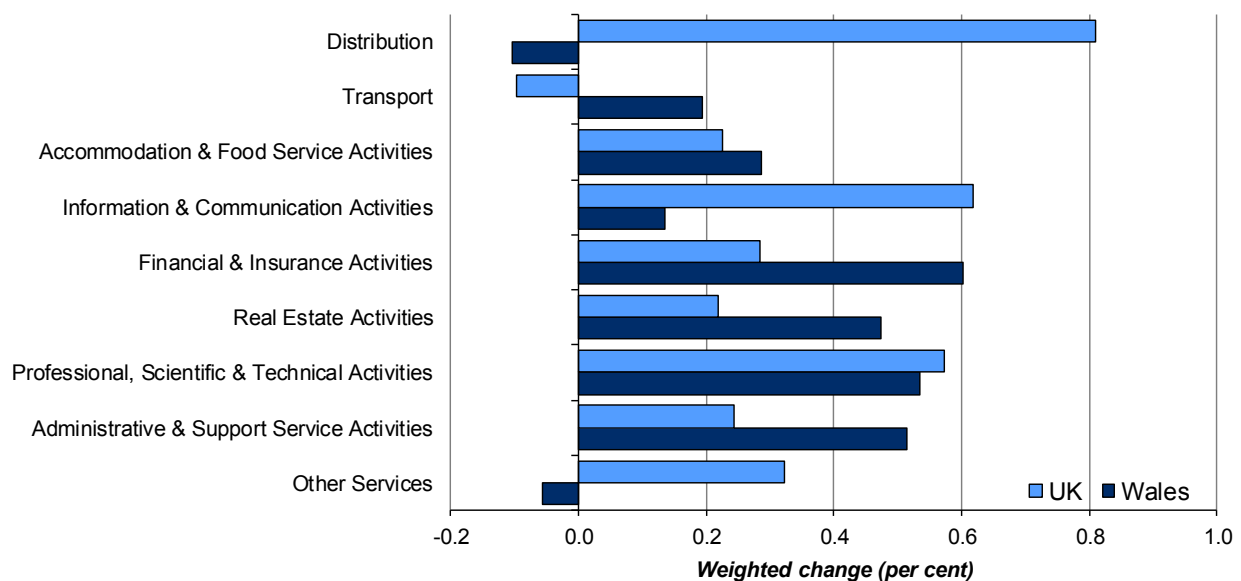
(r) Data revised since last publication

2. Sector changes

This section examines the outputs of each industry within the Index of Market Services and their respective impact in proportion to the overall index.

Chart 2.1 shows a comparison of the weighted data for the latest four quarters with those for the previous four quarters. The changes show the differences between each section's output and their respective impacts in proportion to their weighted contribution within the overall Index of Market Services. The weighted changes are derived by taking the proportion (weights) of each of the sub-sectors (using the 2013 GVA weights) and multiplying this by the difference in the time periods.

Chart 2.1: Contribution to overall percentage change, latest four quarters compared with previous four quarters



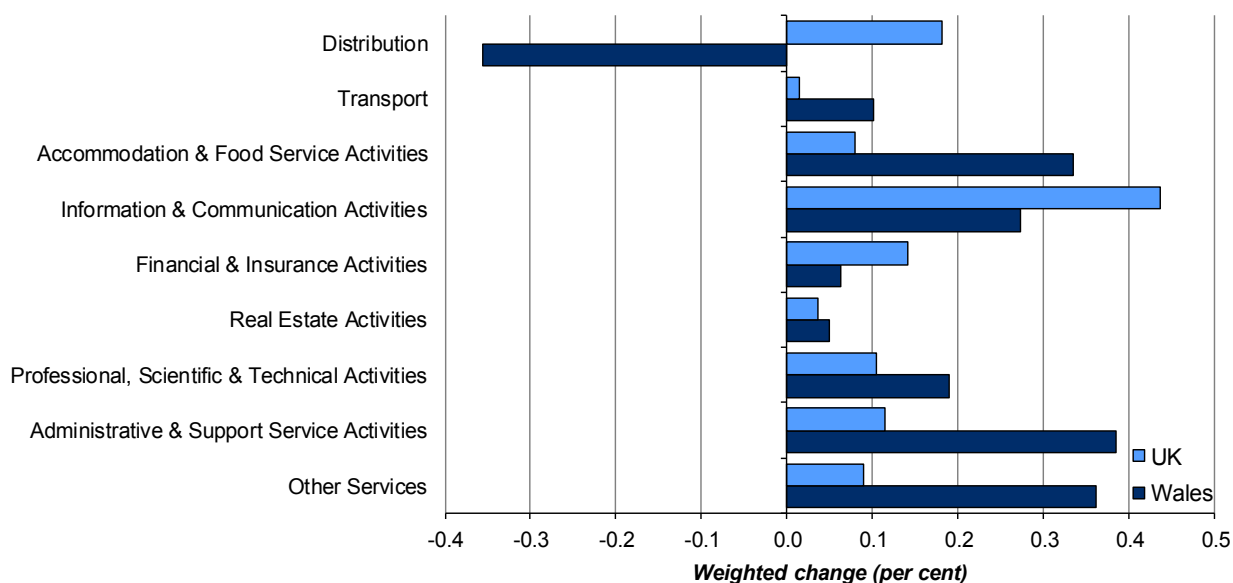
Seven of the nine industries within the Index of Market Services for Wales have shown growth over the past four quarters, with *Financial & Insurance Activities*, *Professional, Scientific & Technical Activities* and *Administrative & Support Service Activities* showing the largest positive weighted changes. Two industries declined, with *Distribution* showing the largest negative weighted change.

Eight of the nine industries for the UK showed growth in output over the past four quarters with *Distribution*, *Information & Communication Activities* and *Professional, Scientific & Technical Activities* showing the largest positive weighted changes. *Transport* had the only fall in output.

Chart 2.2 shows a comparison of the weighted data for the current quarter with the previous quarter. Seven of the nine industries within the Index of Market Services for Wales have shown growth over the quarter and one industry declined. One industry was unchanged (to one decimal place). In the UK there was growth in seven industries and two were unchanged.

Administrative & Support Service Activities has shown the largest positive weighted change in Wales and *Information & Communication Activities* showed the largest positive change in the UK. *Distribution* had the only fall in output in Wales.

Chart 2.2: Contribution to quarterly percentage change, current quarter compared with previous quarter



3. Results for sub-indices of index of market services

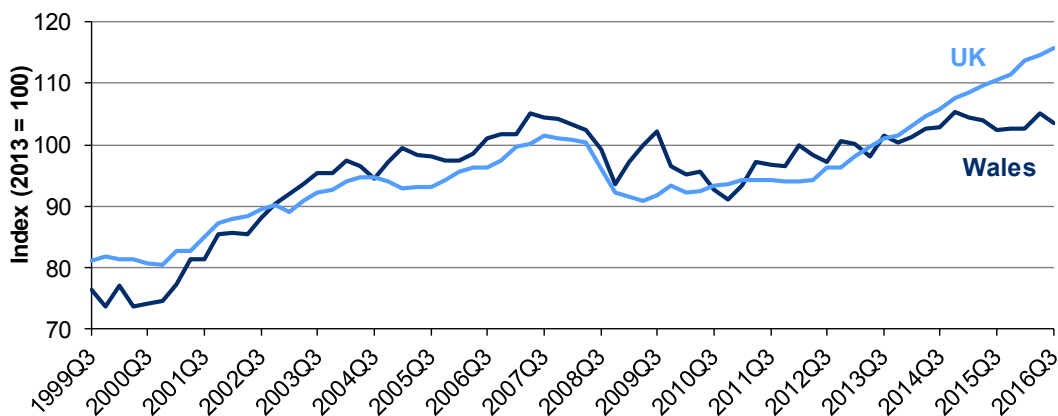
This section shows the latest results for the nine industries which comprise the Index of Market Services. References to the longer term refer to the latest four quarters compared to the previous four quarters and references to the short term refer to comparisons for the current quarter with the previous quarter. The Welsh results for some data series are more volatile than the UK counterparts because of smaller survey samples.

Table B1 in Appendix B shows the latest data with the percentage change over the short and longer term. Tables B2a-c show time series for the Index of Market Services industry sectors and Tables B3a-c show time series for the industry sub-sectors.

3.1: Index of distribution

Between 1999 and the start of 2008 the Index of Distribution for both Wales and the UK rose, but both fell in 2008, during the 2008-09 recession. The index in Wales has fluctuated since, but has slightly increased overall. The UK was broadly unchanged until the latter half of 2012 and has risen steadily since. (*Chart 3.1*)

Chart 3.1: Index of distribution

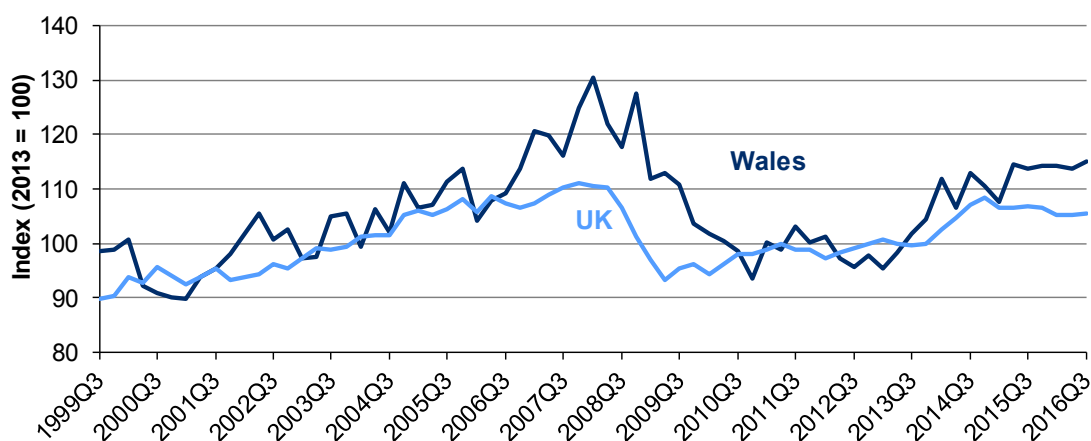


The Index of Distribution for Wales decreased by 0.5 per cent over the longer term with two of the three sub-sectors falling and one increasing. *Wholesale Trade except Motor Vehicles* had the largest fall amongst the three sub-sectors (down 4.5 per cent). The UK index increased by 4.4 per cent with all three sub-sectors having increases. Over the short term Wales decreased by 1.6 per cent, with two of the three sub-sectors decreasing. The UK increased by 1.0 per cent with two sub-sectors increasing.

3.2: Index of Transport ¹

From the end of 2008 the Index of Transport for Wales fell until the start of 2011 and then fluctuated until early 2013. There was then a general upward trend in 2013 and has showed little change overall since. The UK index fell between 2008 quarter 1 and 2009 quarter 2 (in line with the 2008-09 recession), then remained broadly unchanged. The index increased in 2014 and has shown little change since. (Chart 3.2)

Chart 3.2: Index of transport



The Index of Transport for Wales increased by 2.5 per cent over the longer term. Of the two sub-sectors, *Land, Water & Air Transport* increased by 9.6 per cent whilst *Warehousing & Transport Support Activities; Postal & Courier Activities* decreased by 1.4 per cent. The UK index fell 1.3 per cent over the longer term despite *Land, Water & Air Transport* increasing by 0.2 per cent. Over the short term Wales increased by 1.3 per cent, with one sub-sector increasing and the other decreasing. The UK index increased by 0.2 per cent, with one sub-sector increasing and the other decreasing.

3.3: Index of accommodation and food service activities

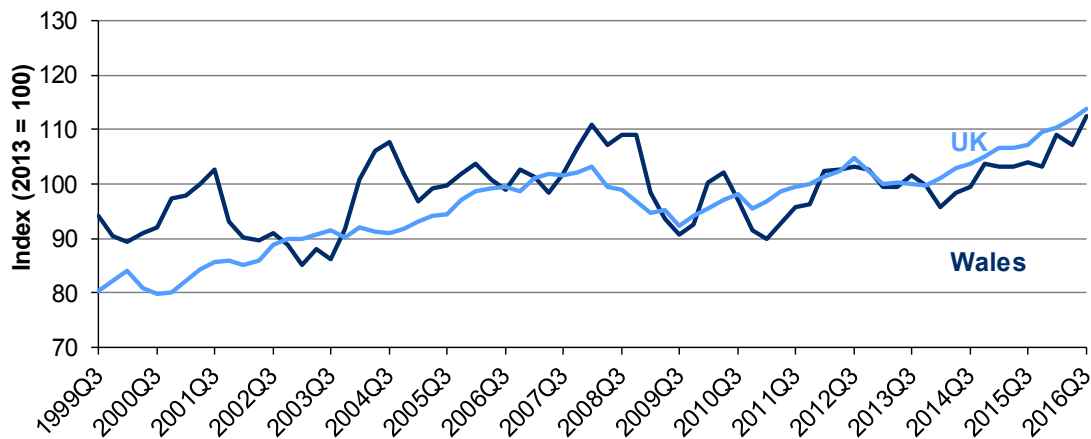
Between 1999 and 2008 the Index of Accommodation and Food Service Activities for Wales fluctuated and then fell overall between late 2008 and 2011 quarter 1. Since then the index increased overall to 2012 quarter 4 and has steadily increased since 2015 quarter 2. The UK index rose between 1999 and the start of 2008, it then fell before rising overall since 2009 quarter 3. (Chart 3.3)

Over the longer term the Index of Accommodation and Food Service Activities for Wales increased by 4.3 per cent, with both sub-sectors increasing. *Accommodation* increased by 8.2 per cent and *Food & Beverage Service Activities* increased by 2.2 per cent. The UK index increased by 4.7 per

¹ Civil Aviation Authority data is no longer available and data is currently estimated based on growth in previous years.

cent, with *Accommodation* and *Food & Beverage Service Activities* increasing by 6.9 per cent and 3.9 per cent respectively. Over the short term the Index of Accommodation and Food Service Activities for Wales increased by 4.9 per cent, with both sub-sectors increasing. This is the largest short-term increase amongst the nine industries for Wales. The UK index increased by 1.6 per cent.

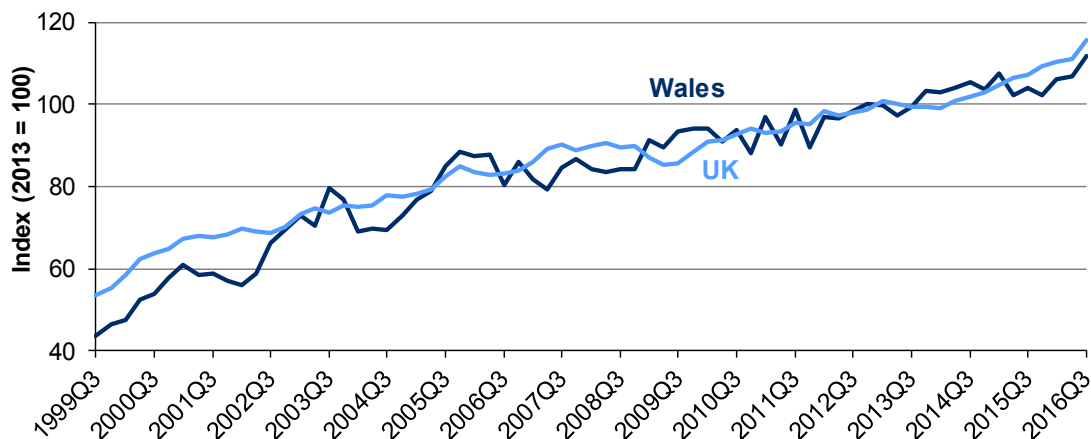
Chart 3.3: Index of accommodation and food service activities



3.4: Index of information and communication activities

Between 1999 and 2010 the Index of Information and Communication Activities for Wales increased and then fluctuated until early 2012. The index then increased until late 2014 and has fluctuated since. The UK index rose between 1999 and 2008, fell during the 2008-09 recession and has steadily risen overall since. (Chart 3.4)

Chart 3.4: Index of information and communication activities

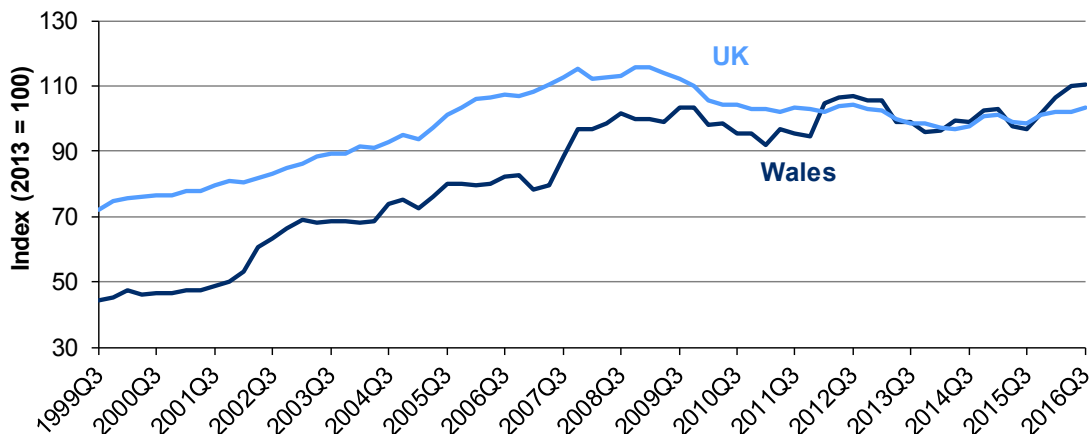


The Index of Information and Communication Activities for Wales increased over the longer term by 2.3 per cent, with all three sub-sectors increasing. The UK index increased over the same period by 6.0 per cent, with two sub-sectors increasing. This is the largest longer term increase amongst the nine industries for the UK. Over the short term the Index of Information and Communication Activities for Wales increased by 4.6 per cent with two sub-sectors increasing. The UK index increased over the short term by 4.2 per cent, with all three sub-sectors increasing. This is the largest short-term increase amongst the nine industries for Wales.

3.5: Index of financial and insurance activities

Between 1999 and 2009 quarter 3 the Index of Finance and Insurance Activities for Wales increased overall, and has fluctuated since, but increased overall since 2015 quarter 3. The UK index rose between 1999 and early 2009, then fell slightly up to the start of 2014 and has shown little change since. (Chart 3.5)

Chart 3.5: Index of financial and insurance activities

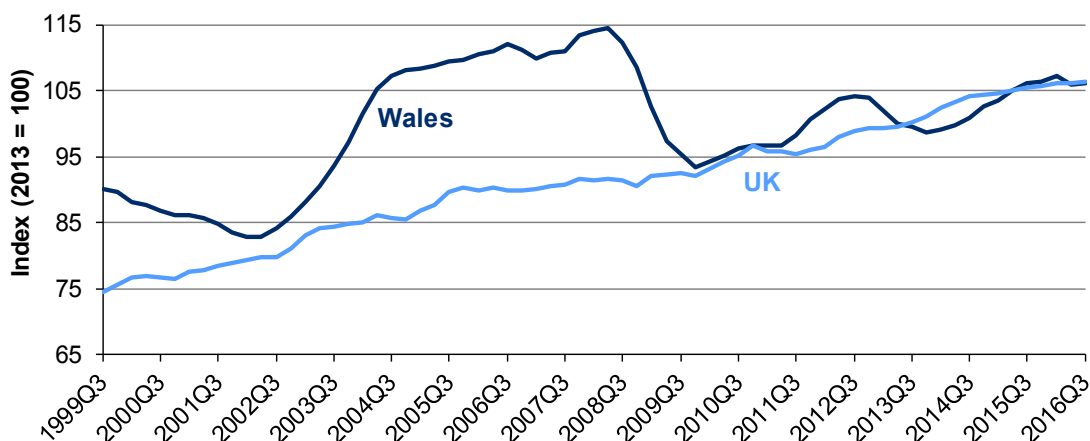


Over the longer term the Index of Financial and Insurance Activities increased in Wales by 7.2 per cent and increased in the UK by 2.4 per cent. This is the largest longer-term increase amongst the nine industries for Wales. Over the short term the Index of Financial and Insurance Activities increased by 0.7 per cent in Wales and increased by 1.2 per cent in the UK.

3.6: Index of real estate activities

Between 1999 and 2007 the Index of Real Estate Activities for Wales increased, after which it fell sharply to 2009 quarter 4 (which covers the 2008-09 recession). Since then it increased until early 2012, before falling slightly and has increased overall since mid 2014. The UK index has steadily risen between 1999 and the latest quarter.

Chart 3.6: Index of real estate activities

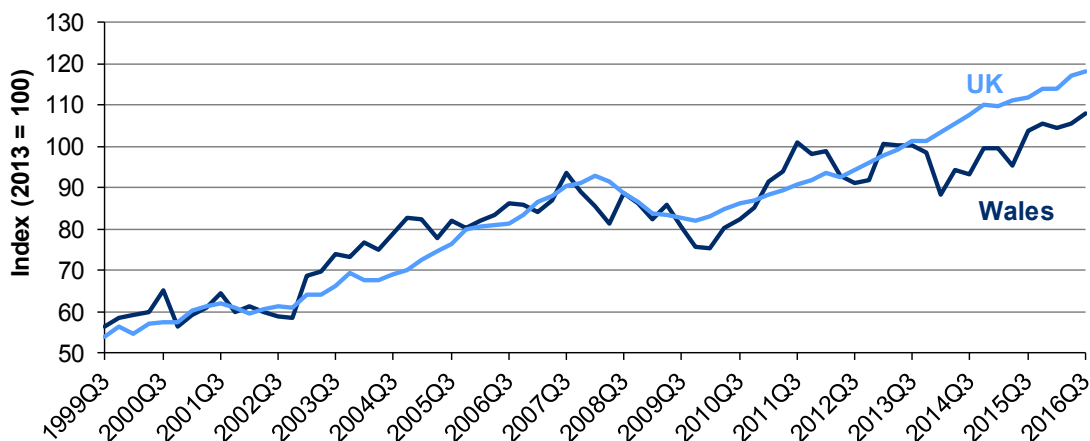


The Index of Real Estate Activities for Wales increased by 2.0 per cent over the longer term with *Owner Occupied Dwellings* (OOD) increasing by 2.2 per cent and *Real Estate Activities excluding OOD* increasing by 0.5 per cent. The UK index increased by 1.1 per cent with both of the sub-sectors having increases. Over the short term the Index of Real Estate Activities for both Wales and the UK increased by 0.2 per cent.

3.7: Index of professional, scientific and technical activities

Between 1999 and 2007 quarter 3 the Index of Professional, Scientific and Technical Activities for Wales rose overall; it then fell until 2010 quarter 1 and increased up to 2011 quarter 3. The index has fluctuated since. The UK index rose between 1999 and 2008 quarter 1, then fell over the recession and has steadily risen since. (Chart 3.7)

Chart 3.7: Index of professional, scientific and technical activities

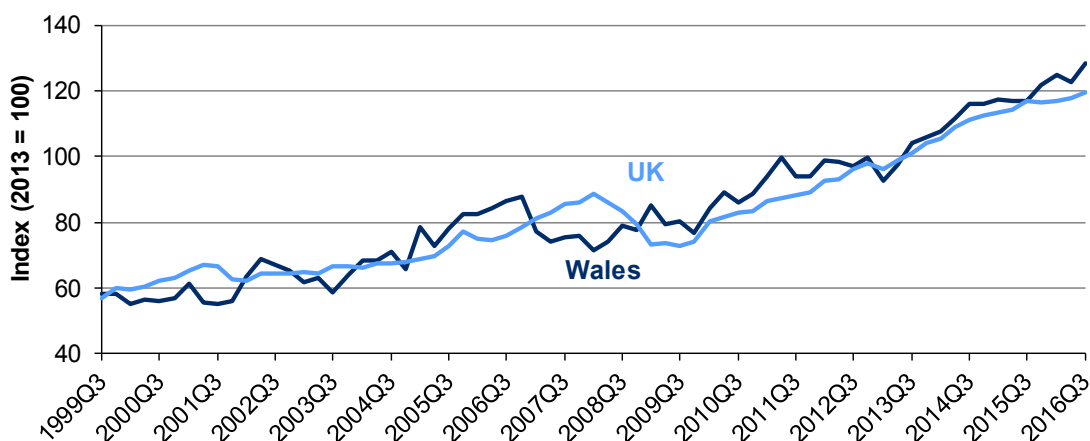


The Index of Professional, Scientific and Technical Activities increased over the longer term in both Wales and the UK (by 6.4 per cent and 4.5 per cent respectively). Over the short term the Index of Professional, Scientific and Technical Activities increased in both Wales and the UK (by 2.2 per cent and 0.8 per cent respectively).

3.8: Index of administrative and support service activities

The Index of Administrative and Support Service Activities for Wales increased overall until 2006 quarter 4; it then fell to early 2008 but has increased overall since. The UK index rose between 1999 and the end of 2007, then fell over the course of the recession of 2008-09 and increased since. (Chart 3.8)

Chart 3.8: Index of administrative and support service activities

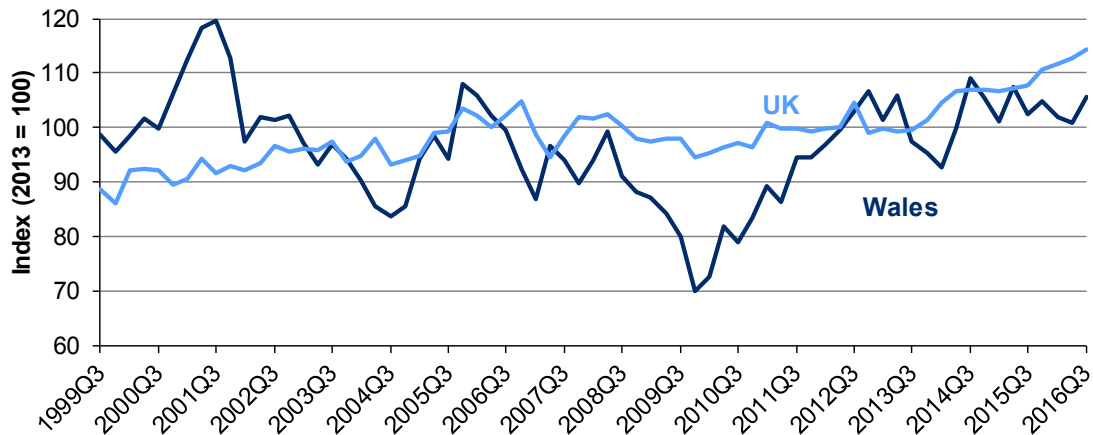


The Index of Administrative and Support Service Activities increased in both Wales and the UK over the longer term (up 6.5 per cent and 3.0 per cent respectively). Over the short term both Wales and the UK increased by 4.8 per cent and 1.4 per cent respectively.

3.9: Index of other services

Between 1999 and the end of 2009 the Index of Other Services for Wales has fluctuated, decreasing overall. The index then increased overall until the end of 2012. It has since fluctuated, increasing in the last quarter. The UK index increased between 1999 and mid-2005 then remained relatively stable until late 2012. The index has increased since then.

Chart 3.9: Index of other services



Over the longer term the Index of Other Services decreased in Wales by 0.7 per cent and increased in the UK by 4.8 per cent. Over the short term the Index of Other Services increased by 4.7 per cent in Wales and increased by 1.3 per cent in the UK.

4. Key quality information

4.1 Relevance

This release provides estimates of output in market service industries for Wales and the UK. The UK market services estimates are taken from the Index of Services release from the Quarterly National Accounts release from the ONS. These statistics are used by the Welsh Government to monitor the output for these industries in the Welsh economy as well as providing comparisons with the UK. They are also used by other public sector organisations, businesses, academia and private individuals to identify the key trends in production and construction output for Wales.

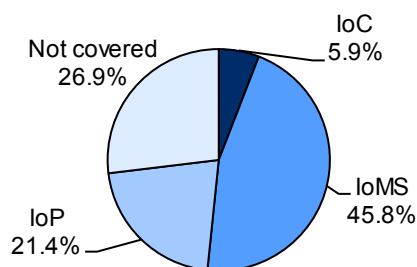
The Index of Market Services shows the quarterly movements in gross output of the market services sector in Wales. Gross output is used as a proxy for Gross Value Added (GVA), measured by a variety of data sources since GVA cannot currently be measured to a sufficient timeliness for the production of short term indices.

The indices are estimated using a combination of:

- Directly collected data from existing monthly surveys.
- A quarterly top up of specifically Welsh data from large inter-regional businesses.
- Post stratification methodology.
- Volume data from a number of different sources.
- Directly collected data from a small additional quarterly survey sent to wholly Welsh finance businesses.

The majority of the data comes from the ONS Monthly Business Survey. The results from this survey are used to calculate the relative movements of the individual series and these in turn are weighted together to produce the overall index. The weights are derived from the distribution of GVA for Wales using the Regional Accounts. Both volume and sales data are used to compile the index. GVA is a measure of economic activity at basic prices, which includes taxes (less subsidies) on production but excludes taxes (less subsidies) on products. The sales data are deflated to 2010 prices using the deflators produced for the UK index.

The following pie chart represents the percentage that the Index of Market Services, Index of Production and Index of Construction for Wales have in the overall Regional GVA by industry. Industries not covered include agriculture and fishing industries and the public sector.



4.2 Accuracy

Estimates are subject to revision. Estimates on individual quarters fluctuate due to random sampling error and therefore it is recommended that emphasis is placed on changes in the average of the latest four quarters compared to the average of the previous four quarters for more volatile series. The entire time series is open to revisions arising from changes in the seasonally adjusted series from the addition of a new data point, and changes to the last 15 months turnover data from late or revised survey returns. [More information on our revisions policy](#).

Table 4.1 shows the revisions made (in index points) to the previous quarter's estimates.

Table 4.1: Comparison of current and previous estimates of 2016 Quarter 2 ^a

	Current	Previous	Revision
Index of Market Services	107.6	107.9	-0.3
Distribution	105.1	105.8	-0.7
Transport	113.6	111.0	2.6
Accommodation and Food Service Activities	107.2	105.5	1.6
Information and Communication Activities	106.9	109.5	-2.6
Financial and Insurance Activities	109.8	108.8	1.0
Real Estate Activities	106.0	107.0	-1.0
Professional, Scientific and Technical Activities	105.8	104.9	0.8
Administrative and Support Service Activities	122.5	124.3	-1.8
Other Services	100.9	101.8	-0.9

^a Numbers in the table have been rounded to one decimal place therefore there may be slight discrepancies between the constituent items and the overall revision shown.

4.3 Timeliness and punctuality

This release is published quarterly. It is the earliest official indicator of the performance of the Welsh production and construction industries other than the UK figures which are produced by the Office for National Statistics monthly. There is approximately a 14 week lapse of time between publication and the period to which the release refers to.

4.4 Accessibility and clarity

This First Release and the headline statistics are available on the [Welsh Government Statistics website](#). Additional information on the Index of Market Services is available on [StatsWales](#), in addition to the data from 1998. A Summary Quality Report containing information on the quality of the Index of Market Services as well as a summary of methods used to compile the output is available on the background tab on the [Index of Market Services webpage](#).

4.5 Comparability and coherence

The UK and Wales estimates in this release are calculated by the Office for National Statistics (ONS) and are comparable as they use the same methodology. Methodologies relating to the components within the Index of Production and Index of Construction are available from the background information tab on the release webpage. The ONS are currently developing Regional Short term indicators for English regions. The Scottish Government publish a [GDP](#) measure in place of short-term output indicators. The Northern Ireland Assembly publish the Northern Ireland Composite Economic Index ([NICEI](#)), which is also not directly comparable to the Welsh short term output indicators.

Due to difficulties collecting historical data from contributors from earlier time periods, the time series begins in 1998 but early quarters and initial years include a proportion of estimated data. More information is given in the [Summary Quality Report](#).

Throughout the release references to the longer term refer to the latest four quarters compared to the previous four quarters, and references to the short term refer to the current quarter compared to the previous quarter. It is recommended that when looking at the growth rates of volatile series, users should focus on the percentage change over the longer term.

4.6 National Statistics status

The [United Kingdom Statistics Authority](#) has designated these statistics as National Statistics, in accordance with the Statistics and Registration Service Act 2007 and signifying compliance with the [Code of Practice for Official Statistics](#).

National Statistics status means that official statistics meet the highest standards of trustworthiness, quality and public value.

All official statistics should comply with all aspects of the Code of Practice for Official Statistics. They are awarded National Statistics status following an assessment by the UK Statistics Authority's regulatory arm. The Authority considers whether the statistics meet the highest standards of Code compliance, including the value they add to public decisions and debate.

It is Welsh Government's responsibility to maintain compliance with the standards expected of National Statistics. If we become concerned about whether these statistics are still meeting the appropriate standards, we will discuss any concerns with the Authority promptly. National Statistics status can be removed at any point when the highest standards are not maintained, and reinstated when standards are restored.

4.7 Well-being of Future Generations Act (WFG)

The Well-being of Future Generations Act 2015 is about improving the social, economic, environmental and cultural well-being of Wales. The Act puts in place seven well-being goals for Wales. These are for a more equal, prosperous, resilient, healthier and globally responsible Wales, with cohesive communities and a vibrant culture and thriving Welsh language. Under section (10)(1) of the Act, the Welsh Ministers must (a) publish indicators ("national indicators") that must be applied for the purpose of measuring progress towards the achievement of the Well-being goals, and (b) lay a copy of the national indicators before the National Assembly. The 46 national indicators were laid in March 2016.

Information on indicators and associated technical information - [How do you measure a nation's progress? - National Indicators](#)

Further information on the [Well-being of Future Generations \(Wales\) Act 2015](#).

The statistics included in this release could also provide supporting narrative to the national indicators and be used by public services boards in relation to their local well-being assessments and local well-being plans.

4.8 Further details

Links

This document is available at <http://gov.wales/statistics-and-research/index-market-serices>.

The Index of Production and Index of Construction is available at <http://gov.wales/statistics-and-research/index-production-construction>.

Next update

April 2017 (*Statistical First Release for 2016 Q4*)

We want your feedback

We welcome any feedback on any aspect of these statistics which can be provided by email to economic.stats@wales.gsi.gov.uk.

Open Government Licence

All content is available under the [Open Government Licence v3.0](#), except where otherwise stated.



Appendix A: Sections of standard industrial classification² in index of market services, index of production and index of construction

Table A1: Sections and sub-sections in Index of Market Services

SIC 2007	Description
G	Distribution
45	<i>Wholesale and retail trade and repair of motor vehicles and motorcycles</i>
46	<i>Wholesale trade, except of motor vehicles and motorcycles</i>
47	<i>Retail trade, except of motor vehicles and motorcycles</i>
H	Transportation and Storage
49-51	<i>Land, water and air transport</i>
52-53	<i>Warehousing and support activities for transportation; postal and courier activities</i>
I	Accommodation and Food Service Activities
55	<i>Accommodation</i>
56	<i>Food and beverage service activities</i>
J	Information and Communication
JA (58-60)	<i>Publishing, audio-visual and broadcasting activities</i>
JB (61)	<i>Telecommunications</i>
JC (62-63)	<i>Information technology and other information activities</i>
K	Financial and Insurance Activities
L	Real Estate Activities
L x OOD	<i>Real Estate excluding Owner Occupied Dwellings</i>
OOD	<i>Owner Occupied Dwellings</i>
M	Professional, Scientific and Technical Activities
N	Administrative and Support Service Activities
R-T	Other Services

Table A2: Sections and sub-sections in Index of Production

SIC 2007	Description
B	Mining and Quarrying
C	Manufacturing
CA (10-12)	<i>Food products, beverages and tobacco</i>
CB (13-15)	<i>Textiles, wearing apparel and leather products</i>
CC (16-18)	<i>Wood and paper products, and printing</i>
CD (19)	<i>Coke and refined petroleum products</i>
CECF (20-21)	<i>Chemicals and pharmaceuticals</i>
CG (22-23)	<i>Rubber & plastics products, & other non-metallic minerals</i>
CH (24-25)	<i>Basic metals and metal products</i>
CICJ (26-27)	<i>Computer and electronic products</i>
CK (28)	<i>Machinery and equipment n.e.c.</i>
CL (29-30)	<i>Transport equipment</i>
CM (31-33)	<i>Other manufacturing and repair</i>
CIJKL	<i>Engineering and allied industries</i>
CCGM	<i>Other manufacturing</i>
DE	Electricity, gas and water supply

Table A3: Sections in Index of Construction

SIC 2007	Description
F	Construction

² See [UK Standard Industrial Classification of Economic Activities 2007](#) for full category descriptions.

Appendix B: Reference tables

Table B1: Index of Market Services for Wales ⁽¹⁾

SEASONALLY ADJUSTED ⁽²⁾ : 2013 = 100														
2007 STANDARD INDUSTRIAL CLASSIFICATION		Index	Annual Indices		2015			2016			Percentage change: Latest			
											4 qtrs to previous 4 qtrs		qtr to previous qtr	
Section	DESCRIPTION	Weights ⁽³⁾	2014	2015	QTR 2	QTR 3	QTR 4	QTR 1	QTR 2	QTR 3	Wales	UK ⁽⁴⁾	Wales	UK ⁽⁴⁾
IoMS	MARKET SERVICES	1000	102.3 (r)	105.1 (r)	104.7 (r)	105.0 (r)	106.1	107.3 (r)	107.6 (r)	109.1	2.6	3.2	1.4	1.2
G	Distribution	227	103.0	103.3 (r)	103.9 (r)	102.3	102.6 (r)	102.7	105.1 (r)	103.4	-0.5	4.4	-1.6	1.0
45	Wholesale, Retail Sale & Repair of Motor Vehicles	181	108.3	106.9 (r)	107.9 (r)	104.2 (r)	103.6 (r)	106.0 (r)	114.0 (r)	109.1	-1.4	11.0	-4.3	-0.3
46	Wholesale Trade except Motor Vehicles	252	106.4	101.4 (r)	102.1 (r)	99.7 (r)	100.5 (r)	102.4	100.0 (r)	93.0	-4.5	0.6	-7.0	0.1
47	Retail Sales except Motor Vehicles	567	99.8	102.9 (r)	103.3 (r)	102.8 (r)	103.3	101.8	104.5 (r)	106.2	1.7	4.4	1.6	1.9
H	Transport	75	110.5	112.5 (r)	114.4 (r)	113.8 (r)	114.3 (r)	114.3 (r)	113.6 (r)	115.1	2.5	-1.3	1.3	0.2
49-51	Land, Water & Air Transport	420	96.4	95.9 (r)	97.7 (r)	93.6 (r)	99.5 (r)	101.0 (r)	108.2 (r)	106.8	9.6	0.2	-1.3	0.6
52,53	Warehousing & Transport Support Activities; Postal & Courier Activities	580	121.5	125.4 (r)	127.4	129.3	125.8	124.9	118.4 (r)	122.0	-1.4	-3.7	3.0	-0.5
I	Accommodation & Food Service Activities	68	99.3	103.4 (r)	103.3 (r)	103.9 (r)	103.1 (r)	109.1 (r)	107.2 (r)	112.5	4.3	4.7	4.9	1.6
55	Accommodation	367	95.5	99.2 (r)	96.1 (r)	102.3	104.6 (r)	108.1 (r)	101.9 (r)	106.0	8.2	6.9	4.0	0.6
56	Food & Beverage Service Activities	633	101.5 (r)	105.8 (r)	107.4 (r)	104.9 (r)	102.1 (r)	109.7 (r)	110.2 (r)	116.2	2.2	3.9	5.4	2.0
J	Information & Communication Activities	59	104.0	104.0	102.2 (r)	104.2 (r)	102.3 (r)	106.1 (r)	106.9 (r)	111.9	2.3	6.0	4.6	4.2
JA	Publishing, Audio Visual & Broadcasting Activities	144	110.6	105.0 (r)	104.5 (r)	97.8 (r)	96.5 (r)	111.5 (r)	111.3 (r)	127.5	1.1	9.7	14.6	8.8
JB	Telecommunications	467	100.0	104.9 (r)	103.5 (r)	105.9 (r)	109.9 (r)	101.3 (r)	101.5 (r)	100.1	2.2	-2.6	-1.4	0.8
JC	Information Technology & Other Information Activities	389	106.4	102.7 (r)	99.8	104.5	95.3	109.8 (r)	111.9 (r)	120.2	2.9	8.9	7.5	3.4
K	Financial & Insurance Activities	88	99.3	99.9 (r)	97.6 (r)	96.9 (r)	101.8 (r)	106.6 (r)	109.8 (r)	110.6	7.2	2.4	0.7	1.2
L	Real Estate Activities	242	100.6 (r)	105.3 (r)	105.0 (r)	106.2 (r)	106.3 (r)	107.2	106.0 (r)	106.2	2.0	1.1	0.2	0.2
LXOOD	Real Estate Activities excluding OOD	130	96.9	96.5 (r)	96.5 (r)	95.9 (r)	97.0 (r)	98.1 (r)	94.3 (r)	97.1	0.5	2.7	3.0	0.3
OOD	Owner Occupied Dwellings	870	101.2 (r)	106.6 (r)	106.3 (r)	107.7 (r)	107.8 (r)	108.5	107.7 (r)	107.5	2.2	0.5	-0.2	0.1
M	Professional, Scientific & Technical Activities	88	93.9 (r)	101.2 (r)	95.3 (r)	104.0 (r)	105.7 (r)	104.7 (r)	105.8 (r)	108.1	6.4	4.5	2.2	0.8
N	Administrative & Support Service Activities	71	112.8 (r)	118.3 (r)	117.1 (r)	116.8 (r)	121.9 (r)	124.8 (r)	122.5 (r)	128.3	6.5	3.0	4.8	1.4
RST	Other Services	82	101.7 (r)	104.0 (r)	107.4 (r)	102.5 (r)	104.8 (r)	101.9 (r)	100.9 (r)	105.7	-0.7	4.8	4.7	1.3

(1) Revisions to the series are normally made each quarter to take account both of more recent information and improved seasonal factors

(2) All series are seasonally adjusted except JC and K.

(3) Where the sections are highlighted in bold; the weights sum to the Index of Market Services (IoMS = 1,000). There may be some apparent slight discrepancies between the constituent items and the total due to rounding.

(4) UK figures as published by the Office for National Statistics on 23 December 2016.

(r) Data revised since last publication

Table B2a: Index of Market Services and Sections ⁽¹⁾

SEASONALLY ADJUSTED ⁽¹⁾: 2013 = 100

2007 SIC		Market Services		Distribution		Transport		Accommodation & Food Service Activities	
SECTION		Wales	UK	Wales	UK	Wales	UK	Wales	UK
		IoMS		G		H		I	
Weights		1000	1000	227	179	75	73	68	48
Annual Averages									
1999		70.5 (r)	70.5	75.7	82.0	95.9	88.4	91.6	79.8
2000		71.5 (r)	74.1	74.9	81.0	93.4	94.0	92.4	81.2
2001		75.3 (r)	77.1	81.4	84.4	94.2	93.7	98.4	84.5
2002		78.5 (r)	79.0	87.4	89.0	102.6	94.9	89.9	87.4
2003		83.8 (r)	82.8	94.2	91.2	101.3	98.7	87.8	90.5
2004		88.6 (r)	85.2	96.5	94.4	104.7	102.3	104.1	91.4
2005		93.5 (r)	88.9	98.3	93.4	109.7	106.4	99.3	94.7
2006		96.0 (r)	92.4	99.7	96.5	108.7	107.1	101.5	99.0
2007		97.2 (r)	96.2	103.8	100.6	120.4	109.4	102.1	101.7
2008		98.7 (r)	96.1	99.6	97.4	124.3	107.1	109.0	99.6
2009		93.7 (r)	92.0	99.0	91.8	109.8	95.4	93.8	94.1
2010		91.8 (r)	93.5	93.7	92.9	98.6	96.6	97.7	96.6
2011		95.9 (r)	95.5	95.9	94.2	100.5	99.1	93.6	98.8
2012		100.5	97.9	99.0	95.2	98.0	98.6	102.7	102.7
2013		100.0	100.0	100.0	100.0	100.0	100.0	100.0	100.0
2014		102.3 (r)	104.1	103.0	105.2	110.5	105.6	99.3	103.1
2015		105.1 (r)	107.5 (r)	103.3	110.0 (r)	112.5 (r)	106.5 (r)	103.4 (r)	107.5 (r)
1999	QTR 1	68.7 (r)	69.3	75.3	83.5	87.6	85.9	88.7	77.4
	QTR 2	70.9 (r)	69.5	77.5	81.8	98.6	87.6	93.2	79.1
	QTR 3	71.6 (r)	70.8	76.4	81.2	98.7	89.7	94.2	80.3
	QTR 4	70.7 (r)	72.3	73.7	81.8	98.7	90.5	90.3	82.2
2011	QTR 1	94.0 (r)	95.0	93.3	94.3	100.2 (r)	98.9	89.8	96.9
	QTR 2	95.4 (r)	95.3	97.1	94.3	98.8	99.8	92.7	98.7
	QTR 3	97.5 (r)	95.8	96.7	94.3	103.0	98.7	95.7	99.5
	QTR 4	96.8 (r)	95.9	96.6	94.0	100.1	98.9	96.3	100.0
2012	QTR 1	100.5 (r)	96.7	100.0	94.1	101.2 (r)	97.3	102.4	101.2
	QTR 2	100.1 (r)	97.2	98.3	94.2	97.4 (r)	98.4	102.8	102.2
	QTR 3	100.0 (r)	98.9	97.2	96.3	95.7	99.0	103.1 (r)	104.8
	QTR 4	101.4 (r)	98.7	100.6	96.2	97.7 (r)	99.9	102.6	102.3
2013	QTR 1	100.2 (r)	99.3	100.0 (r)	98.0	95.3	100.8	99.3 (r)	100.0
	QTR 2	99.5 (r)	99.6	98.2 (r)	99.6	98.3	99.8	99.4	100.3
	QTR 3	100.4 (r)	100.2	101.4	100.9	101.9 (r)	99.5	101.6 (r)	100.1
	QTR 4	99.9 (r)	100.8	100.4	101.5	104.5	99.9	99.7	99.6
2014	QTR 1	99.4 (r)	102.0	101.2 (r)	103.0	111.8	102.6	95.8 (r)	101.1
	QTR 2	101.4 (r)	103.5	102.6	104.6	106.6 (r)	104.6	98.3 (r)	102.8
	QTR 3	103.3 (r)	104.7	102.8 (r)	105.8	113.0 (r)	106.9	99.5 (r)	103.7
	QTR 4	104.8 (r)	106.2	105.3	107.6	110.4 (r)	108.4	103.7	105.0
2015	QTR 1	104.7 (r)	106.5 (r)	104.3 (r)	108.4 (r)	107.7 (r)	106.5 (r)	103.3 (r)	106.5
	QTR 2	104.7 (r)	107.1 (r)	103.9 (r)	109.6 (r)	114.4 (r)	106.5 (r)	103.3 (r)	106.7 (r)
	QTR 3	105.0 (r)	107.7 (r)	102.3	110.5 (r)	113.8 (r)	106.7 (r)	103.9 (r)	107.2 (r)
	QTR 4	106.1	108.9 (r)	102.6 (r)	111.5 (r)	114.3 (r)	106.5 (r)	103.1 (r)	109.6 (r)
2016	QTR 1	107.3 (r)	109.7 (r)	102.7	113.7 (r)	114.3 (r)	105.1 (r)	109.1 (r)	110.3 (r)
	QTR 2	107.6 (r)	110.6 (r)	105.1 (r)	114.5 (r)	113.6 (r)	105.3 (r)	107.2 (r)	111.9 (r)
	QTR 3	109.1	111.9	103.4	115.6	115.1	105.5	112.5	113.7

(1) See the footnotes to Table B1. The full series (back to 1998 Q1) is available at the following link:

www.statswales.gov.wales/Catalogue/Business-Economy-and-Labour-Market/Economic-Indices/Index-of-Market-Services

(r) Data revised since last publication

Table B2b: Index of Market Services and Sections *continued*⁽¹⁾

SEASONALLY ADJUSTED ⁽¹⁾: 2013 = 100

2007 SIC		Information & Communication Activities		Financial & Insurance Activities		Real Estate Activities		Professional, Scientific & Technical Activities	
		Wales	UK	Wales	UK	Wales	UK	Wales	UK
SECTION		J		K		L		M	
Weights		59	104	88	127	242	204	88	121
Annual Averages									
1999		43.1	51.8	44.5	72.8	90.3 (r)	73.6	56.7	54.1
2000		52.9	62.3	46.6	76.2	87.1 (r)	76.6	60.3	56.8
2001		58.8	67.8	48.4	79.1	85.0 (r)	78.1	61.2 (r)	61.2
2002		62.7	69.4	61.0	82.7	83.9 (r)	79.9	59.7	60.7
2003		75.0	74.2	68.7	88.3	92.3 (r)	84.0	71.4	66.0
2004		70.3	76.5	71.4	92.6	105.5 (r)	85.5	78.4	68.6
2005		82.4	81.2	77.2	99.0	109.0 (r)	88.6	80.6	76.0
2006		85.3	83.4	81.2	106.7	111.2 (r)	89.9	84.5	81.6
2007		83.1	88.6	85.9	111.5	111.2 (r)	90.8	88.5	89.2
2008		84.1	90.0	99.3	113.5	112.3 (r)	91.2	85.4	90.0
2009		92.1	86.7	101.5	113.0	97.1 (r)	92.2	81.3	83.0
2010		91.9	92.3	97.0	104.3	95.6 (r)	94.8	80.9	85.4
2011		93.9	94.3	94.8	102.8	98.0 (r)	95.7	96.2	90.2
2012		98.0	98.0	105.8	103.4	103.5 (r)	98.1	93.7	94.1
2013		100.0	100.0	100.0	100.0	100.0	100.0	100.0	100.0
2014		104.0	101.1	99.3	98.2	100.6 (r)	103.6	93.9 (r)	106.8
2015		104.0 (r)	106.9 (r)	99.9 (r)	99.9 (r)	105.3 (r)	105.2	101.2 (r)	111.7 (r)
1999	QTR 1	40.5	48.4	43.7	72.2	90.7 (r)	72.3	56.0	53.0
	QTR 2	41.9	49.8	44.9	72.2	90.9 (r)	72.3	55.6 (r)	52.9
	QTR 3	43.5	53.7	44.3	72.1	90.2 (r)	74.4	56.5 (r)	54.1
	QTR 4	46.4	55.4	45.2	74.7	89.6 (r)	75.5	58.7 (r)	56.5
2011	QTR 1	97.0	93.1	92.1	102.9	96.8 (r)	95.7	91.7 (r)	88.4
	QTR 2	90.3	93.4	96.8	102.3	96.6 (r)	95.7	94.1 (r)	89.5
	QTR 3	98.8	95.5	95.5	103.2	98.1 (r)	95.4	101.0 (r)	90.9
	QTR 4	89.5	95.3	94.6	102.9	100.6 (r)	96.1	98.2 (r)	91.9
2012	QTR 1	97.1	98.2	104.6	102.1	102.2 (r)	96.5	99.1 (r)	93.6
	QTR 2	96.5	97.2	106.3	104.0	103.8 (r)	97.9	93.0 (r)	92.4
	QTR 3	98.4 (r)	98.0	106.8	104.5	104.1 (r)	99.0	91.0 (r)	94.5
	QTR 4	100.2 (r)	98.6	105.5	102.9	103.9 (r)	99.2	91.9 (r)	96.0
2013	QTR 1	99.9	100.7	105.8	102.6	102.0 (r)	99.2	100.8 (r)	97.9
	QTR 2	97.4 (r)	100.2	99.2	100.0	99.9	99.6	100.5 (r)	99.3
	QTR 3	99.3	99.5	99.0	98.6	99.4 (r)	100.2	100.2 (r)	101.5
	QTR 4	103.4 (r)	99.6	96.0	98.8	98.7 (r)	101.0	98.6 (r)	101.3
2014	QTR 1	102.9 (r)	99.0	96.2	97.3	99.1 (r)	102.4	88.5 (r)	103.6
	QTR 2	104.1 (r)	100.7	99.5	97.0	99.8 (r)	103.4	94.4 (r)	105.8
	QTR 3	105.5	101.8	99.1	97.7	100.9 (r)	104.2	93.3 (r)	107.6
	QTR 4	103.7 (r)	103.0	102.4	100.6	102.7 (r)	104.3	99.6 (r)	110.2
2015	QTR 1	107.5 (r)	104.8 (r)	103.2 (r)	101.1 (r)	103.6 (r)	104.6 (r)	99.7 (r)	109.7 (r)
	QTR 2	102.2 (r)	106.4 (r)	97.6 (r)	99.2 (r)	105.0 (r)	105.1	95.3 (r)	111.2 (r)
	QTR 3	104.2 (r)	107.1	96.9 (r)	98.4 (r)	106.2 (r)	105.6 (r)	104.0 (r)	111.9 (r)
	QTR 4	102.3 (r)	109.5	101.8 (r)	101.0 (r)	106.3 (r)	105.6 (r)	105.7 (r)	113.9 (r)
2016	QTR 1	106.1 (r)	110.3 (r)	106.6 (r)	102.3 (r)	107.2	106.1 (r)	104.7 (r)	113.8 (r)
	QTR 2	106.9 (r)	111.0 (r)	109.8 (r)	102.1 (r)	106.0 (r)	106.1 (r)	105.8 (r)	117.2 (r)
	QTR 3	111.9	115.7	110.6	103.4	106.2	106.3	108.1	118.2

(1) See the footnotes to Table B1. The full series (back to 1998 Q1) is available at the following link:

www.statswales.gov.wales/Catalogue/Business-Economy-and-Labour-Market/Economic-Indices/Index-of-Market-Services

(r) Data revised since last publication

Table B2c: Index of Market Services and Sections *continued*⁽¹⁾

SEASONALLY ADJUSTED⁽¹⁾: 2013 = 100

2007 SIC		Administrative & Support Service Activities		Other Services	
		Wales	UK		
SECTION		N		Wales	UK
				RST	
Weights		71	77	82	66
Annual Averages					
1999		53.3	56.9	96.3	87.9
2000		56.1	61.4	101.5 (r)	91.6
2001		57.0	65.3	115.8	92.3
2002		66.1	63.7	100.7	94.5
2003		61.9 (r)	65.5	95.4	95.8
2004		68.5 (r)	67.3	86.2	95.0
2005		78.1	72.1	98.7 (r)	99.2
2006		85.2	75.9	100.0 (r)	102.3
2007		75.6	83.9	91.9 (r)	98.5
2008		75.7	84.2	93.2 (r)	100.6
2009		80.4	73.4	80.4	97.0
2010		86.9 (r)	82.0	79.1	96.3
2011		95.5 (r)	87.9	91.1 (r)	100.0
2012		98.4	95.1	101.5	100.8
2013		100.0	100.0	100.0	100.0
2014		112.8 (r)	109.7	101.7 (r)	106.3
2015		118.3 (r)	115.2	104.0 (r)	108.1 (r)
1999	QTR 1	46.8	55.0	95.4	87.4
	QTR 2	50.6 (r)	56.1	95.5 (r)	89.4
	QTR 3	58.0	56.7	98.8	88.6
	QTR 4	58.0 (r)	60.0	95.5	86.2
2011	QTR 1	94.0 (r)	86.4	89.1	100.9
	QTR 2	99.9	87.5	86.3 (r)	99.8
	QTR 3	94.0 (r)	88.4	94.5	99.8
	QTR 4	94.0 (r)	89.1	94.4	99.3
2012	QTR 1	98.7	92.8	96.9	99.8
	QTR 2	98.2 (r)	93.3	99.5	100.0
	QTR 3	97.0 (r)	96.3	103.0 (r)	104.6
	QTR 4	99.6	98.1	106.8	99.0
2013	QTR 1	92.9	96.0	101.3	99.9
	QTR 2	97.3 (r)	98.7	106.0 (r)	99.2
	QTR 3	103.9 (r)	101.1	97.3	99.5
	QTR 4	105.9	104.2	95.3 (r)	101.4
2014	QTR 1	107.5	105.7	92.7 (r)	104.6
	QTR 2	111.7	109.1	99.7	106.6
	QTR 3	116.2 (r)	111.3	109.2	106.9
	QTR 4	116.0 (r)	112.6	105.3 (r)	107.0
2015	QTR 1	117.3 (r)	113.5 (r)	101.1 (r)	106.8
	QTR 2	117.1 (r)	114.1 (r)	107.4 (r)	107.3 (r)
	QTR 3	116.8 (r)	117.0 (r)	102.5 (r)	107.7 (r)
	QTR 4	121.9 (r)	116.3 (r)	104.8 (r)	110.6 (r)
2016	QTR 1	124.8 (r)	117.1 (r)	101.9 (r)	111.6 (r)
	QTR 2	122.5 (r)	117.9 (r)	100.9 (r)	112.9 (r)
	QTR 3	128.3	119.5	105.7	114.4

(1) See the footnotes to Table B1. The full series (back to 1998 Q1) is available at the following link:

www.statswales.gov.wales/Catalogue/Business-Economy-and-Labour-Market/Economic-Indices/Index-of-Market-Services

(r) Data revised since last publication

Table B3a: Index of Market Services, sub-sections ⁽¹⁾

SEASONALLY ADJUSTED ⁽¹⁾: 2013 = 100

2007 SIC		Wholesale, Retail Sale & Repair of Motor Vehicles		Wholesale Trade except Motor Vehicles		Retail sales except Motor Vehicles		Land, Water & Air Transport	
		Wales	UK	Wales	UK	Wales	UK	Wales	UK
SUB-SECTION		45		46		47		49-51	
Weights		181	169	252	308	567	523	420	608
Annual Averages									
1999		90.9	77.3	71.3	99.7	73.0	73.3	114.8	94.8
2000		80.7	76.7	69.6	91.4	75.8	76.2	110.9	97.7
2001		89.7	79.7	73.3	93.2	83.1	80.6	121.2	94.0
2002		94.3	87.1	81.1	95.9	88.5	85.6	122.0	95.4
2003		107.2	92.8	81.1	96.4	97.4	87.9	125.3	96.1
2004		94.7	95.2	87.0	97.9	101.0	92.4	128.9	98.8
2005		97.5	95.7	88.7	93.7	102.8	93.0	117.6	101.6
2006		105.8	94.8	91.6	98.9	100.7	95.8	119.1	103.5
2007		116.9	97.6	93.4	105.7	104.3	98.6	130.6	107.2
2008		102.3	90.0	82.2	99.4	108.6	98.9	121.2	108.8
2009		94.0	81.5	86.5	87.1	106.9	99.1	108.5	98.2
2010		91.0	85.8	86.3	89.1	98.4	98.3	101.5	97.5
2011		87.6	84.0	95.5	93.8	98.9	98.2	101.7	99.1
2012		93.6	89.8	99.8	92.5	100.6	98.7	99.8	99.2
2013		100.0	100.0	100.0	100.0	100.0	100.0	100.0	100.0
2014		108.3	109.2	106.4	105.4	99.8	103.9	96.4	105.9
2015		106.9 (r)	118.3 (r)	101.4	107.9 (r)	102.9	108.6 (r)	95.9 (r)	107.3 (r)
1999	QTR 1	91.6	77.9	72.7	105.9	71.2	72.2	107.4	93.9
	QTR 2	98.4	79.6	73.4	98.3	72.7	72.9	116.3	93.3
	QTR 3	87.5	74.4	73.9	97.7	73.9	73.5	117.4	95.7
	QTR 4	85.9	77.1	65.2	97.0	74.3	74.3	118.2	96.2
2011	QTR 1	76.8	83.8	93.6	94.2	98.7	98.1	100.6 (r)	97.8
	QTR 2	83.7 (r)	84.9	101.0	93.6	99.4	98.2	103.5 (r)	100.6
	QTR 3	91.0 (r)	84.1	96.1	94.5	98.9	97.8	101.6	99.2
	QTR 4	98.7 (r)	83.2	91.3	92.8	98.5 (r)	98.6	101.0 (r)	98.7
2012	QTR 1	96.8 (r)	86.5	99.2	90.9	101.4	98.9	101.5 (r)	98.4
	QTR 2	91.7	88.0	101.8	91.0	98.8	98.4	98.8	98.4
	QTR 3	91.3 (r)	93.3	94.1 (r)	93.0	100.9	99.3	98.2	99.6
	QTR 4	94.8	91.6	104.0 (r)	95.1	101.2	98.4	100.7	100.3
2013	QTR 1	98.0 (r)	96.5	105.1	98.0	98.3	98.5	95.4 (r)	100.6
	QTR 2	96.3 (r)	97.7	98.3	101.0	98.8 (r)	99.3	98.4 (r)	99.9
	QTR 3	104.4 (r)	100.6	97.7	100.9	102.2 (r)	101.1	101.2 (r)	100.0
	QTR 4	101.3 (r)	105.1	99.0 (r)	100.2	100.6 (r)	101.1	105.0 (r)	99.5
2014	QTR 1	102.6 (r)	106.5	101.1	103.3	100.8	101.6	98.2	102.5
	QTR 2	105.5 (r)	108.1	107.6	104.5	99.5 (r)	103.6	93.9 (r)	105.1
	QTR 3	110.5 (r)	110.0	107.2	106.6	98.3 (r)	103.9	98.5 (r)	107.4
	QTR 4	114.7	112.2	109.6	107.3	100.4	106.3	94.9 (r)	108.4
2015	QTR 1	111.9 (r)	113.8 (r)	103.2	107.6	102.4	107.1	92.9 (r)	107.3 (r)
	QTR 2	107.9 (r)	117.5 (r)	102.1 (r)	107.7 (r)	103.3 (r)	108.1 (r)	97.7 (r)	107.0 (r)
	QTR 3	104.2 (r)	119.3 (r)	99.7 (r)	108.1 (r)	102.8 (r)	109.0 (r)	93.6 (r)	107.4 (r)
	QTR 4	103.6 (r)	122.8 (r)	100.5 (r)	108.0 (r)	103.3	110.0 (r)	99.5 (r)	107.7 (r)
2016	QTR 1	106.0 (r)	129.7 (r)	102.4	108.3 (r)	101.8	111.7 (r)	101.0 (r)	107.1 (r)
	QTR 2	114.0 (r)	130.7 (r)	100.0 (r)	108.5 (r)	104.5 (r)	112.9 (r)	108.2 (r)	107.6 (r)
	QTR 3	109.1	130.3	93.0	108.6	106.2	115.1	106.8	108.3

(1) See the footnotes to Table B1. The full series (back to 1998 Q1) is available at the following link:

www.statswales.gov.wales/Catalogue/Business-Economy-and-Labour-Market/Economic-Indices/Index-of-Market-Services

(r) Data revised since last publication

Table B3b: Index of Market Services, sub-sections continued ⁽¹⁾

SEASONALLY ADJUSTED ⁽¹⁾ : 2013 = 100									
2007 SIC		Warehousing & Transport Support Activities; Postal & Courier Activities				Food & Beverage Service Activities		Publishing, Audio Visual & Broadcasting Activities	
		Wales	UK	Wales	UK	Wales	UK	Wales	UK
SUB-SECTION		52-53		55		56		JA	
Weights		580	392	367	264	633	736	144	260
Annual Averages									
1999		83.9	81.7	90.8	72.1	99.4	82.9	110.5	77.9
2000		82.5	90.7	79.7	73.4	105.5	84.5	131.5	86.5
2001		74.2	94.6	76.2	74.3	115.9	88.7	161.6	91.3
2002		88.3	95.7	84.6	77.2	95.2	91.7	161.6	91.9
2003		81.4	103.6	83.2	80.4	92.6	94.7	163.7	92.9
2004		84.7	108.7	94.1	81.1	112.5	95.7	162.1	90.5
2005		106.8	114.9	94.1	83.7	104.8	99.2	144.6	89.6
2006		101.9	113.5	97.3	87.1	106.6	104.0	130.0	91.0
2007		114.4	113.5	91.5	89.9	110.8	106.5	138.0	93.9
2008		127.5	104.5	107.6	89.2	112.6	103.9	133.3	92.5
2009		110.9	91.4	101.8	85.1	90.0	97.8	115.5	86.0
2010		96.0	95.4	100.6	90.2	96.5	99.1	102.1	88.0
2011		99.7	99.1	102.2	96.8	88.5	99.6	105.3	91.5
2012		96.6	97.8	103.2	96.9	102.4	104.8	111.9	95.3
2013		100.0	100.0	100.0	100.0	100.0	100.0	100.0	100.0
2014		121.5	105.2	95.5	102.8	101.5 ^(r)	103.2	110.6	96.4
2015		125.4	105.3 ^(r)	99.2	113.3 ^(r)	105.8 ^(r)	105.4 ^(r)	105.0	105.0 ^(r)
1999	QTR 1	74.1	77.1	82.2	69.8	98.7	80.6	106.6	75.3
	QTR 2	88.0	81.6	89.5	71.7	102.4	82.2	107.9	73.1
	QTR 3	87.0	83.6	97.5	73.4	100.5	83.2	110.2	80.7
	QTR 4	86.3	84.5	94.2	73.4	96.0	85.8	117.1	82.5
2011	QTR 1	99.8	100.6	97.1	93.2	86.1	98.4	124.0	90.5
	QTR 2	94.4	98.6	98.9	96.9	89.3	99.4	97.0 ^(r)	91.6
	QTR 3	104.9	97.9	106.9 ^(r)	98.0	88.6 ^(r)	100.1	107.4	92.8
	QTR 4	99.6	99.1	106.1	99.0	90.1	100.4	92.7 ^(r)	91.3
2012	QTR 1	101.1	95.5	109.6 ^(r)	95.4	97.7	103.3	113.5 ^(r)	93.6
	QTR 2	96.2	98.3	104.9	95.8	101.3	104.6	105.7 ^(r)	95.6
	QTR 3	93.7 ^(r)	98.1	100.9 ^(r)	99.1	104.4	106.9	104.9	94.4
	QTR 4	95.5	99.3	97.4	97.2	106.0	104.3	123.7 ^(r)	97.7
2013	QTR 1	95.5	101.1	103.4 ^(r)	97.9	96.4	100.7	96.7 ^(r)	100.5
	QTR 2	98.6 ^(r)	99.7	104.7 ^(r)	102.2	95.7 ^(r)	99.6	107.4 ^(r)	98.4
	QTR 3	102.4	98.8	94.4 ^(r)	101.1	106.6	99.7	92.1 ^(r)	100.1
	QTR 4	103.4	100.5	97.4 ^(r)	98.8	101.4 ^(r)	99.9	103.9 ^(r)	101.0
2014	QTR 1	122.5	102.7	94.0 ^(r)	99.6	96.8	101.6	92.2 ^(r)	95.7
	QTR 2	116.5	103.6	95.2	102.6	100.1 ^(r)	102.8	111.1 ^(r)	95.1
	QTR 3	124.3	106.3	96.4	102.8	101.3 ^(r)	104.0	121.1 ^(r)	96.4
	QTR 4	122.5	108.3	96.2 ^(r)	106.4	108.0 ^(r)	104.5	118.1 ^(r)	98.2
2015	QTR 1	119.1	105.3	93.9 ^(r)	111.0 ^(r)	108.7 ^(r)	104.9 ^(r)	121.4 ^(r)	102.3
	QTR 2	127.4	105.6 ^(r)	96.1 ^(r)	111.5 ^(r)	107.4 ^(r)	105.0 ^(r)	104.5 ^(r)	104.5 ^(r)
	QTR 3	129.3	105.8 ^(r)	102.3	113.6 ^(r)	104.9 ^(r)	104.9 ^(r)	97.8 ^(r)	104.3 ^(r)
	QTR 4	125.8	104.6 ^(r)	104.6 ^(r)	117.1 ^(r)	102.1 ^(r)	107.0 ^(r)	96.5 ^(r)	109.0 ^(r)
2016	QTR 1	124.9	102.0 ^(r)	108.1 ^(r)	117.7 ^(r)	109.7 ^(r)	107.6 ^(r)	111.5 ^(r)	110.1
	QTR 2	118.4 ^(r)	101.6 ^(r)	101.9 ^(r)	118.7 ^(r)	110.2 ^(r)	109.5 ^(r)	111.3 ^(r)	110.2 ^(r)
	QTR 3	122.0	101.1	106.0	119.5	116.2	111.7	127.5	119.9

(1) See the footnotes to Table B1. The full series (back to 1998 Q1) is available at the following link:

www.statswales.gov.wales/Catalogue/Business-Economy-and-Labour-Market/Economic-Indices/Index-of-Market-Services

(r) Data revised since last publication

Table B3c: Index of Market Services, sub-sections *continued* ⁽¹⁾

SEASONALLY ADJUSTED ⁽¹⁾: 2013 = 100

2007 SIC		Telecommunications		Information Technology & Other Information Activities		Real Estate Activities excluding OOD		Owner Occupied Dwellings	
		Wales	UK	Wales	UK	Wales	UK	Wales	UK
SUB-SECTION		JB		JC		LXOOD		OOD	
Weights		467	288	389	452	130	276	870	724
Annual Averages									
1999		46.8	38.2	40.6	50.2	68.2	46.8	93.4 (r)	82.0
2000		56.0	52.6	55.8	57.2	69.0	50.9	89.8 (r)	84.5
2001		59.5	59.7	54.3	61.4	70.3	53.5	87.3 (r)	85.7
2002		62.5	63.9	60.7	61.6	75.7	56.4	85.5 (r)	87.2
2003		85.7	69.5	63.1	68.0	82.3	61.2	94.1 (r)	91.0
2004		87.2	74.5	49.1	71.0	83.3	63.8	108.7 (r)	92.1
2005		100.5	83.1	66.3	76.0	78.5	70.1	113.2 (r)	94.3
2006		99.5	84.8	79.5	79.0	79.9	75.3	115.4 (r)	94.4
2007		97.0	91.6	73.3	84.6	93.4	79.2	113.8 (r)	94.4
2008		106.9	95.3	64.0	86.2	86.9	83.3	116.0 (r)	93.9
2009		110.1	98.3	77.6	80.8	90.9	87.3	97.8 (r)	94.1
2010		111.6	103.1	77.7	89.1	97.4	89.4	95.4 (r)	96.9
2011		109.8	105.1	81.7	90.1	97.4	93.8	98.1 (r)	96.5
2012		101.4	104.7	93.5	95.8	100.2	97.3	103.9 (r)	98.5
2013		100.0	100.0	100.0	100.0	100.0	100.0	100.0	100.0
2014		100.0	95.5	106.4	107.5	96.9	105.1	101.2 (r)	103.0
2015		104.9 (r)	98.6 (r)	102.7	113.3 (r)	96.5	107.7 (r)	106.6 (r)	104.3 (r)
1999	QTR 1	42.8	33.7	38.3	48.3	66.8	45.6	93.9 (r)	80.6
	QTR 2	46.0	37.4	38.1	48.3	66.8	45.8	94.1 (r)	80.6
	QTR 3	48.8	39.8	39.3	51.7	67.1	47.4	93.3 (r)	82.7
	QTR 4	49.6	42.1	46.8	52.4	71.9	48.2	92.2 (r)	84.0
2011	QTR 1	112.2	103.8	80.6	88.8	95.1 (r)	92.1	97.1 (r)	97.2
	QTR 2	109.3 (r)	102.3	77.4	89.6	95.4 (r)	93.5	96.8 (r)	96.6
	QTR 3	109.8	106.7	90.7	91.0	97.5 (r)	94.0	98.2 (r)	96.0
	QTR 4	108.1 (r)	107.4	78.1	91.1	101.5 (r)	95.6	100.5 (r)	96.3
2012	QTR 1	103.3	105.9	90.6	96.6	100.7 (r)	96.0	102.4 (r)	96.7
	QTR 2	102.8	105.6	91.2	93.5	97.7 (r)	96.9	104.6 (r)	98.3
	QTR 3	99.7	104.6	96.4	96.3	100.7 (r)	97.8	104.5 (r)	99.4
	QTR 4	99.8	102.7	95.6	96.8	101.5 (r)	98.5	104.2 (r)	99.5
2013	QTR 1	100.7	103.3	99.9	99.3	96.6 (r)	99.5	102.7 (r)	99.1
	QTR 2	100.3 (r)	102.9	93.8	99.6	98.0 (r)	99.8	100.2 (r)	99.5
	QTR 3	98.8 (r)	98.9	101.1	99.6	101.4 (r)	99.5	99.1 (r)	100.5
	QTR 4	100.2 (r)	94.9	105.2	101.5	104.0 (r)	101.1	98.0 (r)	100.9
2014	QTR 1	103.5	95.2	106.3	103.4	100.5 (r)	104.0	98.9 (r)	101.8
	QTR 2	101.7 (r)	95.5	104.4	107.2	94.6 (r)	104.9	100.6 (r)	102.8
	QTR 3	100.7 (r)	95.6	105.4	108.9	96.6 (r)	105.8	101.6 (r)	103.6
	QTR 4	94.3 (r)	95.6	109.5	110.4	95.9 (r)	105.7	103.7 (r)	103.8
2015	QTR 1	100.3	98.0 (r)	111.1	110.5	96.5 (r)	106.0 (r)	104.6 (r)	104.0 (r)
	QTR 2	103.5 (r)	99.5 (r)	99.8	111.9 (r)	96.5 (r)	107.0 (r)	106.3 (r)	104.4 (r)
	QTR 3	105.9 (r)	99.4 (r)	104.5	113.7 (r)	95.9 (r)	108.6 (r)	107.7 (r)	104.4 (r)
	QTR 4	109.9 (r)	97.7 (r)	95.3	117.4 (r)	97.0 (r)	109.2 (r)	107.8 (r)	104.2 (r)
2016	QTR 1	101.3 (r)	95.8 (r)	109.8 (r)	119.8 (r)	98.1 (r)	110.0 (r)	108.5	104.6 (r)
	QTR 2	101.5 (r)	94.0 (r)	111.9 (r)	122.3 (r)	94.3 (r)	109.8 (r)	107.7 (r)	104.8 (r)
	QTR 3	100.1	94.8	120.2	126.5	97.1	110.1	107.5	104.9

(1) See the footnotes to Table B1. The full series (back to 1998 Q1) is available at the following link:

www.statswales.gov.wales/Catalogue/Business-Economy-and-Labour-Market/Economic-Indices/Index-of-Market-Services

(r) Data revised since last publication